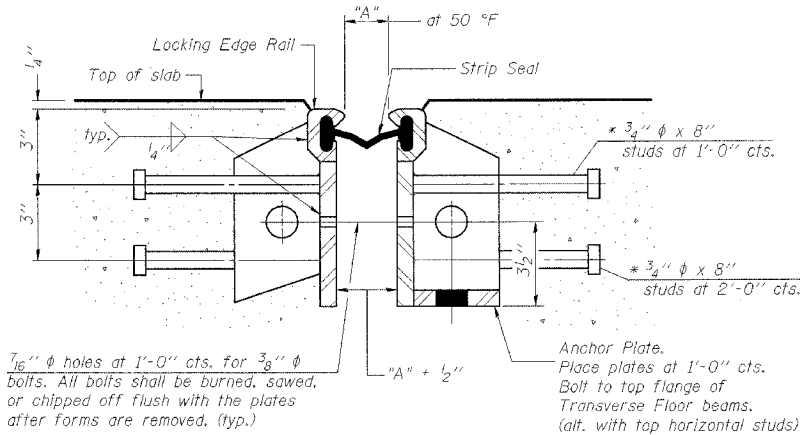


Required Strip Seal rated movement	"A"	Location
1"	1 <sup>1</sup> / <sub>8</sub> "	Pier 2
2"	1 <sup>3</sup> / <sub>4</sub> "	Pier 1



**GENERAL NOTES**

The strip seal shall be made continuous and shall have a minimum thickness of 1/4". The configuration of the strip seal shall match the configuration of the Locking Edge Rails.

The height and thickness of the Locking Edge Rails shown are minimum dimensions. The actual configuration of the Locking Edge Rails and matching strip seal may vary from manufacturer to manufacturer. Flanged edge rails will not be allowed.

Locking Edge Rails may be spliced at slope discontinuities and stage construction joints.

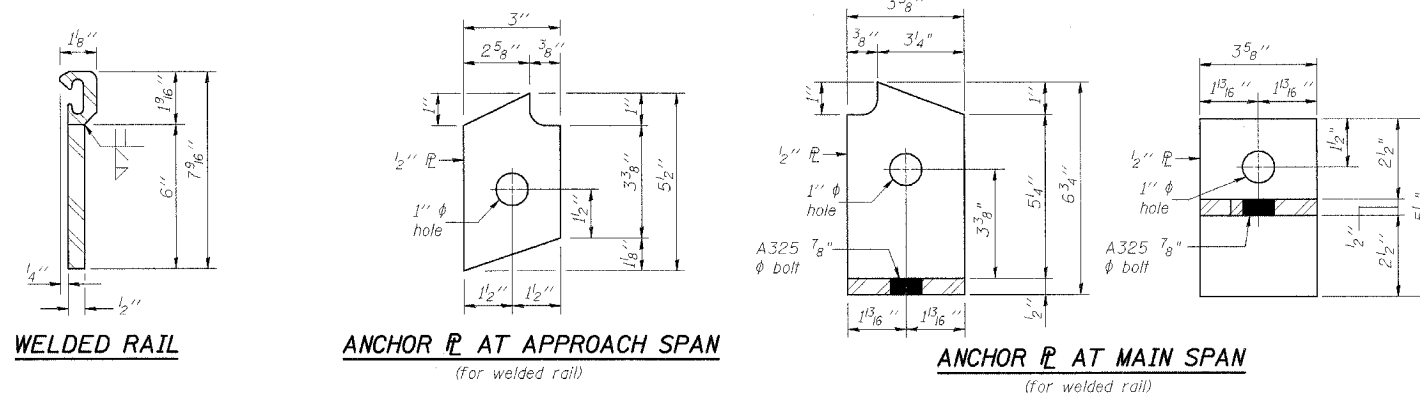
The manufacturer's recommended installation methods shall be followed.

The joint opening and deck dimensions detailed on the superstructure are based on a preformed joint seal. If the contractor elects to use the alternate strip seal joint, the opening and deck dimensions shall be modified according to the dimensions detailed on this sheet. Required modifications shall be made at no additional cost to the State.

\* Granular or solid flux filled headed studs conforming to Article 1006.32 of the Std. Specs., automatically end welded.

**SECTION THRU WELDED RAIL EXP. JOINT**

( Studs Required )  
( Anchor Plates Required )



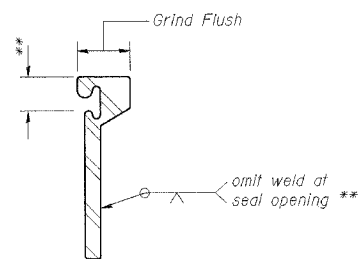
**EXPANSION JOINT SETTING TABLE - 2" JOINT**

(JOINT MANUFACTURER TO VERIFY - SEE SPECIFICATION)

Setting Temperature	"A"
40 °F	1 <sup>7</sup> / <sub>8</sub> "
50 °F	1 <sup>3</sup> / <sub>4</sub> "
60 °F	1 <sup>5</sup> / <sub>8</sub> "
70 °F	1 <sup>1</sup> / <sub>2</sub> "
80 °F	1 <sup>3</sup> / <sub>8</sub> "
90 °F	1 <sup>1</sup> / <sub>4</sub> "

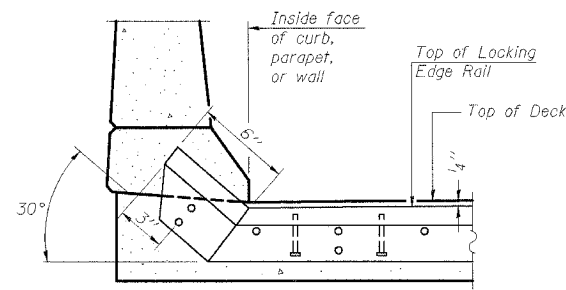
**BILL OF MATERIAL**

Item	Unit	Total
Bridge Joint System Expansion - 1"	Ft	40
Bridge Joint System Expansion - 2"	Ft	40



**LOCKING EDGE RAIL SPLICE**

The inside of the locking edge rail groove shall be free of weld residue.



**AT CURB, PARAPET, OR WALL**

**TYPICAL END TREATMENTS**

**SHT. S-14 OF 40**

REVISIONS	
NAME	DATE

CITY OF DANVILLE, ILLINOIS  
HUNGRY HOLLOW ROAD BRIDGE

**EXPANSION JOINT DETAILS**

SCALE:  
DATE 12/06/05

DRAWN BY LAR  
CHECKED BY JRH

**TENG**

TENG & ASSOCIATES, INC.  
ENGINEERS ARCHITECTS PLANNERS  
205 N. MICHIGAN AVE. CHICAGO, IL 60610  
TELEPHONE 434-8600