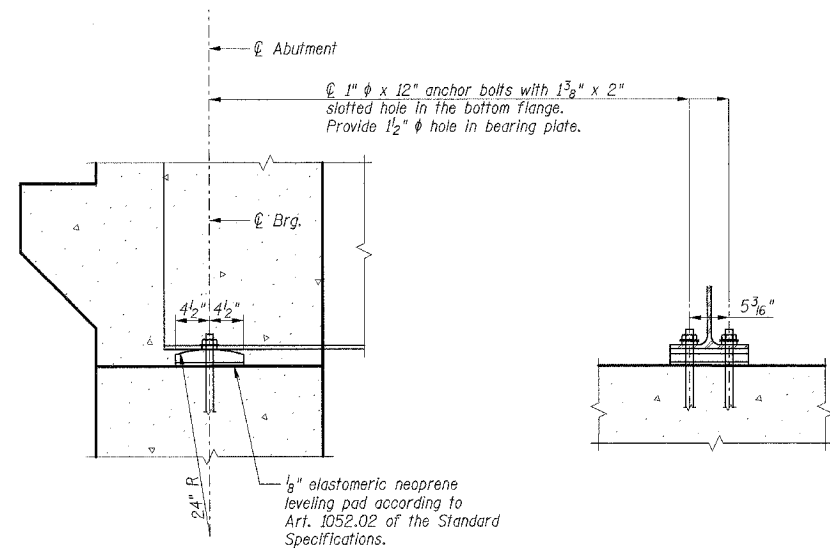
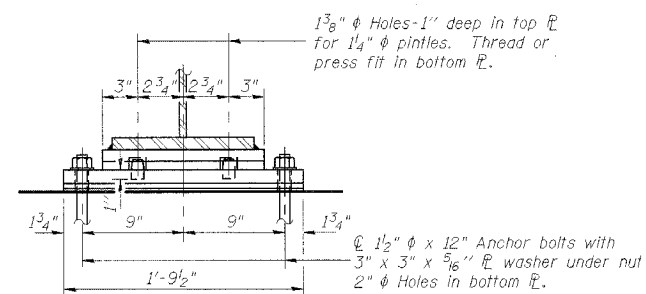
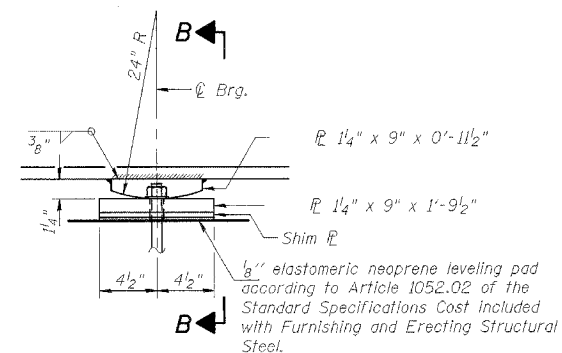
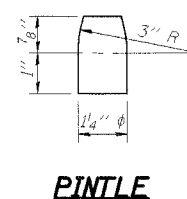


FAU RTE	SECTION	COUNTY	TOTAL SHEETS	SHEET NO.
7000	02-00212-00-BR	VERMILION	59	44
FROM STA. 96+00.00		TO STA. 103+10.10		
FED. ROAD DIST. NO.	ILLINOIS	FED. AID PROJECT		

CONTRACT NO. 91285



BEARING AT INTEGRAL ABUTMENT



FIXED BEARING

Pier 1 and Pier 2 Approach Spans - 10 Thus
Weight of steel included with total weight of structural steel.

Notes:

1. Steel plates for bearing assemblies shall conform to the requirements of AASTO M270 Grade 50.
2. Anchor bolts shall conform to ASTM F1554 Grade 105.
3. Anchor bolts at fixed bearings may be cast into the masonry.

SHT. S-29 OF 40

REVISIONS		CITY OF DANVILLE, ILLINOIS HUNGRY HOLLOW ROAD BRIDGE BEARING DETAILS APPROACH SPANS
NAME	DATE	
		SCALE: _____ DATE 12/06/05 DRAWN BY LAR CHECKED BY JRH TENG <small>TENG & ASSOCIATES, INC. ENGINEERS/ARCHITECTS/PLANNERS 200 N. MICHIGAN AVE. CHICAGO, IL 60601 TELEPHONE 312-642-9000</small>

ROCSSF

S:\DOCUMENT\02366902\STRUCT\UGAN\BRG0002C.DGN

ATT:00079.DGN
12-07-2005, 14:23:35