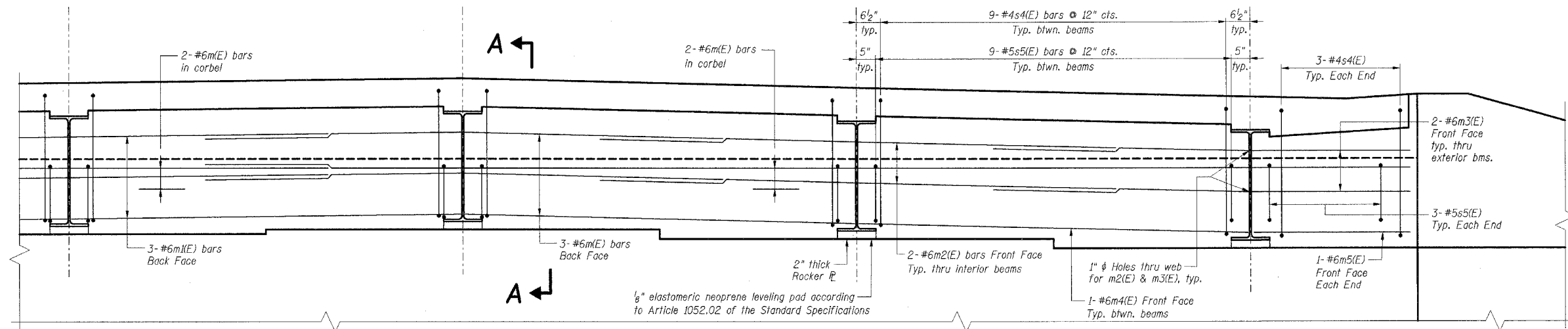


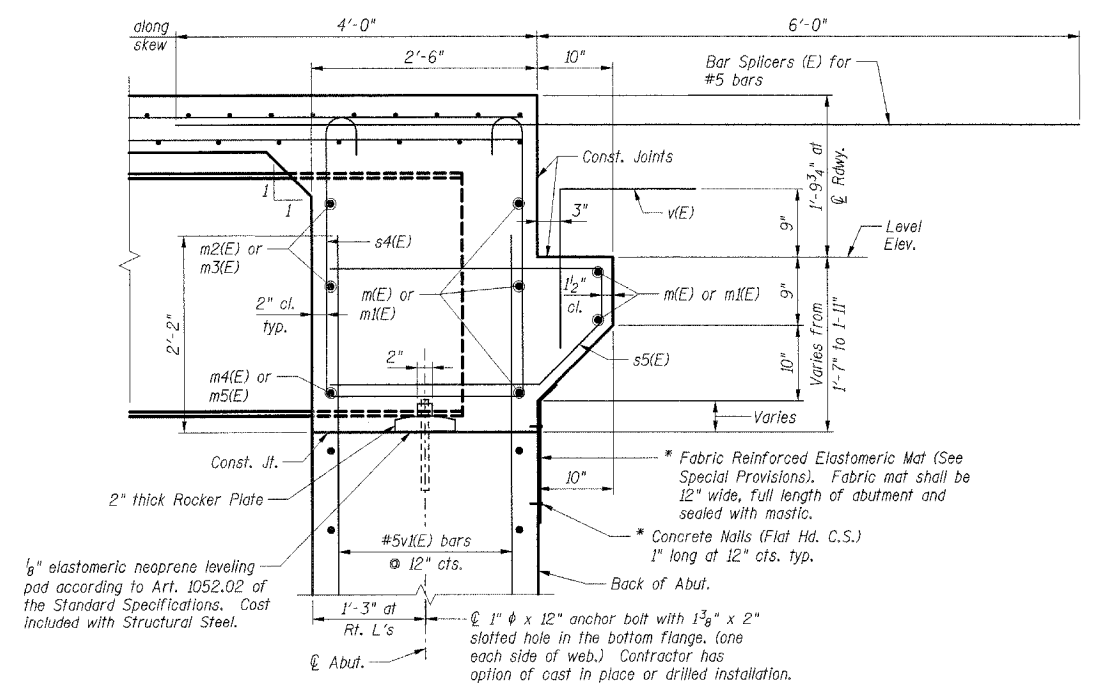
FAU RTE	SECTION	COUNTY	TOTAL SHEETS	SHEET NO.
7000	02-00212-00-BR	VERMILION	59	49
FROM STA. 96+00.00		TO STA. 103+10.10		
FED. ROAD DIST. NO.		ILLINOIS FED. AID PROJECT		
CONTRACT NO. 91285				



DIAPHRAGM ELEVATION AT ABUTMENT

- Notes:
1. Reinforcement bars in diaphragm are billed with superstructure on Sheet S-12.
 2. Concrete in diaphragm is included with Concrete Superstructure on Sheet S-12.
 3. For details of bars s4(E) & s5(E) see Sheet S-12
 4. The s4(E) and s5(E) bars shall be placed parallel to the beams. Spacing for these bars shall be at right angles to the beams.

MIN. BAR LAP
#6 bar = 2'-9"



SECTION A-A
Dimensions at right angles to abutment, except as shown.
* Cast included with Concrete Superstructure

SHT. S-34 OF 40

REVISIONS	
NAME	DATE

CITY OF DANVILLE, ILLINOIS
HUNGRY HOLLOW ROAD BRIDGE

**ABUTMENT DIAPHRAGM
ELEVATION & SECTION**

SCALE: 3/8"=1'
DATE 12/06/05

DRAWN BY LAR
CHECKED BY JRH

TENG

TENG & ASSOCIATES, INC.
ENGINEERS ARCHITECTS PLANNERS
805 N. MICHIGAN AVE. CHICAGO, IL 60611
TELEPHONE 312-646-2000

R055PF
S:\DOCUMENT\02356902\STRUCT\CON\ABT\TOP\8X.DGN
12-07-2005 13:25:31