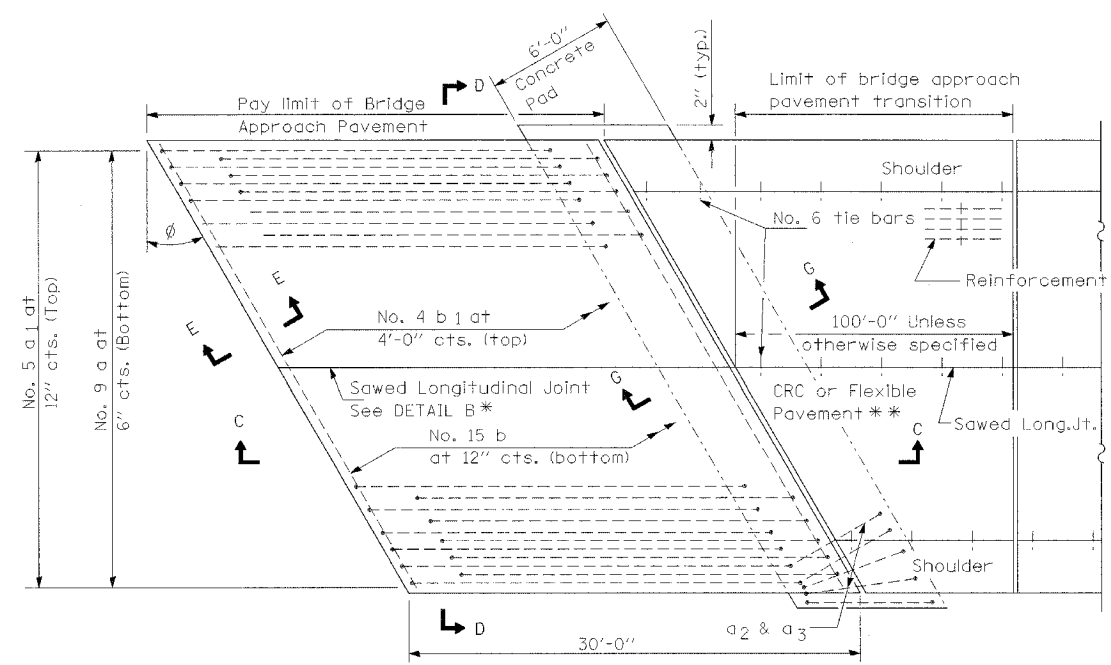
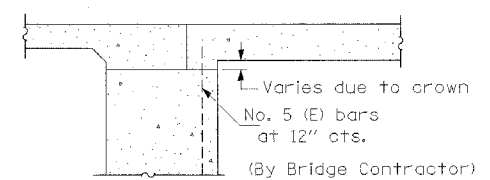


FAU RTE	SECTION	COUNTY	TOTAL SHEETS	SHEET NO.
7000	02-00212-00-BR	VERMILION	59	50
FROM STA. 96+00.00		TO STA. 103+10.10		
FED. ROAD DIST. NO.		ILLINOIS FED. AID PROJECT		CONTRACT NO. 91285

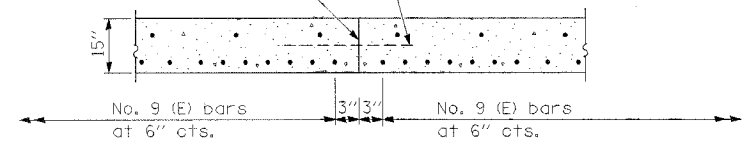


PLAN - WITH SKEW



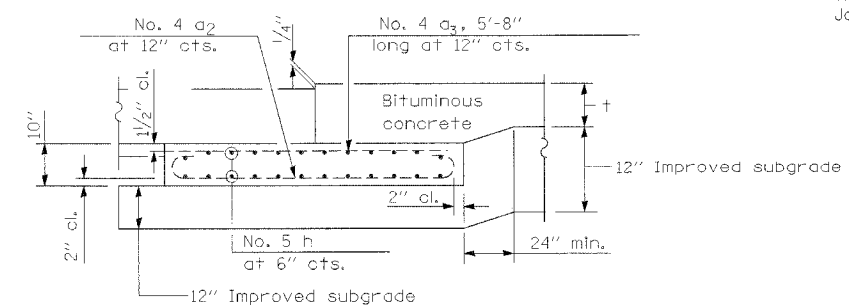
SECTION E-E
(Integral Abutments)

Longitudinal Construction Joint in accordance with details shown on Standard 420001.

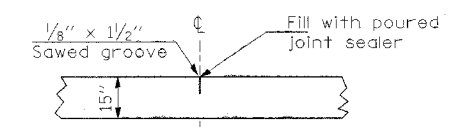


OPTIONAL LONGITUDINAL CONSTRUCTION JOINT

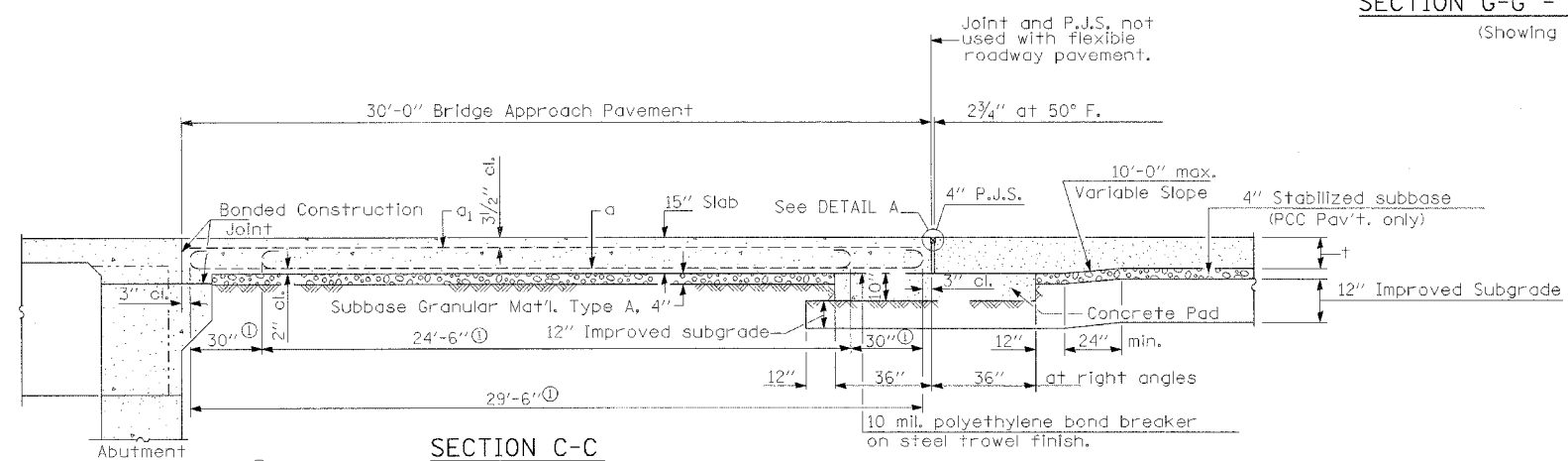
As approved by the Engineer, the Contractor may elect to reduce the widths of pour by use of the Optional Longitudinal Construction Joint shown. Joints shall be located at the edge of a traffic lane.



SECTION G-G - FLEXIBLE PAVEMENT
(Showing reinforcement)

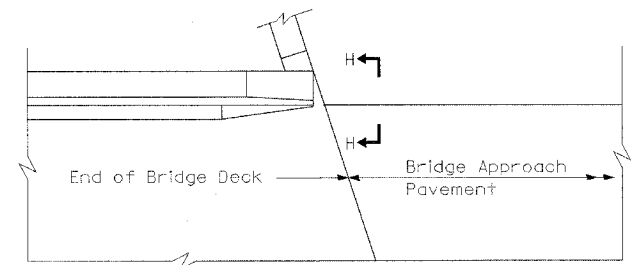


DETAIL B*

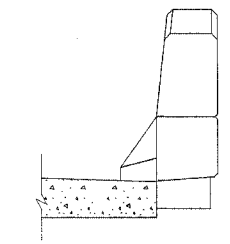


SECTION C-C

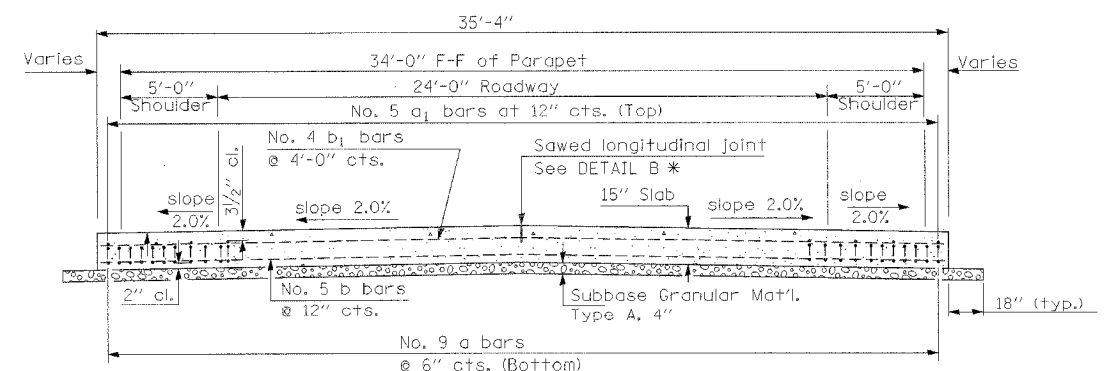
ⓐ Stagger No. 9 a bars as shown on plan - full width



PARAPET TO CURB TRANSITION INTEGRAL ABUTMENT



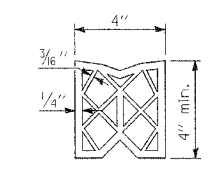
SECTION H-H



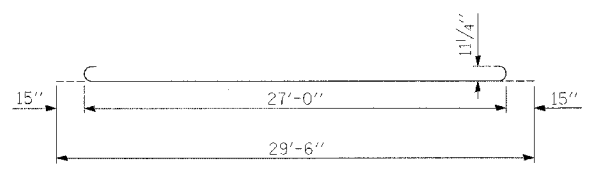
SECTION D-D

(See Plan for Dimensions not shown)
All reinforcement bars shall be epoxy coated.

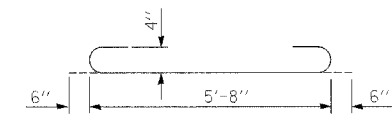
* Saw \perp or lane edge if poured two or more lane widths at a time.
* * Omit Reinforcement, tie bars and sawed Long. Jt. for Flexible Pavement.



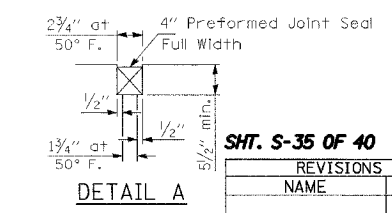
PREFORMED JOINT SEAL



BAR a



BAR a2



DETAIL A

DESIGN STRESSES

$f_y = 60,000$ p.s.i.
 $f'_c = 3,500$ p.s.i.
 $n = 8.5$

GENERAL NOTES

THICKNESS- t =Thickness of Pavement.
All dimensions are in inches unless otherwise shown.

SHT. S-35 OF 40

REVISIONS	
NAME	DATE

CITY OF DANVILLE, ILLINOIS
HUNGRY HOLLOW ROAD BRIDGE

APPROACH SLAB
PLAN & DETAILS

SCALE: 1/4"=1'
DATE 12/06/05

DRAWN BY: LAR
CHECKED BY: JRH

TENG
TENG & ASSOCIATES, INC.
ENGINEERS/ARCHITECTS/PLANNERS
202 N. MICHIGAN AVE. CHICAGO, IL 60601
TELEPHONE 312.646.1000

ROSSFF

S:\DOCUMENT\02316902\STRIP\TOD\K\AF500PBY.DGN

ATTN:02316902
12-07-2005, 15:52:30