

F.A.U. RTE.	SECTION	COUNTY	TOTAL SHEETS	SHEET NO.
807	00-00374-00-PV	CHAMPAIGN	149	1
STA.		TO STA.		
FED. ROAD DIST. NO. 7 ILLINOIS F.A. PROJECT M-5181(38)				

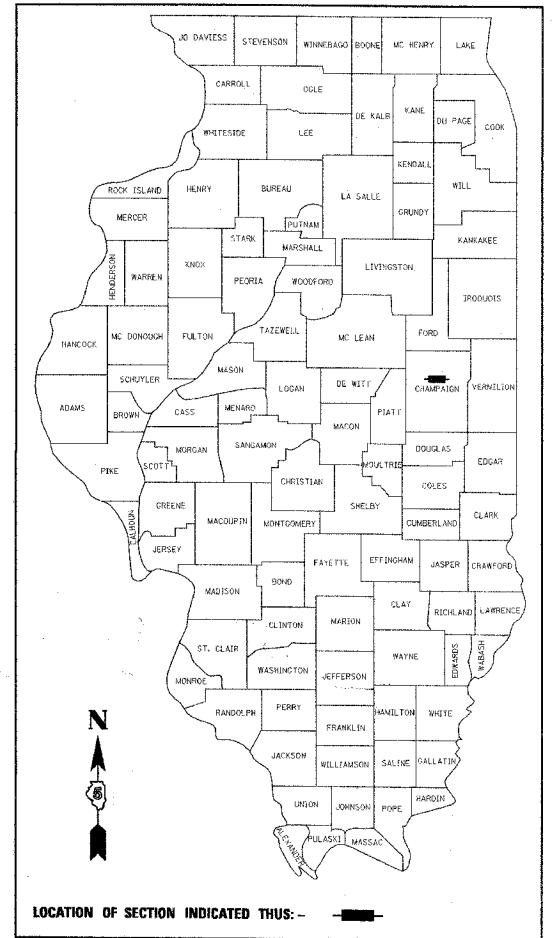
**INDEX OF SHEETS**

SHEET NO.	DESCRIPTION
1	COVER SHEET
2	GENERAL NOTES
3	HIGHWAY STANDARDS AND LEGEND
4-7	SUMMARY OF QUANTITIES
8-10	SCHEDULES OF QUANTITIES
11	EXISTING TYPICAL SECTIONS
12-16	PROPOSED TYPICAL SECTIONS
17-19	HORIZONTAL ALIGNMENT LAYOUT AND CONTROL
20	CURTIS/DUNCAN INTERSECTION S.E. & CROSS SLOPE TRANSITION TABLES
21-29	REMOVALS/RELOCATIONS PLANS
30	FIELD TILE EXPLORATION & REPLACEMENT PLAN
31-40	PLAN AND PROFILE - CURTIS ROAD
41-47	PLAN AND PROFILE - DUNCAN ROAD
48-50	PLAN AND PROFILE - OUTFALL STORM SEWER
51-53	STAGE CONSTRUCTION AND MAINTENANCE OF TRAFFIC PLANS
54-57	STORM WATER POLLUTION PREVENTION PLAN
58	SIDE ROAD PROFILES
59-67	PAVEMENT JOINT PLANS
68-70	INTERSECTION DETAILS
71-79	PAVEMENT MARKING PLANS
80-81	PAVEMENT MARKING DETAILS
82-84	TREE PLANTING PLANS
85-87	TRAFFIC SIGNAL PLANS - CURTIS RD./DUNCAN RD.
88-94	ROADWAY LIGHTING PLANS
95	RETAINING WALL DETAIL
96-98	INLET BOX, CONCRETE HEADWALL & BOX CULVERT EXTENSION DETAILS
99-101	MISCELLANEOUS DETAILS
102-120	CROSS SECTIONS - CURTIS ROAD
121-135	CROSS SECTIONS - DUNCAN ROAD
136-140	CROSS SECTIONS - SIDE STREETS
141-149	SIGNING PLANS (FOR INFORMATION ONLY)

# STATE OF ILLINOIS DEPARTMENT OF TRANSPORTATION DIVISION OF HIGHWAYS PLANS FOR PROPOSED FEDERAL AID HIGHWAY

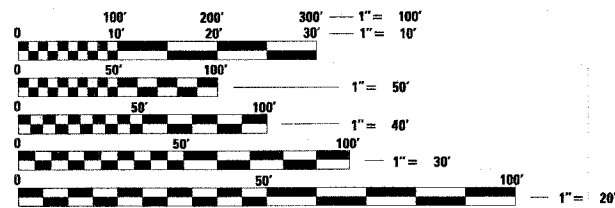
**SCALES**  
 PLAN 1 INCH = 20 FEET  
 PROFILE HORIZ. 1 INCH = 20 FEET  
 PROFILE VERT. 1 INCH = 5 FEET  
 CROSS SECTIONS HORIZ. 1 INCH = 10 FEET  
 CROSS SECTIONS VERT. 1 INCH = 5 FEET

## CITY OF CHAMPAIGN CHAMPAIGN COUNTY, ILLINOIS SECTION NO. 00-00374-00-PV PROJECT NO. M-5181(38) JOB NO. C-95-308-04 CITY PROJECT NO. 23-0000-07900-0399 CURTIS ROAD F.A.P. ROUTE 807



**ILLINOIS HIGHWAY STANDARD DRAWINGS**

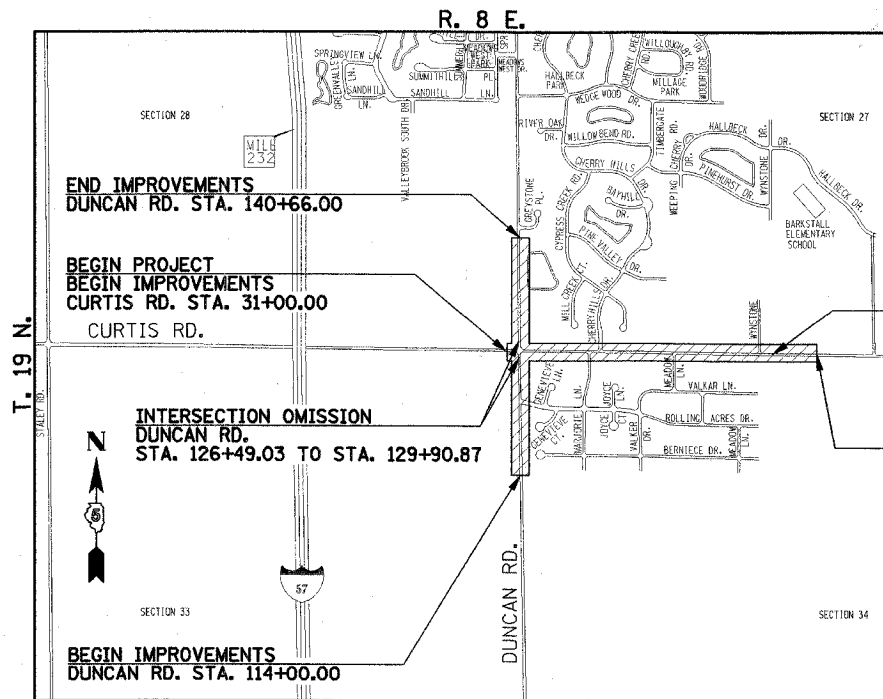
(SEE SHEET NO. 03)



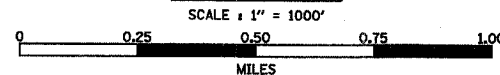
FULL SIZE PLANS HAVE BEEN PREPARED USING STANDARD ENGINEERING SCALES, REDUCED SIZED PLANS WILL NOT CONFORM TO STANDARD SCALES, IN MAKING MEASUREMENTS ON REDUCED PLANS, THE ABOVE SCALES MAY BE USED.

J.U.L.I.E.  
JOINT UTILITY LOCATION INFORMATION FOR EXCAVATION  
1-800-892-0123

**CONTRACT NO. 91308**



**LOCATION MAP**



TOTAL LENGTH OF PROJECT = 3000.00 FEET = 0.568 MILES  
 TOTAL LENGTH OF IMPROVEMENT = 6166.00 FEET = 1.168 MILES  
 NET LENGTH OF IMPROVEMENT = 5824.16 FEET = 1.103 MILES

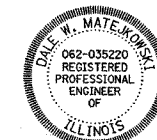
END PROJECT  
CURTIS RD. STA. 61+00.00

END IMPROVEMENTS  
CURTIS RD. STA. 66+00.00

**DESIGN DESIGNATION**

CURTIS ROAD  
1670(26) ARTERIAL 2.06(PCC-20)  
DUNCAN ROAD  
920(26) COLLECTOR 1.02(PCC-20)

*Clark Dietz*  
PROFESSIONAL ENGINEER  
CLARK DIETZ, INC.  
DATE: 10-4-05  
LICENSE EXPIRES 11-30-05



APPROVED	<i>October 4</i> <i>Jeff Blue</i> COUNTY ENGINEER	20 05
APPROVED	<i>October 4</i> <i>Alan Wegman</i> CITY ENGINEER	20 05
PASSED	<i>10/14</i> <i>Dale S.</i> DISTRICT FIVE ENGINEER OF LOCAL ROADS & STREETS	20 05
Releasing For Bid Based on Limited Review	<i>10-14</i> <i>Joseph E. Conway</i> DEPUTY DIRECTOR OF HIGHWAYS, REGION THREE ENGINEER	20 05

STATE OF ILLINOIS  
DEPARTMENT OF TRANSPORTATION

**Clark Dietz**  
ENGINEERS  
DESIGN FIRM REGISTRATION NO. 184-000450  
1817 SOUTH NEIL STREET  
SUITE 100  
CHAMPAIGN, ILLINOIS 61820  
T: 217.373.8900  
F: 217.373.8923