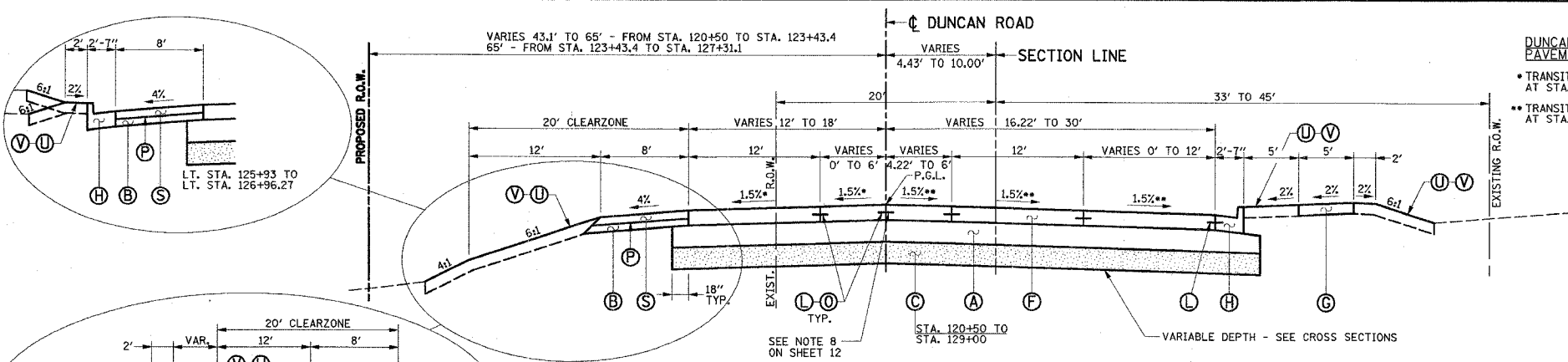


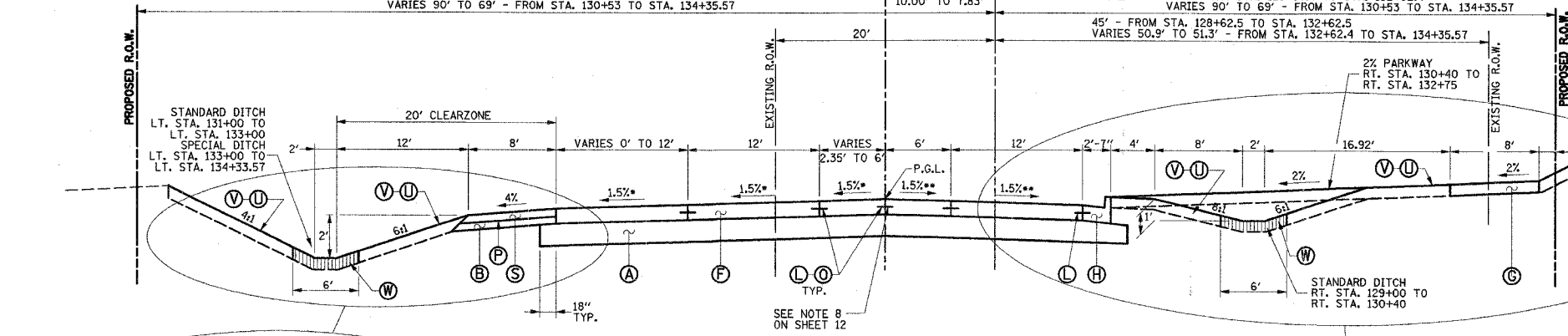
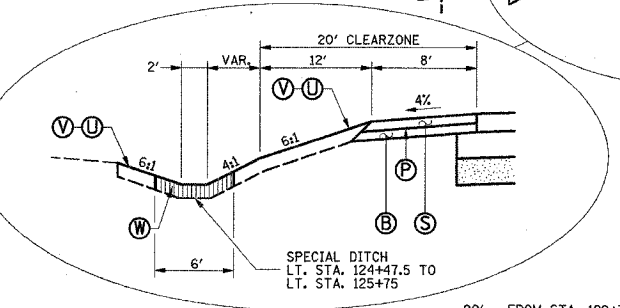
F.A.U. NO.	SECTION	COUNTY	TOTAL SHEETS	SHEET NO.
807	00-00374-00-PV	CHAMPAIGN	149	14
STA.	TO STA.			
FED. ROAD DIST. NO. 7		ILLINOIS	F.A. PROJECT M-5181(38)	CONTRACT NO. 91308



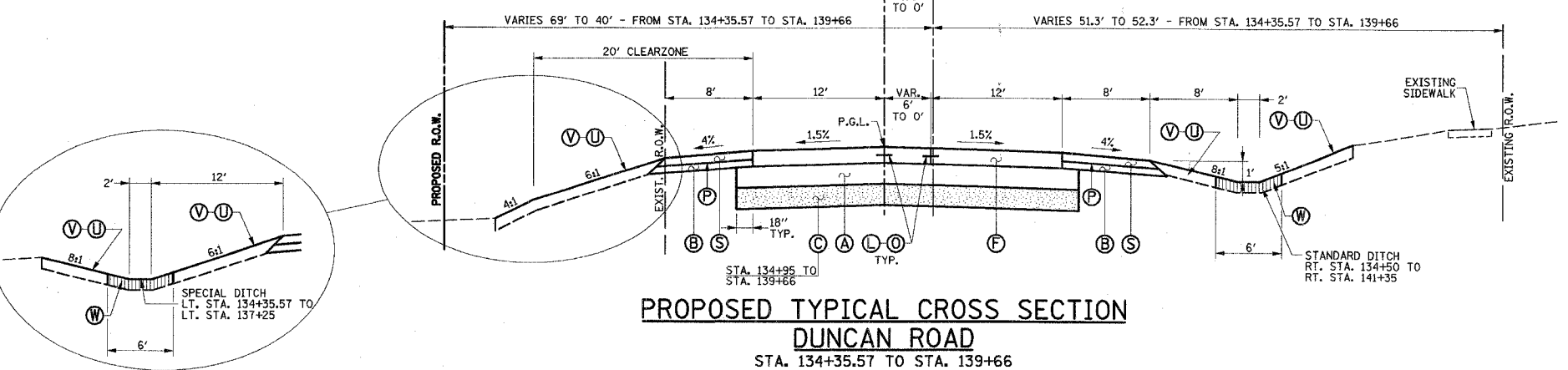
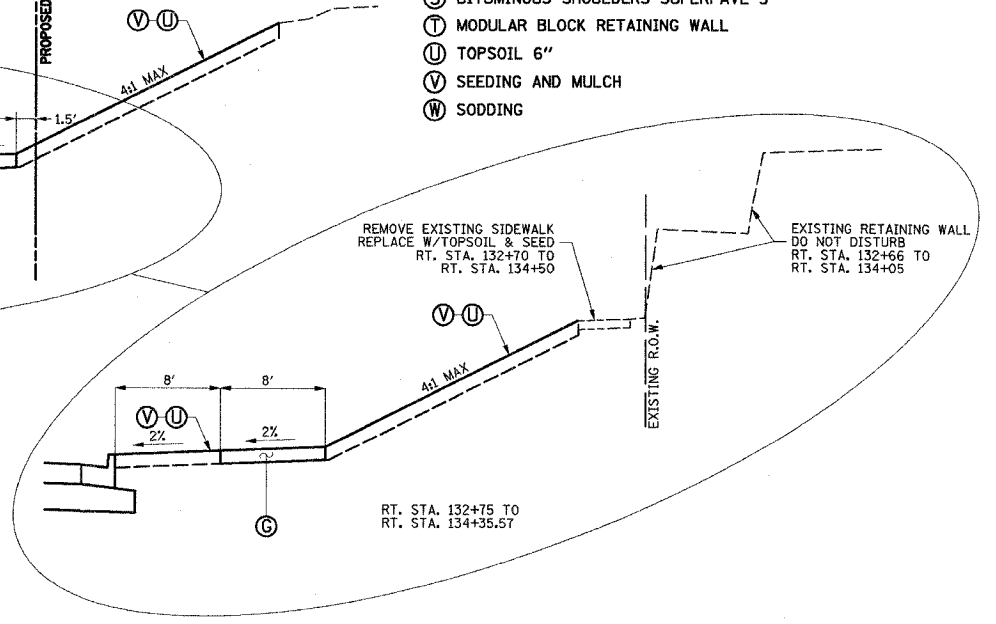
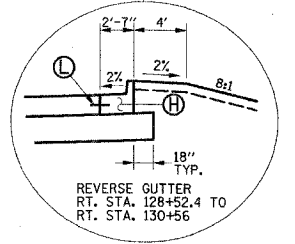
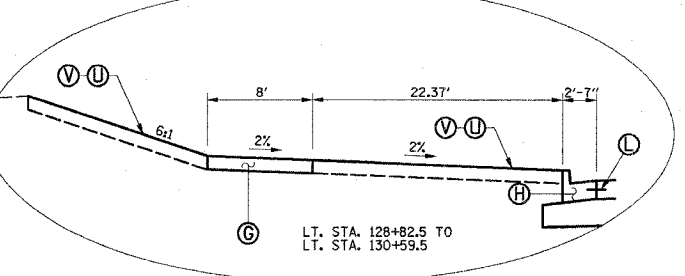
**PROPOSED TYPICAL CROSS SECTION  
DUNCAN ROAD  
STA. 120+50 TO STA. 127+90.19**

**DUNCAN ROAD  
PAVEMENT CROSS SLOPE**  
 \* TRANSITION PAVEMENT SLOPE FROM -1.50% AT STA. 127+32 TO -1.26% AT STA. 127+42  
 \*\* TRANSITION PAVEMENT SLOPE FROM -1.50% AT STA. 125+77 TO +1.26% AT STA. 127+42

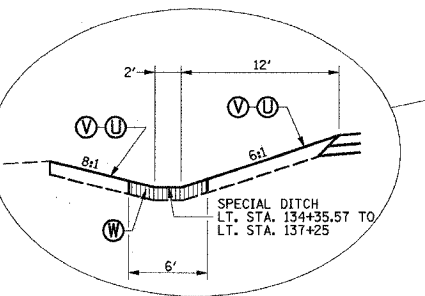
**DUNCAN ROAD  
PAVEMENT CROSS SLOPE**  
 \* TRANSITION PAVEMENT SLOPE FROM -1.26% AT STA. 128+98 TO -1.50% AT STA. 129+13  
 \*\* TRANSITION PAVEMENT SLOPE FROM +1.26% AT STA. 130+00 TO -1.50% AT STA. 131+00



**PROPOSED TYPICAL CROSS SECTION  
DUNCAN ROAD  
STA. 128+50.19 TO STA. 134+35.57**



**PROPOSED TYPICAL CROSS SECTION  
DUNCAN ROAD  
STA. 134+35.57 TO STA. 139+66**



- PROPOSED TYPICAL SECTION KEY**
- (A) SUB-BASE GRANULAR MATERIAL, TYPE A 12"
  - (B) SUB-BASE GRANULAR MATERIAL, TYPE B 4"
  - (C) AGGREGATE SUBGRADE, SPECIAL (SEE NOTE 6)
  - (D) AGGREGATE BASE COURSE, TYPE A 8"
  - (E) AGGREGATE SHOULDERS, TYPE B 4"
  - (F) PORTLAND CEMENT CONCRETE PAVEMENT 9" (JOINTED)
  - (G) PORTLAND CEMENT CONCRETE SIDEWALK 6"
  - (H) COMBINATION CONCRETE CURB AND GUTTER, TYPE B-6.24
  - (I) COMBINATION CONCRETE CURB AND GUTTER, TYPE B-6.18
  - (J) COMBINATION CONCRETE CURB AND GUTTER, TYPE B-6.12
  - (K) CONCRETE GUTTER, TYPE A
  - (L) LONGITUDINAL CONSTRUCTION JOINT WITH NO. 6 X 30" EPOXY COATED TIE BARS AT 24" CENTERS FORMED IN PLACE (STD. 420001)
  - (M) LONGITUDINAL CONSTRUCTION JOINT WITH NO. 6 X 24" EPOXY COATED TIE BARS AT 24" CENTERS FORMED IN PLACE (STD. 420001)
  - (N) NOT USED
  - (O) SAWED LONGITUDINAL JOINT WITH NO. 6 X 30" EPOXY COATED TIE BARS AT 30" CENTERS (STD. 420001)
  - (P) BITUMINOUS MATERIALS (PRIME COAT) - 0.50 GAL/SQ YD
  - (Q) BITUMINOUS CONCRETE BINDER COURSE, SUPERPAVE, IL-19.0, N70
  - (R) BITUMINOUS CONCRETE SURFACE COURSE, SUPERPAVE, MIX "D", N70
  - (S) BITUMINOUS SHOULDERS SUPERPAVE 5"
  - (T) MODULAR BLOCK RETAINING WALL
  - (U) TOPSOIL 6"
  - (V) SEEDING AND MULCH
  - (W) SODDING

SEE PLAN AND PROFILE SHEETS FOR EXACT LOCATIONS OF EXISTING R.O.W., PROPOSED R.O.W., PROPOSED PERMANENT EASEMENTS, AND TEMPORARY CONSTRUCTION EASEMENTS.

SEE SHEET 12 FOR PROPOSED TYPICAL SECTIONS NOTES.

ILLINOIS DEPARTMENT OF TRANSPORTATION  
**PROPOSED TYPICAL SECTIONS**  
 DATE : 8-05  
 DRAWN BY : S.M.W.  
 CHECKED BY : R.L.H.  
 SCALE : NONE