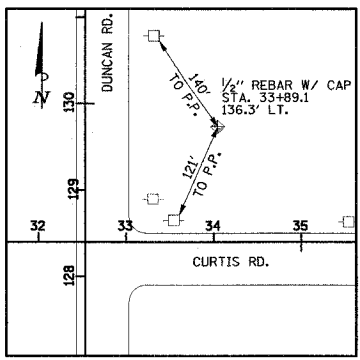
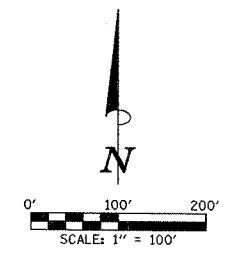
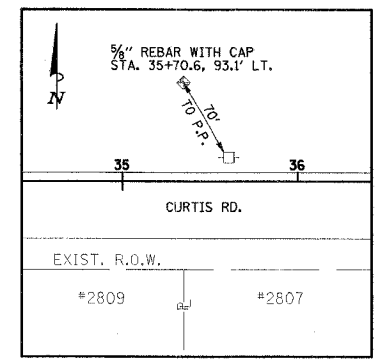


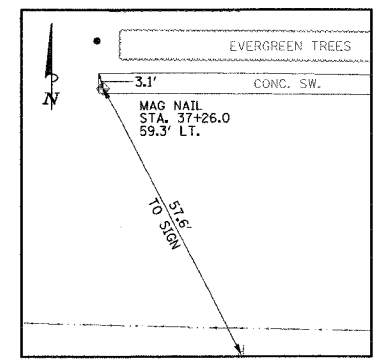
F.A.U. NO.	SECTION	COUNTY	TOTAL SHEETS	SHEET NO.
B07	00-00374-00-PV	CHAMPAIGN	149	17
STA.	TO STA.			
FED. ROAD DIST. NO. 7 ILLINOIS F.A. PROJECT M-5181(SB)				
CONTRACT NO. 91308				



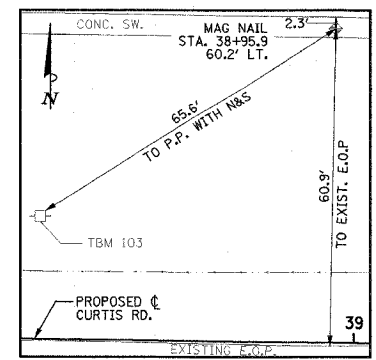
TIES TO CONTROL POINT "DC108"
LOCAL COORDINATES:
N 1239400.60
E 995131.19



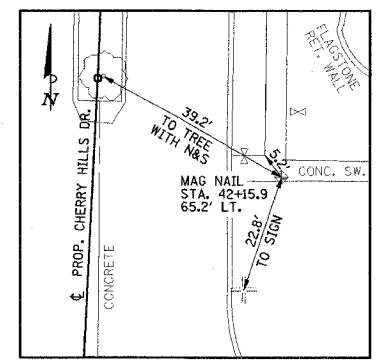
TIES TO CONTROL POINT "DC105"
LOCAL COORDINATES:
N 1239355.24
E 995312.19



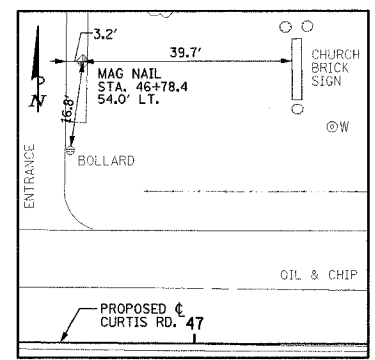
TIES TO CONTROL POINT "DC8"
LOCAL COORDINATES:
N 1239318.60
E 995467.17



TIES TO CONTROL POINT "DC9"
LOCAL COORDINATES:
N 1239318.60
E 995637.09

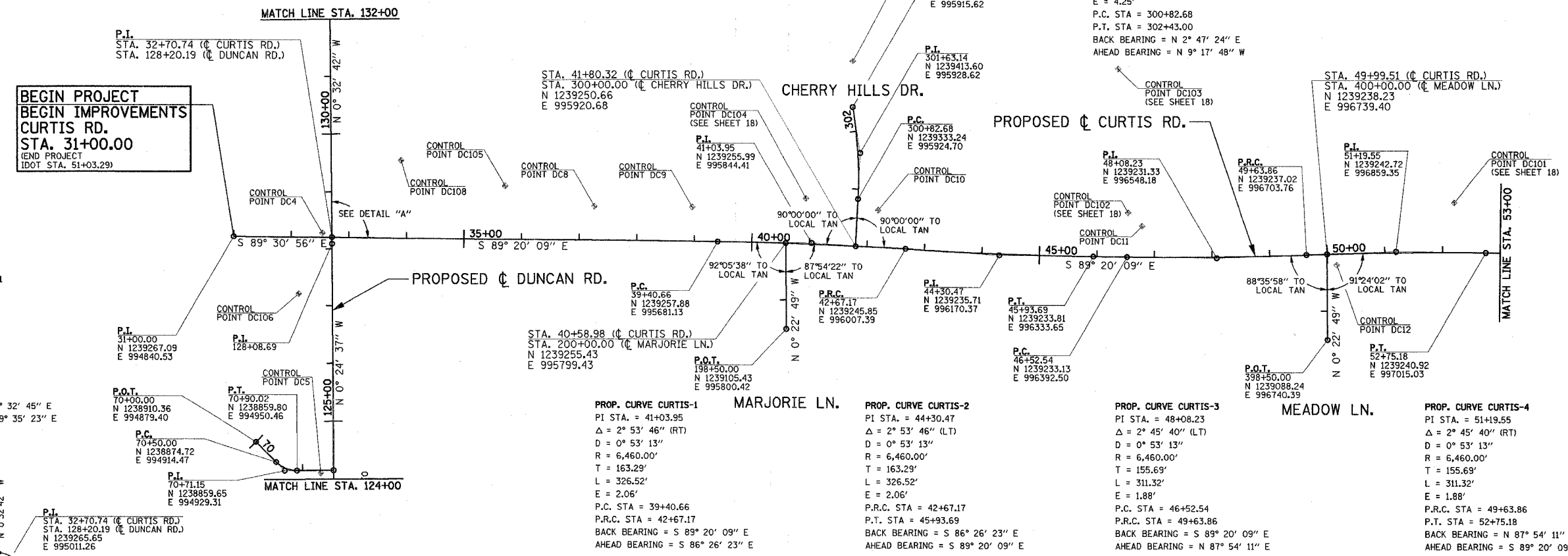


TIES TO CONTROL POINT "DC10"
LOCAL COORDINATES:
N 1239313.94
E 995959.77



TIES TO CONTROL POINT "DC11"
LOCAL COORDINATES:
N 1239286.92
E 996418.76

PROP. CURVE CHRYHIL-1
PI STA. = 301+63.14
 $\Delta = 12^\circ 05' 12''$ (LT)
D = $7^\circ 32' 20''$
R = 760.00'
T = 80.46'
L = 160.32'
E = 4.25'
P.C. STA = 300+82.68
P.T. STA = 302+43.00
BACK BEARING = $N 2^\circ 47' 24''$ E
AHEAD BEARING = $N 9^\circ 17' 48''$ W



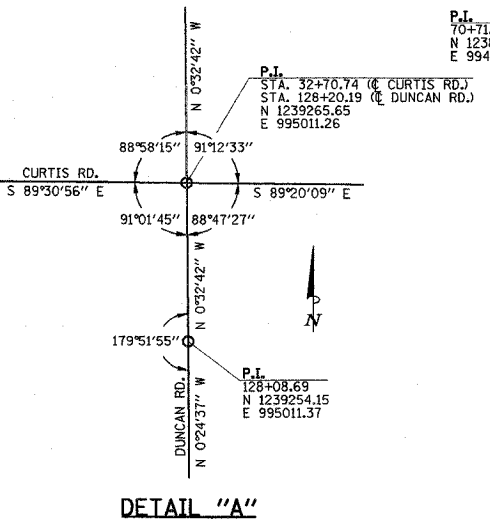
PROP. CURVE CHURCH-1
PI STA. = 70+71.15
 $\Delta = 45^\circ 51' 52''$ (LT)
D = $114^\circ 35' 29.6''$
R = 50.00'
T = 21.15'
L = 40.02'
E = 4.29'
P.C. STA = 70+50.00
P.T. STA = 70+90.02
BACK BEARING = $S 44^\circ 32' 45''$ E
AHEAD BEARING = $N 89^\circ 35' 23''$ E

PROP. CURVE CURTIS-1
PI STA. = 41+03.95
 $\Delta = 2^\circ 53' 46''$ (RT)
D = $0^\circ 53' 13''$
R = 6,460.00'
T = 163.29'
L = 326.52'
E = 2.06'
P.C. STA = 39+40.66
P.R.C. STA = 42+67.17
BACK BEARING = $S 89^\circ 20' 09''$ E
AHEAD BEARING = $S 86^\circ 26' 23''$ E

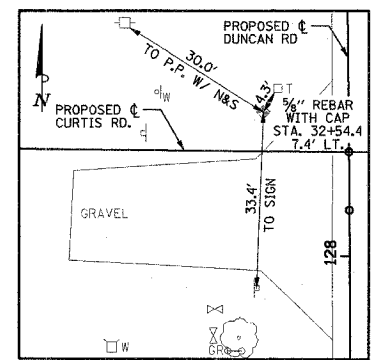
PROP. CURVE CURTIS-2
PI STA. = 44+30.47
 $\Delta = 2^\circ 53' 46''$ (LT)
D = $0^\circ 53' 13''$
R = 6,460.00'
T = 163.29'
L = 326.52'
E = 2.06'
P.R.C. STA = 42+67.17
P.T. STA = 45+93.69
BACK BEARING = $S 89^\circ 20' 09''$ E
AHEAD BEARING = $S 89^\circ 20' 09''$ E

PROP. CURVE CURTIS-3
PI STA. = 48+08.23
 $\Delta = 2^\circ 45' 40''$ (LT)
D = $0^\circ 53' 13''$
R = 6,460.00'
T = 155.69'
L = 311.32'
E = 1.88'
P.C. STA = 46+52.54
P.R.C. STA = 49+63.86
BACK BEARING = $S 89^\circ 20' 09''$ E
AHEAD BEARING = $N 87^\circ 54' 11''$ E

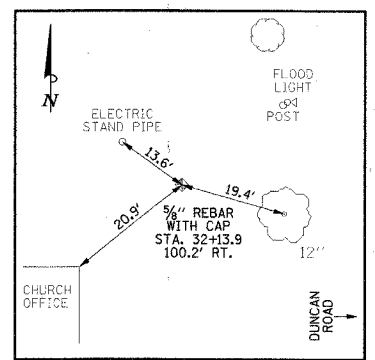
PROP. CURVE CURTIS-4
PI STA. = 51+19.55
 $\Delta = 2^\circ 45' 40''$ (RT)
D = $0^\circ 53' 13''$
R = 6,460.00'
T = 155.69'
L = 311.32'
E = 1.88'
P.R.C. STA = 49+63.86
P.T. STA = 52+75.18
BACK BEARING = $N 87^\circ 54' 11''$ E
AHEAD BEARING = $S 89^\circ 20' 09''$ E



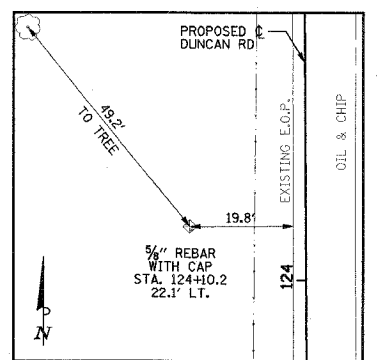
DETAIL "A"



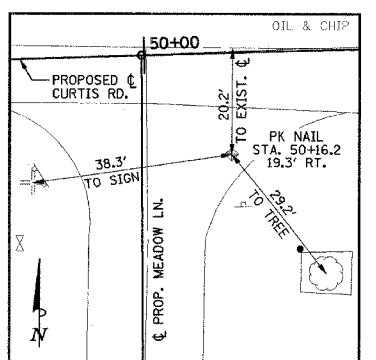
TIES TO CONTROL POINT "DC4"
LOCAL COORDINATES:
N 1239273.23
E 994994.93



TIES TO CONTROL POINT "DC106"
LOCAL COORDINATES:
N 1239165.90
E 994953.54



TIES TO CONTROL POINT "DC5"
LOCAL COORDINATES:
N 1238855.54
E 994992.09



TIES TO CONTROL POINT "DC12"
LOCAL COORDINATES:
N 1239219.43
E 996756.66

ILLINOIS DEPARTMENT OF TRANSPORTATION
HORIZONTAL ALIGNMENT LAYOUT AND CONTROL
DATE : 8-05
DRAWN BY : S.M.W.
CHECKED BY : R.L.H.
SCALE : 1"=100'