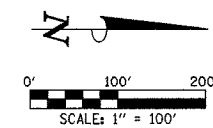
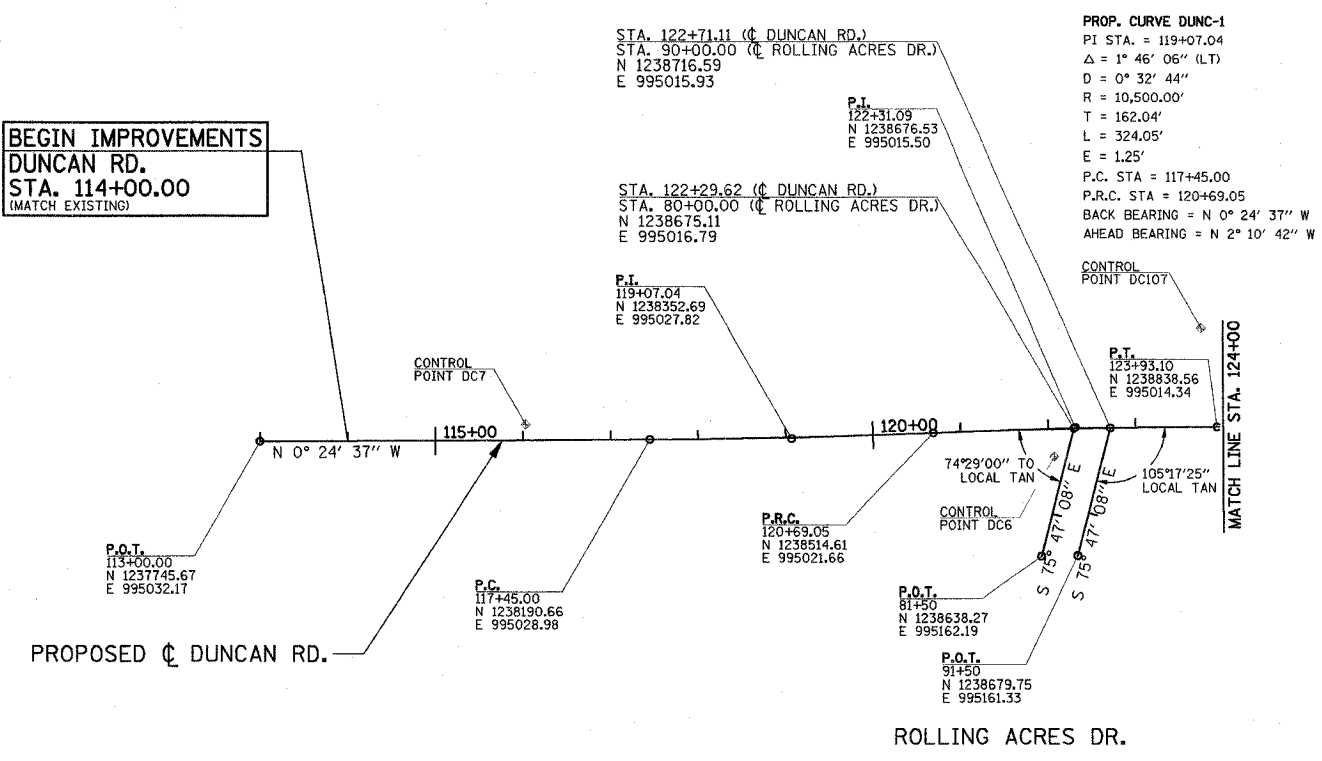


F.A.U. RTE.	SECTION	COUNTY	TOTAL SHEETS	SHEET NO.
807	00-00374-00-PV	CHAMPAIGN	149	19
STA. TO STA.		TO STA.		
FED. ROAD DIST. NO. 7		ILLINOIS		F.A. PROJECT M-5181(38)

CONTRACT NO. 91308



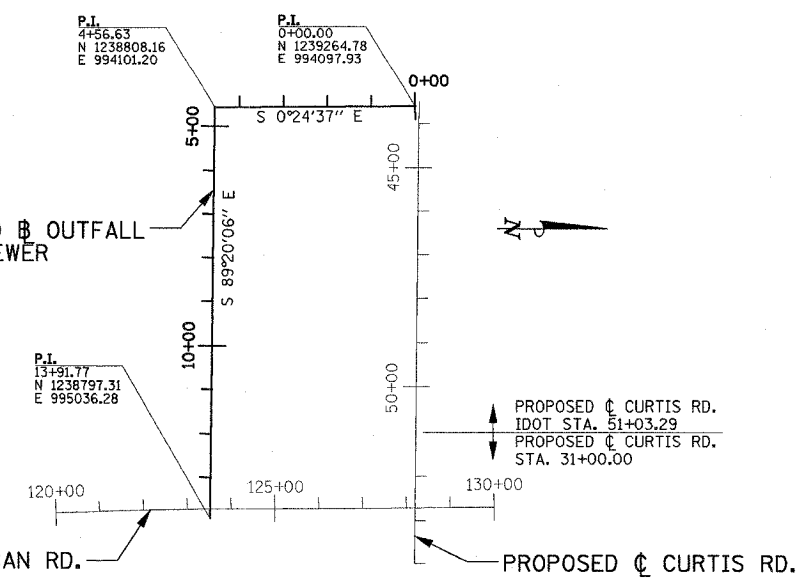
**BEGIN IMPROVEMENTS
DUNCAN RD.
STA. 114+00.00
(MATCH EXISTING)**



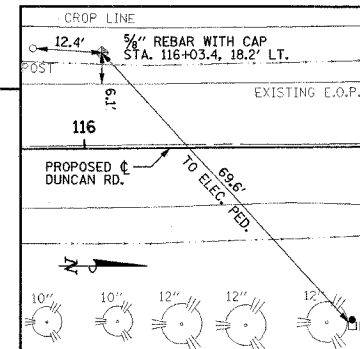
PROP. CURVE DUNC-1
PI STA. = 119+07.04
 $\Delta = 1^\circ 46' 06''$ (LT)
 $D = 0^\circ 32' 44''$
 $R = 10,500.00'$
 $T = 162.04'$
 $L = 324.05'$
 $E = 1.25'$
P.C. STA = 117+45.00
P.R.C. STA = 120+69.05
BACK BEARING = $N 0^\circ 24' 37''$ W
AHEAD BEARING = $N 2^\circ 10' 42''$ W

PROP. CURVE DUNC-2
PI STA. = 122+31.09
 $\Delta = 1^\circ 46' 06''$ (RT)
 $D = 0^\circ 32' 44''$
 $R = 10,500.00'$
 $T = 162.04'$
 $L = 324.05'$
 $E = 1.25'$
P.R.C. STA = 120+69.05
P.T. STA = 123+93.10
BACK BEARING = $2^\circ 10' 42''$ W
AHEAD BEARING = $N 0^\circ 24' 37''$ W

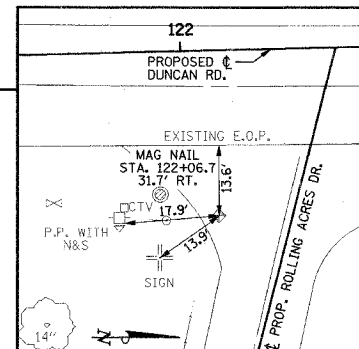
**PROPOSED B OUTFALL
STORM SEWER**



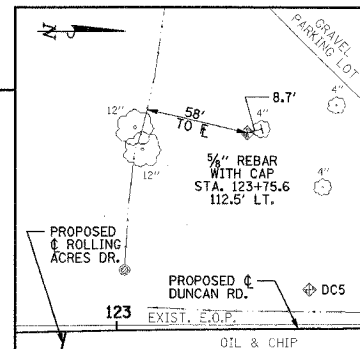
**OUTFALL STORM SEWER
HORIZONTAL ALIGNMENT LAYOUT DETAIL
NO SCALE**



TIES TO CONTROL POINT "DC7"
LOCAL COORDINATES:
N 1238048.97
E 995011.79



TIES TO CONTROL POINT "DC6"
LOCAL COORDINATES:
N 1238652.96
E 995043.02

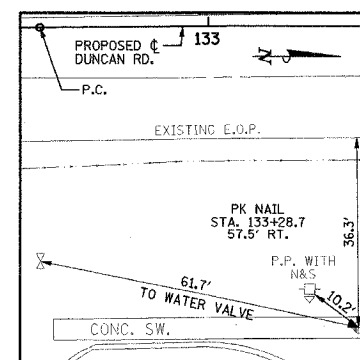
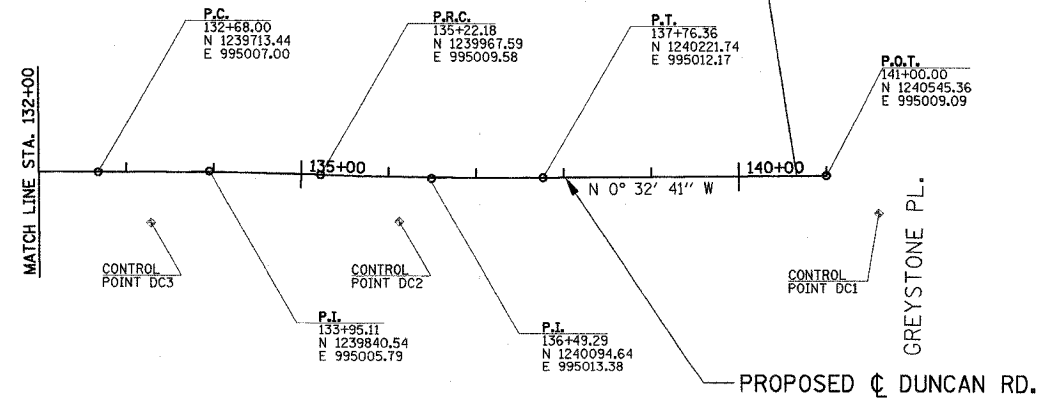


TIES TO CONTROL POINT "DC107"
LOCAL COORDINATES:
N 1238820.05
E 994902.03

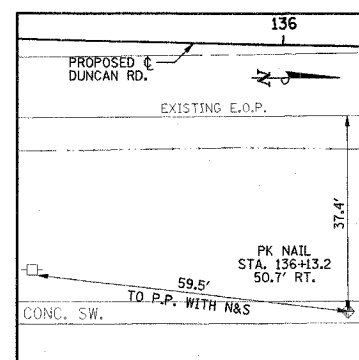
PROP. CURVE DUNC-3
PI STA. = 133+95.11
 $\Delta = 2^\circ 15' 16''$ (RT)
 $D = 0^\circ 53' 13''$
 $R = 6,460.00'$
 $T = 127.11'$
 $L = 254.18'$
 $E = 1.25'$
P.C. STA = 132+68.00
P.R.C. STA = 135+22.18
BACK BEARING = $N 0^\circ 32' 41''$ W
AHEAD BEARING = $N 1^\circ 42' 35''$ E

**END IMPROVEMENTS
DUNCAN RD.
STA. 140+66.00
(MATCH EXISTING)**

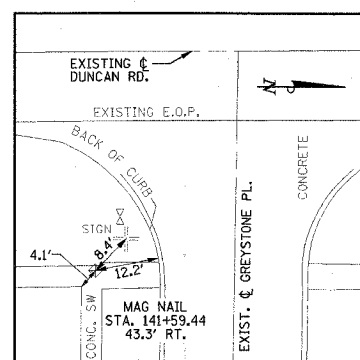
PROP. CURVE DUNC-4
PI STA. = 136+49.29
 $\Delta = 2^\circ 15' 16''$ (LT)
 $D = 0^\circ 53' 13''$
 $R = 6,460.00'$
 $T = 127.11'$
 $L = 254.18'$
 $E = 1.25'$
P.R.C. STA = 135+22.18
P.T. STA = 137+76.36
BACK BEARING = $N 1^\circ 42' 35''$ E
AHEAD BEARING = $N 0^\circ 32' 41''$ W



TIES TO CONTROL POINT "DC3"
LOCAL COORDINATES:
N 1239774.09
E 995064.25



TIES TO CONTROL POINT "DC2"
LOCAL COORDINATES:
N 1240057.82
E 995062.37



TIES TO CONTROL POINT "DC1"
LOCAL COORDINATES:
N 1240605.21
E 995051.82

ILLINOIS DEPARTMENT OF TRANSPORTATION
**HORIZONTAL ALIGNMENT LAYOUT
AND CONTROL**

DATE : 8-05
DRAWN BY : S.M.W.
CHECKED BY : R.L.H.
SCALE : 1"=100'