

MAILBOXES SHALL BE TEMPORARILY RELOCATED AS DIRECTED BY THE ENGINEER IN ACCORDANCE WITH THE SPECIAL PROVISIONS.

SEE PLAN AND PROFILE SHEETS FOR STORM SEWER REMOVAL AND STRUCTURE REMOVAL AND ADJUSTMENT SCHEDULES.

ALL VARIOUS SIGNS WHICH INTERFERE WITH CONSTRUCTION OPERATIONS SHALL BE REMOVED AND RELOCATED AS DIRECTED BY THE ENGINEER. SEE SPECIAL PROVISIONS.

REMOVE EXISTING CULVERT = 20 FT. (NO TRENCH BACKFILL REQUIRED)
RT. STA. 51+76 TO RT. STA. 51+96

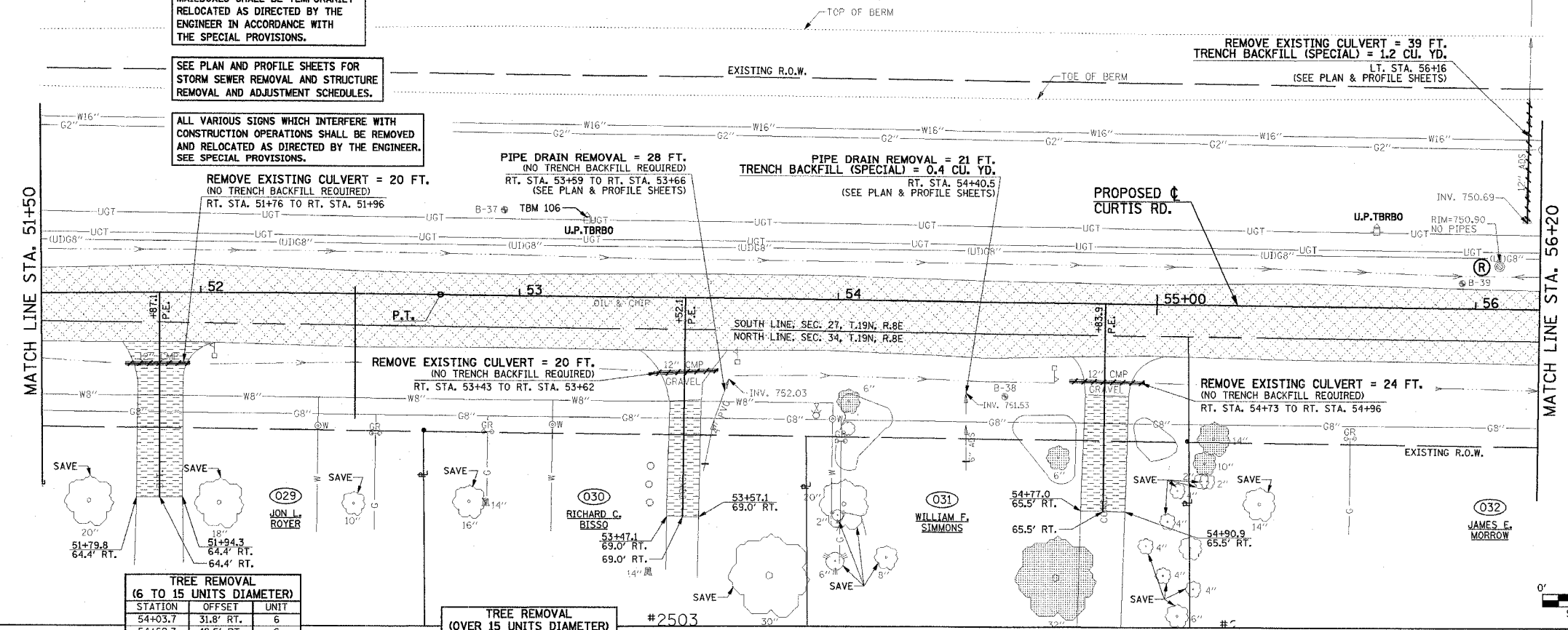
PIPE DRAIN REMOVAL = 28 FT. (NO TRENCH BACKFILL REQUIRED)
RT. STA. 53+59 TO RT. STA. 53+66 (SEE PLAN & PROFILE SHEETS)

PIPE DRAIN REMOVAL = 21 FT. TRENCH BACKFILL (SPECIAL) = 0.4 CU. YD. (SEE PLAN & PROFILE SHEETS)
RT. STA. 54+40.5

REMOVE EXISTING CULVERT = 39 FT. TRENCH BACKFILL (SPECIAL) = 1.2 CU. YD. (SEE PLAN & PROFILE SHEETS)
LT. STA. 56+16

MATCH LINE STA. 51+50

MATCH LINE STA. 56+20



TREE REMOVAL (6 TO 15 UNITS DIAMETER)

STATION	OFFSET	UNIT
54+03.7	31.8' RT.	6
54+69.7	48.5' RT.	6
55+15.7	49.7' RT.	10
55+18.5	41.9' RT.	14
500+71.9	¢	6
500+93.1	¢	6

TREE REMOVAL (OVER 15 UNITS DIAMETER)

STATION	OFFSET	UNIT
54+69.4	87.0' RT.	32
56+98.2	43.7' RT.	32

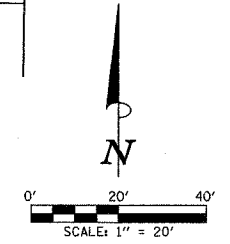
PAVING REMOVAL SCHEDULE

LOCATION	PAVEMENT REM (SQ YD)	DRIVE PAVEMENT REM (SQ YD)	SIDEWALK REM (SQ FT)
51+50.0 ¢ TO 56+20.0 ¢	1,246.9		
51+87.1 RT. - P.E.		83.4	
53+52.1 RT. - P.E.		40.7	
54+83.9 RT. - P.E.		56.2	
56+20.0 ¢ TO 60+70.0 ¢	1,180.3		
WYNSTONE DRIVE	759.1		
57+13.2 RT. - P.E.		16.6	
WYNSTONE DRIVE LT.			275.6
WYNSTONE DRIVE RT.			280.6

NOTE: THE PAVEMENT REMOVAL AND/OR DRIVEWAY PAVEMENT REMOVAL SHALL INCLUDE ANY CURBS THAT HAVE BEEN CONSTRUCTED MONOLITHIC WITH THE PAVEMENT. THE COST OF REMOVING THE CURBS SHALL BE INCLUDED IN THE CONTRACT UNIT PRICE FOR "PAVEMENT REMOVAL" AND/OR "DRIVEWAY PAVEMENT REMOVAL".

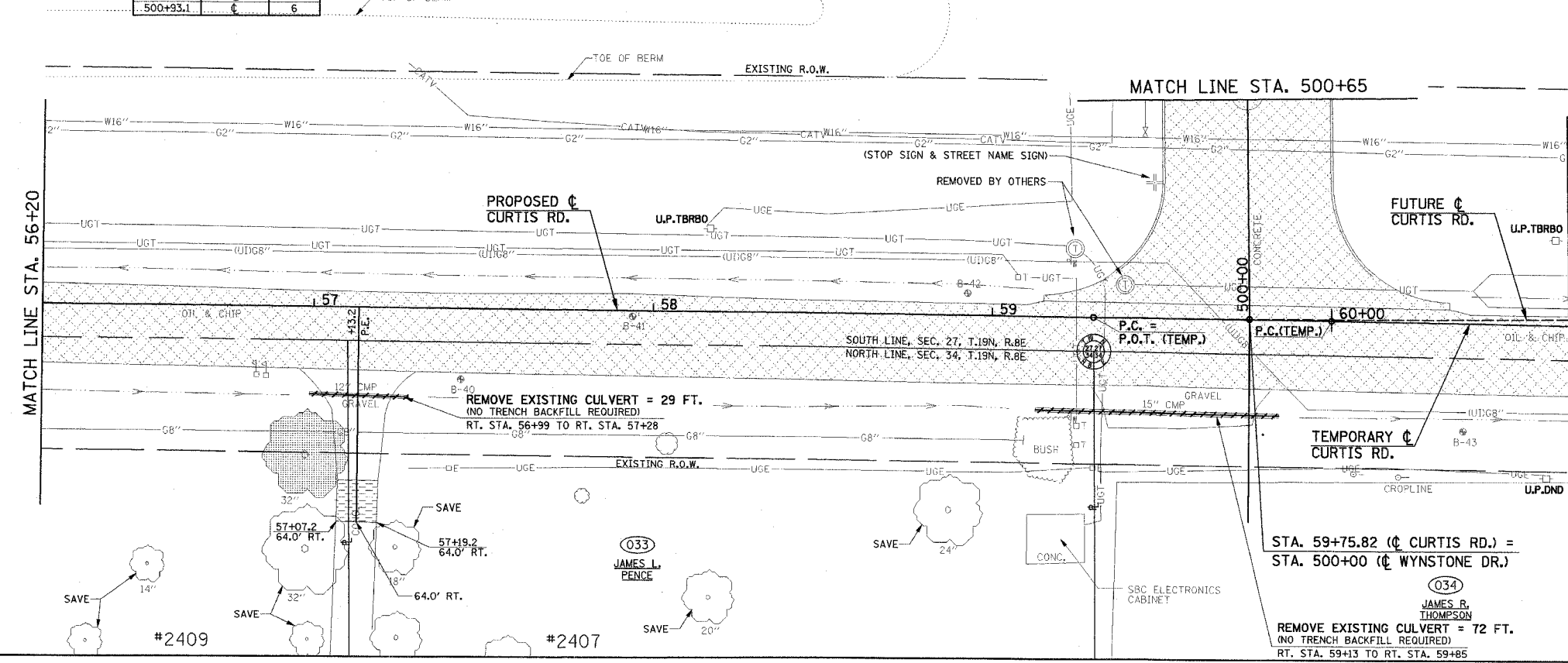
LEGEND

- (A) STRUCTURE TO BE ADJUSTED
- (R) STRUCTURE TO BE REMOVED
- (F) STRUCTURE TO BE FILLED
- (TM) TELEPHONE MANHOLE TO BE ADJUSTED BY OTHERS
- U.P.TBRBO UTILITY POLE - TO BE RELOCATED BY OTHERS
- U.P.DND UTILITY POLE - DO NOT DISTURB
- 15' TREE REMOVAL
- DRIVEWAY PAVEMENT REMOVAL
- PAVEMENT REMOVAL
- SIDEWALK REMOVAL
- CULVERT TO BE REMOVED



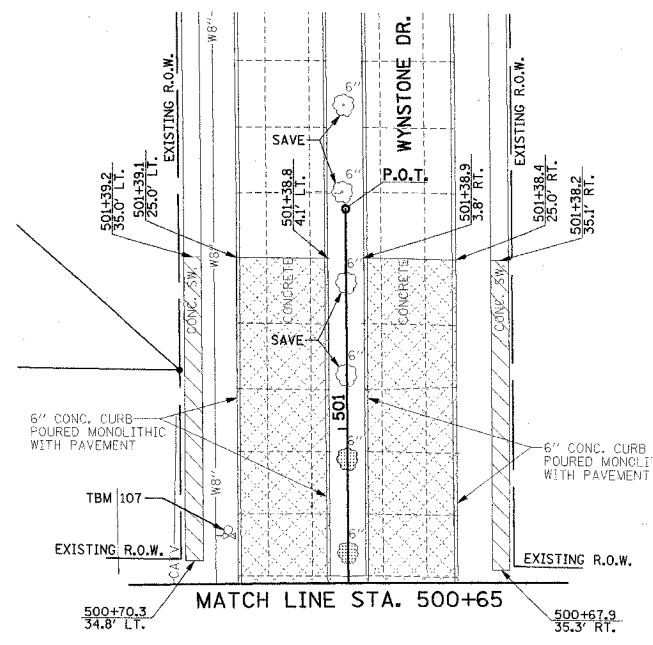
MATCH LINE STA. 56+20

MATCH LINE STA. 60+70



#2409

#2407



ILLINOIS DEPARTMENT OF TRANSPORTATION

REMOVALS/RELOCATIONS PLAN

DATE : 8-05
DRAWN BY : S.M.W.
CHECKED BY : R.L.H.

SCALE : 1"=20'