

SEC. 27, T.19 N., R.8 E., 3rd P.M.
CHAMPAIGN COUNTY, ILLINOIS

F.A.U. R.T.L.	SECTION	COUNTY	TOTAL SHEETS	SHEET NO.
807	00-00374-00-PV	CHAMPAIGN	149	31
STA. 31+00		TO STA. 33+90		
FED. ROAD DIST. NO. 7 ILLINOIS F.A. PROJECT M-5181(38)				
CONTRACT NO. 91308				

- LEGEND**
- PROPOSED SIDEWALK RAMP (SEE DETAIL)
 - PROPOSED AGGREGATE SUBGRADE, SPECIAL
 - REVERSE GUTTER SLOPE, -2%
 - REVERSE SIDEWALK SLOPE, -2%
 - PROPOSED SODDING FOR DITCH LINING
 - PIPE UNDERDRAINS 6"
 - PLUG UPSTREAM END OF FIELD TILE

SEE INTERSECTION DETAILS FOR ADDITIONAL INFORMATION.

SEE SCHEDULE OF QUANTITIES FOR TYPICAL SECTION PAVEMENT PAY ITEMS AND THEIR LOCATIONS.

- NOTES**
- PERMANENT SURVEY MARKERS = 1 EACH
SURVEY MARKER VAULT = 1 EACH
STA. 32+80.98, 11.50' RT.
SEE DETAIL SHEET AND SPECIAL PROVISIONS

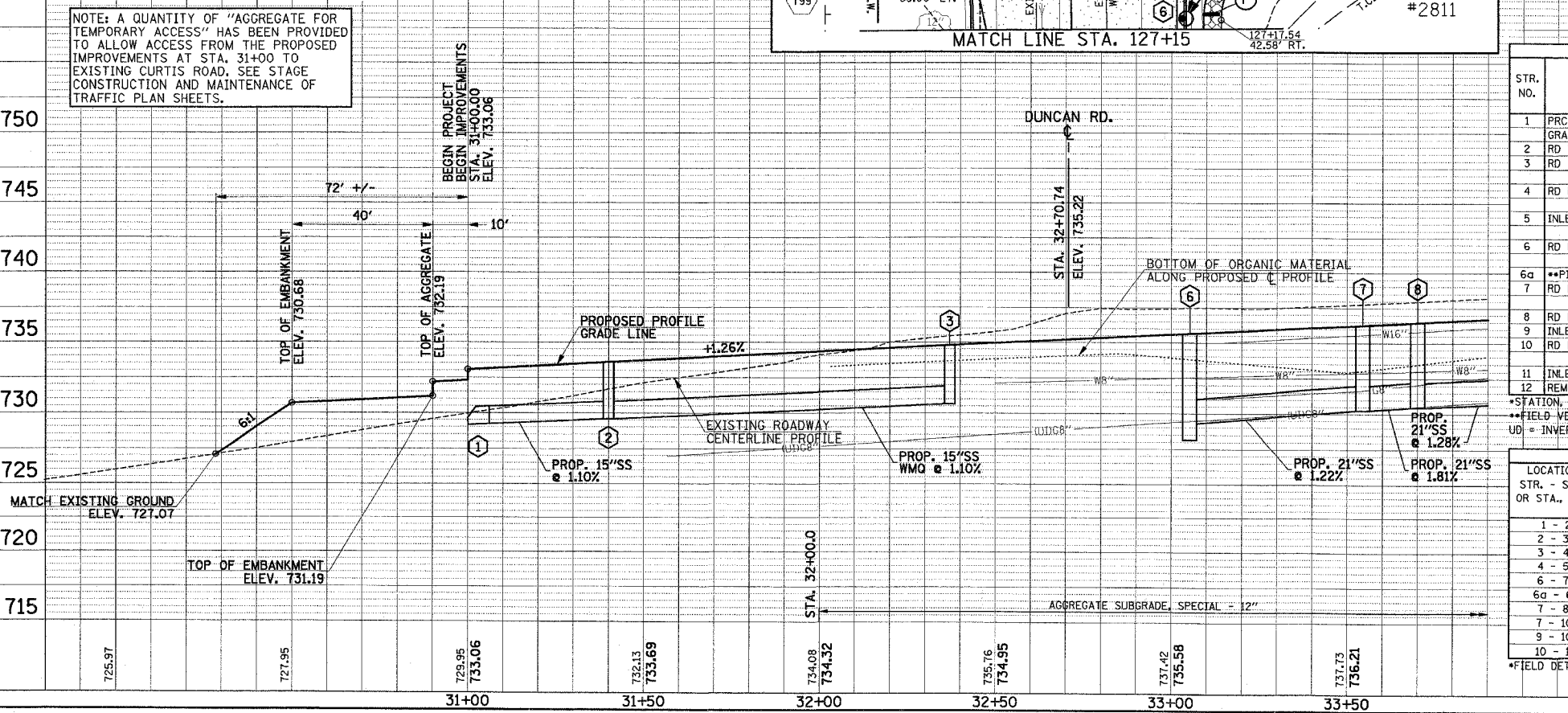
TEMPORARY CONSTRUCTION EASEMENT STATIONS AND OFFSETS

POINT	STATION	LOCATION
092	NOT USED	
093	NOT USED	
094	NOT USED	
095	33+87.00	70.50' RT.
096	33+81.04	81.50' LT.

TREE PLANTING EASEMENT STATIONS AND OFFSETS

POINT	STATION	OFFSET
T98	29+82.15	90.65' RT.
T99	32+02.18	91.28' RT.

SEC. 34, T.19 N., R.8 E., 3rd P.M.
CHAMPAIGN COUNTY, ILLINOIS



TBM 102 - 6" GEAR HEAD SPIKE, SOUTH SIDE OF POWER POLE, AT N.E. CORNER OF CURTIS ROAD AND DUNCAN RD. STA. 33+41, 24' LT., ELEV. 738.86

STORM SEWER STRUCTURE SCHEDULE

STR. NO.	STRUCTURE TYPE	OFF-SET SIDE	STA. OF C/L 2 FT. OPENING	OFF-SET OF C/L 2 FT. OPENING	STA. OF C/L STR.	OFF-SET OF C/L STR.	EX. T/O FRAME/GRATE ELEV.	PR. T/O FRAME/GRATE ELEV.	PR. T/O FLAT SLAB TOP ELEV.	INVERT IN ELEV.	U.S. STR. NO.	INVERT OUT ELEV.	D.S. STR. NO.
1	PRC FLAR END SEC 15" GRATING-C FL END S 15"	LT			*31+00.00	*66.00						*729.15	DITCH
2	RD INLETS TB T1F CL	LT	31+40.00	65.50	31+40.00	66.00	733.40	732.48	729.57	3	729.57	1	
3	RD INLETS TB T3 F&G	LT	129+13.00	31.80	129+13.00	32.30	734.44	733.44	730.65	4	730.65	2	
4	RD MAN 4 DIA T3V F&G	LT	129+35.00	31.80	129+35.00	32.80	734.50	733.50	730.95	121	730.75	3	
5	INLETS TA T3TM G	RT			129+35.00	38.50	734.71		730.95	5	731.71	4	
6	RD MAN 5 DIA T3V F&G	RT	127+18.00	31.80	127+18.00	33.30	733.62	732.62	729.27	7	728.17	108	
6a	**PIPE CONNECTION	RT			127+38.8	39.5			**	6a	**	6	
7	RD MAN 5 DIA T3V F&G	RT	33+54.26	32.38	33+54.40	33.87	735.78	734.78	730.25	8	730.25	6	
8	RD MAN 5 DIA T3V F&G	RT	33+70.00	31.80	33+70.00	33.30	735.99	734.99	730.46	13	730.46	7	
9	INLETS TA T3V F&G	LT			33+39.67	35.05	735.87					732.56	10
10	RD MAN 4 DIA T3V F&G	LT	33+54.36	31.97	33+54.40	32.97	736.02	735.02	732.51	9	732.51	7	
11	INLETS TA T3V F&G	LT			33+70.00	31.80	736.14		732.51	11		732.77	10
12	REMOVED BY OTHERS	LT			33+63.54	19.80	738.42						

STORM SEWER PIPE SCHEDULE

LOCATION STR. - STR. OR STA., O.S.	STORM SEW CL A 1 12 (FOOT)	STORM SEW CL A 1 15 (FOOT)	STORM SEW CL A 1 21 (FOOT)	STORM SEW CL A 2 21 (FOOT)	SS1 WMO 15 (FOOT)	PIPE DRAINS 6 (FOOT)	GRADE %	TRENCH BACKFILL (SPECIAL) (CU YD)
1 - 2		32					1.10	
2 - 3					98		1.10	9.3
3 - 4		19					0.53	2.3
4 - 5	68						2.60	6.3
6 - 7			81				1.22	22.6
6a - 6						25	*	0.9
7 - 8				12			1.81	3.9
7 - 10	62						0.40	6.6
9 - 10	13						0.40	1.2
10 - 11	13						1.98	1.3

*FIELD DETERMINE. 1.00% DESIRABLE.