

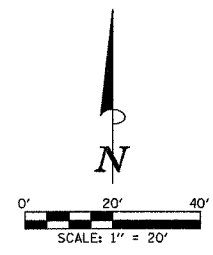
SEC. 27, T.19 N., R.8 E., 3rd P.M.  
CHAMPAIGN COUNTY, ILLINOIS

MATCH EXIST. ENT.  
46+42.3, 58.6' RT.  
64.3' C.E. (BIT.) @ 4.0%

F.A.U. RTE.	SECTION	COUNTY	TOTAL SHEETS	SHEET NO.
807	00-00374-00-PW	CHAMPAIGN	149	35
STA. 41+10		TO STA. 43+70		
FED. ROAD DIST. NO. 7 ILLINOIS F.A. PROJECT M-518(138)				
CONTRACT NO. 91308				

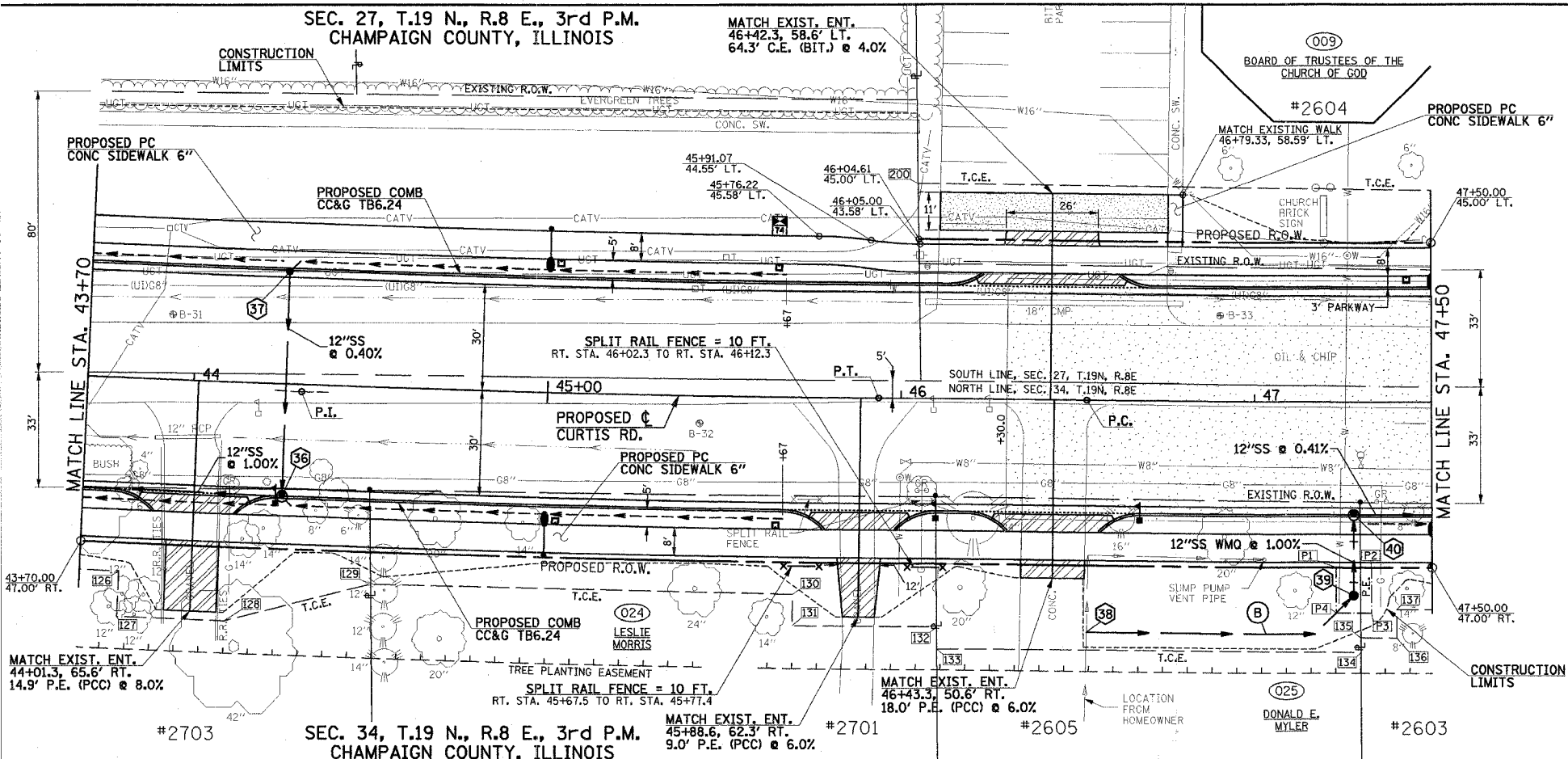
LEGEND

- PROPOSED PCC DRIVEWAY PAVEMENT (SEE DETAIL)
- PROPOSED AGGREGATE SUBGRADE, SPECIAL
- INCIDENTAL BITUMINOUS SURFACING, 8" (PLACE IN 2 LIFTS)
- PIPE UNDERDRAINS 6"
- BACKFLOW PREVENTER



SEE SCHEDULE OF QUANTITIES FOR TYPICAL SECTION PAVEMENT PAY ITEMS AND THEIR LOCATIONS.

DATE	BY	SURVEYED	ALIGNED	CHECKED	DESIGNED
PLAN		NOTE BOOK			

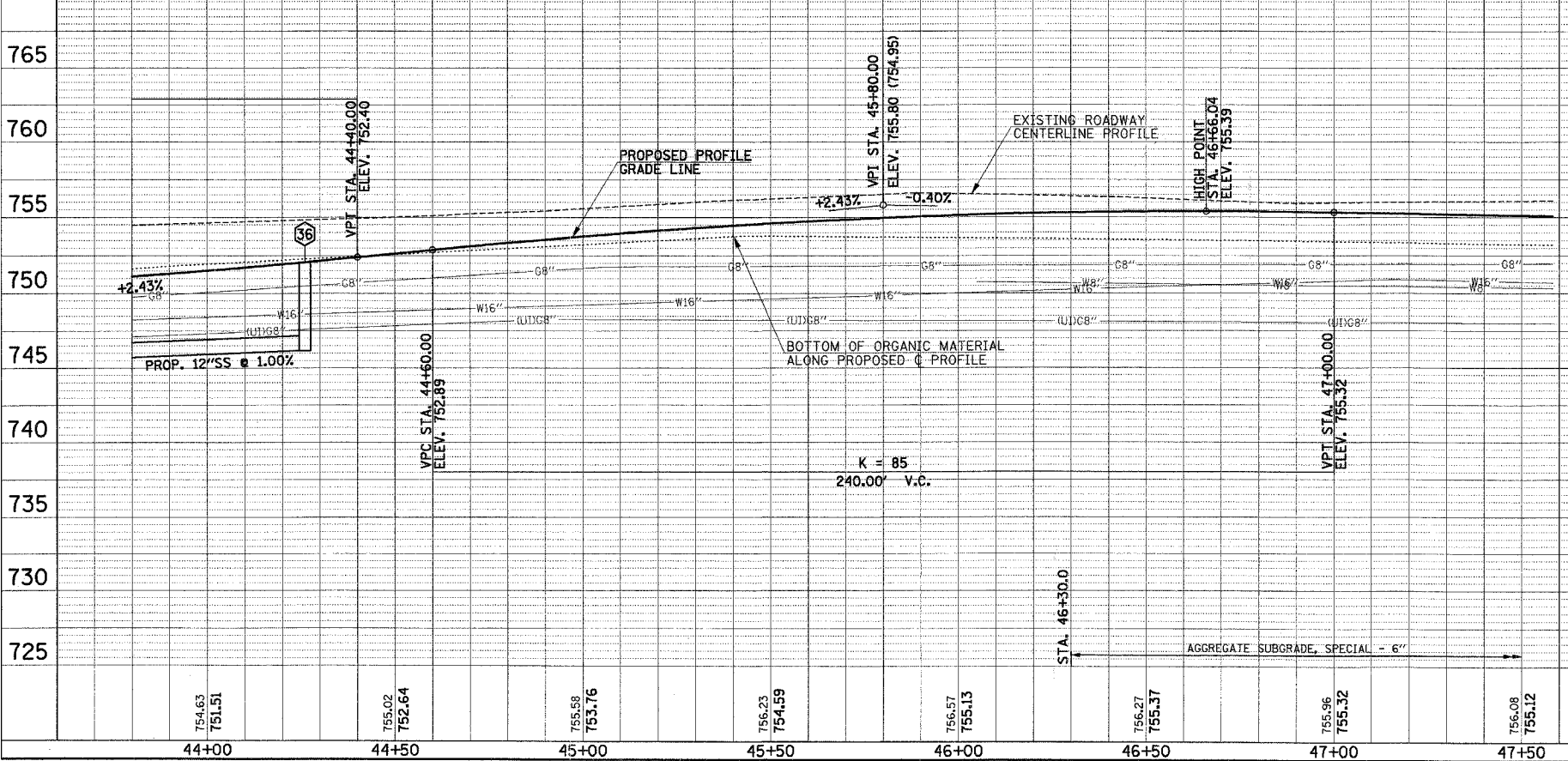


PROP. CURVE CURTIS-2  
PI STA. = 44+30.47  
 $\Delta = 2^\circ 53' 46''$  (LT)  
 $D = 0^\circ 53' 13''$   
 $R = 6,460.00'$   
 $T = 163.29'$   
 $L = 326.52'$   
 $E = 2.06'$   
P.R.C. STA = 42+67.17  
P.T. STA = 45+93.69  
S.E. = NONE

PERMANENT EASEMENT STATIONS AND OFFSETS		
POINT	STATION	LOCATION
P1	47+23.04	47.00' RT.
P2	47+32.96	47.00' RT.
P3	47+32.95	59.94' RT.
P4	47+23.05	59.94' RT.

TEMPORARY CONSTRUCTION EASEMENT STATIONS AND OFFSETS		
POINT	STATION	LOCATION
I26	43+81.00	55.00' RT.
I27	43+81.00	68.00' RT.
I28	44+11.00	68.00' RT.
I29	44+51.75	56.00' RT.
I30	45+70.00	56.00' RT.
I31	45+70.00	65.04' RT.
I32	46+04.25	61.00' LT.
I33	46+10.72	65.00' RT.
I34	46+10.83	71.00' RT.
I35	47+29.97	71.00' RT.
I36	47+29.95	67.00' RT.
I37	47+40.00	67.00' RT.
I37	47+40.00	59.00' RT.

DATE	BY	SURVEYED	GRADES CHECKED	STRUCTURE	NOTES CHECKED
PROFILE					



STORM SEWER STRUCTURE SCHEDULE													
STR. NO.	STRUCTURE TYPE	OFF-SET SIDE	STA. OF C/L 2 FT. OPENING	OFFSET OF C/L 2 FT. OPENING	STA. OF C/L STR.	OFFSET OF C/L STR.	EX. T/O FRAME/GRATE ELEV.	PR. T/O FRAME/GRATE ELEV.	PR. T/O FLAT SLAB TOP ELEV.	INVERT IN ELEV.	U.S. STR. NO.	INVERT OUT ELEV.	D.S. STR. NO.
36	RD INLETS TB T3V F&G	RT	44+26.00	31.80	44+26.00	32.30	751.53	750.53	747.98	37	746.18	32	
37	INLET TA T3V F&G	LT	---	---	44+26.00	31.80	751.53	---	748.73	UD	748.22	36	
38	SUMP LINE CONNECTION	RT	---	---	46+53	66.00	---	---	---	---	---	---	
39	INLET TA T8G	RT	47+28.00	---	47+28.00	55.00	754.30	---	---	38	751.56	40	
40	RD INLETS TB T3V F&G	RT	47+28.00	31.80	47+28.00	32.30	754.67	753.67	751.36	39	751.36	41	

\*FIELD VERIFY LOCATION AND ELEVATION  
UD = INVERT OF 6" UNDERDRAIN

STORM SEWER PIPE SCHEDULE					
LOCATION STR. - STR. OR STA., O.S.	STORM SEW CL A 1 12 (FOOT)	SSI WMO 12 (FOOT)	PIPE DRAINS 6 (FOOT)	GRADE %	TRENCH BACKFILL (SPECIAL) (CU YD)
36 - 37	62			0.40	6.1
38 - 39			80**	.	
39 - 40		21		1.00	3.7
40 - 41	95			0.41	8.1

\*FIELD DETERMINE. 1.00% DESIRABLE.  
\*\*INSTALL BACKFLOW PREVENTER. SEE SPECIAL PROVISIONS.