

SEC. 27, T.19 N., R.8 E., 3rd P.M.  
CHAMPAIGN COUNTY, ILLINOIS

TEMPORARY CONSTRUCTION EASEMENT  
STATIONS AND OFFSETS

POINT	STATION	LOCATION	POINT	STATION	LOCATION
157	56+56.00	50.00' RT.	500	500+70.93	48.00' LT.
158	57+04.00	66.00' RT.	501	501+13.48	42.00' LT.
159	57+23.00	66.00' RT.	502	500+68.52	49.00' RT.
160	57+42.00	52.00' RT.	503	501+42.00	41.00' RT.
161	59+30.73	52.00' RT.	504	501+42.00	37.84' RT.

F.A.U. RTE.	SECTION	COUNTY	TOTAL SHEETS	SHEET NO.
807	00-00374-00-PV	CHAMPAIGN	149	38
STA. 56+20		TO STA. 60+70		
FED. ROAD DIST. NO. 7 ILLINOIS F.A. PROJECT M-5181(38)				
CONTRACT NO. 91308				

LEGEND

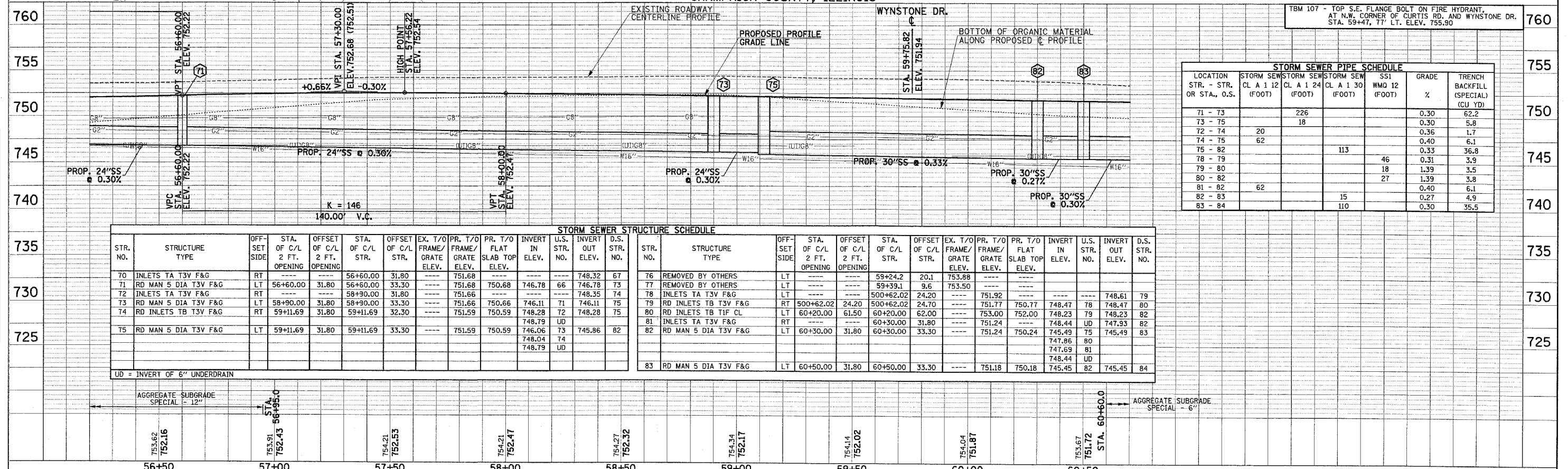
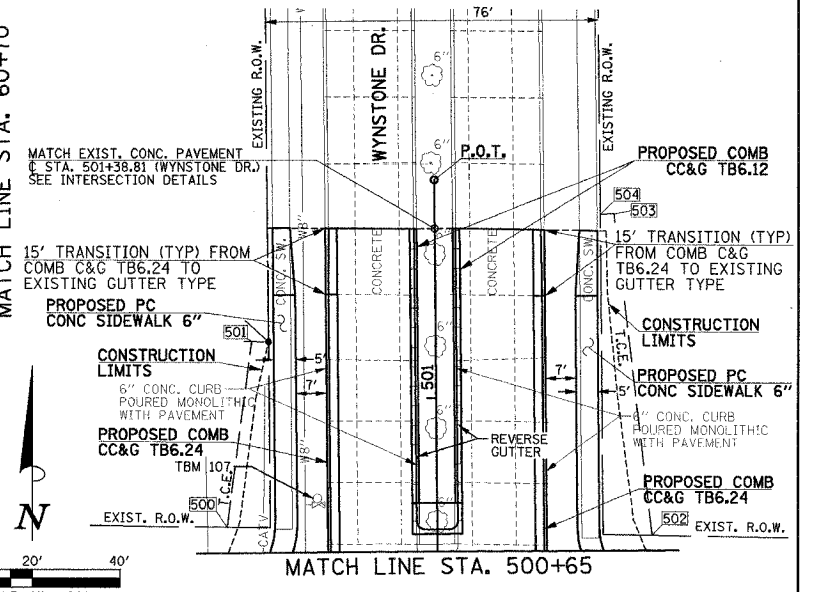
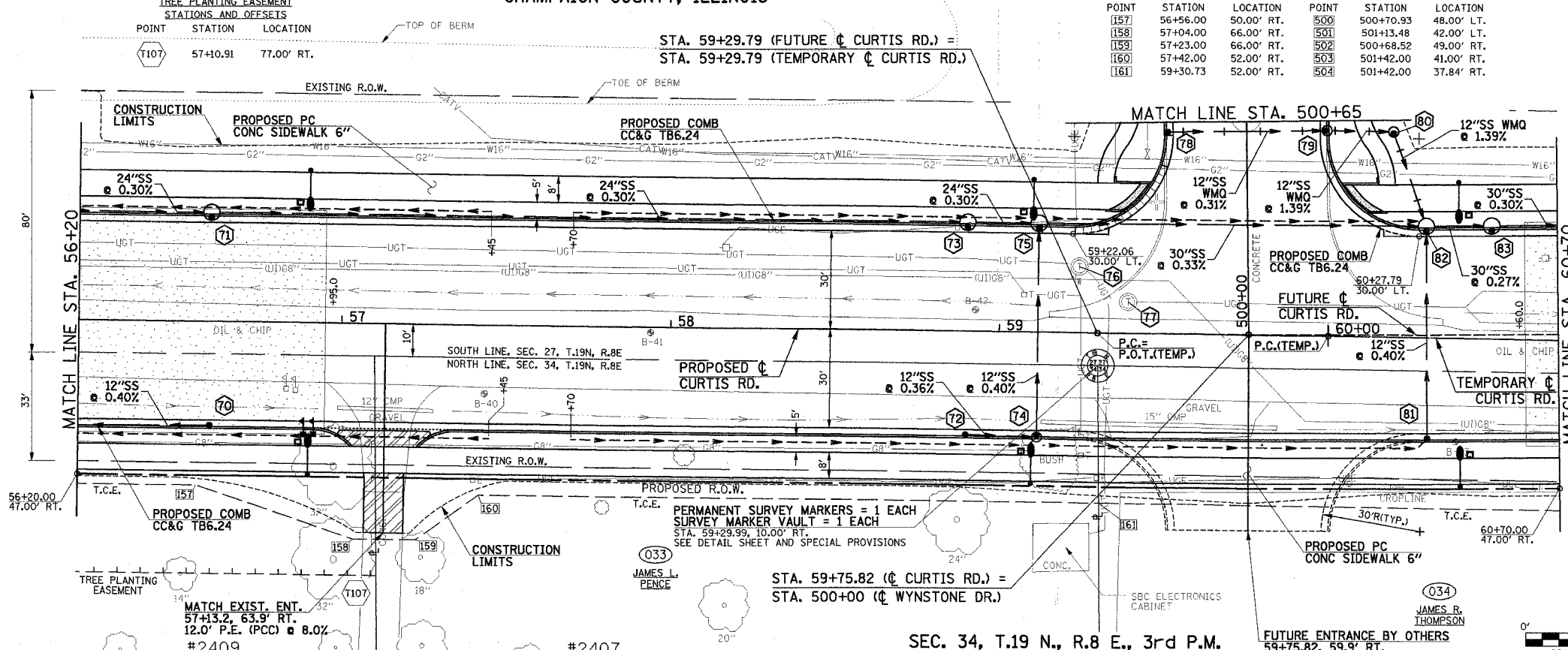
- PROPOSED PCC DRIVEWAY PAVEMENT (SEE DETAIL)
- PROPOSED SIDEWALK RAMP (SEE DETAIL)
- PROPOSED AGGREGATE SUBGRADE, SPECIAL
- REVERSE GUTTER SLOPE, -2%
- PIPE UNDERDRAINS 6"

SEE INTERSECTION DETAILS FOR ADDITIONAL INFORMATION.

SEE SCHEDULE OF QUANTITIES FOR TYPICAL SECTION PAVEMENT PAY ITEMS AND THEIR LOCATIONS.

DATE	
BY	
REVISION	
NO.	
DATE	
BY	
REVISION	
NO.	
DATE	
BY	
REVISION	
NO.	

DATE	
BY	
REVISION	
NO.	
DATE	
BY	
REVISION	
NO.	
DATE	
BY	
REVISION	
NO.	



LOCATION STR. - STR. OR STA., O.S.	STORM SEWER CL A 1 12 (FOOT)	STORM SEWER CL A 1 24 (FOOT)	STORM SEWER CL A 1 30 (FOOT)	SS1 WMO 12 (FOOT)	GRADE %	TRENCH BACKFILL (SPECIAL) (CU YD)
71 - 73		226			0.30	62.2
73 - 75		18			0.30	5.8
72 - 74	20				0.36	1.7
74 - 75	62				0.40	6.1
75 - 82			113		0.33	36.8
78 - 79				46	0.31	3.9
79 - 80				18	1.39	3.5
80 - 82				27	1.39	3.8
81 - 82	62				0.40	6.1
82 - 83			15		0.27	4.9
83 - 84			110		0.30	35.5

STR. NO.	STRUCTURE TYPE	OFF-SET SIDE	STA. OF C/L 2 FT. OPENING	OFFSET OF C/L 2 FT. OPENING	STA. OF C/L STR.	OFFSET OF C/L STR.	EX. T/O FRAME/GRATE ELEV.	PR. T/O FRAME/GRATE ELEV.	PR. T/O FLAT SLAB TOP ELEV.	INVERT IN ELEV.	U.S. STR. NO.	INVERT OUT ELEV.	D.S. STR. NO.
70	INLETS TA T3V F&G	RT	---	---	56+60.00	31.80	---	751.68	---	746.78	66	748.32	67
71	RD MAN 5 DIA T3V F&G	LT	56+60.00	31.80	56+60.00	33.30	---	751.68	750.68	746.78	73	746.78	73
72	INLETS TA T3V F&G	RT	---	---	58+90.00	31.80	---	751.66	---	746.11	74	748.35	74
73	RD MAN 5 DIA T3V F&G	LT	58+90.00	31.80	58+90.00	33.30	---	751.66	750.66	746.11	71	746.11	75
74	RD INLETS TB T3V F&G	RT	59+11.69	31.80	59+11.69	32.30	---	751.59	750.59	748.28	72	748.28	75
75	RD MAN 5 DIA T3V F&G	LT	59+11.69	31.80	59+11.69	33.30	---	751.59	750.59	746.06	73	745.86	82
76	REMOVED BY OTHERS	LT	---	---	59+24.2	20.1	---	753.88	---	---	---	---	---
77	REMOVED BY OTHERS	LT	---	---	59+39.1	9.6	---	753.50	---	---	---	---	---
78	INLETS TA T3V F&G	RT	---	---	500+62.02	24.20	---	751.92	---	---	---	---	---
79	RD INLETS TB T3V F&G	LT	500+62.02	24.20	500+62.02	24.70	---	751.77	750.77	748.47	78	748.47	80
80	RD INLETS TB TIF CL	RT	60+20.00	61.50	60+20.00	62.00	---	753.00	752.00	748.23	79	748.23	82
81	INLETS TA T3V F&G	RT	---	---	60+30.00	31.80	---	751.24	---	748.44	78	747.53	82
82	RD MAN 5 DIA T3V F&G	LT	60+30.00	31.80	60+30.00	33.30	---	751.24	750.24	745.49	75	745.49	83
83	RD MAN 5 DIA T3V F&G	LT	60+50.00	31.80	60+50.00	33.30	---	751.18	750.18	745.45	82	745.45	84