

SEC. 33, T.19 N., R.8 E., 3rd P.M.  
CHAMPAIGN COUNTY, ILLINOIS

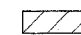

PROPOSED BITUMINOUS SHOULDERS  
TRANSITION FROM 2.5' AT STA. 114+00  
TO 8' AT STA. 116+70

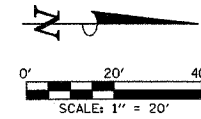
PROPOSED GUTTER TYPE A  
STA. 114+00 TO STA. 119+43

PROPOSED GUTTER OUTLET  
(SEE DETAIL SHEET)

BEGIN IMPROVEMENTS  
DUNCAN RD.  
STA. 114+00.00  
(MATCH EXISTING WIDTH)

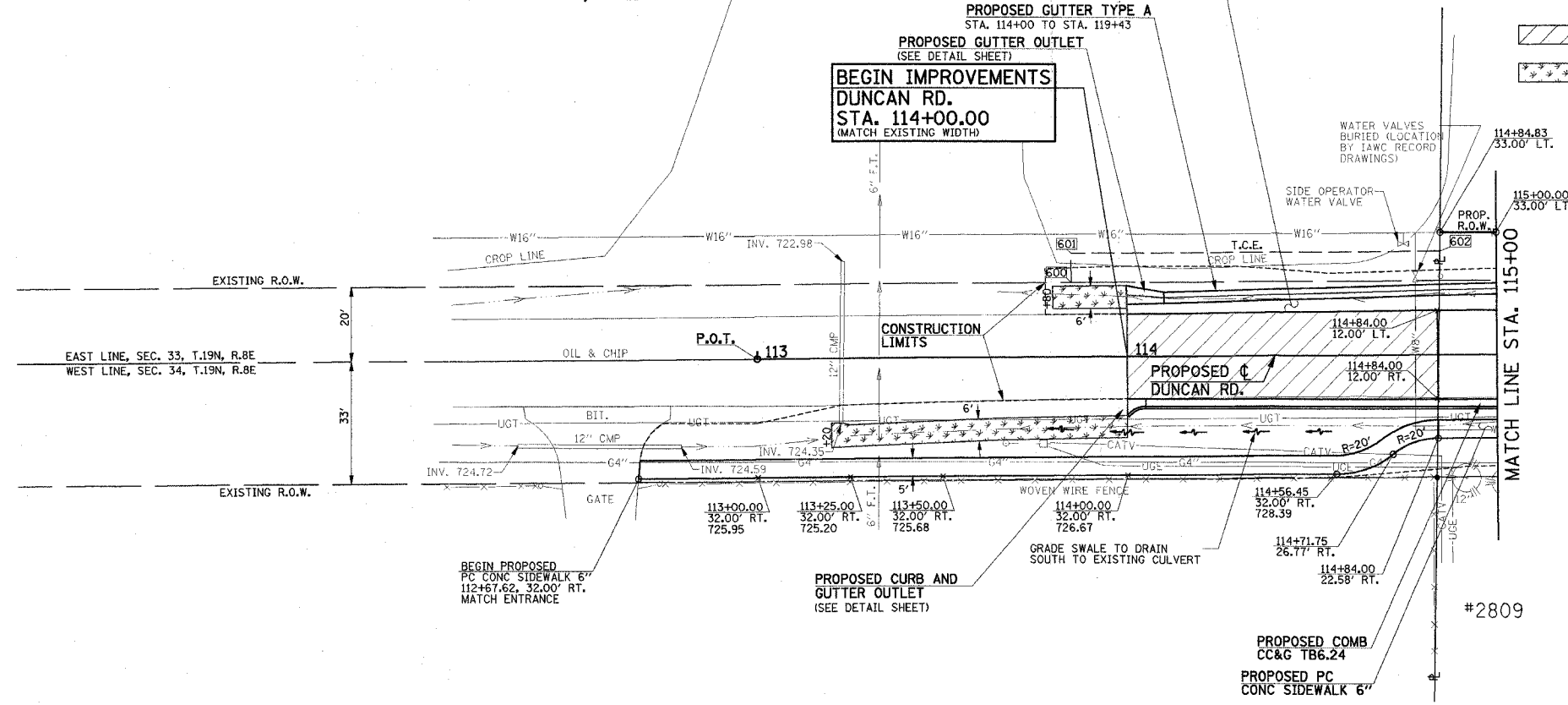
LEGEND

-  PROPOSED BITUMINOUS PAVEMENT TRANSITION - SEE TYPICAL SECTIONS
-  PROPOSED SODDING FOR DITCH LINING



SEE SCHEDULE OF QUANTITIES FOR  
TYPICAL SECTION PAVEMENT PAY ITEMS  
AND THEIR LOCATIONS.

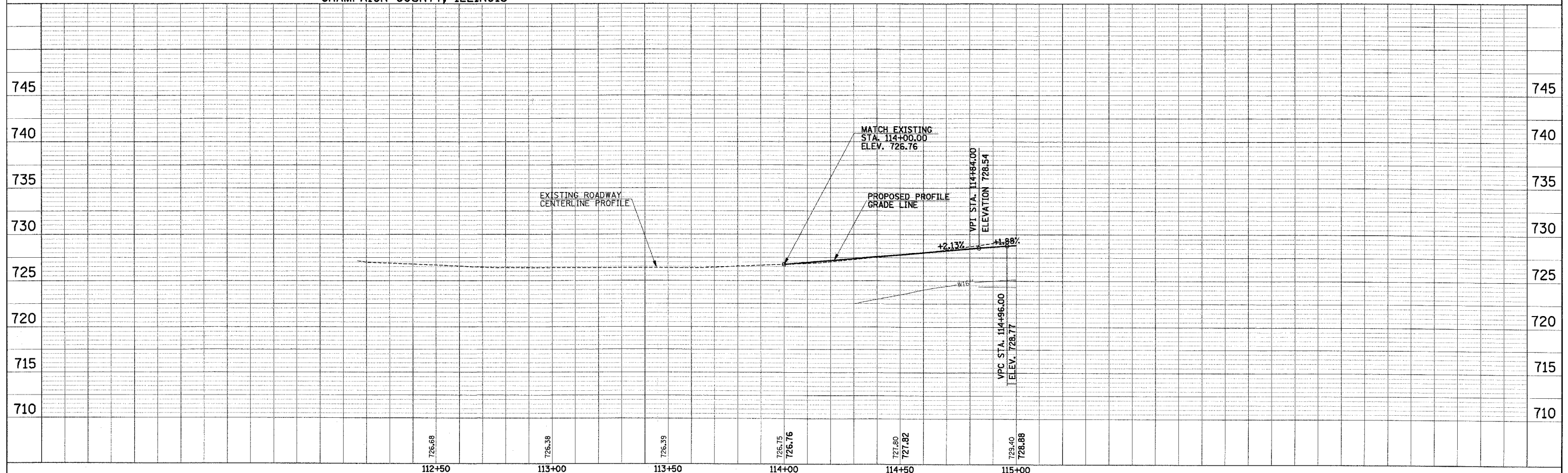
F.A. NO.	SECTION	COUNTY	TOTAL SHEETS	SHEET NO.
807	00-00374-00-PV	CHAMPAIGN	149	41
STA. 113+30		TO STA. 115+00		
FED. ROAD DIST. NO. 7 ILLINOIS F.A. PROJECT M-5181(38)				
CONTRACT NO. 91308				



SEC. 34, T.19 N., R.8 E., 3rd P.M.  
CHAMPAIGN COUNTY, ILLINOIS

TEMPORARY CONSTRUCTION EASEMENT STATIONS AND OFFSETS

POINT	STATION	LOCATION
600	113+85.00	20.00' LT.
601	113+85.00	28.00' LT.
602	114+84.74	28.00' LT.



PLAN SURVEYED BY DATE  
NOTE BOOK NO. CAD FILE NAME

PROFILE SURVEYED BY DATE  
NOTE BOOK NO. STATIONING NOTES CURVED