

SEC. 33, T.19 N., R.8 E., 3rd P.M.
CHAMPAIGN COUNTY, ILLINOIS

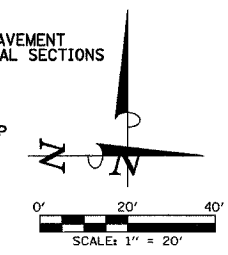
HELEN F. BIRKETT
#003

STA. 122+71.11 (C DUNCAN RD.) =
STA. 90+00.00 (C ROLLING ACRES DR.)

STA. 122+29.62 (C DUNCAN RD.) =
STA. 80+00.00 (C ROLLING ACRES DR.)

- LEGEND**
- PROPOSED BITUMINOUS PAVEMENT TRANSITION - SEE TYPICAL SECTIONS
 - PROPOSED PCC DRIVEWAY PAVEMENT (SEE DETAIL)
 - PROPOSED SIDEWALK RAMP (SEE DETAIL)
 - PROPOSED AGGREGATE SUBGRADE, SPECIAL
 - PROPOSED SODDING FOR DITCH LINING

F.A.U. RTE.	SECTION	COUNTY	TOTAL SHEET NO.
807	00-00374-00-PV	CHAMPAIGN	149 43
STA. 119+00 TO STA. 123+25			
FED. ROAD DIST. NO. 7 ILLINOIS		F.A. PROJECT M-5161(38)	
CONTRACT NO. 91308			



SEE INTERSECTION DETAILS FOR ADDITIONAL INFORMATION.

SEE SCHEDULE OF QUANTITIES FOR TYPICAL SECTION PAVEMENT PAY ITEMS AND THEIR LOCATIONS.

TEMPORARY CONSTRUCTION EASEMENT STATIONS AND OFFSETS

POINT	STATION	LOCATION
603	119+53.89	33.90' LT.
604	119+52.80	53.87' LT.
605	121+32.26	62.50' LT.
606	121+33.25	42.52' LT.
621	121+81.00	40.87' RT.
622	121+71.89	130.35' RT.
623	122+79.39	54.39' RT.

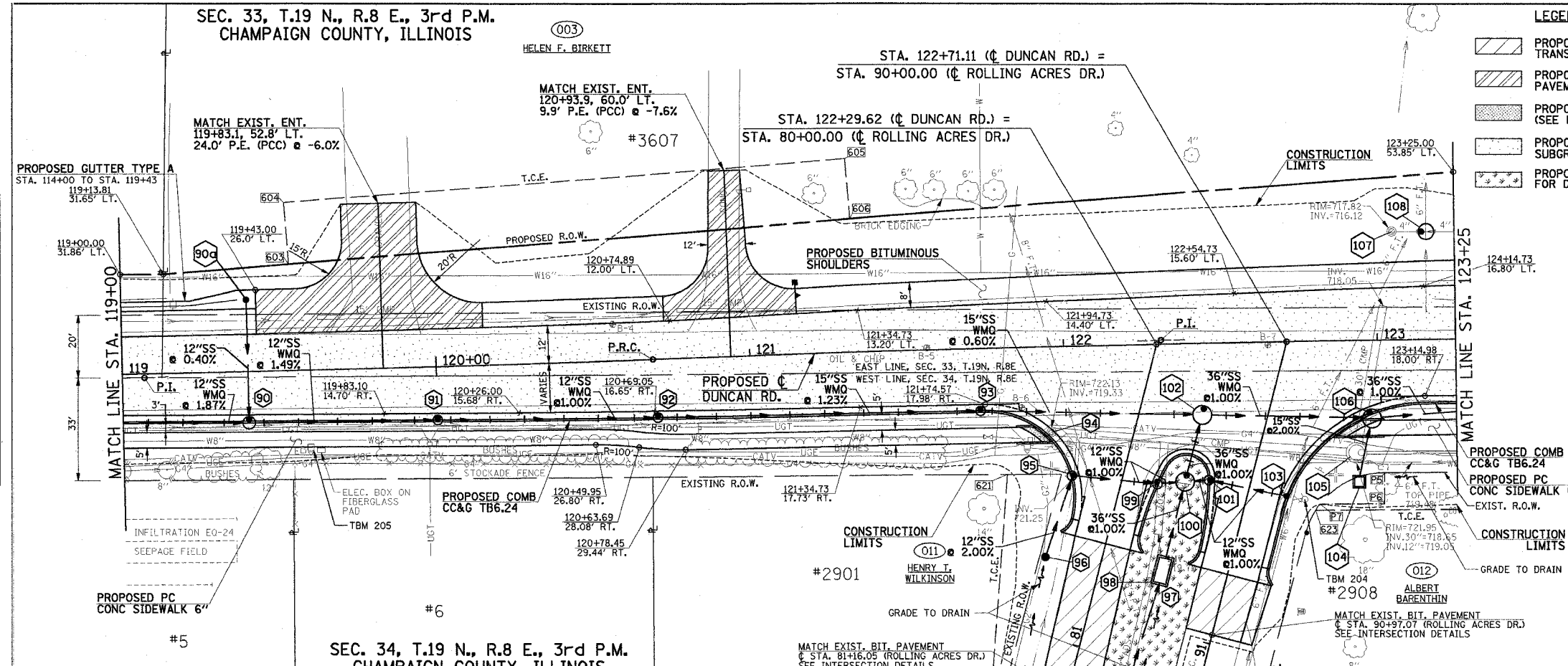
PERMANENT EASEMENT STATIONS AND OFFSETS

POINT	STATION	LOCATION
P5	123+01.61	42.60' RT.
P6	123+01.52	52.70' RT.
P7	122+80.76	52.50' RT.

PROP. CURVE DUNC-2
PI STA. = 122+31.09
 $\Delta = 1^\circ 46' 06''$ (RT)
D = $0^\circ 32' 44''$
R = 10,500.00'
T = 162.04'
L = 324.05'
E = 1.25'
P.R.C. STA = 120+69.05
P.T. STA = 123+93.10
S.E. = NONE

TBM 204 - TOP CAP NUT ON FIRE HYDRANT AT N.E. CORNER OF DUNCAN RD. AND ROLLING ACRES DR. STA. 122+76, 51' RT. ELEV. 724.85

TBM 205 - 6" GEAR HEAD SPIKE, WEST SIDE OF POWER POLE, ON EAST SIDE OF DUNCAN ROAD, SECOND POLE SOUTH FROM ROLLING ACRES DR. 119+60, 25' RT. ELEV. 728.31



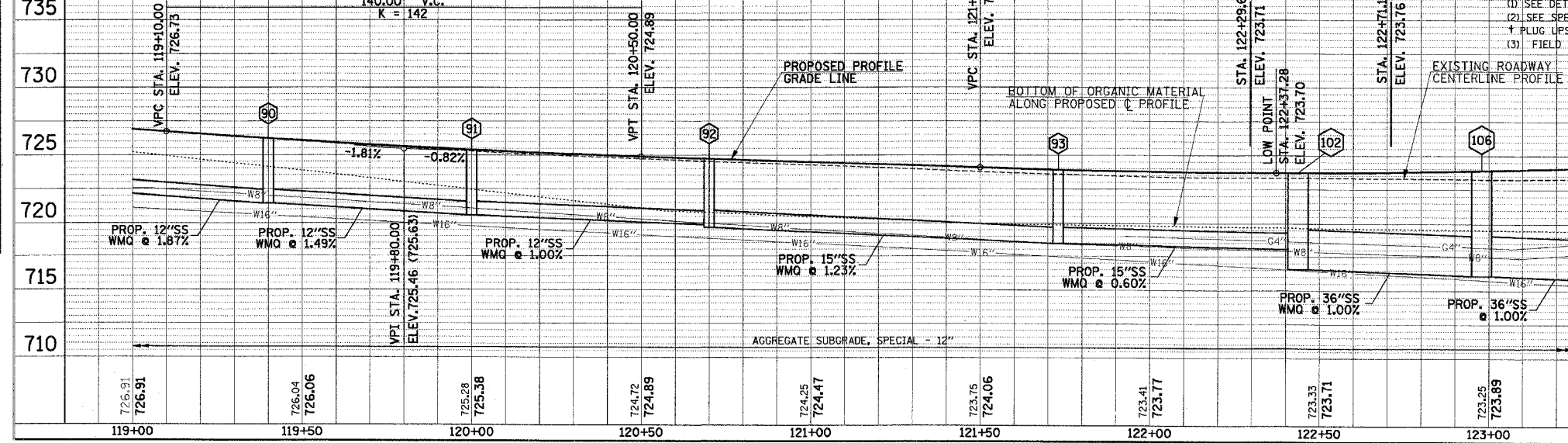
SEC. 34, T.19 N., R.8 E., 3rd P.M.
CHAMPAIGN COUNTY, ILLINOIS

STORM SEWER STRUCTURE SCHEDULE

STR. NO.	STRUCTURE TYPE	OFF-SET SIDE	STA. OF C/L 2 FT. OPENING	OFFSET OF C/L 2 FT. OPENING	STA. OF C/L STR.	OFFSET OF C/L STR.	EX. T/O FRAME/GRATE ELEV.	PR. T/O FRAME/GRATE ELEV.	PR. T/O FLAT SLAB TOP ELEV.	INVERT IN ELEV.	U.S. STR. NO.	INVERT OUT ELEV.	D.S. STR. NO.
90	RD MAN 4 DIA T3V F&G	RT	119+40.00	15.60	119+40.00	16.60	---	725.98	724.98	721.43	89	721.43	91
90a	INLETS TA TIF OL	LT	119+40.00	23.00	119+40.00	23.00	---	725.39	---	---	90a	721.60	90
91	RD INLETS TB T3V F&G	RT	120+00.00	16.90	120+00.00	17.40	---	725.13	724.13	720.58	90	720.58	92
92	RD INLETS TB T3V F&G	RT	120+70.00	18.48	120+70.00	18.98	---	724.44	723.44	719.88	91	719.88	93
93	RD INLETS TB T3V F&G	RT	121+73.00	19.78	121+73.00	20.28	---	723.60	722.60	718.45	92	718.45	102
94	REMOVE INLET	RT	---	---	121+95.6	27.4	722.13	---	---	719.33	---	---	---
95	RD INLETS TB T3 F&G	RT	80+47.45	15.30	80+47.68	15.73	---	723.24	722.24	719.69	96	719.69	95
96	INLETS TA T8G	RT	---	---	80+75.00	17.50	---	723.09	---	720.19	---	720.19	99
97	(I) INLET BOX SPL NO. 1	LT	---	---	80+70.00	19.70	(I)	---	---	(I)	(I)	(I)	(I)
97a	PIPE CONNECTION	LT	---	---	81+16.0	16.0	---	---	---	---	---	---	---
98	REMOVE INLET	LT	---	---	80+74.6	16.6	722.67	---	---	720.13	---	720.13	---
99	RD INLETS TB T3 F&G	LT	80+43.48	10.88	80+43.57	11.36	---	723.26	722.26	719.45	95	719.45	100

STORM SEWER STRUCTURE SCHEDULE

STR. NO.	STRUCTURE TYPE	OFF-SET SIDE	STA. OF C/L 2 FT. OPENING	OFFSET OF C/L 2 FT. OPENING	STA. OF C/L STR.	OFFSET OF C/L STR.	EX. T/O FRAME/GRATE ELEV.	PR. T/O FRAME/GRATE ELEV.	PR. T/O FLAT SLAB TOP ELEV.	INVERT IN ELEV.	U.S. STR. NO.	INVERT OUT ELEV.	D.S. STR. NO.
100	RD MAN 6 DIA TIF OL	LT	80+38.70	19.70	80+40.70	19.70	---	723.80	722.80	717.65	97	717.65	102
101	RD INLETS TB T3 F&G	RT	90+49.20	12.60	90+49.31	13.07	---	723.28	722.28	719.53	103	719.53	100
102	RD MAN 6 DIA TIF OL	RT	122+44.26	21.00	122+43.73	22.92	---	723.42	722.42	718.05	93	716.58	106
103	INLETS TA T3 F&G	LT	---	---	90+48.17	12.18	---	723.30	---	---	---	719.75	101
104	(2) INLET BOX SPL NO. 2	RT	---	---	122+93.50	45.50	---	722.06	---	---	---	720.06	106
105	REMOVE MANHOLE	RT	---	---	122+92.8	36.0	721.95	---	---	719.05	---	718.65	---
106	RD MAN 6 DIA T3V F&G	RT	122+97.20	23.17	122+97.93	25.02	---	723.56	722.56	716.10	102	716.10	109
107	REMOVE INLET	LT	---	---	123+05.1	34.5	717.82	---	---	719.75	104	---	---
108	RD MAN 5 DIA TIF CL	LT	123+14.6	34.3	123+16.1(3)	34.3 (3)	---	721.80	720.80	714.00(3)	(3)	714.00(3)	(3)



- (1) SEE DETAIL SHEET AND SPECIAL PROVISIONS.
- (2) SEE SPECIAL PROVISIONS, CONSTRUCT PER IDOT HIGHWAY STANDARD 542546.
- (3) FIELD DETERMINE LOCATION, VERIFY ELEVATION, CONNECT UPSTREAM AND DOWNSTREAM TILES TO MANHOLE.

STORM SEWER PIPE SCHEDULE

LOCATION STR. - STR. OR STA., O.S.	CL A 1 12 (FOOT)	CL A 1 15 (FOOT)	CL A 1 36 (FOOT)	SS1 WMO 12 (FOOT)	SS1 WMO 36 (FOOT)	SS2 WMO 12 (FOOT)	SS2 WMO 15 (FOOT)	*REM & RELAY SS 24 (FOOT)	GRADE %	TRENCH BACKFILL (SPECIAL) (CU YD)
90 - 90a	37								0.40	13.2
90 - 91						58			1.49	12.5
91 - 92						68			1.00	14.7
92 - 93							100		1.23	26.1
93 - 102						67			0.60	19.8
96 - 95	25								2.00	0.4
95 - 99				24					1.00	3.0
99 - 100				5					1.00	
97a - 97								57	4.00	
97 - 100									1.00	
100 - 102			23		17				1.00	5.0
103 - 101				23					1.00	2.8
101 - 100				4					1.00	
102 - 106									1.00	36.9
104 - 106	17								2.00	1.7

*SEE SPECIAL PROVISIONS