

SEC. 33, T.19 N., R.8 E., 3rd P.M.
CHAMPAIGN COUNTY, ILLINOIS

PROP. CURVE CHURCH-1
PI STA. = 70+71.15
Δ = 45° 51' 52" (LT)
D = 114° 35' 30"
R = 50.00'
T = 21.15'
L = 40.02'
E = 4.29'
P.C. STA = 70+50.00
P.T. STA = 70+90.02
S.E. = NONE

- LEGEND**
- PROPOSED PCC DRIVEWAY PAVEMENT (SEE DETAIL)
 - PROPOSED AGGREGATE SUBGRADE, SPECIAL
 - REVERSE SIDEWALK SLOPE, -2%
 - PROPOSED SODDING FOR DITCH LINING
 - PLUG UPSTREAM END OF FIELD TILE
 - BACKFLOW PREVENTER

TREE PLANTING EASEMENT STATIONS AND OFFSETS

POINT	STATION	OFFSET
T108	125+57.39	70.00' LT.

F.A.U. RITE	SECTION	COUNTY	TOTAL SHEETS	SHEET NO.
807	00-00374-00-PV	CHAMPAIGN	149	44
STA. 123+25		TO STA. 127+15		
FED. ROAD DIST. NO. 7		ILLINOIS	F.A. PROJECT M-5181(38)	

CONTRACT NO. 91308

SEE SCHEDULE OF QUANTITIES FOR TYPICAL SECTION PAVEMENT PAY ITEMS AND THEIR LOCATIONS.

STORM SEWER STRUCTURE SCHEDULE

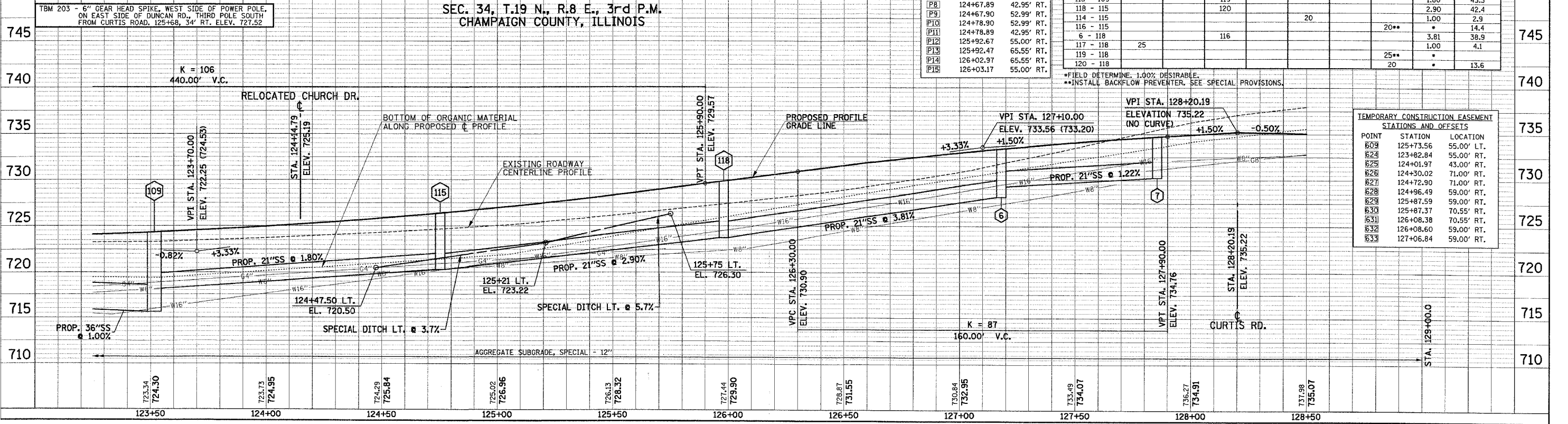
STR. NO.	STRUCTURE TYPE	OFF-SET SIDE	STA. OF C/L 2 FT. OPENING	OFFSET OF C/L 2 FT. OPENING	STA. OF C/L STR.	OFFSET OF C/L STR.	EX. T/O FRAME/GRATE ELEV.	PR. T/O FRAME/GRATE ELEV.	PR. T/O FLAT SLAB TOP ELEV.	INVERT IN ELEV.	U.S. STR. NO.	INVERT OUT ELEV.	D.S. STR. NO.
109	RD MAN 6 DIA T3V F&G	RT	123+51.61	19.80	123+51.61	21.80		724.02	723.02	715.62	106	715.62	110
110	RD MAN 5 DIA T1F CL	LT	123+51.78	52.00	123+53.27	52.00		719.70	718.70	714.25	109	714.25	138
111	*PIPE CONNECTION	LT			123+71*	34*							110
112	*PIPE CONNECTION	RT			123+62*	40*							109
113	INLETS TA T37M G	LT			124+47.50	50.00		720.50				718.50	110
114	INLETS TA T8G	RT			124+73.50	48.00		724.98				722.98	115
115	RD MAN 5 DIA T3V F&G	RT	124+75.17	24.62	124+75.10	26.12		726.00	725.00	720.29	118	720.29	109
116	*PIPE CONNECTION	RT			124+89*	40*							115
117	INLETS TA T37M G	RT			125+98.00	60.50		727.40				725.40	118
118	RD MAN 5 DIA T3V F&G	RT	125+98.00	31.80	125+98.00	33.30		729.46	728.46	723.75	6	723.75	115
118a	REMOVE INLET	RT			125+69.6	31.9	726.51			724.58		724.46	
119	*PIPE CONNECTION	RT			126+12*	50*							118
120	*PIPE CONNECTION	RT			126+14*	39.5*							118

*FIELD VERIFY LOCATION. FIELD DETERMINE ELEVATION. RECONNECT WITH PROPOSED PIPE TO DOWNSTREAM STRUCTURE.

STORM SEWER PIPE SCHEDULE

LOCATION OR STR., O.S.	STORM SEW CL A 1 12 (FOOT)	STORM SEW CL A 1 15 (FOOT)	STORM SEW CL A 2 21 (FOOT)	STORM SEW CL A 2 36 (FOOT)	SS1 WMO 12 (FOOT)	SS1 WMO 36 (FOOT)	PIPE DRAINS 6 (FOOT)	GRADE %	TRENCH BACKFILL (SPECIAL) (CU YD)
106 - 109				48		69		1.00	60.9
109 - 110								2.00	58.5
113 - 110		91						2.30	13.1
111 - 110							25		
112 - 109							20**		14.7
115 - 109			119					1.80	43.3
118 - 115			120					2.90	42.4
114 - 115				20				1.00	2.9
116 - 115							20**		14.4
6 - 118			116					3.81	38.9
117 - 118								1.00	4.1
119 - 118	25						25**		
120 - 118							20		13.6

*FIELD DETERMINE. 1.00% DESIRABLE.
**INSTALL BACKFLOW PREVENTER. SEE SPECIAL PROVISIONS.



PERMANENT EASEMENT STATIONS AND OFFSETS

POINT	STATION	LOCATION
P8	124+67.89	42.95' RT.
P9	124+67.90	52.99' RT.
P10	124+78.90	52.99' RT.
P11	124+78.89	42.95' RT.
P12	125+92.67	55.00' RT.
P13	125+92.47	65.55' RT.
P14	126+02.97	65.55' RT.
P15	126+03.17	55.00' RT.

TEMPORARY CONSTRUCTION EASEMENT STATIONS AND OFFSETS

POINT	STATION	LOCATION
609	125+73.56	55.00' LT.
624	123+82.84	55.00' RT.
625	124+01.97	43.00' RT.
626	124+30.02	71.00' RT.
627	124+72.90	71.00' RT.
628	124+96.49	59.00' RT.
629	125+87.59	59.00' RT.
630	125+87.37	70.55' RT.
631	126+08.38	70.55' RT.
632	126+08.60	59.00' RT.
633	127+06.84	59.00' RT.

DATE: _____ BY: _____
 SURVEYED: _____
 DRAWN: _____
 CHECKED: _____
 APPROVED: _____
 TITLE: _____

DATE: _____ BY: _____
 SURVEYED: _____
 DRAWN: _____
 CHECKED: _____
 APPROVED: _____
 TITLE: _____