

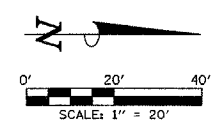
SEC. 28, T.19 N., R.8 E., 3rd P.M.  
CHAMPAIGN COUNTY, ILLINOIS

001  
GLADYS MCGATH

LEGEND

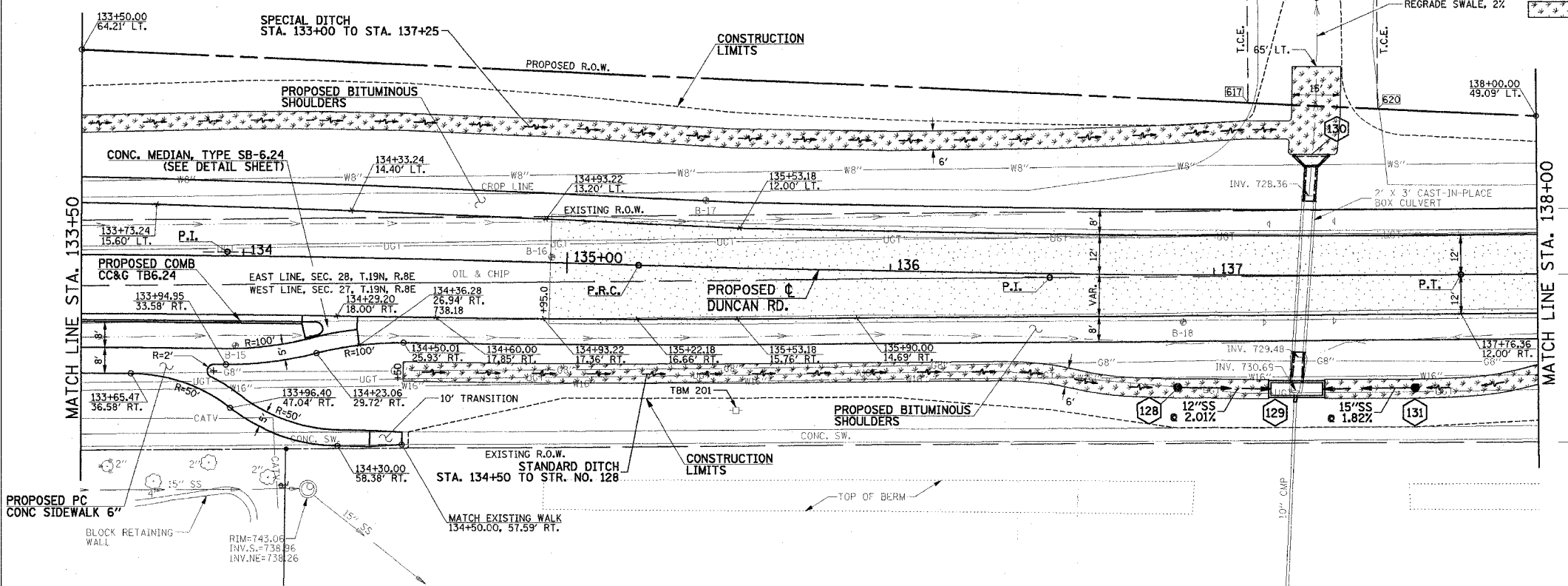
- PROPOSED AGGREGATE SUBGRADE, SPECIAL
- PROPOSED SODDING FOR DITCH LINING

F.A.U. RTE.	SECTION	COUNTY	TOTAL SHEETS	NO.
807	00-00374-00-PV	CHAMPAIGN	149	46
STA. 133+50		TO STA. 138+00		
FED. ROAD DIST. NO. 7		ILLINOIS	F.A. PROJECT M-5181(3B)	
CONTRACT NO. 91308				



SEE SCHEDULE OF QUANTITIES FOR TYPICAL SECTION PAVEMENT PAY ITEMS AND THEIR LOCATIONS.

DATE	BY	REVISION



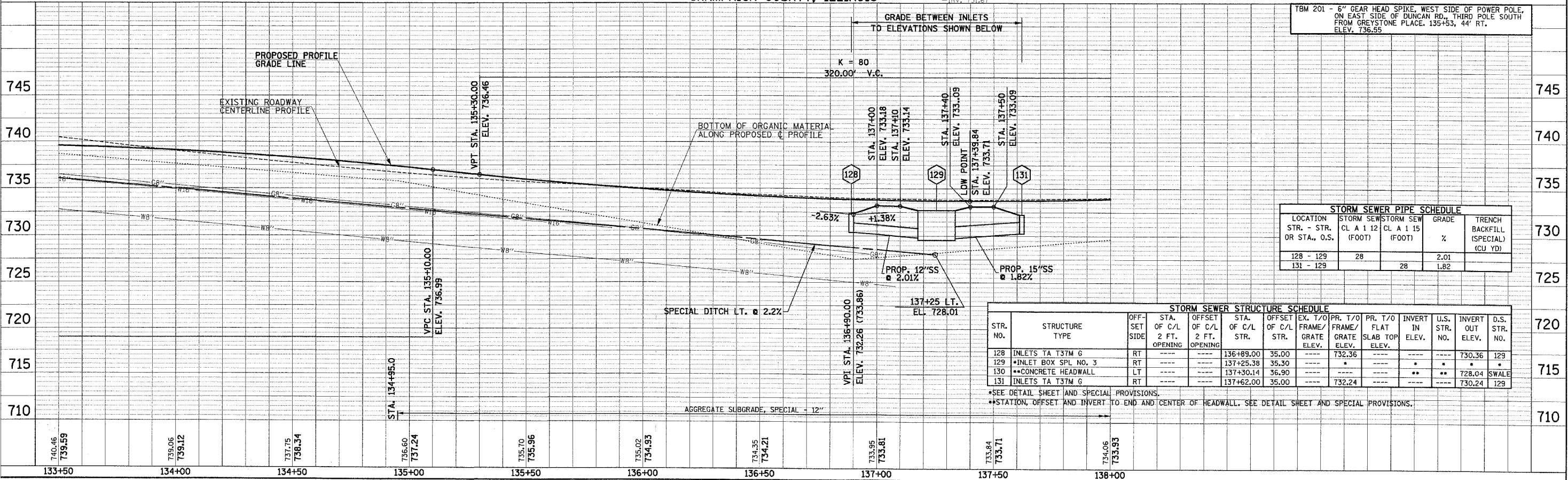
PROP. CURVE DUNC-3  
PI STA. = 133+95.11  
 $\Delta = 2^\circ 15' 16''$  (RT)  
D = 0° 53' 13"  
R = 6,460.00'  
T = 127.11'  
L = 254.18'  
E = 1.25'  
P.C. STA = 132+68.00  
P.R.C. STA = 135+22.18  
S.E. = NONE

PROP. CURVE DUNC-4  
PI STA. = 136+49.29  
 $\Delta = 2^\circ 15' 16''$  (LT)  
D = 0° 53' 13"  
R = 6,460.00'  
T = 127.11'  
L = 254.18'  
E = 1.25'  
P.R.C. STA = 135+22.18  
P.T. STA = 137+76.36  
S.E. = NONE

TEMPORARY CONSTRUCTION EASEMENT STATIONS AND OFFSETS

POINT	STATION	LOCATION
617	137+10.48	53.63' LT.
618	137+10.10	89.66' LT.
619	137+50.67	89.95' LT.
620	137+50.82	51.73' LT.

SEC. 27, T.19 N., R.8 E., 3rd P.M.  
CHAMPAIGN COUNTY, ILLINOIS



STORM SEWER PIPE SCHEDULE

LOCATION STR. - STR. OR STA., O.S.	STORM SEWER CL A 1 12 (FOOT)	STORM SEWER CL A 1 15 (FOOT)	GRADE %	TRENCH BACKFILL (SPECIAL) (CU YD)
128 - 129	28		2.01	
131 - 129		28	1.82	

STORM SEWER STRUCTURE SCHEDULE

STR. NO.	STRUCTURE TYPE	OFF-SET SIDE	STA. OF C/L 2 FT. OPENING	OFFSET OF C/L 2 FT. OPENING	STA. OF C/L STR.	OFFSET OF C/L STR.	EX. T/O FRAME/GRATE ELEV.	PR. T/O FRAME/GRATE ELEV.	PR. T/O FLAT SLAB TOP ELEV.	INVERT IN ELEV.	U.S. STR. NO.	INVERT OUT ELEV.	D.S. STR. NO.
128	INLETS TA T37M 6	RT			136+89.00	35.00		732.36				730.36	129
129	INLET BOX SPL NO. 3	RT			137+25.38	35.30							
130	CONCRETE HEADWALL	LT			137+30.14	36.90						728.04	SWALE
131	INLETS TA T37M 6	RT			137+62.00	35.00		732.24				730.24	129

\*SEE DETAIL SHEET AND SPECIAL PROVISIONS.  
\*STATION, OFFSET AND INVERT TO END AND CENTER OF HEADWALL. SEE DETAIL SHEET AND SPECIAL PROVISIONS.

DATE	BY	REVISION