

SEC. 28, T.19 N., R.8 E., 3rd P.M.
CHAMPAIGN COUNTY, ILLINOIS

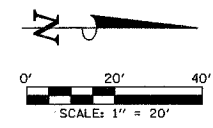
001
GLADYS MCGATH

LEGEND

- PROPOSED BITUMINOUS PAVEMENT TRANSITION - SEE TYPICAL SECTIONS
- PROPOSED AGGREGATE SUBGRADE, SPECIAL
- PROPOSED SODDING FOR DITCH LINING

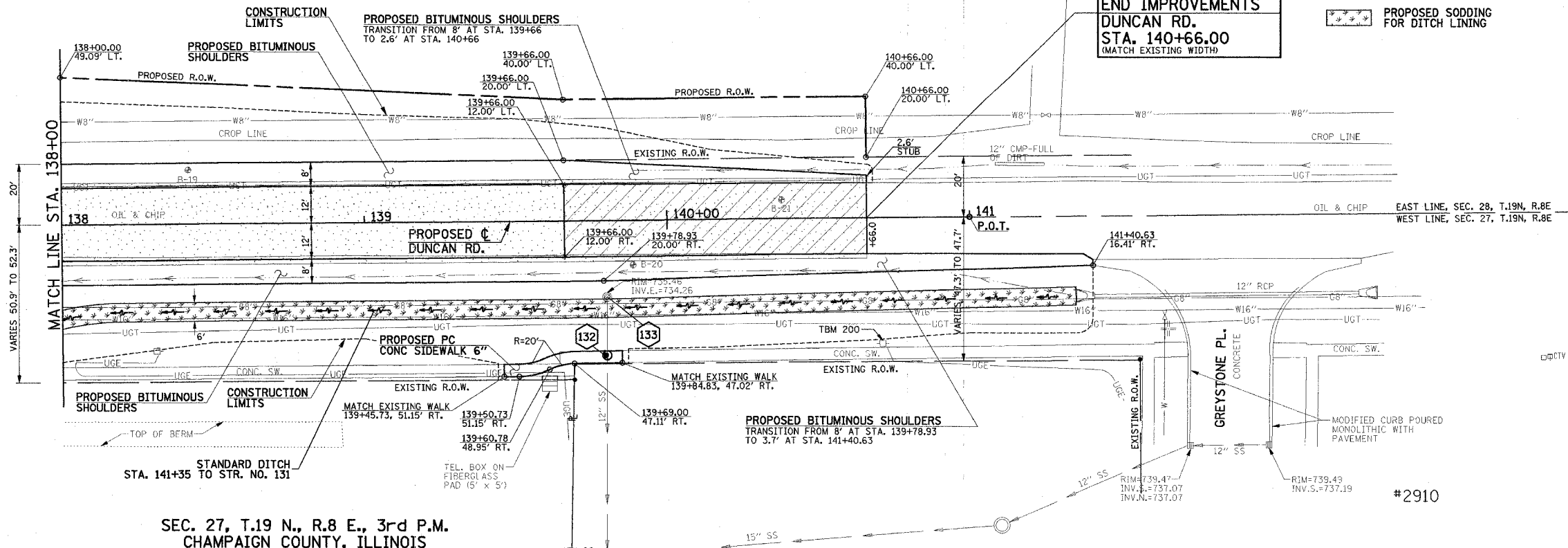
F.A.U. RTE.	SECTION	COUNTY	TOTAL SHEETS	SHEET NO.
807	00-00374-00-PV	CHAMPAIGN	149	47
STA. 138+00 TO STA. 140+66				
FED. ROAD DIST. NO. 7 ILLINOIS		F.A. PROJECT M-518(138)		

CONTRACT NO. 91308

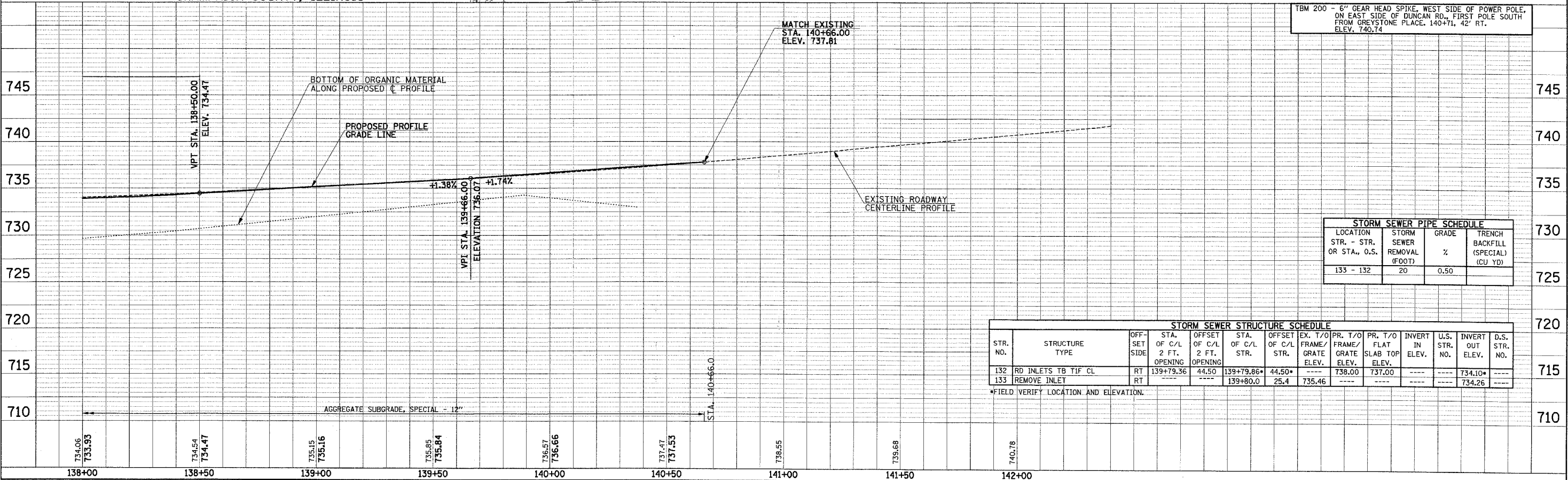


SEE SCHEDULE OF QUANTITIES FOR TYPICAL SECTION PAVEMENT PAY ITEMS AND THEIR LOCATIONS.

DATE	
BY	
PLAN	
REVISED	
NOTE BOOK	
NO.	



SEC. 27, T.19 N., R.8 E., 3rd P.M.
CHAMPAIGN COUNTY, ILLINOIS



TBM 200 - 6" GEAR HEAD SPIKE, WEST SIDE OF POWER POLE, ON EAST SIDE OF DUNCAN RD., FIRST POLE SOUTH FROM GREYSTONE PLACE. 140+71, 42' RT. ELEV. 740.74

LOCATION STR. - STR. OR STA., O.S.	STORM SEWER REMOVAL (FOOT)	GRADE %	TRENCH BACKFILL (SPECIAL) (CU YD)
133 - 132	20	0.50	

STR. NO.	STRUCTURE TYPE	OFF-SET SIDE	STA. OF C/L 2 FT. OPENING	OFFSET OF C/L 2 FT. OPENING	STA. OF C/L STR.	OFFSET OF C/L STR.	EX. T/O FRAME/GRATE	PR. T/O FRAME/GRATE	PR. T/O FLAT SLAB TOP ELEV.	INVERT IN ELEV.	U.S. STR. NO.	INVERT OUT ELEV.	D.S. STR. NO.
132	RD INLETS TB TIF CL	RT	139+79.36	44.50	139+79.86*	44.50*	---	738.00	737.00	---	---	734.10*	---
133	REMOVE INLET	RT	---	---	139+80.0	25.4	735.46	---	---	---	---	734.26	---

*FIELD VERIFY LOCATION AND ELEVATION.

DATE	
BY	
PROFILE	
REVISED	
NOTE BOOK	
NO.	