

TRAFFIC CONTROL GENERAL NOTES

- TRAFFIC CONTROL AND PROTECTION AS DETAILED HEREIN WILL BE PAID FOR AT THE CONTRACT LUMP SUM PRICE FOR "TRAFFIC CONTROL COMPLETE".
- TRAFFIC CONTROL SHALL BE IN ACCORDANCE WITH THE APPLICABLE ARTICLES OF THE STANDARD SPECIFICATIONS, THE APPLICABLE GUIDELINES CONTAINED IN THE "MANUAL ON UNIFORM TRAFFIC CONTROL DEVICES FOR STREETS AND HIGHWAYS", THE SPECIAL PROVISIONS, THESE PLANS AND HIGHWAY STANDARDS 701301, 701311, 701501, 701602, 701801, 702001, BLR 21-6 AND BLR 22-4.
- FLASHERS SHALL BE PLACED ON ALL TYPE III BARRICADES.
- THE CONTRACTOR SHALL NOTIFY THE CITY OF CHAMPAIGN OF ALL ROAD CLOSURES A MINIMUM OF 48 HOURS IN ADVANCE.
- CHANGEABLE MESSAGE SIGNS SHALL BE INSTALLED AND OPERATIONAL FIVE DAYS PRIOR TO THE START OF ROAD CONSTRUCTION. THE CONTRACTOR SHALL INSPECT THE MESSAGE SIGNS BY 8:00 A.M. EACH DAY TO ENSURE THAT THE SIGNS ARE FULLY OPERATIONAL AND IN PROPER WORKING ORDER. THE SIGNS SHALL BE REMOVED FIVE DAYS AFTER THE START OF CONSTRUCTION. PAYMENT FOR CHANGEABLE MESSAGE SIGNS AND DAILY INSPECTION OF THE SIGNS SHALL BE INCLUDED IN THE COST OF "CHANGEABLE MESSAGE SIGN" WITH NO ADDITIONAL COMPENSATION ALLOWED.
- DETOUR ROUTE SIGNS SHALL BE INSTALLED THREE DAYS PRIOR TO ROAD CLOSURE AND SHALL BE MAINTAINED FOR THE DURATION OF THE CLOSURE.
- AT LEAST TWO ENTRANCE/EXIT POINTS SHALL BE MAINTAINED TO BOTH THE ROLLING ACRES SUBDIVISION AND THE CHERRY HILLS SUBDIVISION AT ALL TIMES.
- THE CONTRACTOR SHALL MAINTAIN ACCESS TO THE CHURCH OF JOY & THE CHURCH OF GOD AT ALL TIMES.
- THE CONTRACTOR SHALL MAINTAIN ACCESS TO ANY PRIVATE ENTRANCES WITHIN THE PROJECT LIMITS. ACCESS SHALL BE MAINTAINED BY CONSTRUCTING TEMPORARY ACCESS ROADS, CONSTRUCTING PAVEMENTS IN HALF WIDTHS, CONSTRUCTING ENTRANCES IN HALF WIDTHS, OR OTHER MEANS APPROVED BY THE ENGINEER. A QUANTITY OF "AGGREGATE FOR TEMPORARY ACCESS" HAS BEEN INCLUDED IN THE CONTRACT FOR ENTRANCE ACCESS.
- BARRICADES AND ROAD CLOSURES SHALL REMAIN IN PLACE UNTIL ALL SECTIONS OF THE ROADWAY ARE SUBSTANTIALLY COMPLETE. TRAFFIC CONTROL DEVICES SHALL THEN BE REMOVED AS DIRECTED BY THE ENGINEER.
- PROPER DRAINAGE SHALL BE MAINTAINED AT ALL TIMES WITHIN THE PROJECT LIMITS.
- TRAFFIC CONTROL SURVEILLANCE WILL NOT BE PAID FOR SEPARATELY FOR THIS PROJECT. THE CONTRACTOR SHALL BE RESPONSIBLE FOR INSPECTING AND MAINTAINING ALL TRAFFIC CONTROL DEVICES AT ALL TIMES INCLUDING NIGHTTIME, WEEKENDS, WINTER SHUT-DOWN PERIOD AND ANY TIME WORKERS ARE NOT PRESENT. THIS WORK SHALL BE PERFORMED IN ACCORDANCE WITH RECURRING SPECIAL PROVISIONS LRS3. THE COST OF ALL LABOR AND MATERIALS FOR THE SURVEILLANCE AND MAINTENANCE OF TRAFFIC CONTROL DEVICES SHALL BE INCLUDED IN THE COST OF "TRAFFIC CONTROL COMPLETE".

TRAFFIC CONTROL STANDARDS

THE FOLLOWING TRAFFIC CONTROL STANDARDS ARE THE MINIMUM REQUIREMENTS FOR THE TRAFFIC CONTROL FOR THIS PROJECT.

STANDARD	APPLICATION
701301	SHORT TIME LANE CLOSURE ON 2-LANE CURTIS RD. OR DUNCAN RD. FOR CONSTRUCTION LAYOUT, DEBRIS CLEANUP, ETC.
701311	MOVING LANE CLOSURE ON 2-LANE CURTIS RD. OR DUNCAN RD. FOR LANDSCAPING WORK, PAVEMENT MARKING, DEBRIS CLEANUP, ETC.
701501	LANE CLOSURE ON 2-LANE CURTIS RD. OR DUNCAN RD. FOR CONSTRUCTION ACTIVITIES.
701602	LANE CLOSURE ON MULTILANE CURTIS RD. FOR CONSTRUCTION ACTIVITIES.
WHEN CONSTRUCTION ACTIVITIES ARE PERFORMED UNDER ROAD CLOSURE USE:	
BLR 21-6	ROAD CLOSURE (CLOSED TO ALL TRAFFIC)
BLR 22-4	ROAD CLOSURE (CLOSED TO THRU TRAFFIC)
FOR BOTH CONDITIONS USE:	
701801	SIDEWALK CLOSURES WITHIN PROJECT LIMITS
702001	TRAFFIC CONTROL DEVICES

LEGEND

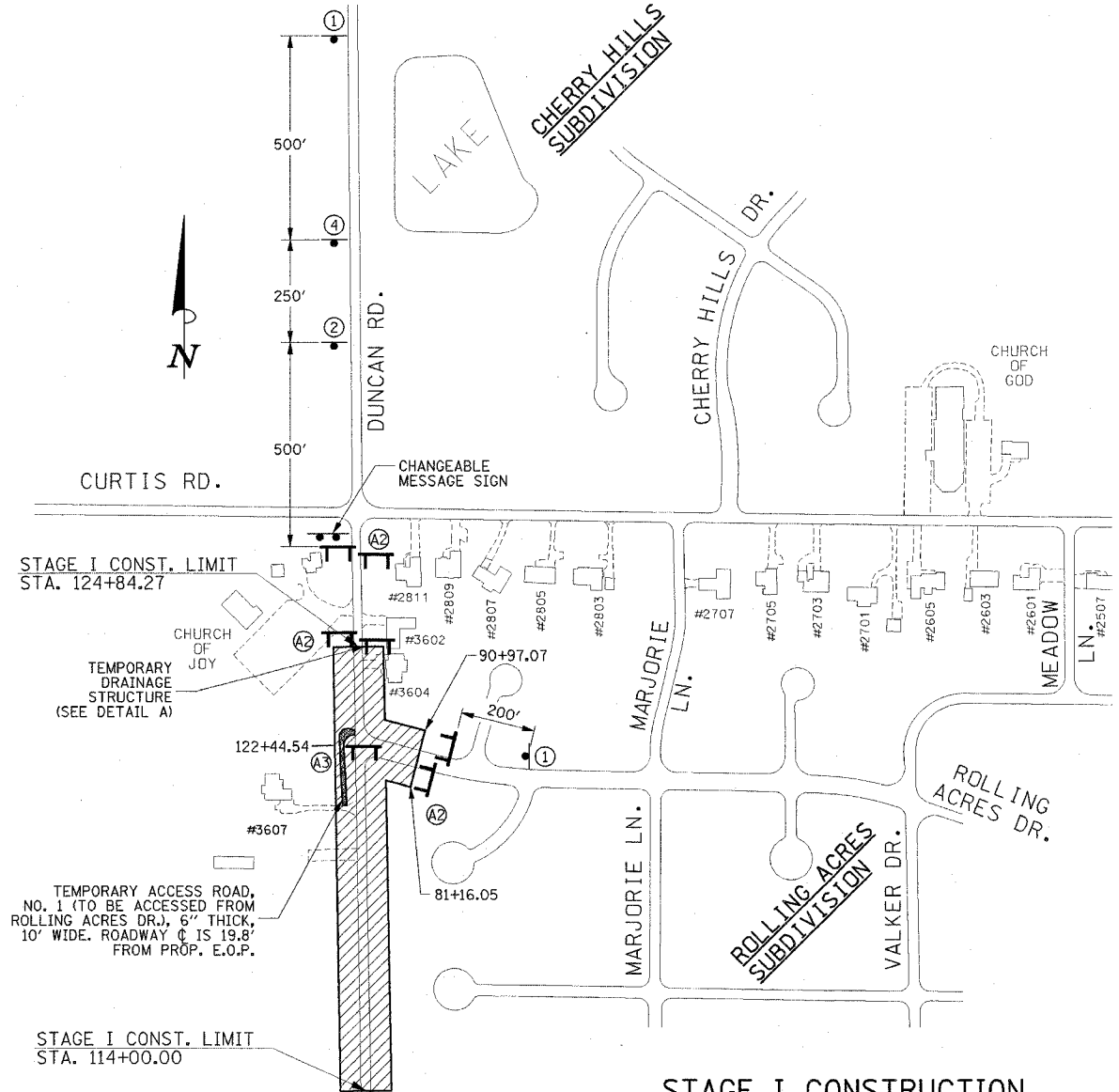
- CONSTRUCTION ZONE
- TYPE III BARRICADES WITH TWO (2) TYPE A FLASHING LIGHTS PER BARRICADE AND SIGNED "ROAD CLOSED" (R-11-2) PER STANDARD 702001
- STAGGERED FOR LOCAL ACCESS. TYPE III BARRICADES WITH TWO (2) TYPE A FLASHING LIGHTS PER BARRICADE AND SIGNED WITH "ROAD CLOSED TO THRU TRAFFIC" PER STANDARD 702001.
- SAME AS (A) EXCEPT PLACEMENT OF BARRICADES SHALL BE AT LOCATIONS DETERMINED BY ENGINEER TO LIMIT ACCESS OF LOCAL TRAFFIC TO CONSTRUCTION ZONE.
- SAME AS (A) EXCEPT BARRICADES SHALL REMAIN UNTIL IDOT ROADWAY SECTION IS OPEN TO TRAFFIC OR THIS PROJECT IS COMPLETE WHICHEVER OCCURS FIRST. TEMPORARY ACCESS ALLOWED PER DIRECTION OF ENGINEER.
- SIGN ON PERMANENT SUPPORT
- NOTE: 48" x 48" SIGNS MAY BE SUBSTITUTED FOR 36" x 36" SIGNS.
- CHANGEABLE MESSAGE SIGN

AGGREGATE FOR TEMPORARY ACCESS ITEM NO. Z0000990

LOCATION	TON
STAGE 1 - DUNCAN ROAD	
DRAINAGE SYSTEM CROSSINGS	41
TEMPORARY ACCESS ROAD NO. 1	193
PRIVATE ENTRANCES	38
INTERIOR SUB-STAGE RAMPS	8
STAGE 1 SUBTOTAL	280
STAGE 2 - DUNCAN ROAD & CURTIS ROAD	
WEST END ACCESS RAMP	122
DRAINAGE SYSTEM CROSSINGS	78
TEMPORARY ACCESS ROAD NO. 2	260
TEMPORARY ACCESS ROAD NO. 3	244
PRIVATE ENTRANCES	190
INTERIOR SUB-STAGE RAMPS	23
STAGE 2 SUBTOTAL	917
STAGE 3 - CURTIS ROAD	
DRAINAGE SYSTEM CROSSINGS	46
TEMPORARY ACCESS ROAD NO. 4	89
TEMPORARY ACCESS ROAD NO. 5	295
PRIVATE ENTRANCES	95
INTERIOR SUB-STAGE RAMPS	15
STAGE 3 SUBTOTAL	540
TOTAL	1737

STAGING NOTES

- THE STAGING SHOWN IS THE SUGGESTED CONSTRUCTION STAGING FOR THIS PROJECT.
- THE PURPOSE OF THIS STAGING IS TO MINIMIZE DELAYS TO MOTORISTS, PROVIDE CONVENIENT ACCESS TO ADJACENT PROPERTIES AND HONOR THE REQUIRED NUMBER OF ACCESS POINTS TO THE CHERRY HILLS AND ROLLING ACRES SUBDIVISIONS.
- THE CONTRACTOR MAY ALTER THE SEQUENCE OF CONSTRUCTION WITH THE PRIOR APPROVAL OF THE ENGINEER.
- FINAL PAVEMENT MARKING AND LANDSCAPING SHALL BE PERFORMED AT THE COMPLETION OF EACH STAGE AND PRIOR TO OPENING THE ROADWAY TO TRAFFIC. THE CONTRACTOR MAY COMPLETE THE FINAL PAVEMENT MARKING AND LANDSCAPING AFTER THE COMPLETION OF THE ENTIRE PROJECT BY PERFORMING THE WORK UNDER TRAFFIC USING THE APPROPRIATE TRAFFIC CONTROL HIGHWAY STANDARDS. UNDER THIS OPTION THE CONTRACTOR WILL BE REQUIRED TO PROVIDE TEMPORARY PAVEMENT MARKING IN ACCORDANCE WITH THE STANDARD SPECIFICATIONS UNTIL THE FINAL PAVEMENT MARKING IS INSTALLED. THE COST OF INSTALLATION AND REMOVAL OF ANY TEMPORARY PAVEMENT MARKING WILL BE BORNE BY THE CONTRACTOR AND NO ADDITIONAL COMPENSATION WILL BE ALLOWED.

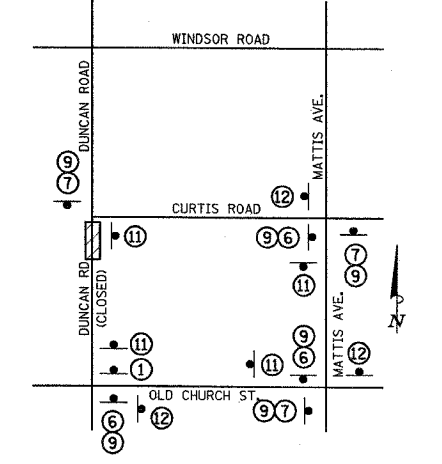
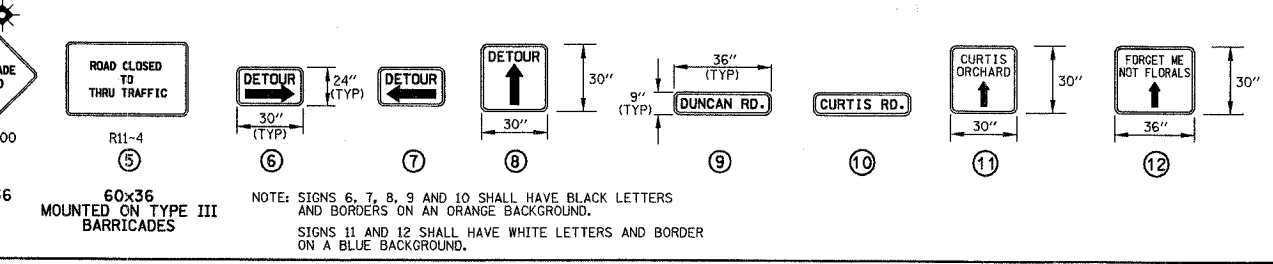
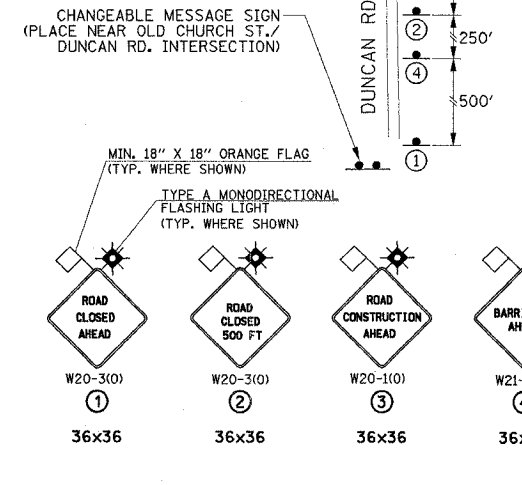


STAGE I CONSTRUCTION WORK ZONE TRAFFIC CONTROL

SCALE: 1"=200'

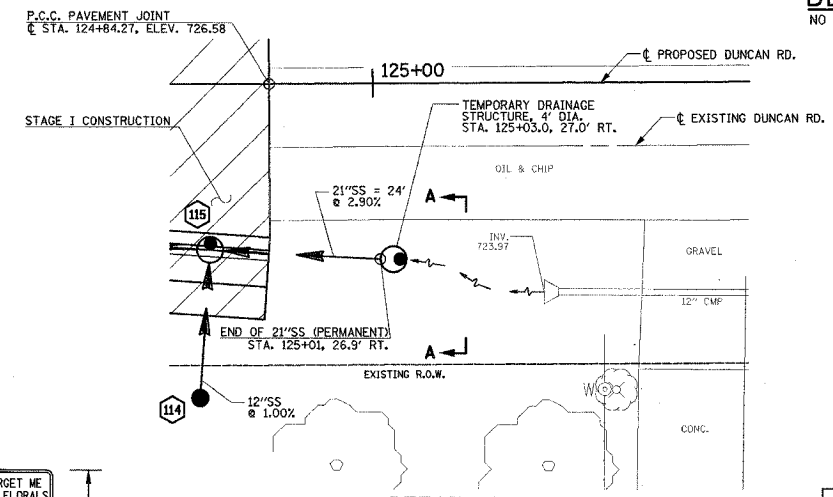
SEQUENCE OF CONSTRUCTION - STAGE I

- STAGE I: (DUNCAN RD. STA. 114+00.00 TO 124+84.27)
- INSTALL DETOUR SIGNING AND BARRICADE PLACEMENT IN ACCORDANCE WITH DETAILS SHOWN ON THIS SHEET.
 - LOCAL TRAFFIC ALONG THE SOUTH LEG DUNCAN RD. SHALL USE EXISTING PAVEMENT AND/OR ACCESS AS DETAILED IN THE TRAFFIC CONTROL GENERAL NOTES AND AS SHOWN ON THIS SHEET.
 - PERFORM STORM DRAINAGE CONSTRUCTION FROM STA. 114+00 TO 125+01. OUTFALL STORM SEWER SYSTEM (SEE PLAN AND PROFILE SHEETS), AND CONSTRUCT TEMPORARY DRAINAGE STRUCTURE IN ACCORDANCE WITH DETAILS SHOWN ON THIS SHEET.
 - CONSTRUCT PROJECT IMPROVEMENTS FROM STA. 114+00.00 TO 122+44.54 TO LIMIT CONSTRUCTION INTERFERENCE TO LOCAL PROPERTIES.
 - REMOVE TEMPORARY ACCESS ROAD, ADJUST INTERIOR BARRICADES AND CONSTRUCT ALL REMAINING PROJECT IMPROVEMENTS FROM STA. 122+44.54 TO 124+84.27.



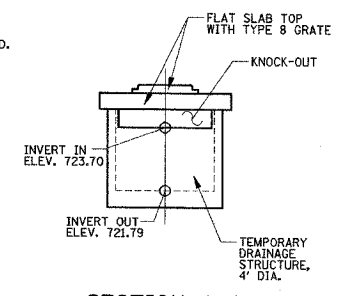
STAGE I CONSTRUCTION DETOUR SIGN LOCATIONS

NO SCALE



DETAIL A TEMPORARY DRAINAGE STRUCTURE (PLAN)

THE TEMPORARY DRAINAGE STRUCTURE SHALL BE FURNISHED, INSTALLED AND REMOVED IN ACCORDANCE WITH THE APPLICABLE PORTIONS OF SECTION 602 OF THE STANDARD SPECIFICATIONS, THE APPLICABLE HIGHWAY STANDARDS AND THE SPECIAL PROVISIONS. THIS WORK WILL BE PAID FOR AT THE CONTRACT UNIT PRICE PER EACH FOR "DRAINAGE STRUCTURES-STAGE CONSTRUCTION".



SECTION A-A TEMPORARY DRAINAGE STRUCTURE (ELEVATION)

NO SCALE

ILLINOIS DEPARTMENT OF TRANSPORTATION
STAGE CONSTRUCTION AND MAINTENANCE OF TRAFFIC PLAN
 DATE: 8-05
 DRAWN BY: S.M.W.
 CHECKED BY: R.L.H.
 SCALE: NO SCALE