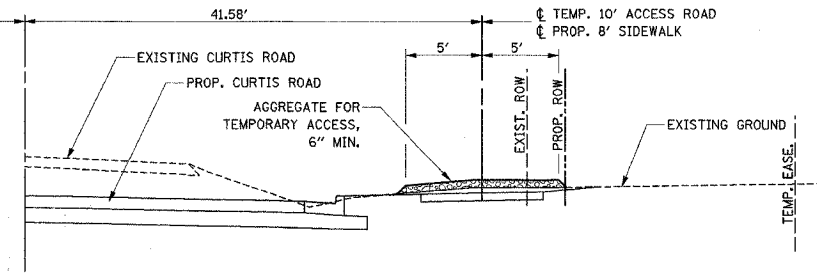
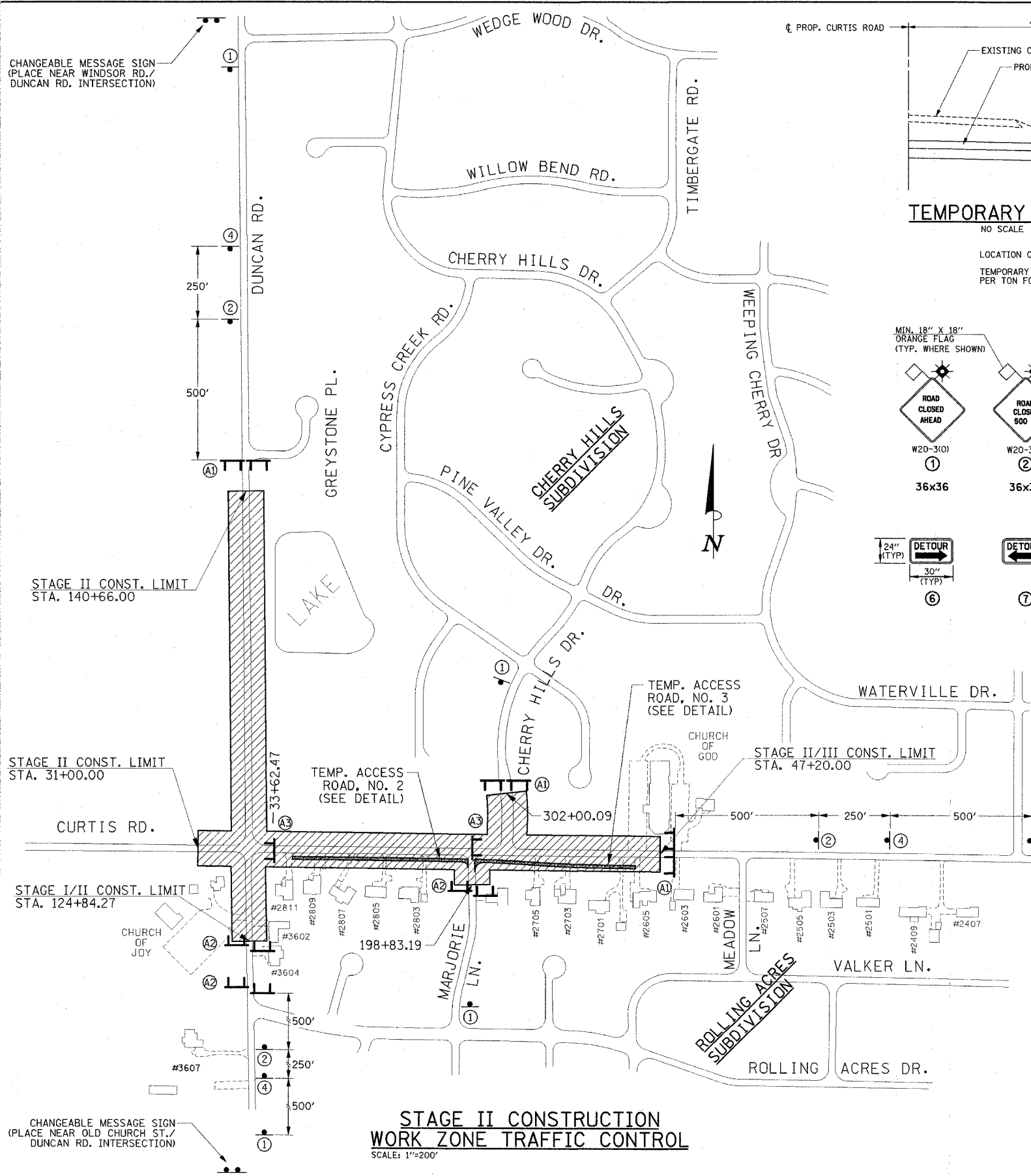


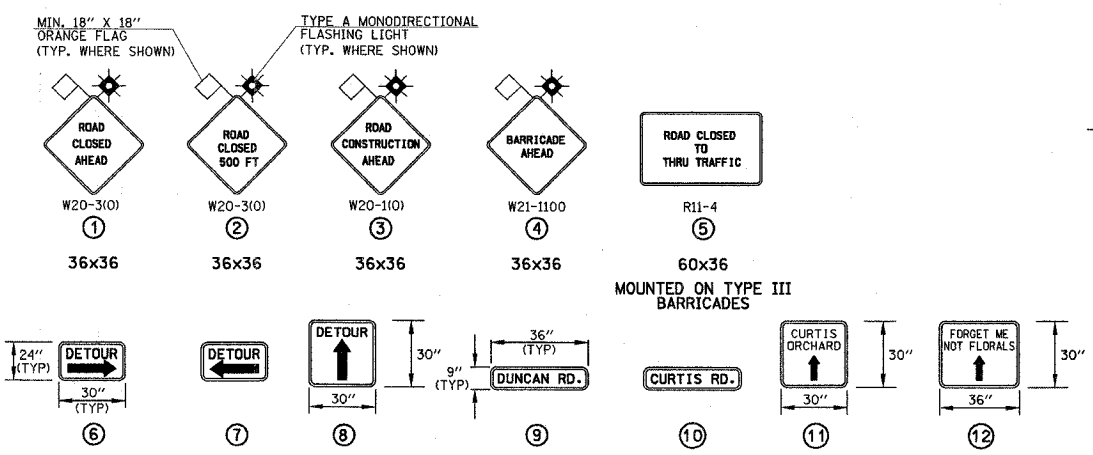
F.A.U. DIST.	SECTION	COUNTY	TOTAL SHEETS	SHEET NO.
807	00-00374-00-PV	CHAMPAIGN	149	52
STA.	TO STA.			
FED. ROAD DIST. NO. 7	ILLINOIS	F.A. PROJECT M-518(38)		

CONTRACT NO. 91308



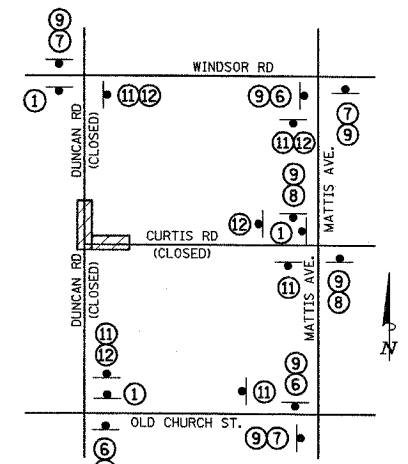
**TEMPORARY ACCESS ROAD NO. 2,3,4&5 DETAIL**  
NO SCALE (TO BE ACCESSED FROM MARJORIE LN. AND MEADOW LN.)

LOCATION OF TEMPORARY ACCESS ROAD NO. 1 TO BE DETERMINED BY THE ENGINEER.  
TEMPORARY ACCESS ROAD SHALL BE PAID FOR AT THE CONTRACT UNIT PRICE PER TON FOR "AGGREGATE FOR TEMPORARY ACCESS". SEE SPECIAL PROVISIONS.



**WORK ZONE SIGNS**  
NO SCALE

- LEGEND**
- CONSTRUCTION ZONE
  - (A1) TYPE III BARRICADES WITH TWO (2) TYPE A FLASHING LIGHTS PER BARRICADE AND SIGNED "ROAD CLOSED" (R-11-2) PER STANDARD 702001
  - (A2) STAGGERED FOR LOCAL ACCESS. TYPE III BARRICADES WITH TWO (2) TYPE A FLASHING LIGHTS PER BARRICADE AND SIGNED WITH (B) "ROAD CLOSED TO THRU TRAFFIC" PER STANDARD 702001.
  - (A3) SAME AS (A1) EXCEPT PLACEMENT OF BARRICADES SHALL BE AT LOCATIONS DETERMINED BY ENGINEER TO LIMIT ACCESS OF LOCAL TRAFFIC TO CONSTRUCTION ZONE.
  - (A4) SAME AS (A1) EXCEPT BARRICADES SHALL REMAIN UNTIL IDOT ROADWAY SECTION IS OPEN TO TRAFFIC OR THIS PROJECT IS COMPLETE WHICHEVER OCCURS FIRST. TEMPORARY ACCESS ALLOWED PER DIRECTION OF ENGINEER.
  - SIGN ON PERMANENT SUPPORT
  - NOTE: 48" x 48" SIGNS MAY BE SUBSTITUTED FOR 36" x 36" SIGNS.
  - CHANGEABLE MESSAGE SIGN



**STAGE II CONSTRUCTION DETOUR SIGN LOCATIONS**  
NO SCALE

**SEQUENCE OF CONSTRUCTION - STAGE II**

1. REMOVE ANY PREVIOUS DETOUR SIGNING AND BARRICADE PLACEMENT THAT MAY CONFLICT WITH CURRENT STAGE CONSTRUCTION.
2. INSTALL DETOUR SIGNING AND BARRICADE PLACEMENT IN ACCORDANCE WITH DETAILS SHOWN ON THIS SHEET.
3. LOCAL TRAFFIC ALONG DUNCAN RD. & CURTIS RD. SHALL USE EXISTING PAVEMENT AND/OR ACCESS AS DETAILED IN THE TRAFFIC CONTROL GENERAL NOTES AND AS SHOWN ON THIS SHEET.
4. REMOVE TEMPORARY DRAINAGE STRUCTURE CONSTRUCTED IN STAGE I.
5. PERFORM STORM DRAINAGE CONSTRUCTION FROM STA. 125+00 TO 140+66, AND FROM STA. 31+00 TO 47+20.
6. CONSTRUCT ALL REMAINING PROJECT IMPROVEMENTS ON DUNCAN RD. FROM STA. 124+84.27 TO 140+66.00 BY THE INTERIM COMPLETION DATE AND BEFORE CONSTRUCTING THE IMPROVEMENTS ON CURTIS RD. FROM STA. 33+62.47 TO 47+20.00. SEE SPECIAL PROVISIONS FOR INTERIM COMPLETION DATE. THE PURPOSE OF RESTRICTING WORK TO DUNCAN ROAD IS TO LIMIT TRAFFIC INTERFERENCE TO CURTIS ORCHARD ON SOUTH DUNCAN.
7. ADJUST INTERIOR BARRICADES AND CONSTRUCT ALL REMAINING PROJECT IMPROVEMENTS ON CURTIS RD. FROM STA. 33+62.47 TO 47+20.00.

**STAGE II CONSTRUCTION WORK ZONE TRAFFIC CONTROL**  
SCALE: 1"=200'

ILLINOIS DEPARTMENT OF TRANSPORTATION  
**STAGE CONSTRUCTION AND MAINTENANCE OF TRAFFIC PLAN**  
DATE : 8-05  
DRAWN BY : S.M.W.  
CHECKED BY : R.L.H.  
SCALE : NO SCALE