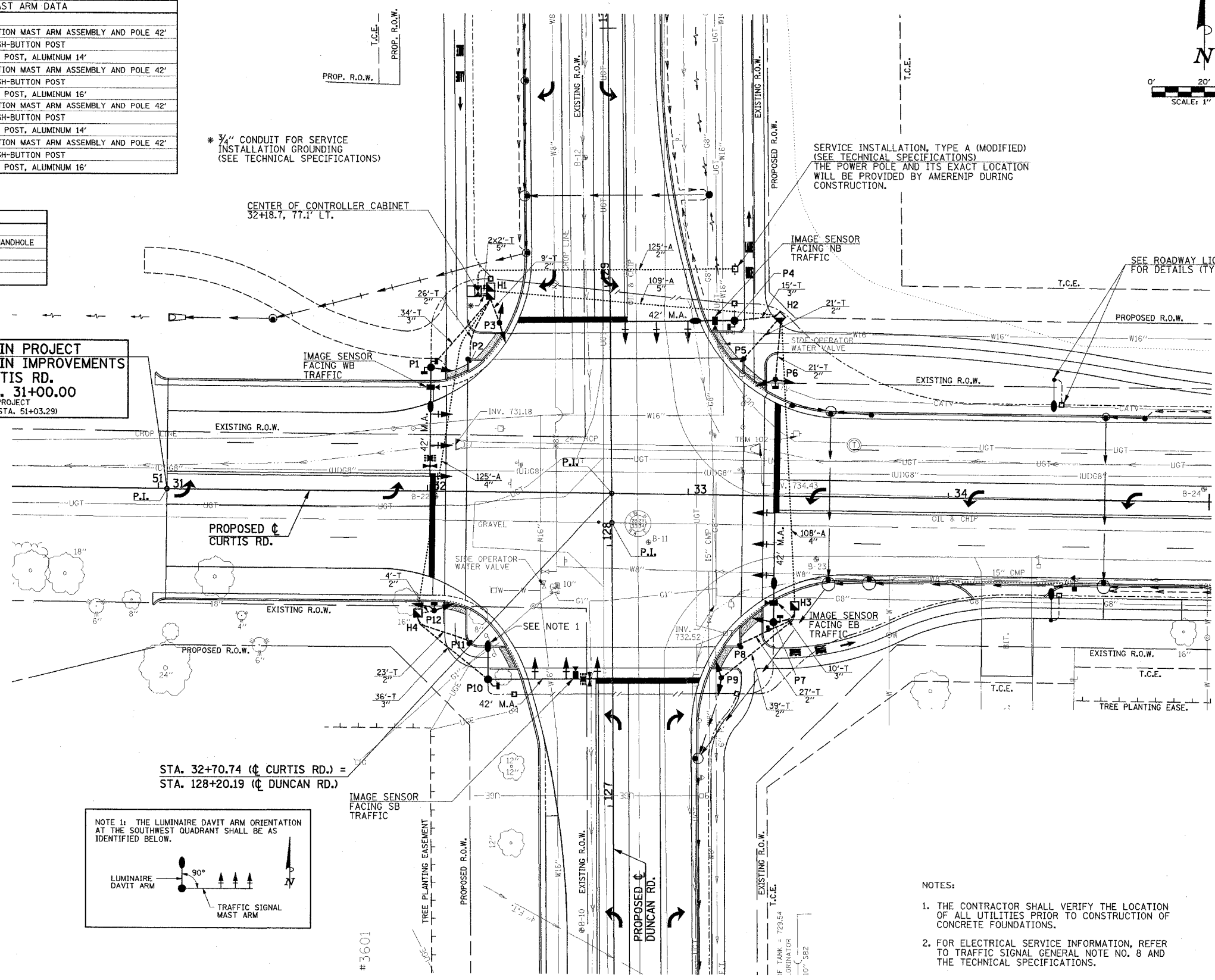


POST AND MAST ARM DATA			
NO.	STATION	OFFSET	DESCRIPTION
P1	32+00.9	47.5' LT	STEEL COMBINATION MAST ARM ASSEMBLY AND POLE 42'
P2	32+15.9	50.0' LT	PEDESTRIAN PUSH-BUTTON POST
P3	32+27.0	65.0' LT	TRAFFIC SIGNAL POST, ALUMINUM 14'
P4	33+17.0	67.1' LT	STEEL COMBINATION MAST ARM ASSEMBLY AND POLE 42'
P5	33+19.8	51.7' LT	PEDESTRIAN PUSH-BUTTON POST
P6	33+33.0	44.9' LT	TRAFFIC SIGNAL POST, ALUMINUM 16'
P7	33+33.5	48.6' RT	STEEL COMBINATION MAST ARM ASSEMBLY AND POLE 42'
P8	33+20.2	57.4' RT	PEDESTRIAN PUSH-BUTTON POST
P9	33+13.8	70.4' RT	TRAFFIC SIGNAL POST, ALUMINUM 14'
P10	32+24.0	72.3' RT	STEEL COMBINATION MAST ARM ASSEMBLY AND POLE 42'
P11	32+17.5	57.7' RT	PEDESTRIAN PUSH-BUTTON POST
P12	32+03.1	46.0' RT	TRAFFIC SIGNAL POST, ALUMINUM 16'

HANDHOLE DATA			
NO.	STATION	OFFSET	DESCRIPTION
H1	32+23.5	77.3' LT	CONC. DOUBLE HANDHOLE
H2	33+34.4	68.6' LT	CONC. HANDHOLE
H3	33+41.5	42.1' RT	CONC. HANDHOLE
H4	31+96.9	47.0' RT	CONC. HANDHOLE

BEGIN PROJECT
BEGIN IMPROVEMENTS
CURTIS RD.
STA. 31+00.00
(END PROJECT
 IDOT STA. 51+03.29)



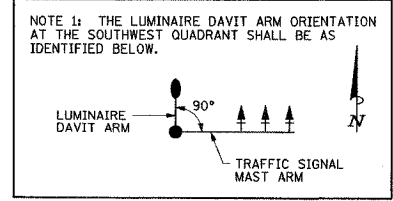
* 3/4" CONDUIT FOR SERVICE INSTALLATION GROUNDING (SEE TECHNICAL SPECIFICATIONS)

SERVICE INSTALLATION, TYPE A (MODIFIED) (SEE TECHNICAL SPECIFICATIONS) THE POWER POLE AND ITS EXACT LOCATION WILL BE PROVIDED BY AMERENIP DURING CONSTRUCTION.

SEE ROADWAY LIGHTING SHEETS FOR DETAILS (TYP.)

TRAFFIC SIGNAL LEGEND

- CONDUIT AUGERED
- CONDUIT IN TRENCH
- MAST ARM ASSEMBLY AND POLE, STEEL
- SIGNAL POST
- ▲ SIGNAL HEAD
- ▶ SIGNAL HEAD WITH BACKPLATE
- ▬ PEDESTRIAN SIGNAL HEAD
- PEDESTRIAN PUSH-BUTTON POST
- ⊙ PEDESTRIAN PUSH-BUTTON
- ⊕ CONFIRMATION BEACON
- ▲ EMERGENCY VEHICLE PREEMPTION DETECTOR
- ▬ WIDE AREA VIDEO DETECTION UNIT
- ▭ CONTROLLER CABINET
- ▣ CONCRETE HANDHOLE
- ▣ CONCRETE DOUBLE HANDHOLE
- ⊕ SERVICE INSTALLATION
- LUMINAIRE AND MAST ARM
- PROPOSED LIGHTING STANDARD (SEE ROADWAY LIGHTING PLANS)
- HANDHOLE (SPECIAL)



- NOTES:
1. THE CONTRACTOR SHALL VERIFY THE LOCATION OF ALL UTILITIES PRIOR TO CONSTRUCTION OF CONCRETE FOUNDATIONS.
 2. FOR ELECTRICAL SERVICE INFORMATION, REFER TO TRAFFIC SIGNAL GENERAL NOTE NO. 8 AND THE TECHNICAL SPECIFICATIONS.

ILLINOIS DEPARTMENT OF TRANSPORTATION

TRAFFIC SIGNAL PLANS
 TRAFFIC SIGNAL LAYOUT

DATE : 8-05
 DRAWN BY : S.M.W.
 CHECKED BY : J.T.P.

SCALE : 1"=20'