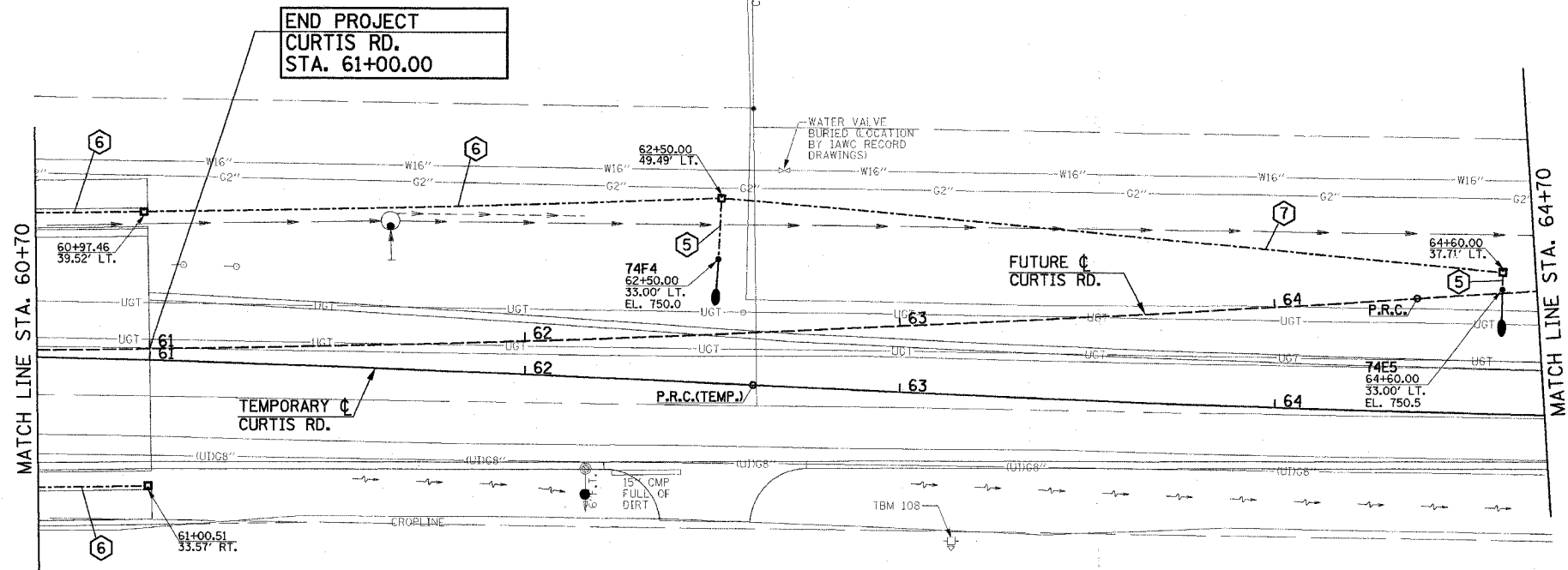
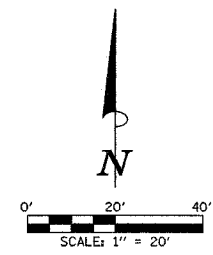


F.A.U. RT.	SECTION	COUNTY	TOTAL SHEETS	SHEET NO.
807	00-00374-00-PV	CHAMPAIGN	149	92
STA. 60+70		TO STA. 68+70		
FED. ROAD DIST. NO. 7		ILLINOIS	F.A. PROJECT M-5181(38)	

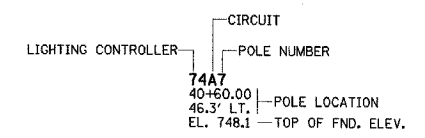
CONTRACT NO. 91308



ROADWAY LIGHTING LEGEND

- PROPOSED TRAFFIC SIGNAL HANDLE. (SEE TRAFFIC SIGNAL PLANS FOR LOCATION)
- ▲ PROPOSED 250W HPS LUMINAIRE, WITH M-C-III DISTRIBUTION, WITH 15' TRUSS ARM MOUNTED ON TRAFFIC SIGNAL MAST ARM POLE. TRUSS ARM ORIENTATION SHALL BE AS INDICATED ON PLANS. TRUSS ARM, POLE, AND POLE FOUNDATION TO BE PROVIDED AND INSTALLED AS PART OF THE TRAFFIC SIGNAL INSTALLATION. COORDINATE LUMINAIRE INSTALLATION WITH POLE AND SIGNAL INSTALLATION.
- ⊥ PROPOSED GROUND ROD
- PROPOSED TRAFFIC SIGNAL CONTROLLER CABINET.
- ⊞ PROPOSED LIGHTING CONTROLLER #74.
- PROPOSED 250W HPS LUMINAIRE, WITH M-C-III DISTRIBUTION, WITH 8' TRUSS ARM MOUNTED ON 40' POLE, WITH AUGERED STEEL FOUNDATION.
- PROPOSED JUNCTION BOX, SPECIAL. ALL JUNCTION BOXES SHALL BE 12"W x 12"L x 12"D UNLESS OTHERWISE NOTED.
- PROPOSED PVC CONDUIT (SCH. 80), AUGERED SEE CONDUIT/CABLE SCHEDULE FOR QUANTITIES
- - - PROPOSED PVC CONDUIT (SCH. 40) IN TRENCH SEE CONDUIT/CABLE SCHEDULE FOR QUANTITIES
- ⊔ RELOCATED UTILITY SERVICE POLE (POLE RELOCATION SHALL BE BY AMEREN IP. CONFIRM EXACT LOCATION IN FIELD). STUB AND CAP SERVICE LATERAL CONDUITS ABOVE GRADE PER AMEREN IP REQUIREMENTS.

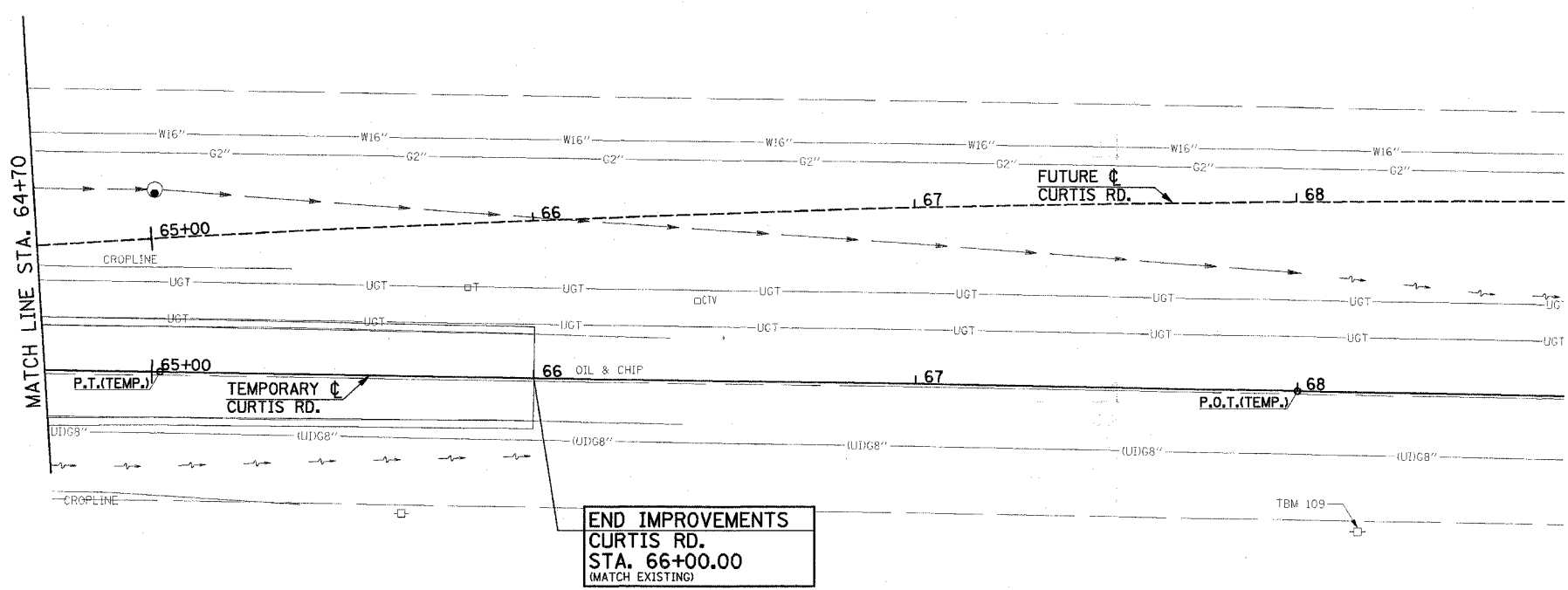
CIRCUIT DESIGNATION SCHEME



NOTE: PROVIDE PERMANENT STICKER ON EACH LIGHT POLE INDICATING THE LIGHTING CONTROLLER, CIRCUIT AND POLE NUMBER.

CONDUIT/CABLE SCHEDULE

- ① (2) 2" PVC CONDUITS, ONE WITH 8-#6, 1-#6 GND. AND ONE WITH 4-#4, 4-#6, 1-#4 GND.
- ② (1) 2" PVC CONDUIT WITH 8-#6, 1-#6 GND.
- ③ (1) 2" PVC CONDUIT WITH 4-#6, 1-#6 GND.
- ④ (1) 2" PVC CONDUIT WITH 2-#6, 1-#6 GND.
- ⑤ (1) 1/4" PVC CONDUIT WITH 2-#10, 1-#10 GND.
- ⑥ (1) 2" PVC CONDUIT WITH 4-#4, 1-#4 GND.
- ⑦ (1) 2" PVC CONDUIT WITH 2-#4, 1-#4 GND.



ILLINOIS DEPARTMENT OF TRANSPORTATION
ROADWAY LIGHTING PLAN

DATE : 8-05
DRAWN BY : S.M.W.
CHECKED BY : J.J.F.

SCALE : 1"=20'