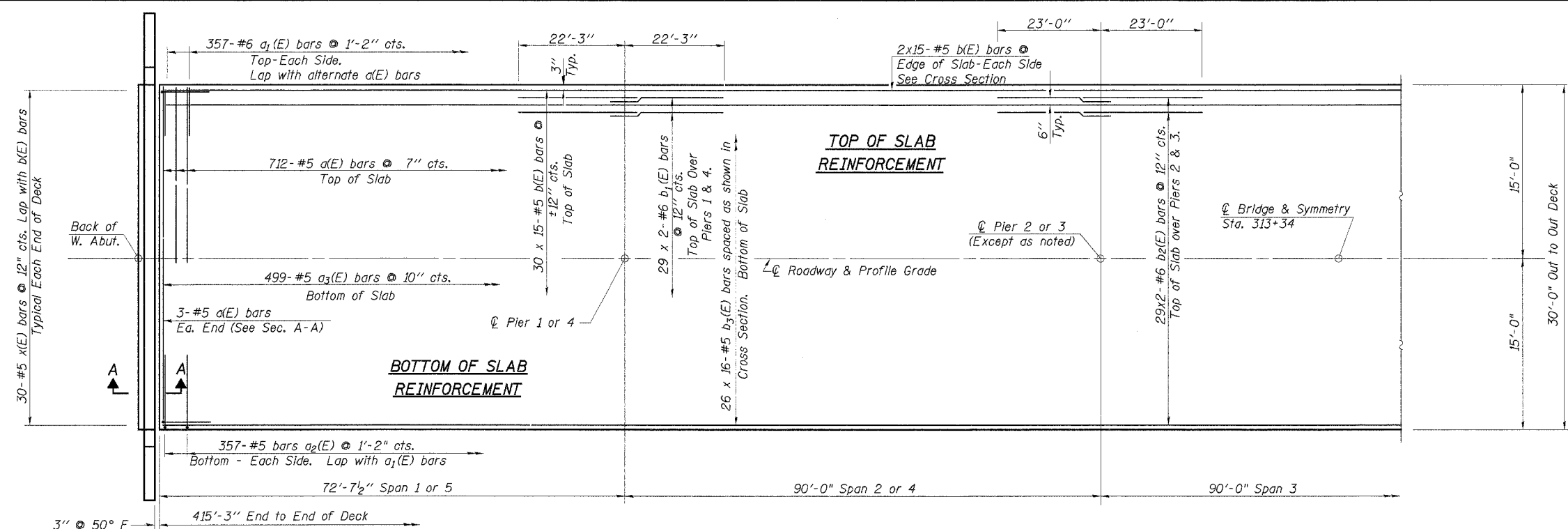
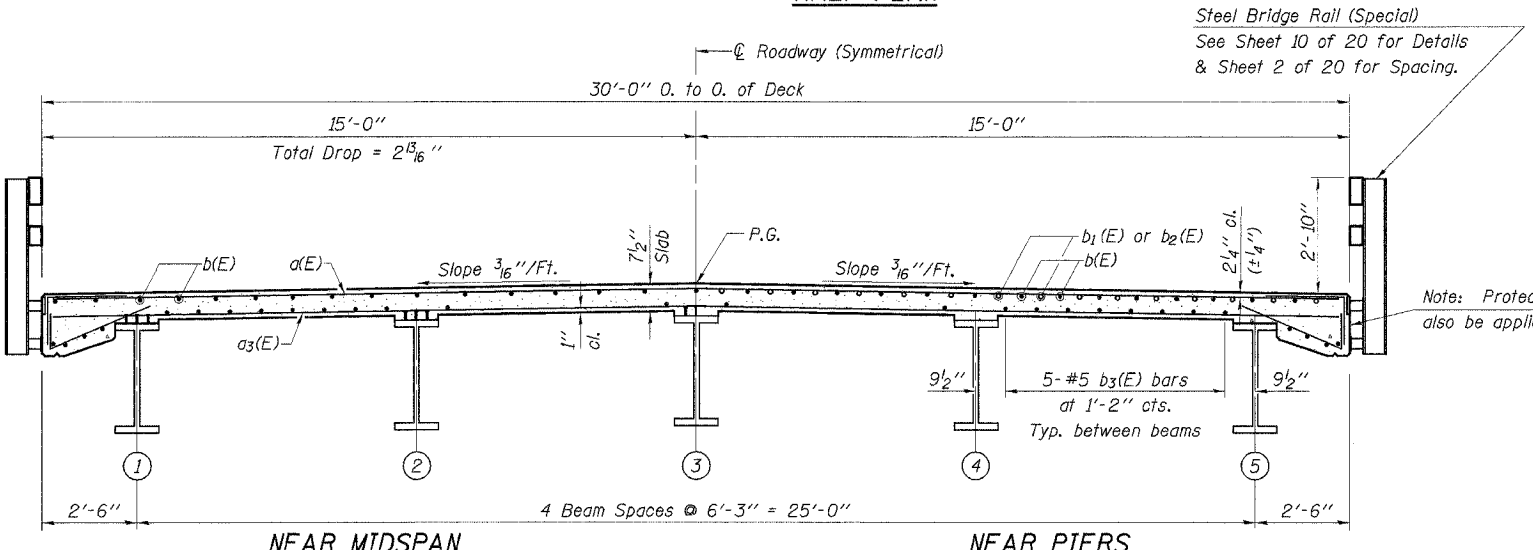


ROUTE NO.	SECTION	COUNTY	TOTAL SHEETS	SHEET NO.
FAS 429	94-00087	HANCOCK	43	14
C.H. 23	-00-BR			
ROAD DIST.	ILLINOIS			

Contract No. 93401
Sheet 8 of 20



HALF PLAN

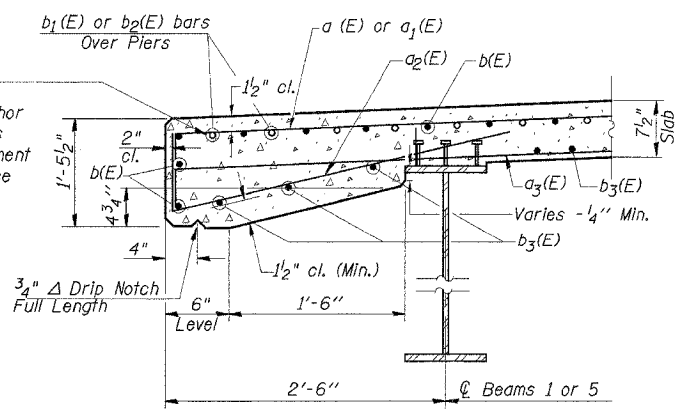


NEAR MIDSPAN

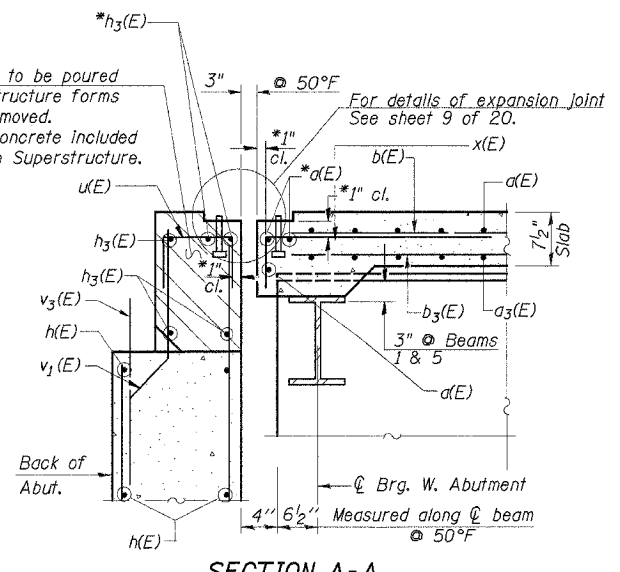
CROSS SECTION
(Looking East)

NEAR PIERS

Reinforcement bars in the top of the deck shall be placed with a 1 1/2" minimum clearance in the area of the rail post anchor devices. The studs of the anchor device shall be placed below the top reinforcement bars a(E) and a1(E) and the outermost longitudinal reinforcement bar b(E) shall be placed directly above the anchor device studs.



SECTION THRU EDGE OF SLAB



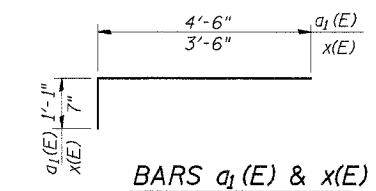
SECTION A-A

(Shown @ West Abutment East Abutment similar)

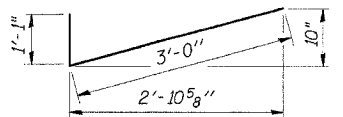
* Place a(E) and h3(E) bars in back of anchor bolts as shown as required to maintain 1" cl. (+0" - 1/8"). Anchor bolts should be tied to a(E) and h3(E) bars.

MIN. BAR LAPS

#5 1'-8"
#6 2'-0"



BARS a1(E) & x(E)



BAR a2(E)

SUPERSTRUCTURE
BILL OF MATERIAL

Bar	No.	Size	Length	Shape
a(E)	718	#5	29'-8"	—
a1(E)	714	#6	5'-7"	—
a2(E)	714	#5	4'-1"	—
a3(E)	499	#5	29'-4"	—
b(E)	510	#5	29'-3"	—
b1(E)	116	#6	23'-3"	—
b2(E)	116	#6	24'-0"	—
b3(E)	416	#5	27'-6"	—
x(E)	60	#5	4'-1"	—
Protective Coat		Sq. Yd.	1,527	
Conc. Superstructure		Cu. Yd.	355.9	
Reinforcement Bars, Epoxy Coated		Pound	82,490	
Bridge Deck Grooving		Sq. Yd.	1,384	

Reinforcement Bars designated (E) shall be epoxy coated.
Bars indicated thus 20x3-#5 etc. indicates 20 lines of bars with 3 lengths per line.

SUPERSTRUCTURE

SECTION 94-00087-00-BR
COUNTY HIGHWAY 23 - FAS ROUTE 429
HANCOCK COUNTY
STA. 313+34

DESIGNED	A.R.K.
CHECKED	S.F.M., F.J.S.
DRAWN	S.A.P.
CHECKED	A.R.K., F.J.S.

4440 ASH GROVE
SPRINGFIELD, IL 62711
(217) 793-8600
oasinc@tamvid.com

OZYURT AND STONE, INC.
CONSULTING ENGINEERS

JOB NO.: 0319
FILE: 0319SUPER.DGN
DATE: 10/12/05