

ROUTE NO.	SECTION	COUNTY	TOTAL SHEETS	SHEET NO.
FAS 429 C.H. 23	94-00087 -00-BR	HANCOCK	43	15
ROAD DIST.	ILLINOIS			

Contract No. 93401  
Sheet 9 of 20

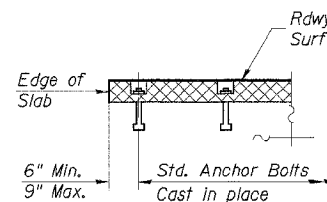
Joint Size	"C" at 50°F	"D" at 50°F
2"	2"	1½" Min.
2½"	2½"	1¾" Min.
4"	3"	2½" Min.

© W. & E. Abuts.

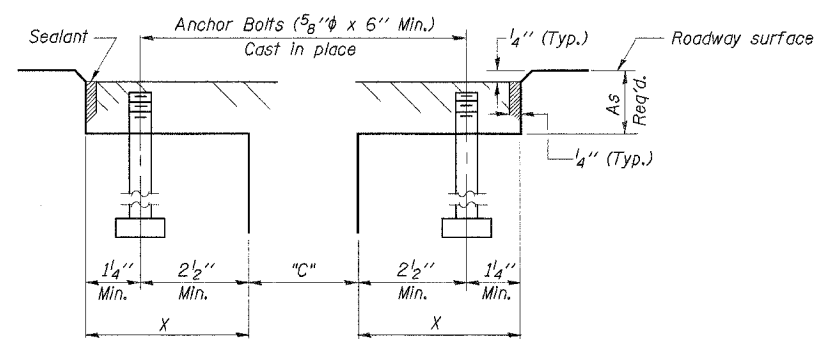
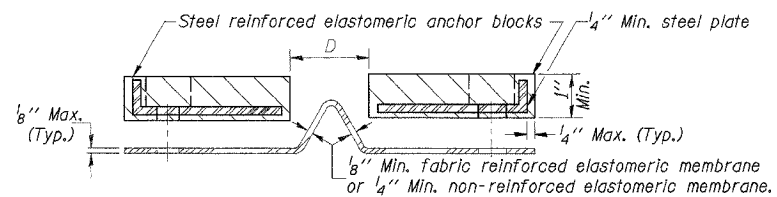
**INSTALLATION NOTES**

- ① Install continuous seal in roadway.
- ② Install anchor blocks as indicated.

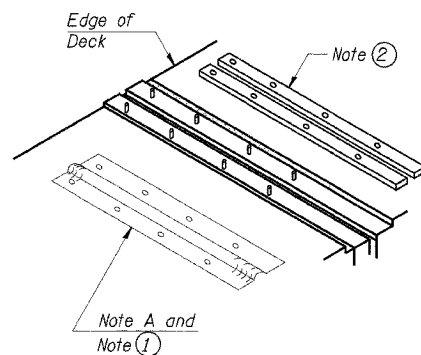
NOTE A: Maximum spacing of anchor bolts shall be 12" centers.



**AT EDGE OF SLAB**



**CROSS SECTION  
NEOPRENE EXPANSION JOINT**



**AT EDGE OF DECK**

**GENERAL NOTES**

Continuous Seal Neoprene Expansion Joint shall consist of molded anchor blocks of elastomer and steel, field assembled over continuous lengths of elastomeric membrane.

The elastomeric membrane shall be premolded with a single or a double upward convolution that will have a "memory" to return to its molded position upon joint closure.

The convolution length shall be such that the extended length will not be greater than the manufactured length when the joint is fully expanded in its design range and will not protrude above the anchor blocks when the joint is fully compressed.

Joint openings shall be adjusted in accordance with Article 503.10(c) of the Standard Specifications when the deck is poured at an ambient temperature other than 50° F.

**BILL OF MATERIAL**

ITEM	UNIT	QUANTITY
Neoprene Expansion Joint 4"	Foot	60

DESIGNED	A.R.K.
CHECKED	S.F.M., F.J.S.
DRAWN	S.A.P.
CHECKED	A.R.K., F.J.S.

**EXPANSION JOINT DETAIL**

SECTION 94-00087-00-BR  
COUNTY HIGHWAY 23 - FAS ROUTE 429  
HANCOCK COUNTY  
STA. 313+34

4440 ASH GROVE SPRINGFIELD, IL 62711 (217) 793-8600 oasinc@amvid.com	<b>OZYURT AND STONE, INC.</b> CONSULTING ENGINEERS	JOB NO.: 0319 FILE: 0319JOINT.DGN DATE: 08/24/05
-------------------------------------------------------------------------------	-------------------------------------------------------	--------------------------------------------------------