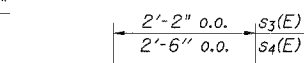
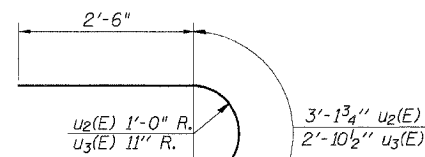


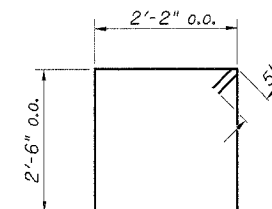
PLAN



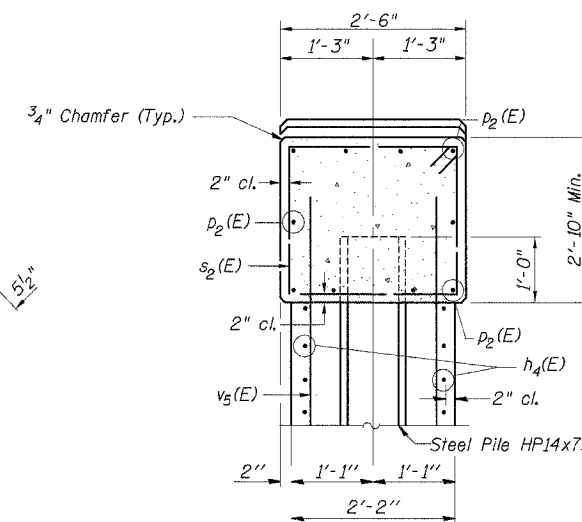
BAR s3(E) or s4(E)



BAR u2(E) & u3(E)



BAR s2(E)



SECTION A-A

NOTES

Space Reinforcement in cap to miss Anchor Bolts.

Pour Steps monolithically with cap.

All edges shall have the standard 3/4" Chamfer except as noted.

Anchor Bolts at fixed bearings may be built into the masonry.

MIN. BAR LAP

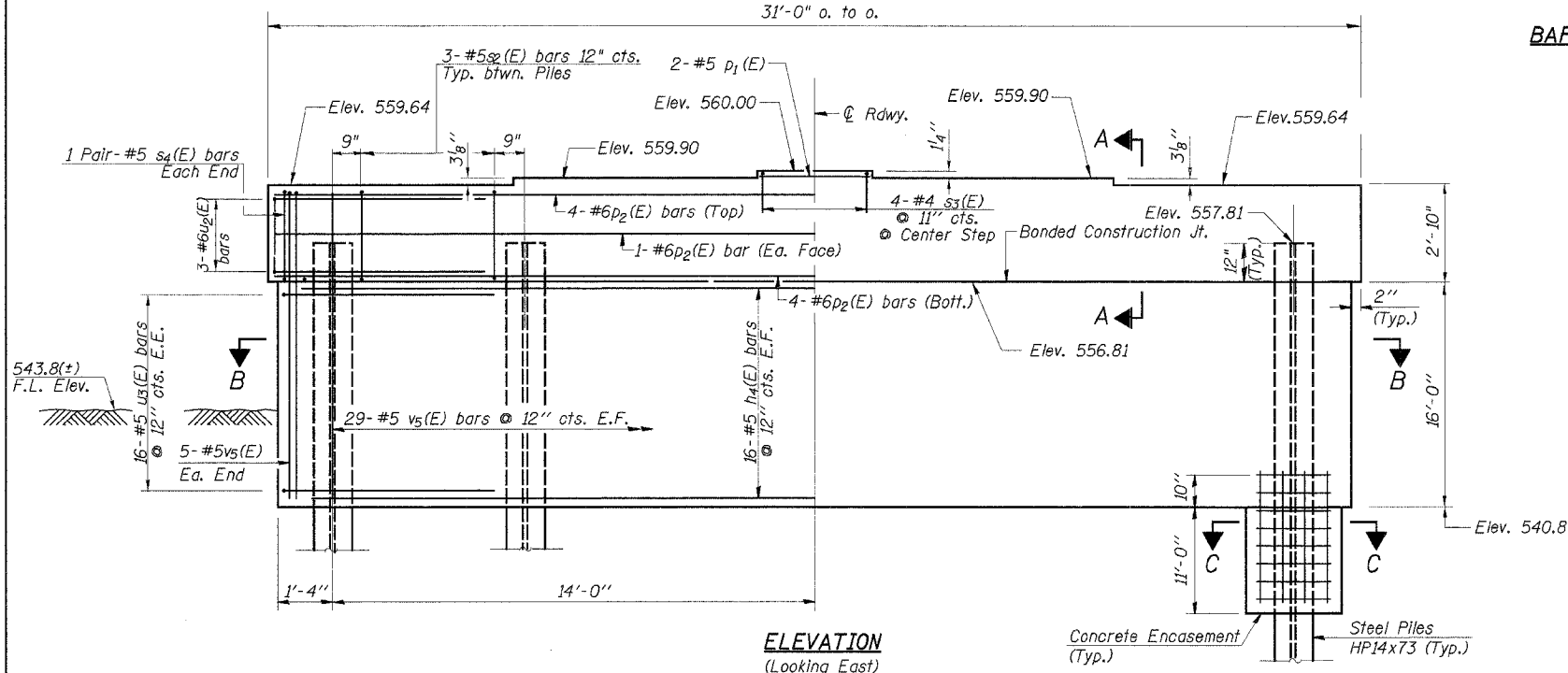
#5 ----- 1'-4"
#6 ----- 1'-7"

BILL OF MATERIAL

BAR	NO.	SIZE	LENGTH	SHAPE
h4(E)	32	#5	26'-4"	—
p1(E)	2	#5	2'-8"	—
p2(E)	10	#6	26'-8"	—
s2(E)	24	#5	10'-3"	⊏
s3(E)	4	#4	5'-2"	⊏
s4(E)	4	#5	5'-0"	⊏
u2(E)	6	#6	8'-2"	⊏
u3(E)	32	#5	7'-11"	⊏
v5(E)	68	#5	17'-0"	—

Concrete Structures	Cu. Yd.	46.5
Reinforcement Bars, Epoxy Coated	Pound	3,120
Steel Piles HP14x73	Foot	576
Test Piles Steel HP14x73	Each	1
Underwater Structure Excavation Protection - Location 2	Each	1
Structure Excavation	Cu. Yd.	24
Concrete Encasement	Cu. Yd.	14.6

Reinforcement bars designated (E) shall be Epoxy Coated

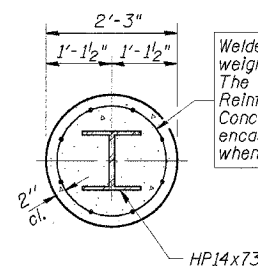


ELEVATION
(Looking East)

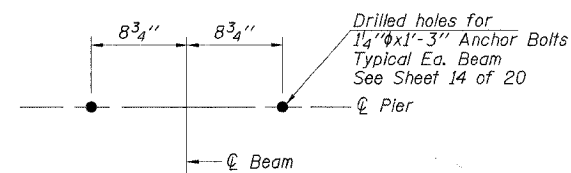
PILE DATA

Type: Steel HP14x73
Capacity: Design-56 Ton/Pile
Drive-83 Ton/Pile
Est. Length: 72 Ft./Pile
No. Required: 9*

* Includes 1 Test Pile to be driven to 125 Ton/Pile in a permanent location.



SECTION C-C



ANCHOR BOLT HOLES

DESIGNED	A.R.K.
CHECKED	S.F.M., F.J.S.
DRAWN	S.A.P.
CHECKED	A.R.K., F.J.S.

PIER 2
SECTION 94-00087-00-BR
COUNTY HIGHWAY 23 - FAS ROUTE 429
HANCOCK COUNTY
STA. 313+34