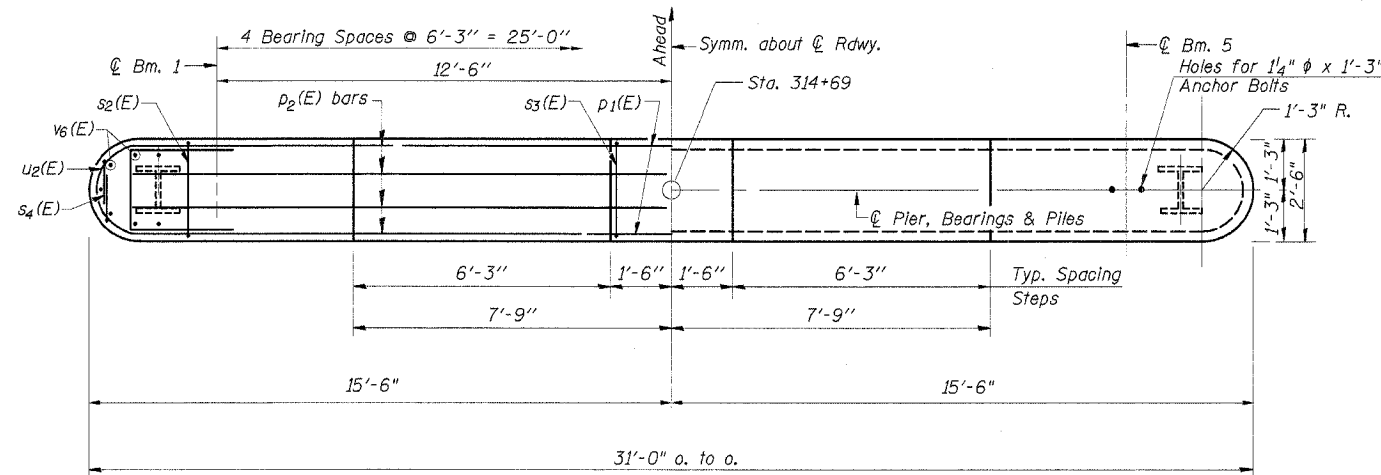
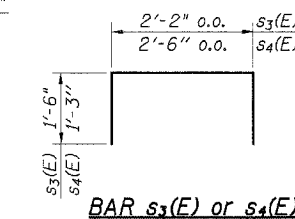


ROUTE NO.	SECTION	COUNTY	TOTAL SHEETS	SHEET NO.
FAS 429	94-00087-00-BR	HANCOCK	43	26
C.H. 23				
ROAD DIST.	ILLINOIS			

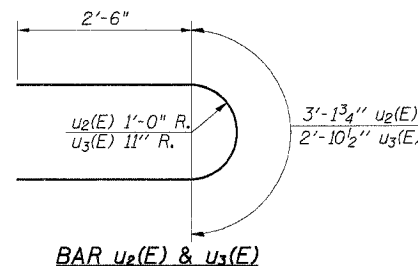
Contract No. 99401
Sheet 20 of 20



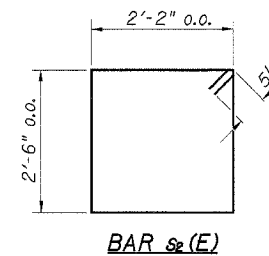
PLAN



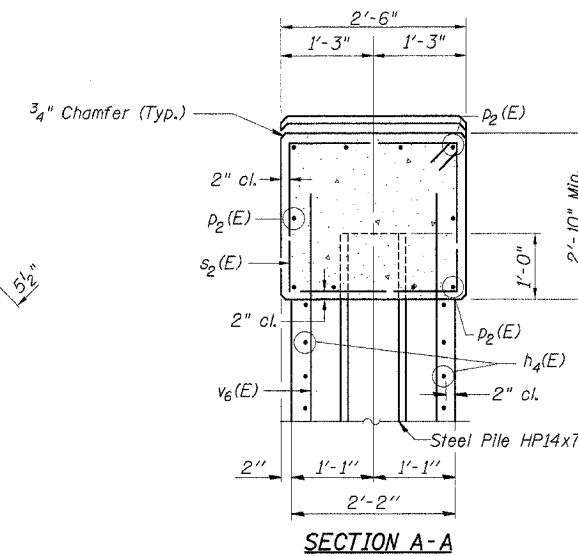
BAR s₃(E) or s₄(E)



BAR u₂(E) & u₃(E)



BAR s₂(E)



SECTION A-A

MIN. BAR LAP

#5	1'-4"
#6	1'-7"

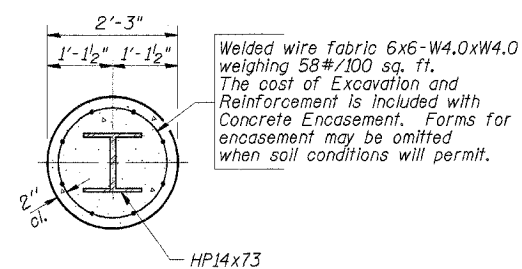
NOTES

- Space Reinforcement in cap to miss Anchor Bolts.
- Pour Steps monolithically with cap.
- All edges shall have the standard 3/4" Chamfer except as noted.
- Anchor Bolts at fixed bearings may be built into the masonry.

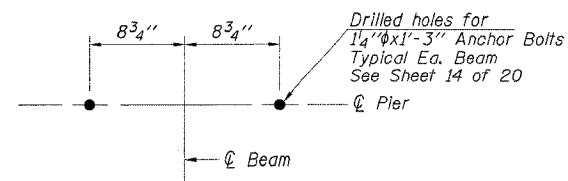
PILE DATA

Type: Steel HP14x73
Capacity: Design-51 Ton/Pile
Drive-77 Ton/Pile
Est. Length: 62 Ft./Pile
No. Required: 9*

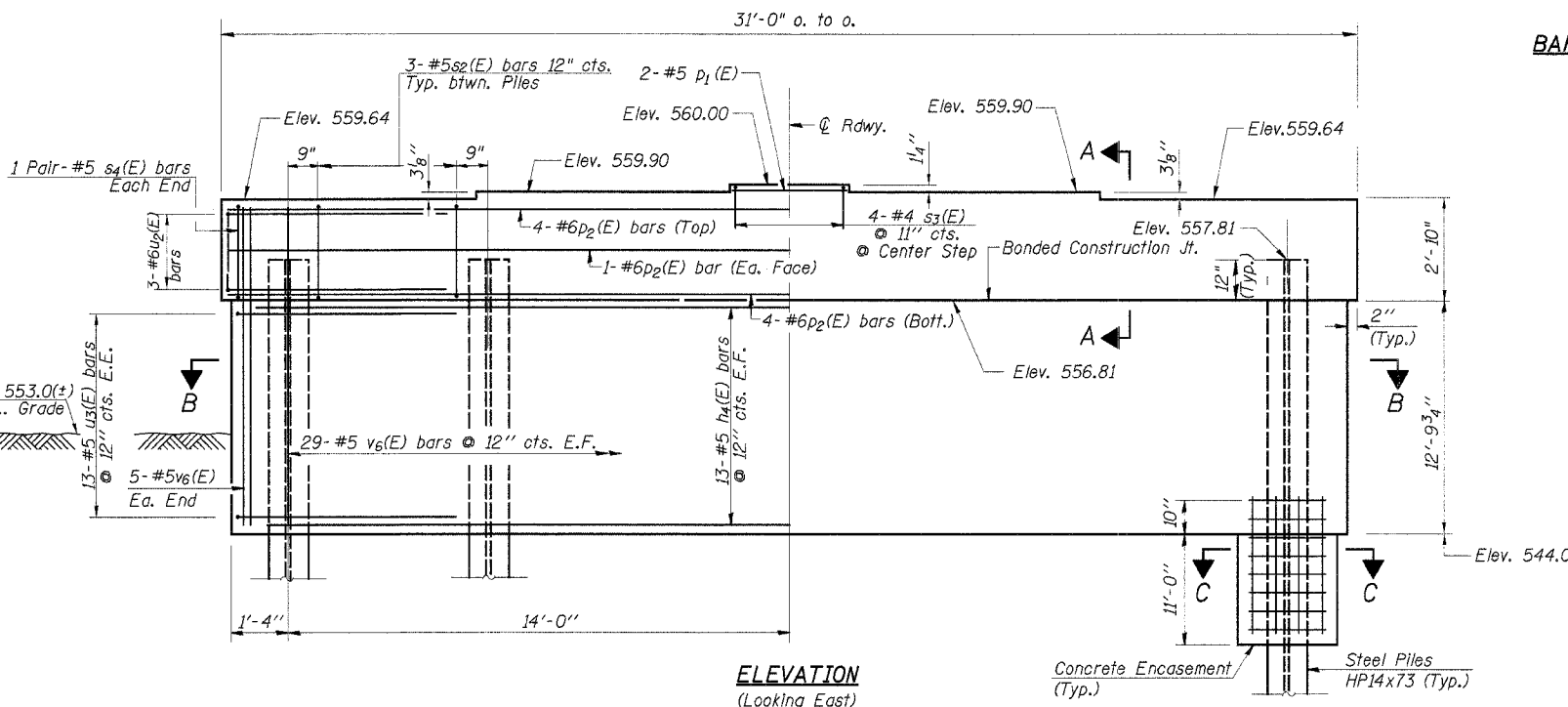
* Includes 1 Test Pile to be driven to 115 Ton/Pile in a permanent location.



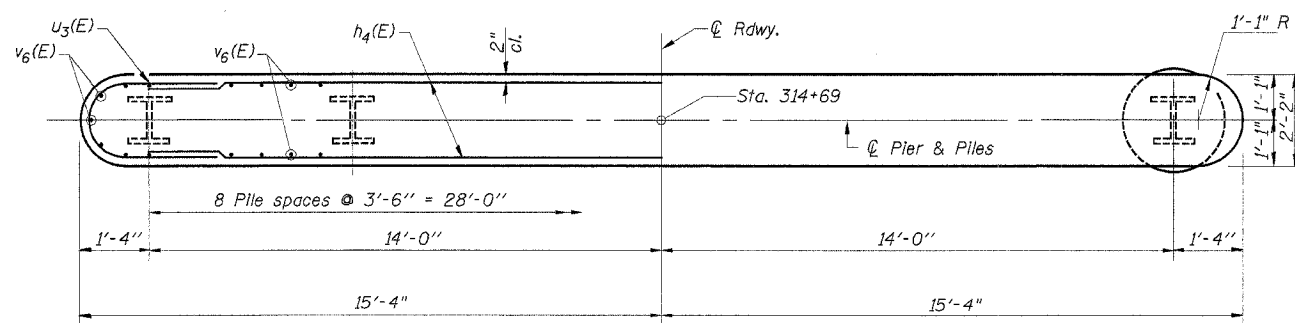
SECTION C-C



ANCHOR BOLT HOLES



ELEVATION
(Looking East)



SECTION B-B

DESIGNED	A.R.K.
CHECKED	S.F.M., F.J.S.
DRAWN	S.A.P.
CHECKED	A.R.K., F.J.S.

BILL OF MATERIAL

BAR	NO.	SIZE	LENGTH	SHAPE
h ₄ (E)	26	#5	26'-4"	—
p ₁ (E)	2	#5	2'-8"	—
p ₂ (E)	10	#6	26'-8"	—
s ₂ (E)	24	#5	10'-3"	□
s ₃ (E)	4	#4	5'-2"	□
s ₄ (E)	4	#5	5'-0"	□
u ₂ (E)	6	#6	8'-2"	U
u ₃ (E)	26	#5	7'-11"	U
v ₆ (E)	68	#5	14'-0"	—

Concrete Structures	Cu. Yd.	38.8
Reinforcement Bars, Epoxy Coated	Pound	2,690
Steel Piles HP14x73	Foot	496
Test Piles Steel HP14x73	Each	1
Underwater Structure Excavation Protection - Location 4	Each	1
Structure Excavation	Cu. Yd.	71
Concrete Encasement	Cu. Yd.	14.6

Reinforcement bars designated (E) shall be Epoxy Coated

PIER 4

SECTION 94-00087-00-BR
COUNTY HIGHWAY 23 - FAS ROUTE 429
HANCOCK COUNTY
STA. 313+34

4440 ASH GROVE SPRINGFIELD, IL 62711 (217) 789-8600 oasinc@famvid.com	OZYURT AND STONE, INC. CONSULTING ENGINEERS	JOB NO.: 0319 FILE: 0319PIER4.DGN DATE: 10/12/05
--	---	--