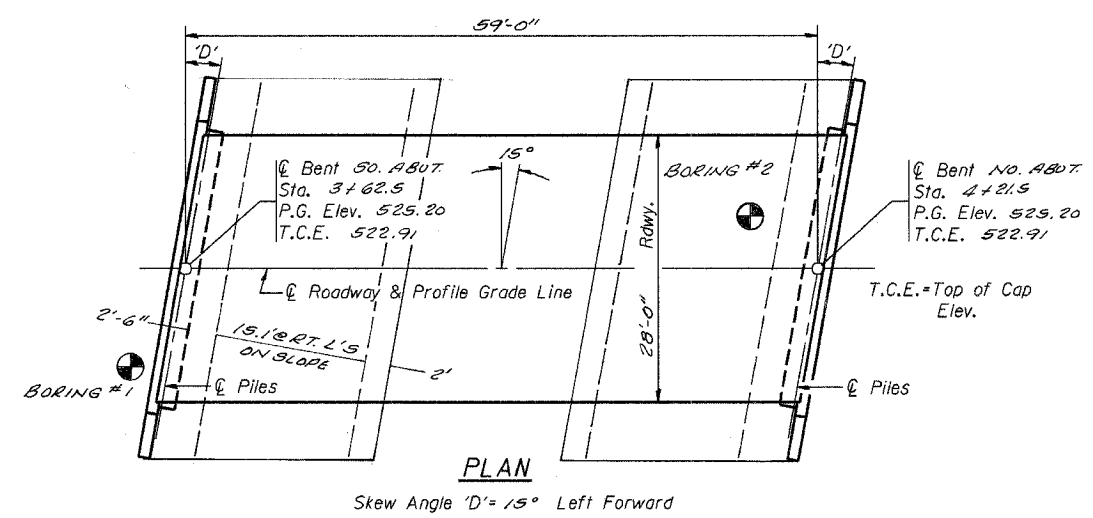
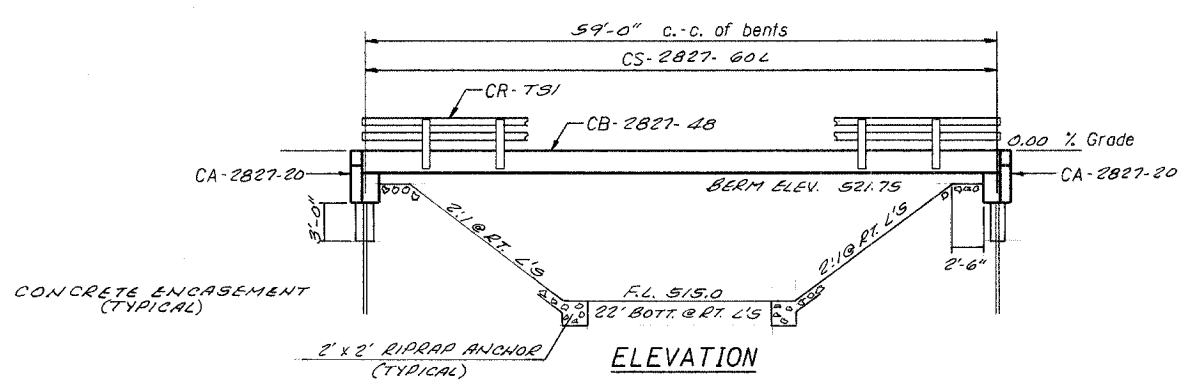


ROUTE NO.	SECTION	COUNTY	TOTAL SHEETS	SHEET
	*	CRAWFORD	9	3
FED. AID DIST. NO. 1		ILLINOIS	FED. AID PROJECT	

05-09122-00-BR

B.M.  
Existing Structure  
Salvage



STONE DUMPED RIPRAP CL. A4  
12" MINIMUM THICKNESS = 89 TON

**GENERAL NOTES**

- The Contractor shall drive 1 test piles, as specified, in a permanent location as directed by the Engineer before ordering the remaining piles.
- See Special Provisions for boring logs.
- A Corrosion inhibitor, as covered in the Special Provisions, shall be used in the concrete for precast prestressed concrete deck beams.

**TOTAL BILL OF MATERIAL**

Item	Unit	Super	Sub.		Total
			Piers	Abuts.	
Removal of Existing Structures	Each				1
Bituminous Concrete Surface Course, Superpave	Ton				
Waterproofing Membrane System	Sq. Yd.				
Concrete Structures	Cu. Yd.			22.2	22.2
Precast Prestressed Concrete Deck Beams (27" Depth)	Sq. Ft.	1680			1680
Steel Bridge Rail, Type SM	Foot				
Steel Railing, Type S-1	Foot	120			120
Reinforcement Bars	Pound			2680	2680
Furnishing STEEL PILES HP 10 x 42	Foot			280	280
Driving STEEL PILES	Foot			280	280
Test Piles STEEL HP 10 x 42	Each			1	1
Name Plates	Each			1	1
Concrete Encasement	Cu. Yd.			2.6	2.6
Portland Cement Mortar Fairing Course	Foot				
STONE DUMPED RIPRAP CL. A4					89

**DESIGN SPECIFICATIONS**  
2002 AASHTO Standard Specifications - 17th ed.

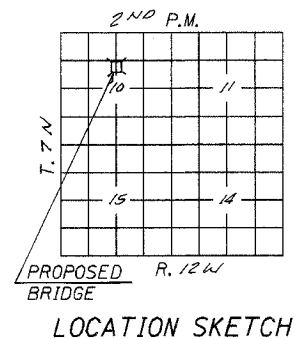
**LOADING HS20-44**  
Allow 25#/sq. ft. for future wearing surface.

**SEISMIC DATA**  
Seismic Performance Category (SPC) =  
Bedrock Acceleration Coefficient (A) =  
Site Coefficient (S) =

**PILE DATA (2-ABUTS.)**  
Type STEEL HP 10 x 42  
Capacity REFUSAL Tons  
Estimated Length 30 Feet SOUTH ABUT. & 32' NORTH ABUT.  
Number Required 10 (Includes 1 Test Pile located in Bent #1) SOUTH ABUT.

STATION 3+92  
SUGAR CREEK  
SEC. 05-09122-00-BR BUILT 20  
PROJECT NO. BR05-039(43)  
CRAWFORD COUNTY  
LOADING HS20  
STR. NO. 017-3721

**LETTERING FOR NAME PLATE**  
Locate Name Plate at SOUTHEAST Corner of Bridge (See Std. CN)



**WATERWAY INFORMATION**

Drainage Area = 1.18 SQ. MI. Low Grade Elev. = 522.9 @ Sta. 5+00

Flood Yr.	Q C.F.S.	Opening Exist.	Sq. Ft. Prop.	Nat. H.W.E.	Head - Ft. Exist.	Headwater El. Prop.
Design	25 667	58 766	58 173	520.3	1.1 0.2	521.4 520.9
Base	100 923	88 306	52 777	520.8	2.1 0.3	522.9 521.1
Overtopping						
Max. Calc.	500 1224			521.4	0.4	521.8

**INDEX OF SHEETS**

- General Plan & Elevation
- Standard CS-2827-60L
- Standard CB-2827-48
- Standard CA-2827-20
- Standard CR-731
- Standard CN
- Standard CX-1
- Standard
- Standard

**GENERAL PLAN & ELEVATION**  
TR ROUTE 202  
OVER SUGAR CREEK  
SECTION 05-09122-00-BR  
CRAWFORD COUNTY  
STATION 3+92