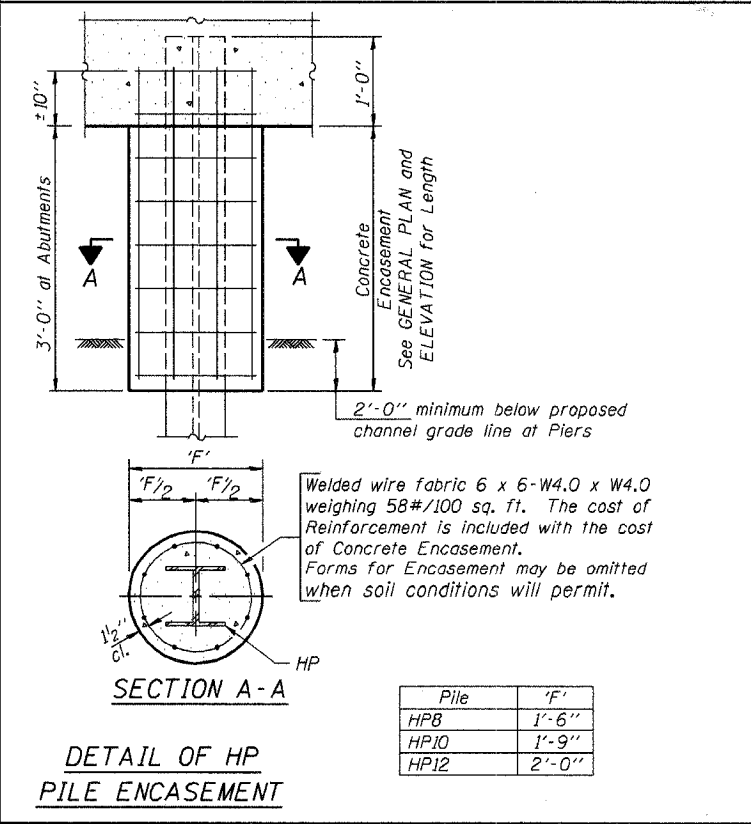
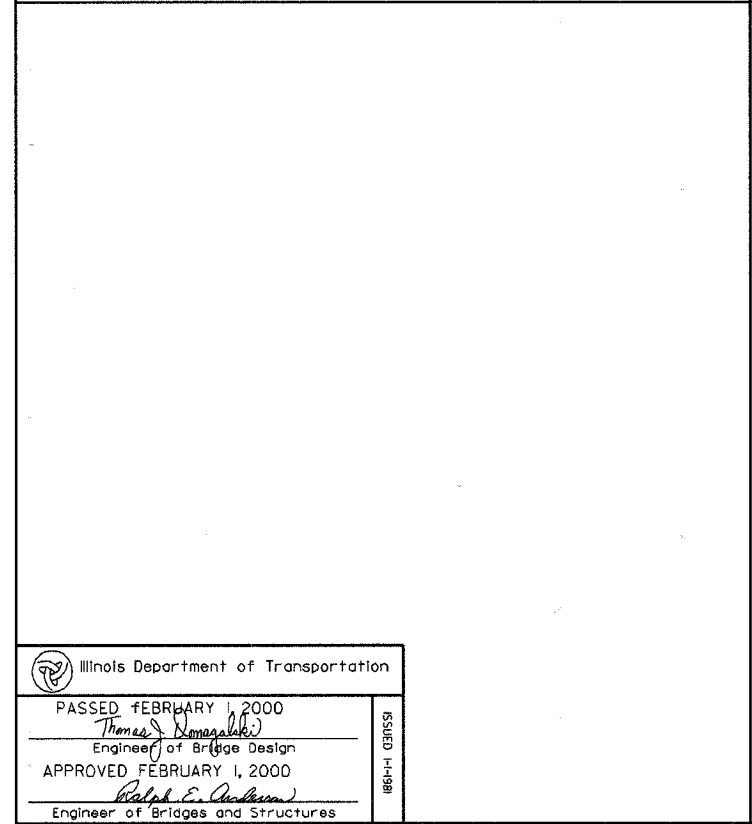
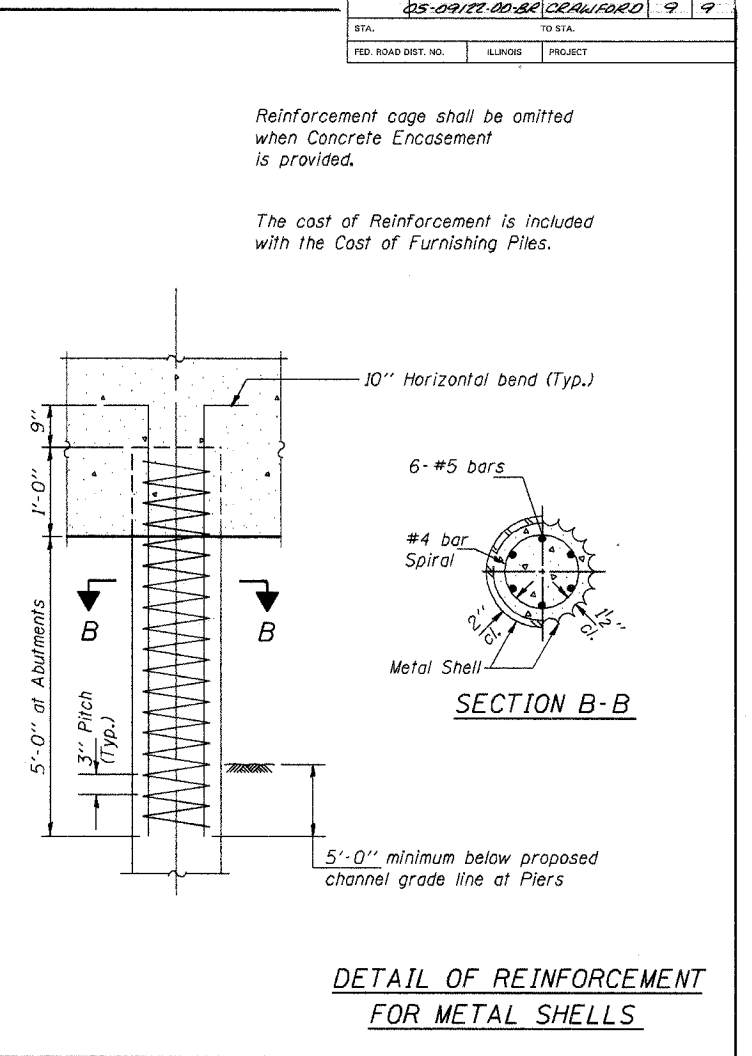
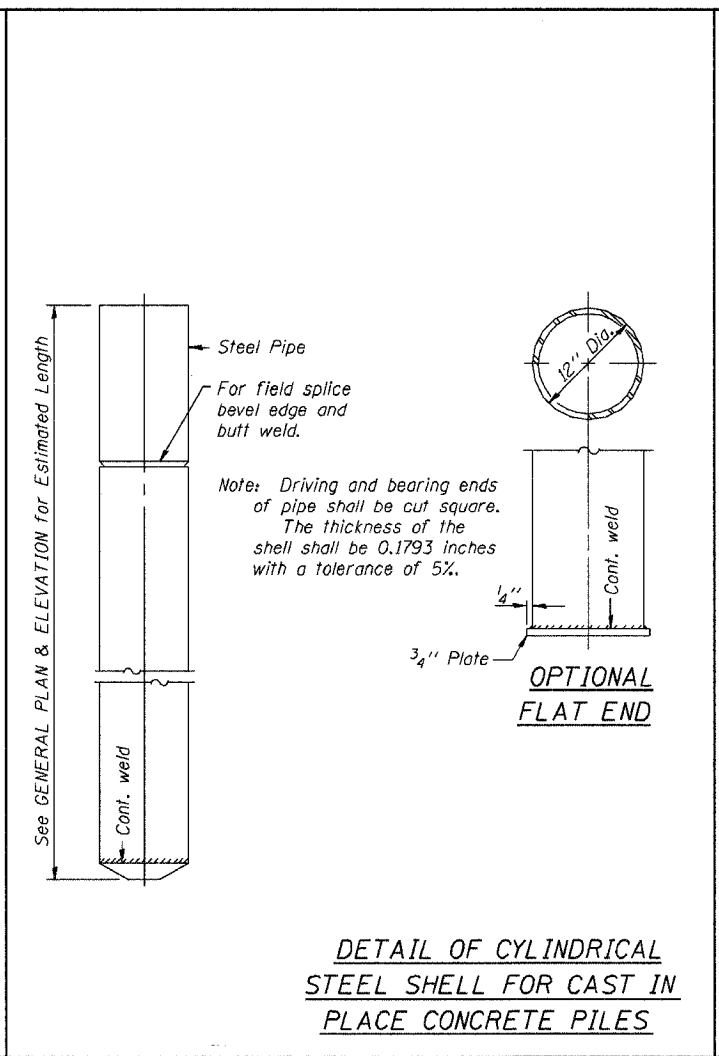
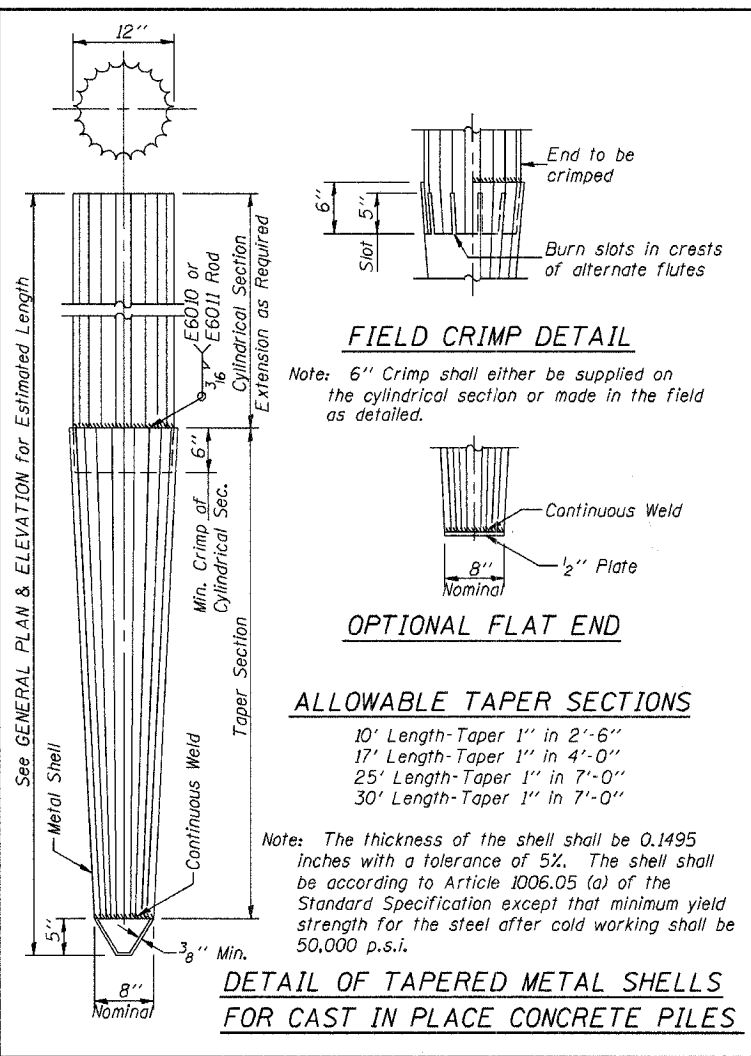
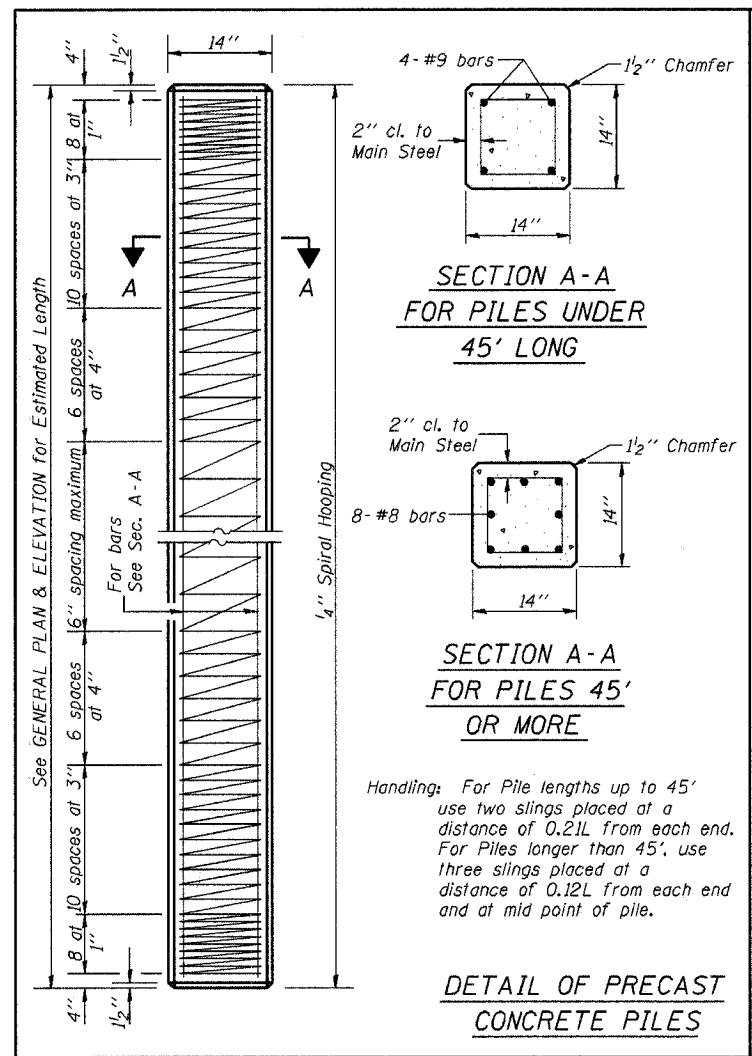


F.A.S. ROUTE NO.	SECTION	COUNTY	TOTAL SHEETS	SHEET
05-0917-00-82	CRAWFORD		9	9
STA.	TO STA.			
FED. ROAD DIST. NO.	ILLINOIS	PROJECT		



**QUANTITIES/FT. OF ENCASEMENT (STEEL PILES)**

Pile Size	Item	Quantity
HPB	Concrete Encasement	0.063 C.Y.
HP10	Concrete Encasement	0.086 C.Y.
HP12	Concrete Encasement	0.112 C.Y.

**(METAL SHELL PILES)**

Pile Size	Item	Quantity
12" Dia.	Concrete Encasement	0.087 C.Y.

**PILE DETAILS**

**STANDARD CX-1**

Illinois Department of Transportation

PASSED FEBRUARY 1, 2000

Thames S. Demerakos  
 Engineer of Bridge Design

APPROVED FEBRUARY 1, 2000

Ralph E. Anderson  
 Engineer of Bridges and Structures