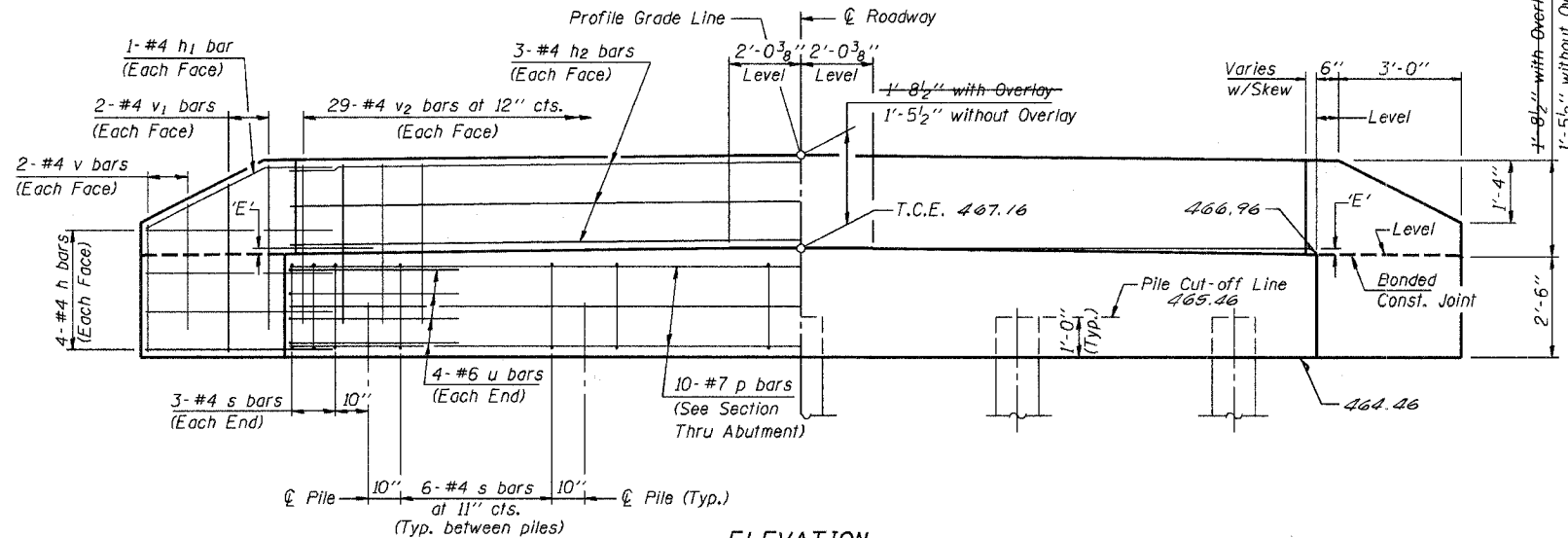
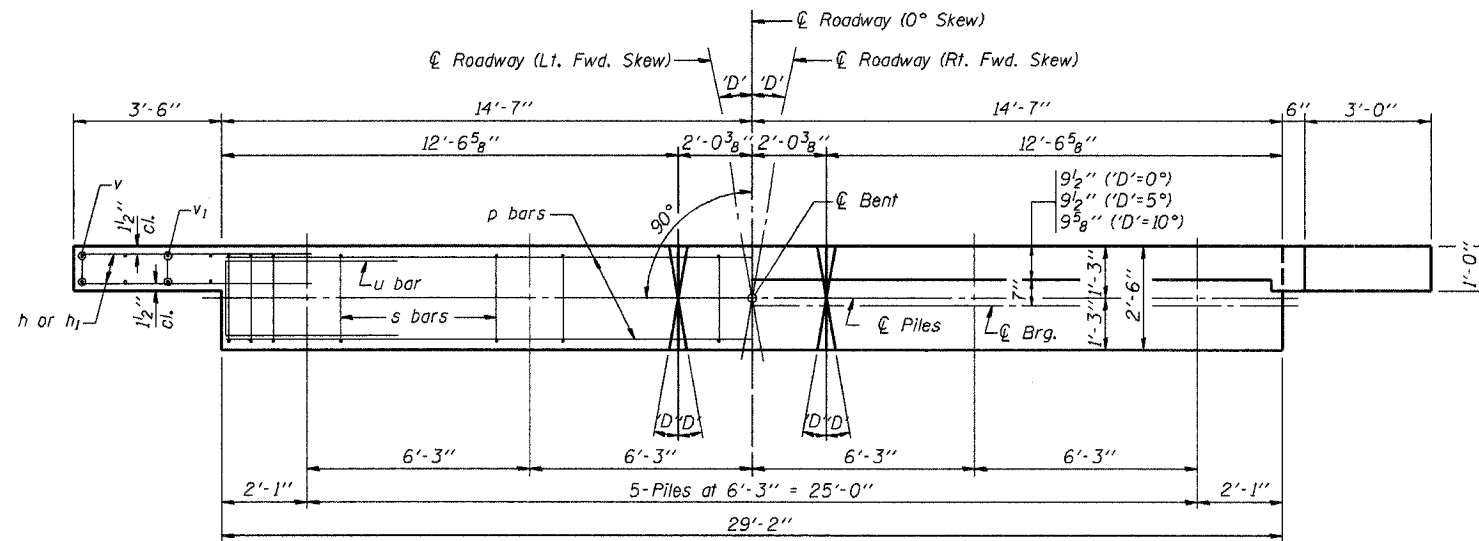


F.A.S. ROUTE NO.	SECTION	COUNTY	TOTAL SHEETS	SHEET
	05-02114-00-BR	CRAWFORD	11	7
STA.	TO STA.			
FED. ROAD DIST. NO.	ILLINOIS	PROJECT		



DIMENSION 'E'

GRADE	'D'=0°		'D'=5°		'D'=10°	
	UPGRADE END	DOWNGRADE END	UPGRADE END	DOWNGRADE END	UPGRADE END	DOWNGRADE END
0%	2 3/8"	2 3/8"	2 3/8"	2 3/8"	2 3/8"	2 3/8"
Over 0% to 1%	2 3/8"	2 3/8"	2 1/4"	2 3/8"	2 1/8"	2 1/2"
Over 1% to 2%	2 3/8"	2 3/8"	2 1/8"	2 1/2"	1 7/8"	2 3/4"
Over 2% to 3%	2 3/8"	2 3/8"	2"	2 5/8"	1 5/8"	3"
Over 3% to 4%	2 3/8"	2 3/8"	1 7/8"	2 3/4"	1 3/8"	3 1/4"

NOTES

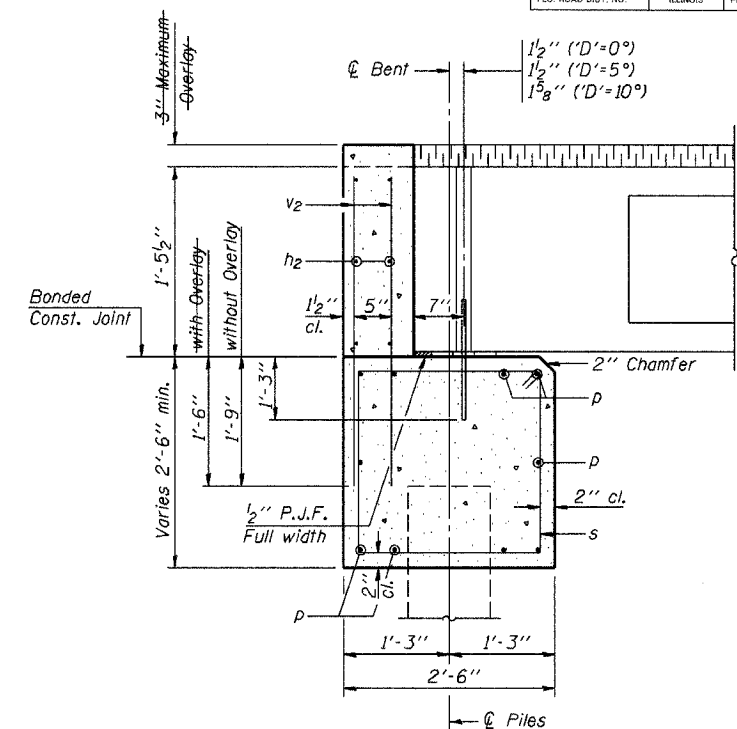
- The Backwall and the portion of the Wingwalls above the bonded construction joint shall be cast against the in-place beam.
- Reinforcement bars shall conform to the requirements of A.A.S.H.T.O. M-31 or M-322, Grade 60.
- Space reinforcement in cap to miss anchor bolts.

MAXIMUM PILE LOADS

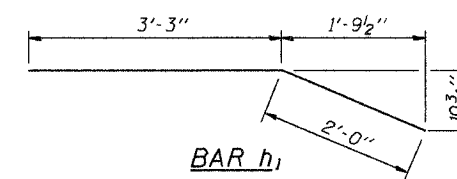
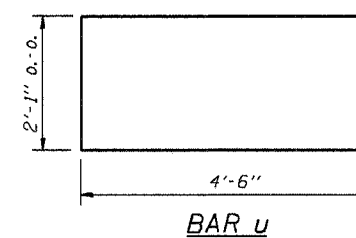
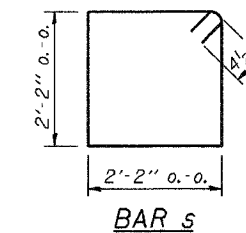
SPAN	TONS
25'	25
30'	25
35'	25
40'	27

DESIGN STRESSES

f'c = 3,500 psi
fy = 60,000 psi



SECTION THRU ABUTMENT
(At Right Angles)



BILL OF MATERIAL FOR ONE ABUTMENT

Bar	No.	Size	Length	Shape
h	16	#4	5'-0"	—
h1	4	#4	5'-3"	—
h2	6	#4	28'-10"	—
p	10	#7	28'-10"	—
s	30	#4	9'-5"	□
u	8	#6	11'-1"	□
v	8	#4	2'-6"	—
v1	8	#4	3'-5"	—
v2	58	#4	3'-1"	—
Concrete Structures			9.5 Cu. Yds.	
Reinforcement Bars			1250 Lb.	

P.P.C. DECK BEAMS PILE BENT ABUTMENT		
28' RDWY.	17" BMS.	'D'=0°, 5° OR 10°
STANDARD CA-2817-10		

Illinois Department of Transportation

PASSED APRIL 4, 2005
Thomas S. Ramagala
Engineer of Bridge Design

APPROVED APRIL 4, 2005
Ralph E. Anderson
Engineer of Bridges and Structures

186-1-1 03/05/51