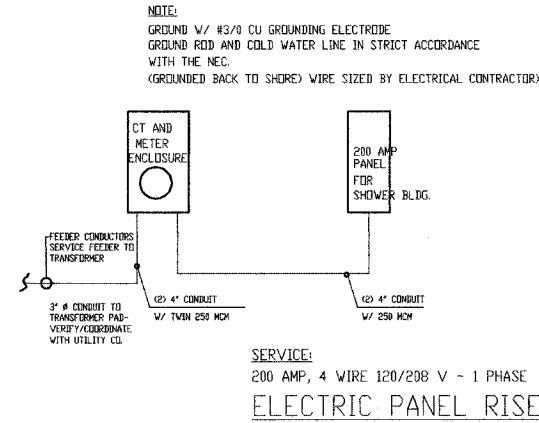


GENERAL NOTES

1. PROVIDE CONNECTION FOR ONE POWER OUTLET, ONE COMPUTER POWER OUTLET, ONE VOICE LINE AND ONE DATA LINE PER OWNER LOCATION (STORAGE 103)
2. REFER TO OTHER SHEET A0.0 FOR ADDITIONAL SPECIFICATIONS.
3. COORDINATE ALL VOICE, POWER, DATA, AND LIGHTING REQUIREMENTS WITH OWNER'S FURNITURE AND EQUIPMENT.
4. LOCATE BUILDING TRANSFORMER. COORDINATE FINAL LOCATION WITH POWER COMPANY (AMEREN UE) AND GENERAL CONTRACTOR (RE: ALO)

LEGEND

- 'HUBBELL' 8' 26 WATT 'D42' COMPACT FLUORESCENT DOWNLIGHT - OR EQUAL. LAMP: 26WPF TRIM FINISH: 4498SF (EXTERIOR SOFFIT W/ 13 FC @ 10'-0")
- 2 LAMP 48" FLUORESCENT FIXTURE (18)
- BATTERY BACKUP EMERGENCY LIGHTING. 'PRESOLITE' EMAX SERIES - WEDGE SHAPE. W/ 6V HALOGEN T 2 1/4 LAMPS. - OR EQUAL.
- 'PRESOLITE' GC SERIES LED. - WHITE W/ 6" LETTERS SINGLE FACED VERSION. CLG. MTD. EXIT SIGN. - OR EQUAL.
- 'HEWILLIAMS' 1x4' SURFACE MTD. FIXTURE 11-4-232-RA12125-EBR82-120 - OR EQUAL.



SERVICE : 200 AMP
(1) 200 AMP

LIGHTING LOAD: BATH HOUSE
PROVIDE 20 AMP SPACES
3.5 VA PER SF. OF FLOOR SPACE
3.5 VA x 1,232 SF. ± = (4,312 VA / 240) = 18 AMPERES

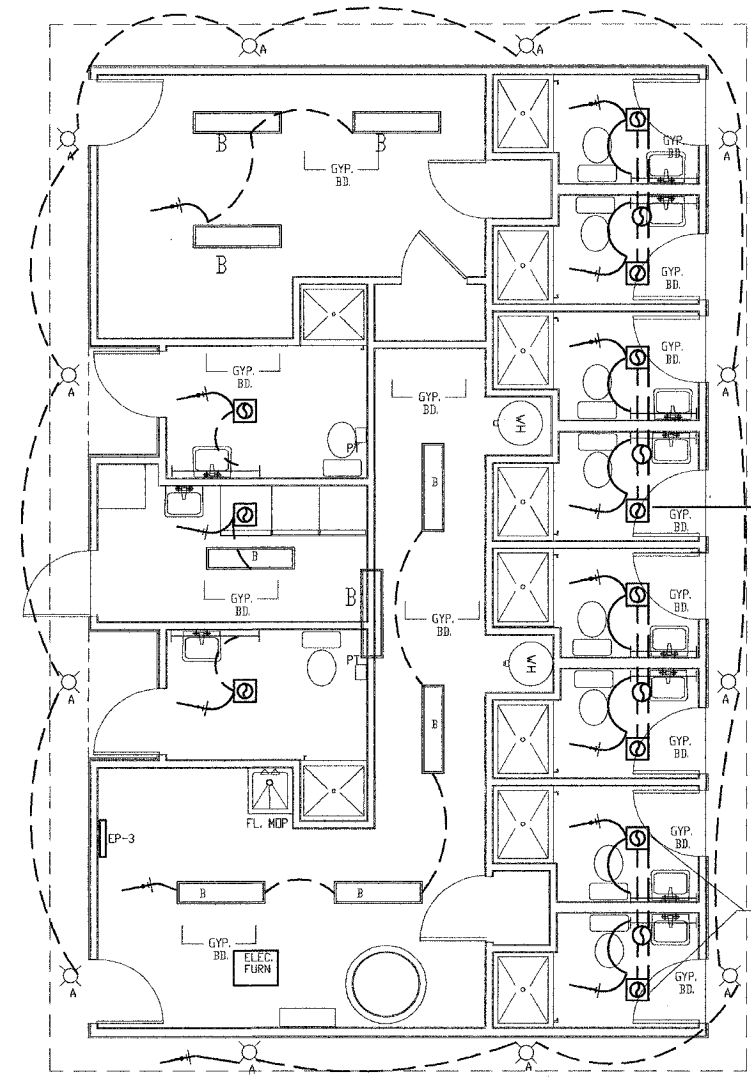
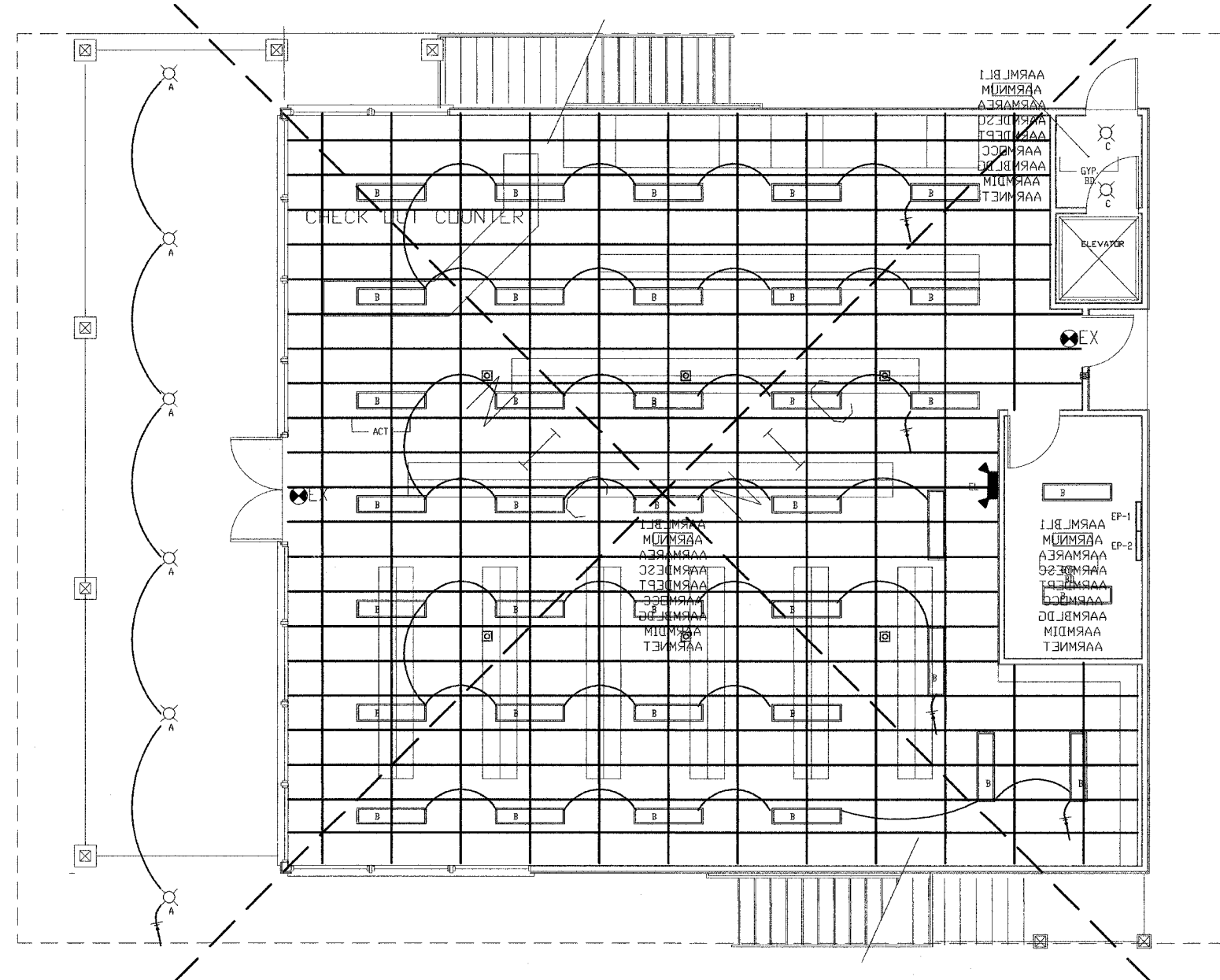
COMMON RECEPTACLE LOAD:
PROVIDE 15 AMP SPACES
1.5 VA PER SF. OF FLOOR SPACE
MAXIMUM 10 OUTLETS PER 15 AMP BREAKER
1.5 VA x 3970 SF. (INCLUDES BATHHOUSE) = (5,955 VA / 240) = 24 AMPERES

DEDICATED LOAD (EXHAUST FANS - 9 TOTAL)
15 AMP BREAKERS EACH
LOAD: 22 AMPS TOTAL

DEDICATED LOAD (DRYERS):
40 AMP BREAKERS EACH
LOAD: 24 AMPS x (2) = 48 AMPS

DEDICATED LOAD (AIR CONDITIONERS):
60 AMP BREAKERS EACH
LOAD: 24 AMPS x (2) = 48 AMPS

TOTAL DEMAND LOAD:
160 AMPERES



PROVIDE (2) PHOTO ELECTRIC FIXTURE (INCANDESCENT) IN CLESTORY 150 WATT EACH

Restroom Exhaust Fan: 'Green' single port 6" duct Model #SP140
(VENTED TO SOFFIT SEPARATELY - EXHAUST FAN WORK BY HVAC CONTRACTOR)

Revised 1-11-06

150 CFM ELEC. FAN CONNECT EACH FAN TO EXHAUST UP THRU ROOF

EXTERIOR RECESSED FIXTURES ARE CONTROLLED BY PHOTOELECTRIC SWITCH

LIGHTING PLAN
1/4" = 1'-0"



JOHN A. SHORTAL, ARCHITECT, LTD.
608 POPLAR STREET
JERSEYVILLE, ILLINOIS 62052
(618) 779-2740

CITY OF GRAFTON
GRAFTON, IL 62037

GRAFTON HARBOR MARINA PROJECT RESTROOM BUILDING
215 W. WATER STREET
GRAFTON, IL 62037

DATE: 9/1/05
REVISED: 00/00/00
ISSUED: FOR BID
PROJ. NO.: 40001
DRAWN BY: JoS

SHEET TITLE
LIGHTING PLAN
(12)

E1.0