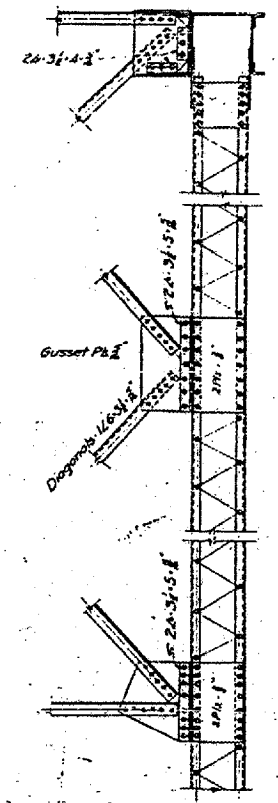
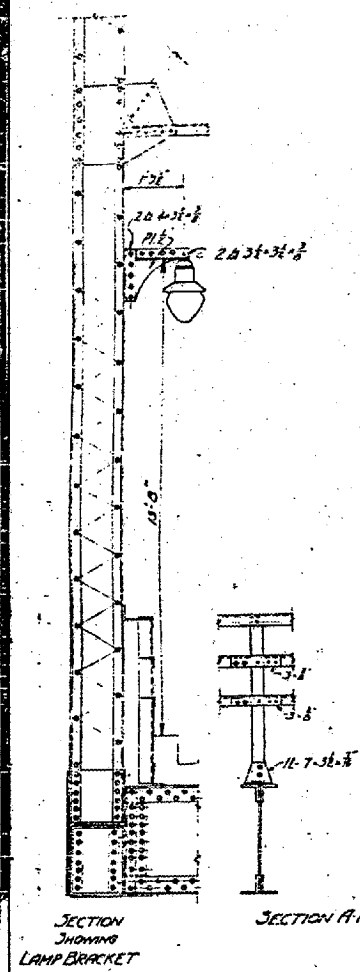
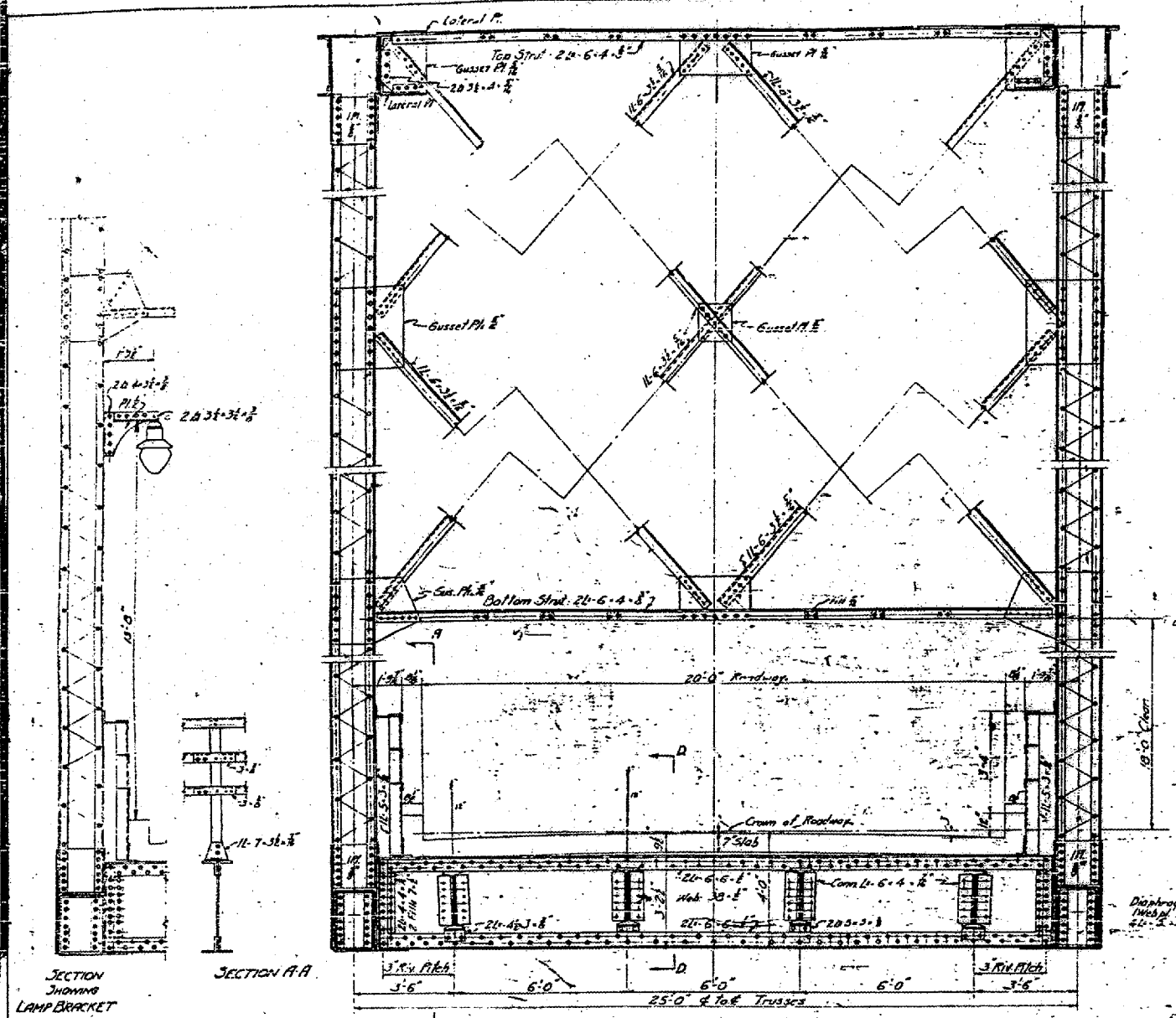
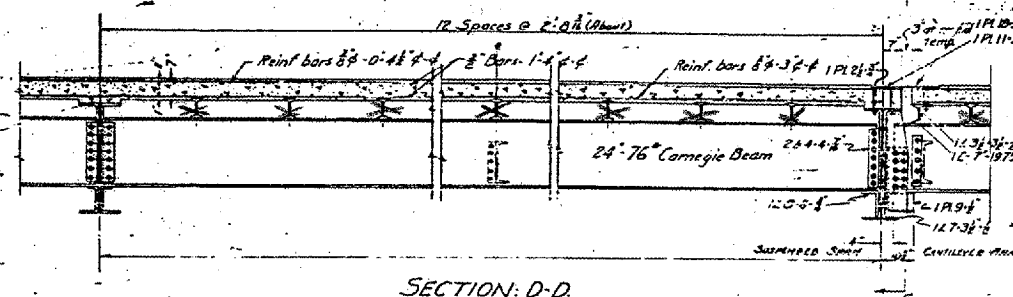
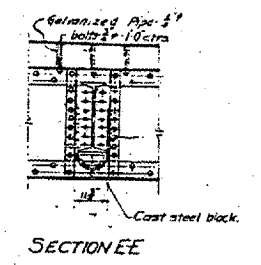


CONTRACT 98939  
 U.S. RTE. 60 & U.S. RTE. 62  
 (138D-BR) P-1  
 ALEXANDER COUNTY  
 SHEET 6 OF 85

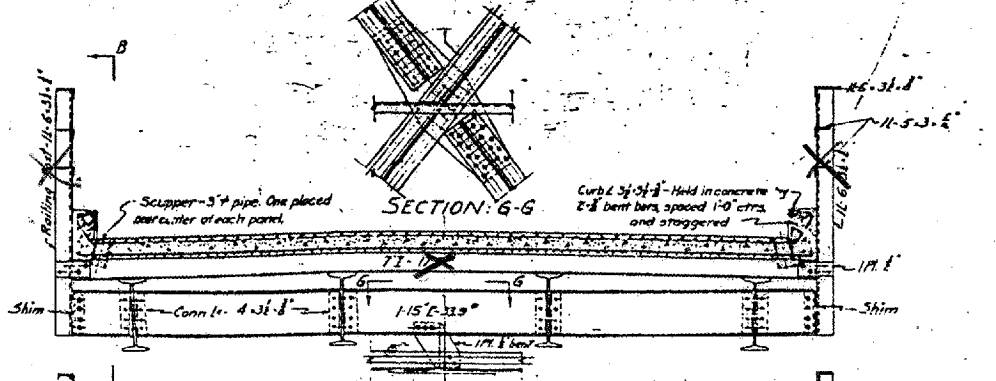


SWAY BRACING AT POSTS  
 Otherwise similar to sway bracing of hangers.

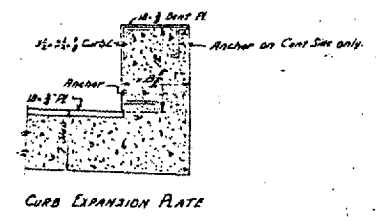


SECTION: D-D

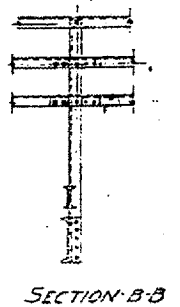
CROSS SECTION INTERMEDIATE FLOOR BEAM



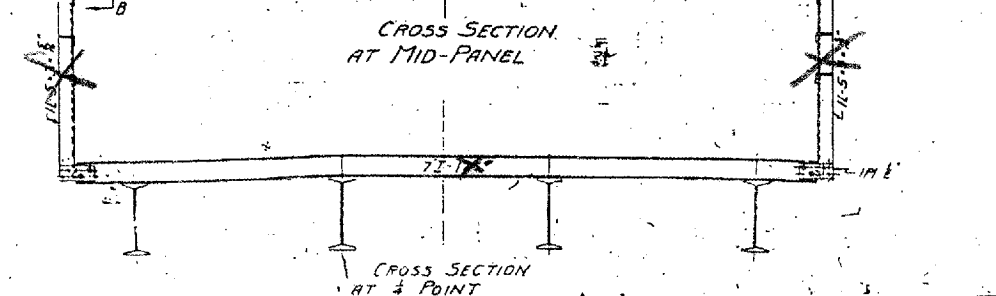
SECTION: G-G



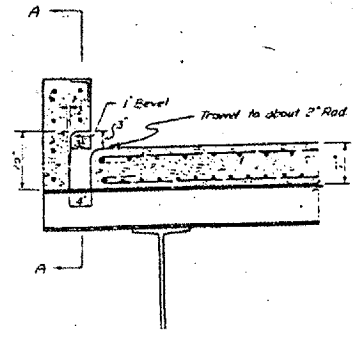
CURB EXPANSION PLATE



SECTION: B-B



CROSS SECTION AT MID-PANEL



SECT A A

BRIDGE NO. 1  
 STRUCTURE 002-0005  
 FOR INFORMATION ONLY

THE CAIRO BRIDGE AND TERMINAL COMPANY  
 MISSISSIPPI RIVER BRIDGE AT CAIRO, ILLINOIS  
 FLOOR-MAIN SPAN  
 Scale: 1/4" = 1'-0"  
 WADDELL AND HARDESTY CONSULTING ENGINEERS  
 NEW YORK CITY MAY 12, 1927  
 Revised Dec 20 1927  
 Mar 9 1928