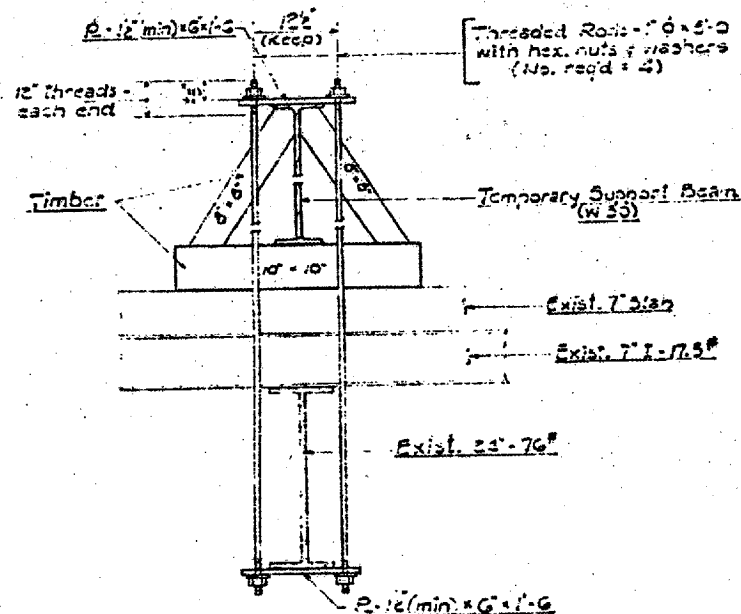


TEMPORARY SUPPORT



SEC. A-A

MATERIAL LIST

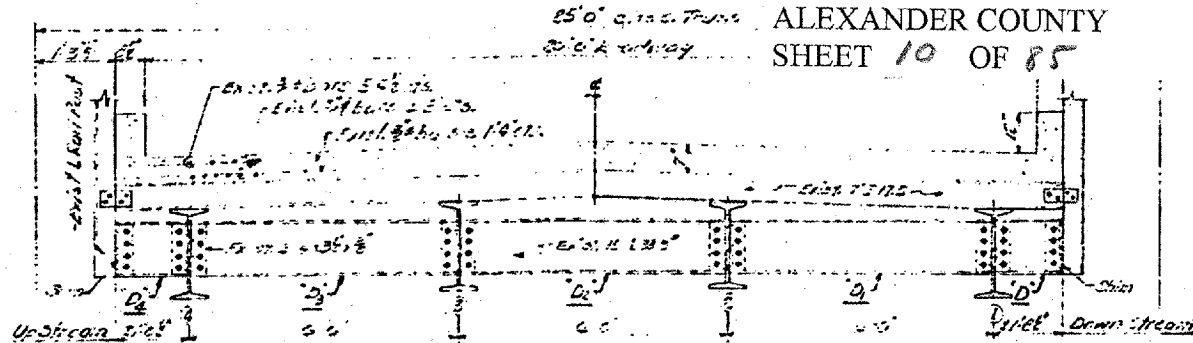
Type	No.	Size
Tim. Sections	6	2" x 4" x 8'-6" x 3'-0"
Web Plates	2	2" x 6" x 6"
	2	2" x 6" x 6"
Field Plates	4	2" x 6" x 6"
Flange Plates	6	1/2" x 6" x 6"
Diaph. B.	10	2" x 6" x 3" x 1'-4"

NOTE: H.S. Bolts not shown in field detail.

DESIGNED ENR	EXAMINED
CHECKED APW	PASSED
DRAWN ENR	APPROVED
CHECKED APW	

DIAPHRAGM NOTES

- L-15" CUT 1/2" OFF THE END OF DIAPHRAGMS D2 & D3 NEXT TO BLS. #3. INSTALL NEW CONNECTION ANGLES 4" x 6" x 3/8" x 1'-4" AND 1/2" FILL PLATES ON THE CUT-OFF END OF DIAPHS. D2 & D3. FIELD LOCATE THE HOLES AND DRILL FOR H.S. BOLTS.
- L-23" CUT 1/2" OFF THE END OF DIAPHRAGMS D1, D3 & D4 NEXT TO BLS. #1 & #4. INSTALL NEW CONNECTION ANGLES 4" x 6" x 3/8" x 1'-4" AND 1/2" FILL PLATES ON THE CUT-OFF END OF DIAPHS. D1, D3 & D4. FIELD LOCATE THE HOLES AND DRILL FOR H.S. BOLTS.
- L-47" CUT 1/2" OFF THE END OF DIAPHRAGMS D3 & D4 NEXT TO BLS. #4. INSTALL NEW CONNECTION ANGLES 4" x 6" x 3/8" x 1'-4" AND 1/2" FILL PLATES ON THE CUT-OFF END OF DIAPHS. D3 & D4. FIELD LOCATE THE HOLES AND DRILL FOR H.S. BOLTS.
- L-55" CUT 1" OFF THE END OF DIAPHRAGM D2 NEXT TO BLS. #2. CUT 1/2" OFF THE END OF DIAPHRAGMS D1 & D3 NEXT TO BLS. #1 & #3 RESPECTIVELY. SALVAGE AND REUSE EXISTING CONNECTION ANGLE ON DIAPH. D2 AT BLS. #2 AND USE 1/2" FILL PLATES. INSTALL NEW CONNECTION ANGLES 4" x 6" x 3/8" x 1'-4" AND 1/2" FILL PLATES ON THE CUT-OFF END OF DIAPHS. D1 & D3. FIELD LOCATE THE HOLES AND DRILL FOR H.S. BOLTS.
- L-79" CUT 1" OFF THE END OF DIAPHRAGMS D1 & D3 NEXT TO BLS. #1 & #3. CUT 1/2" OFF THE END OF DIAPHRAGMS D2 & D4 NEXT TO BLS. #2 & #4 RESPECTIVELY. SALVAGE AND REUSE EXISTING CONNECTION ANGLE ON DIAPH. D1 & D3 AT BLS. #1 & #3 AND USE 1/2" FILL PLATES. INSTALL NEW CONNECTION ANGLES 4" x 6" x 3/8" x 1'-4" AND 1/2" FILL PLATES ON THE CUT-OFF END OF DIAPHS. D2 & D4. FIELD LOCATE THE HOLES AND DRILL FOR H.S. BOLTS.
- L-87" CUT 1/2" OFF THE END OF DIAPHRAGMS D2 & D3 NEXT TO BLS. #2. INSTALL NEW CONNECTION ANGLES 4" x 6" x 3/8" x 1'-4" AND 1/2" FILL PLATES ON THE CUT-OFF END OF DIAPHS. D2 & D3. FIELD LOCATE THE HOLES AND DRILL FOR H.S. BOLTS.

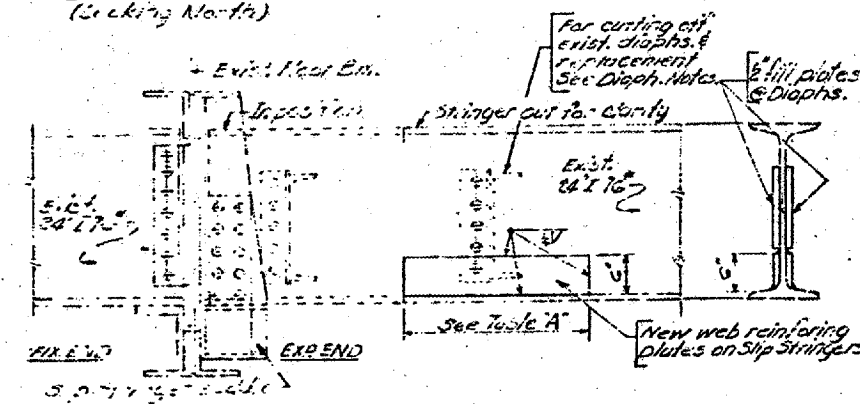


CROSS SECTION  
(Looking North)

TABLE 1

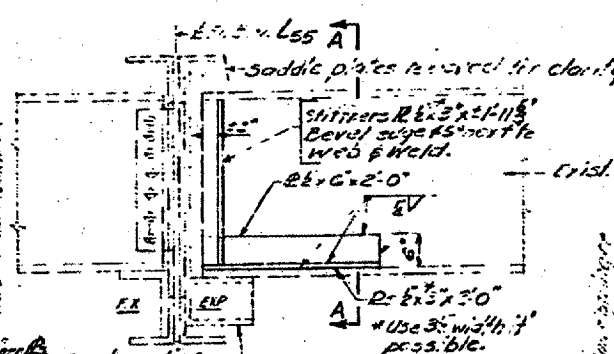
Location	Diaph. B.	End
L15	D2 & D3	BLS. #3
L23	D1, D3 & D4	BLS. #1 & #4
L47	D3 & D4	BLS. #4
L55	D2	BLS. #2
L79	D1 & D3	BLS. #1 & #3
L87	D2 & D3	BLS. #2

NOTE: For location of floor beams see sheet No. 1.  
Bolt plates shall be 3/8" x 6" x 1'-4" and 1/2" fill plates shall be 1/2" x 6" x 6".  
Locations as indicated by the E's.

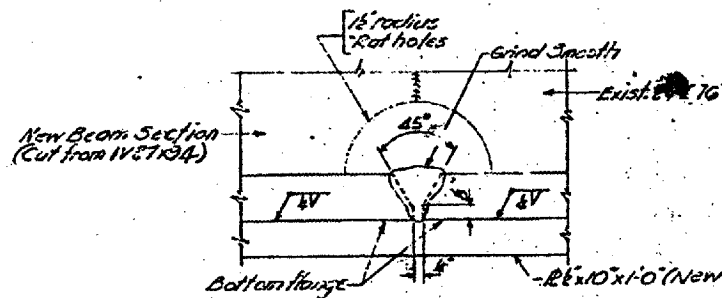
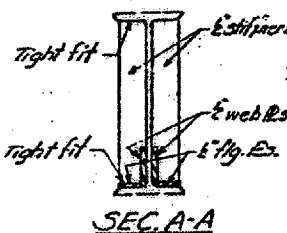


SLIP STRINGER WEB REPAIR

NOTE: For location see sheet No. 1 and for size TABLE A.



SLIP STRINGER FLANGE WEB REPAIR AT FLOOR BEAM L55



DETAIL A

Welding shall be in accordance with the Specifications for Welded Highway and Railway Bridge, D.2.0-63, AWS

BRIDGE NO. 1  
STRUCTURE 002-0005  
FOR INFORMATION ONLY

BRIDGE REPAIRS  
MISSISSIPPI RIVER BRIDGE AT CAIRO, ILL.  
ALEXANDER COUNTY