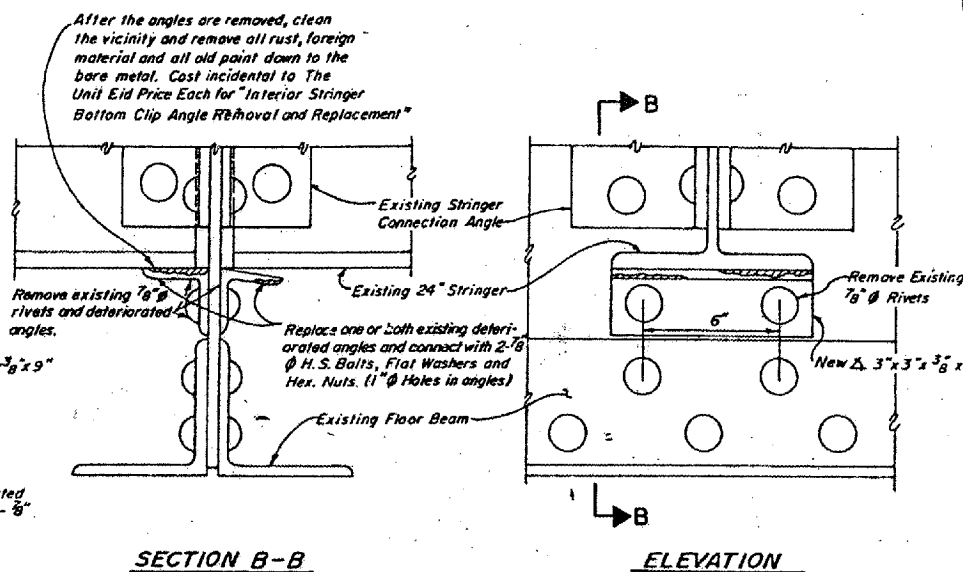
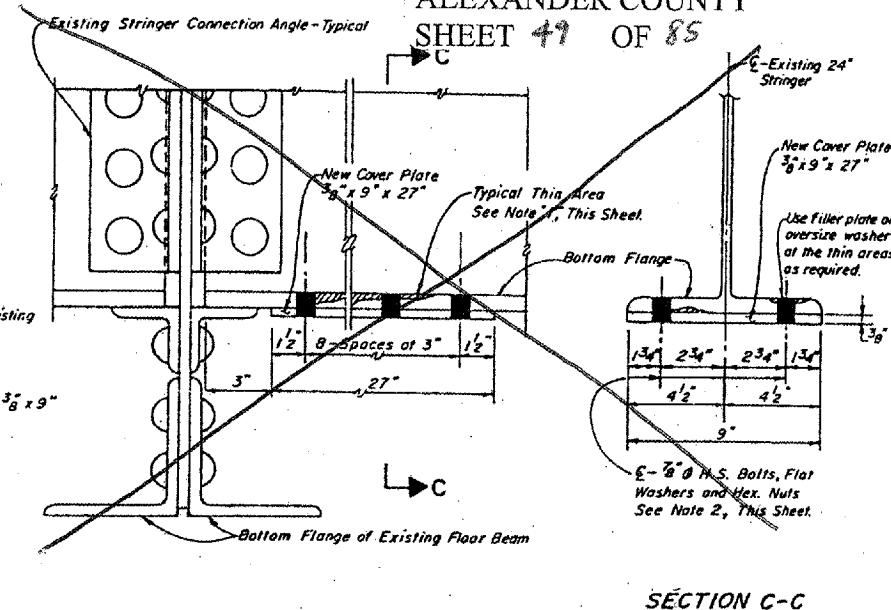


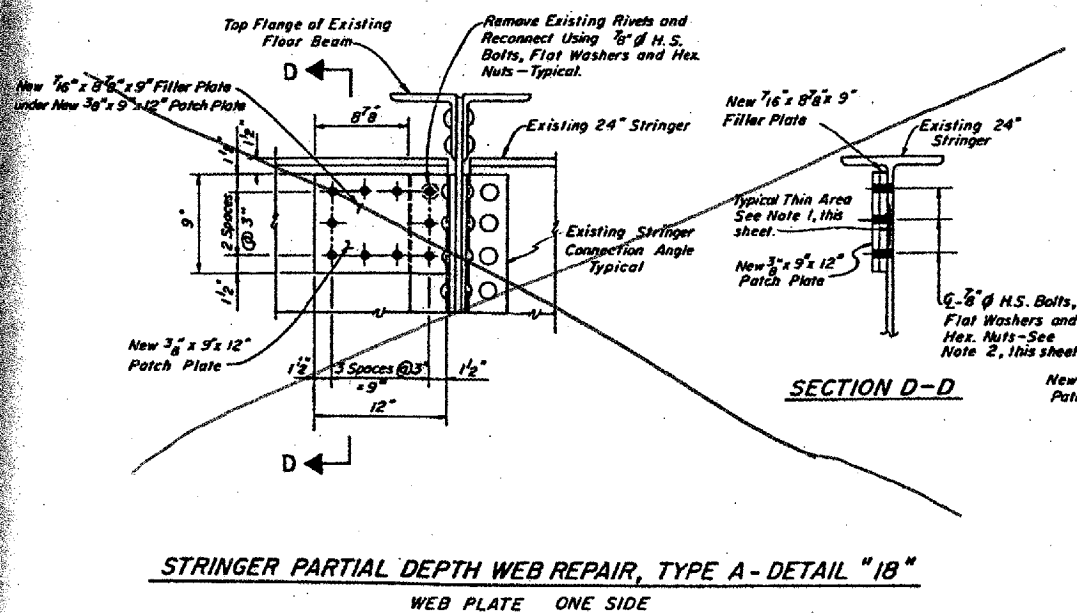
**SECTION A-A**  
**ELEVATION**  
**EXTERIOR STRINGER BOTTOM CLIP ANGLE REMOVAL AND REPLACEMENT - DETAIL "15"**



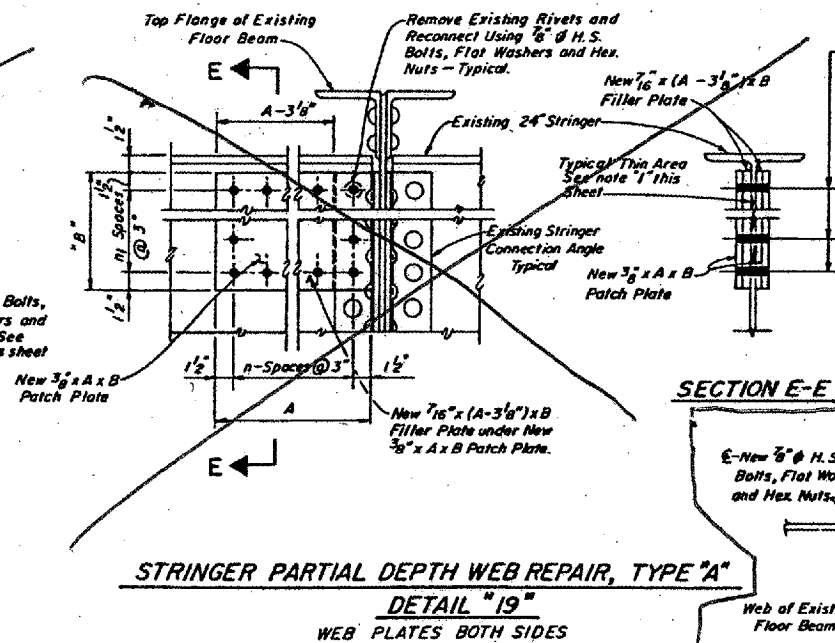
**SECTION B-B**  
**ELEVATION**  
**INTERIOR STRINGER BOTTOM CLIP ANGLE REMOVAL AND REPLACEMENT - DETAIL "16"**



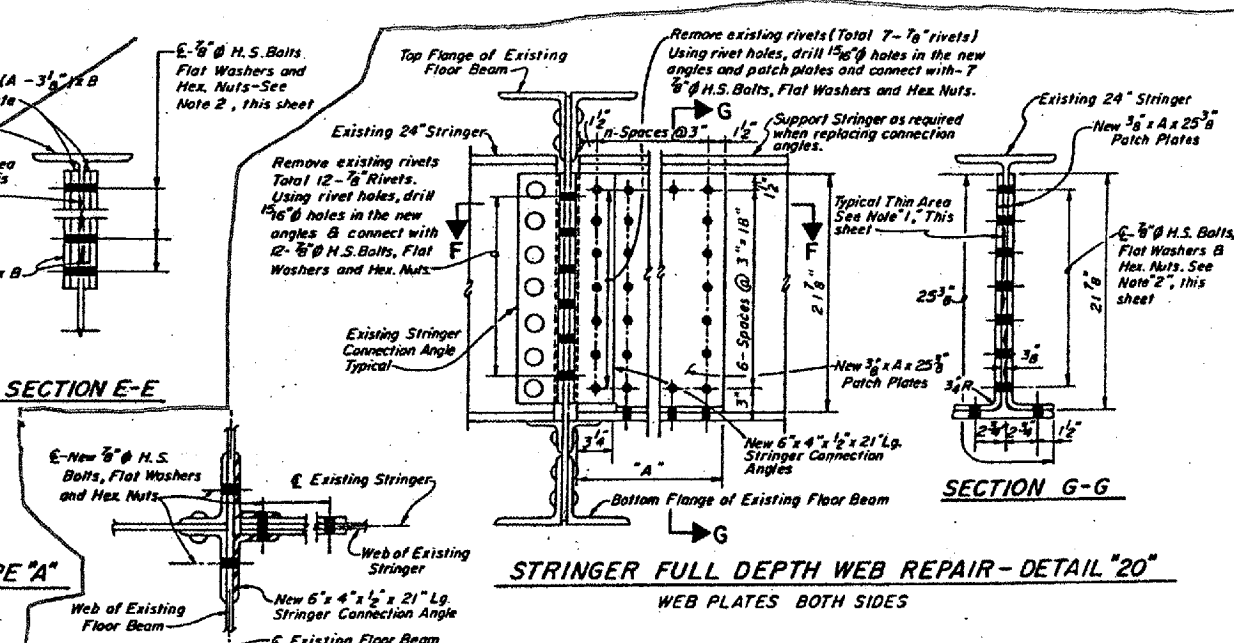
**SECTION C-C**  
**STRINGER BOTTOM FLANGE REPAIR - DETAIL "17"**



**SECTION D-D**  
**STRINGER PARTIAL DEPTH WEB REPAIR, TYPE A - DETAIL "18"**  
WEB PLATE ONE SIDE



**SECTION E-E**  
**STRINGER PARTIAL DEPTH WEB REPAIR, TYPE "A"**  
DETAIL "19"  
WEB PLATES BOTH SIDES



**SECTION F-F**  
**SECTION G-G**  
**STRINGER FULL DEPTH WEB REPAIR - DETAIL "20"**  
WEB PLATES BOTH SIDES

**NOTES:**

- Contractor to clean the thin area and remove all rust, foreign material and all old paint down to the bare metal.
- Filler plates of 3/8" minimum thickness shall be used at locations where connection bolts pass thru thin area of existing members.

DESIGNED	J. J. Smith
CHECKED	R. E. C.
DRAWN	J. E. Smith
CHECKED	R. E. C. - F. S.

BRIDGE NO. 1  
STRUCTURE 002-0005  
FOR INFORMATION ONLY

TRUSS SPANS  
STRINGER REPAIR DETAILS  
F.A.U.S. Rte. 9811 (U.S. 60 & 62)  
S.B.I. 150 SECTION 138D-BR  
ALEXANDER CO., IL. MISSISSIPPI CO., MO.  
STATION 28 + 13.08