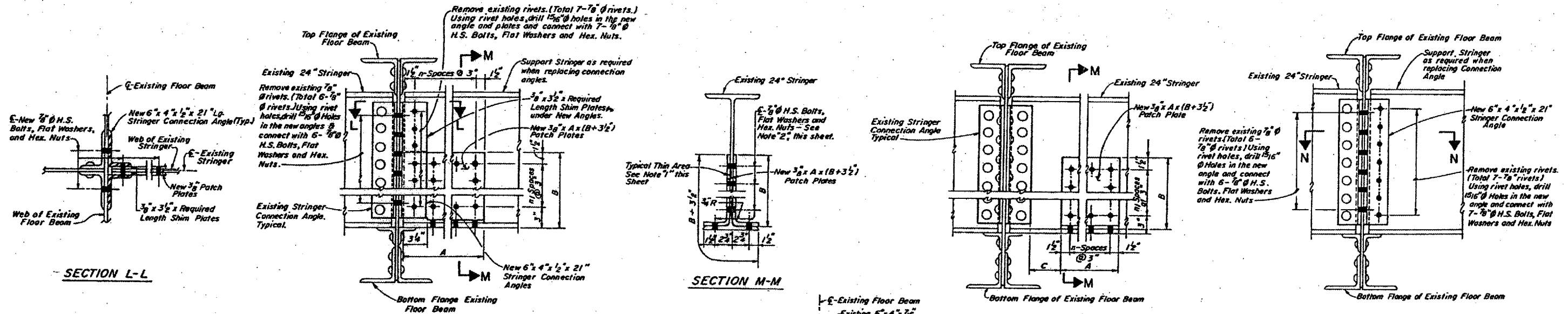


STRINGER FULL DEPTH WEB REPAIR - DETAIL "21"
WEB PLATE ONE SIDE

STRINGER PARTIAL DEPTH WEB REPAIR - TYPE "B" - DETAIL "22"
WEB PLATE ONE SIDE



STRINGER PARTIAL DEPTH WEB REPAIR - TYPE "B" - DETAIL "23"
WEB PLATES BOTH SIDES

STRINGER PARTIAL DEPTH WEB REPAIR - TYPE "C" - DETAIL "24"
WEB PLATES BOTH SIDES

STRINGER END CONNECTION REPAIR
DETAIL "25"

NOTES:

- Contractor to clean the thin area and remove all rust, foreign material and all old paint down to the bare metal.
- Filler plates of 3/8" minimum thickness shall be used at locations where connection bolts pass thru thin area of existing members.

DESIGNED	J. S. S.
CHECKED	R. E. C.
DRAWN	G. G.
CHECKED	R. E. C. F. S.

SECTION N-N

BRIDGE NO. 1
STRUCTURE 002-0005
FOR INFORMATION ONLY

TRUSS SPAN
STRINGER REPAIR DETAILS
F.A.U.S. Rte. 9811 (U.S. 60 & 62)
S.B.I. 150 SECTION 138D-BR
ALEXANDER CO., IL. MISSISSIPPI CO., MO.
STATION 28+13.08