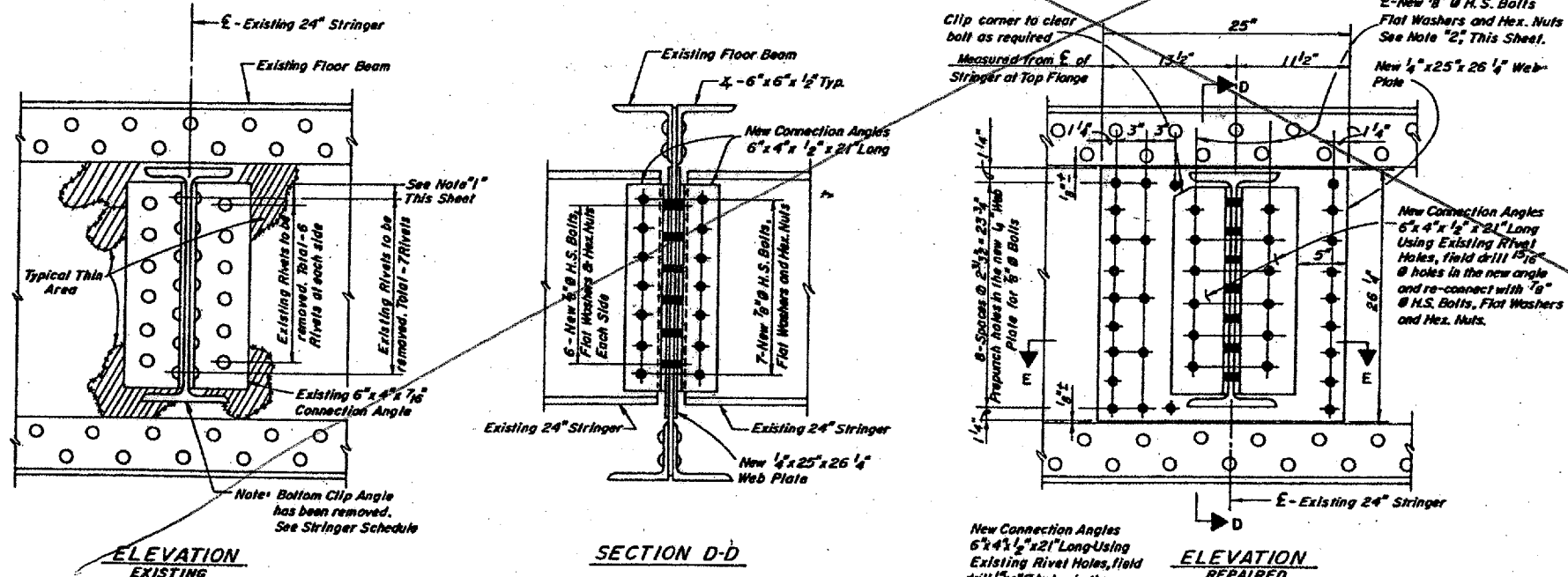


FLOOR BEAM BOTTOM FLANGE REPLACEMENT - DETAIL "12"

BILL OF MATERIAL

DESCRIPTION	DETAIL NO.	NO. OCCURRING	LOG UNIT	TOTAL QUANTITY
Floor Beam Top Flange Replacement, Type "A"	10	1	Lb.	560
Floor Beam Top Flange Replacement, Type "B"	11	1	Lb.	1020
Floor Beam Bottom Flange Replacement	12	1	Lb.	560
Floor Beam Full Length Bottom Flange Repair	13	9	Lb.	5620
Floor Beam Full Depth Web Repair	14	5	Lb.	3650

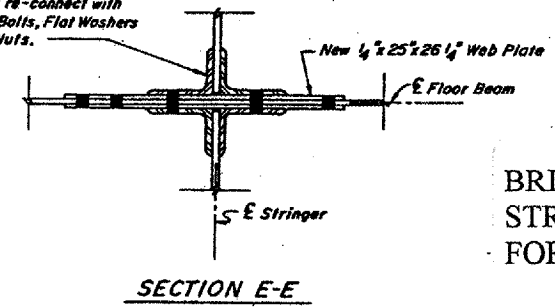


FLOOR BEAM FULL DEPTH WEB REPAIR - DETAIL "14"

LIST OF MATERIAL

DETAIL NO.	NO. PLACES OCCURRING	LIST OF MATERIAL PER LOCATION		
		PLATE	ANGLE	7/8" BOLT
10	1		1-6" x 6" x 1/2" x 23'-5"	94
11	1		2-6" x 6" x 1/2" x 23'-5"	94
12	1		1-6" x 6" x 1/2" x 23'-5"	94
13	9	1-5" x 12" x 21'-0"		84
14	5	2- 1/4" x 25" x 26' 1/4"	4-6" x 4" x 1/2" x 21"	51

- NOTES:**
- Support existing stringers at either side of the floor beam and remove the existing 7/8" diameter rivets connecting the stringers to the floor beam and the connection angles to the stringer. Clean the thin area and remove all rust, foreign material and all old paint down to the bare metal. (Cost incidental)
 - Filler plates of 3/8" min. thickness shall be used at locations where connection bolts pass thru thin area of existing members.
 - Work This Sheet with Sheets 43 and 44.



SECTION E-E

BRIDGE NO. 1
STRUCTURE 002-0005
FOR INFORMATION ONLY

TRUSS SPAN:
FLOOR BEAM REPAIR DETAIL
F.A.U.S. Rte. 9811 (U.S. 60 & 62)
S.B.I. 150 SECTION 138D-BR
ALEXANDER CO., IL. MISSISSIPPI CO., MO.
STATION 28 + 13.08

DESIGNED	J. J. J.
CHECKED	R.E.G.
DRAWN	G.P.L.
CHECKED	R.E.G. - F.S.