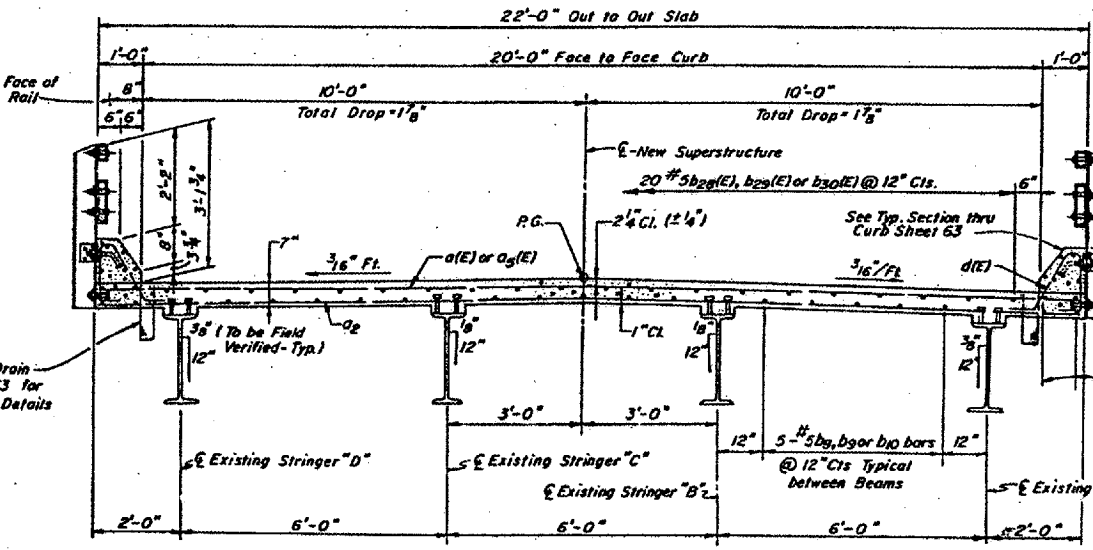


- NOTES:**
- 1- See sheets 63 & 64 for Details and Bill of Material.
 - 2- Reinforcement Bars designated (E) shall be Epoxy Coated. See Special Provisions.
 - 3- The Rail Post spacing given provides a total of 3 Posts per Truss Panel, two of which are short posts (one either side of E Floor Beam) and one is a longer post of approximate $\frac{1}{2}$ of Panel. The longer post is provided to support a continuous Truck Rail that extends to the limits of the Main Truss and is for the purpose of protecting the Truss Members. Truss Span Railing shall be paid for by The Unit Bid Price per Lin. Ft. for "Steel Railing Type T-1 Modified with Truck Rail." See Railing Details sheet 72 & Special Provisions.
 - 4- Vary last curb bar space at joint as required to clear joint, blackout, etc.
 - 5- See Sheet 62 for Sections I-I & K-K.
 - 6- Replace Existing Slip Stringer Panel, See Details, Sheets 69 & 70.
 - 7- For Deck Drain Spacing & Details, See Sheet 63.

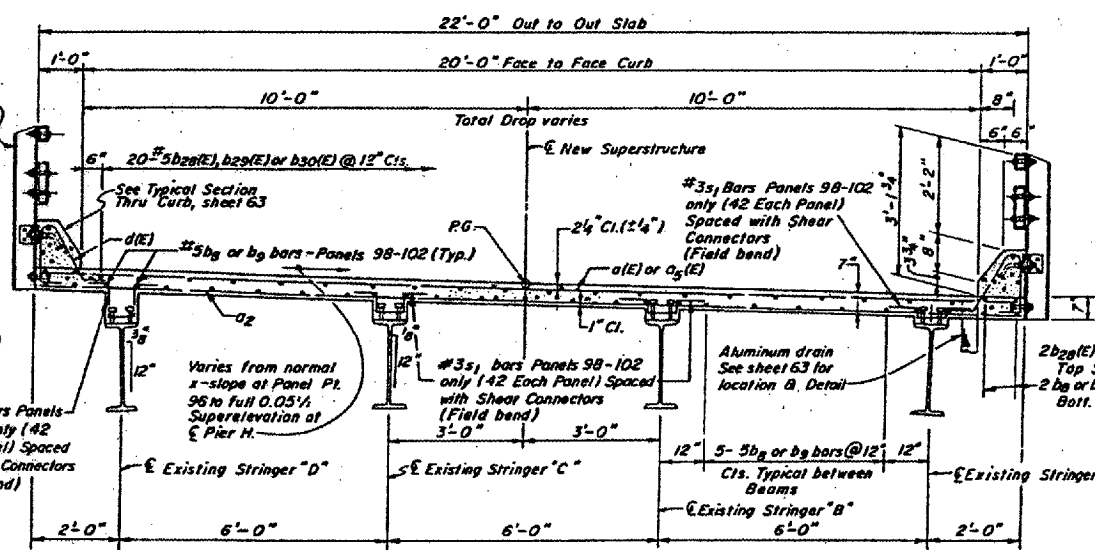
PANELS 36 THRU 40 PANELS 41 THRU 46 PANEL 47 (TYPE II PANEL) PANEL 48 (TYPE I PANEL) PANELS 49 THRU 51 (TYPE III PANEL)

PLAN PANELS 36 THRU 51



SECTION THRU NEW DECK
TYPICAL PANELS 1-96
(LOOKING AHEAD)

BRIDGE NO. 1
STRUCTURE 002-0005
FOR INFORMATION ONLY



SECTION THRU NEW DECK
TYPICAL PANELS 97-102
(LOOKING AHEAD)

TRUSS SPANS DEC. PLANS
CONCRETE FLOOR ALTERNATE
F.A.U.S. Rte. 9811 (U.S. 60 & 62)
S.B.I. 150 SECTION 138D-BR
ALEXANDER CO., IL. MISSISSIPPI CO., MO.
STATION 28+13.08

DESIGNED	W. J. ...
CHECKED	R. E. C.
DRAWN	R. E. C.
CHECKED	R. E. C. - F. J.