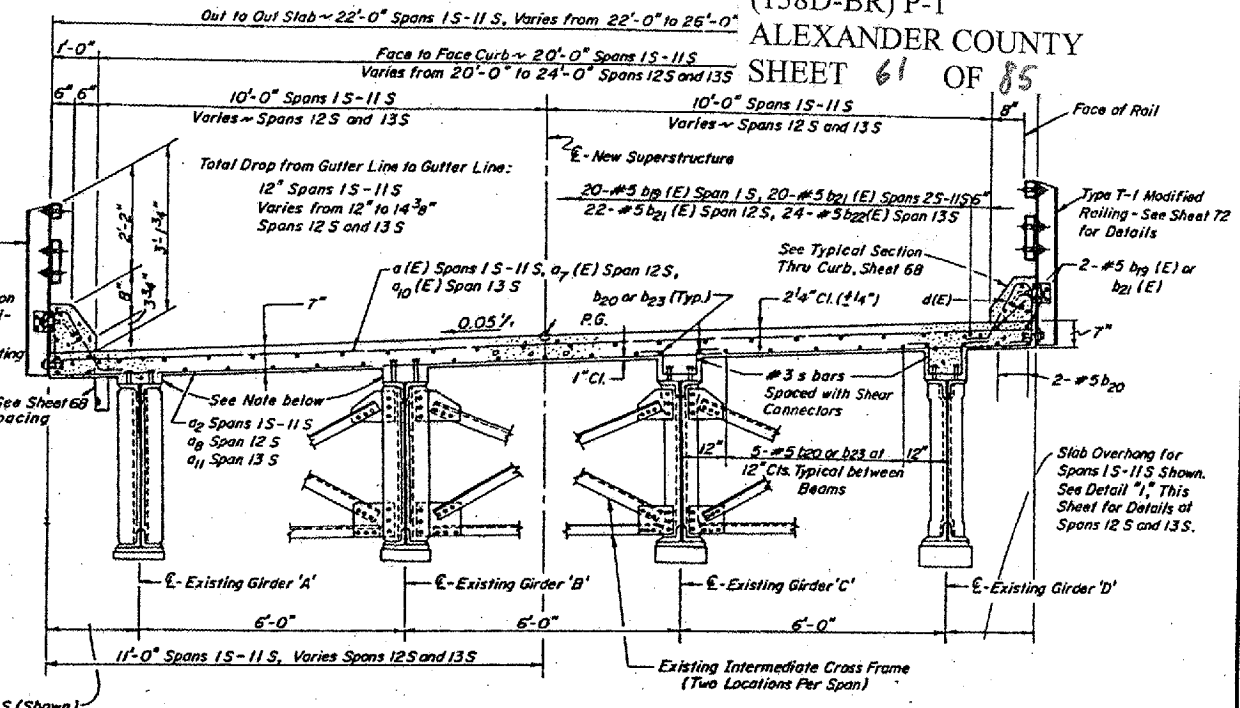
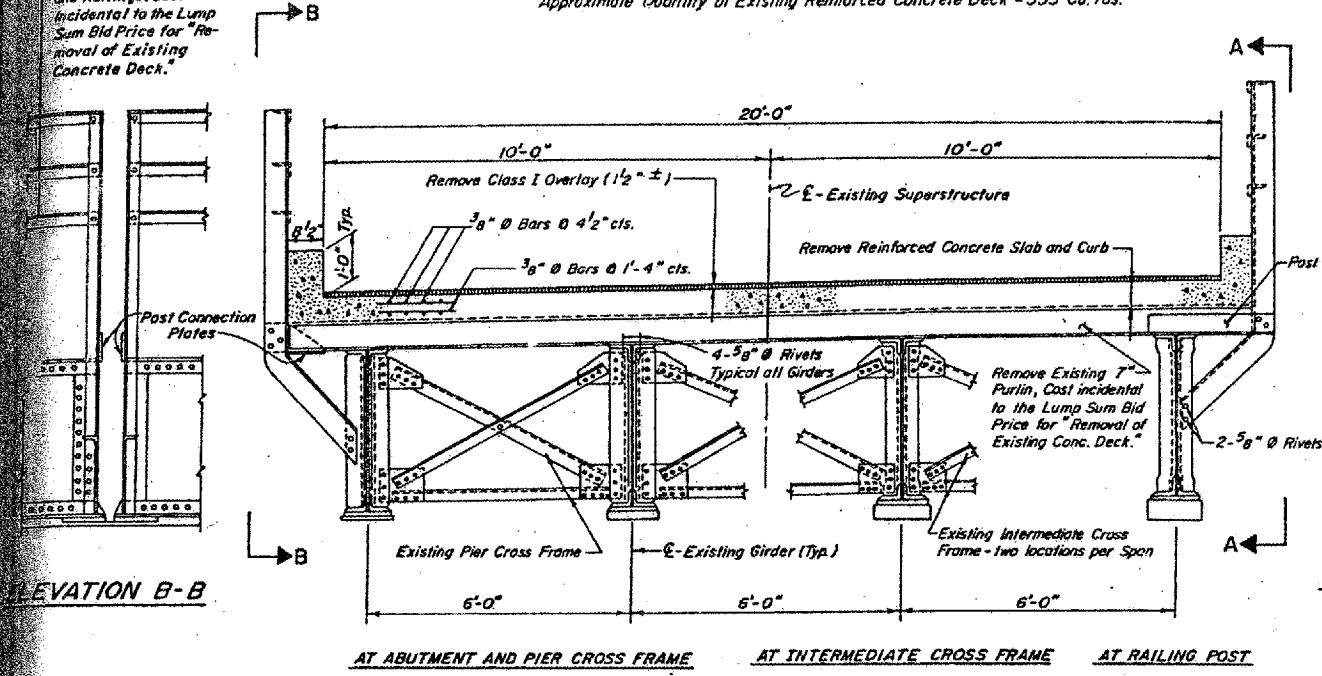


MISSOURI APPROACH SPANS:
Total Number of Existing Purlins = 286
Total Number of Existing Rail Posts (Both Sides) = 234
Approximate Quantity of Existing Reinforced Concrete Deck = 355 Cu. Yds.

Remove Posts, Post Connection Plates and Railings. Cost incidental to the Lump Sum Bid Price for "Removal of Existing Concrete Deck."

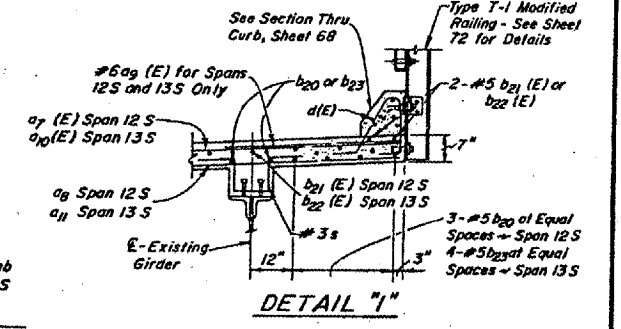


SECTION THRU EXISTING DECK

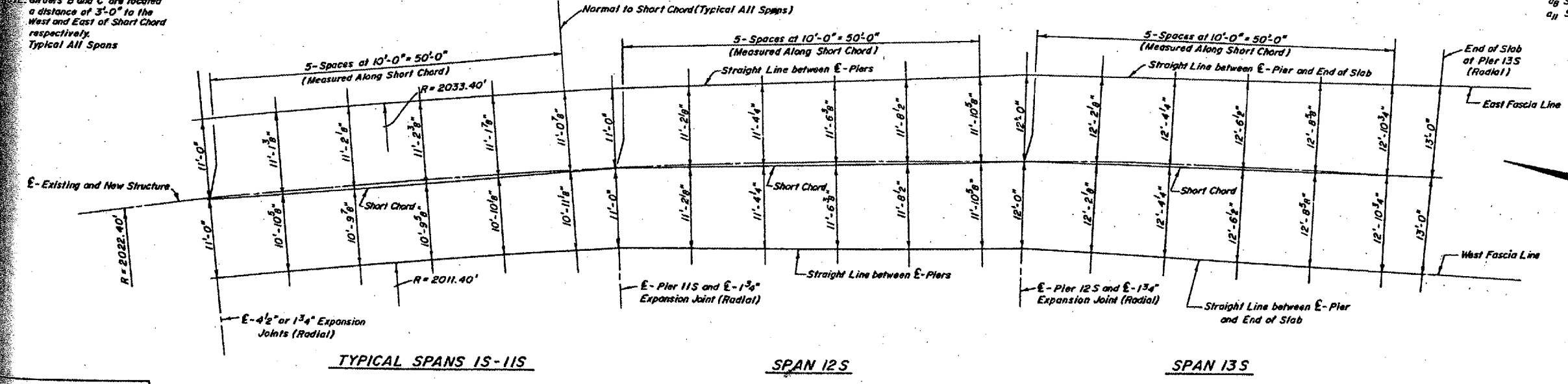
SECTION THRU NEW DECK (LOOKING NORTH)

2'-0" Spans 1S-11S (Shown) Varies from 2'-0" at E-Pier 11S to 4'-0" at End of Slab at Pier 13S for Spans 12S and 13S. Typical Both Fascias - See Fascia Offset below.

NOTE: Shallow haunches shown. See Layout, Sheet 65 & Shear Connector Details, Sheet 67 for s, b20 & b23 requirements at Girders A' & B' with deep haunches.



NOTE: Girders 'B' and 'C' are located a distance of 3'-0" to the West and East of Short Chord respectively. Typical All Spans



TYPICAL SPANS 1S-11S

SPAN 12S

SPAN 13S

FASCIA OFFSET FROM SHORT CHORD

DESIGNED	<i>Chen</i>
CHECKED	<i>P.F.C.</i>
DRAWN	<i>Chen</i>
CHECKED	<i>P.F.C. - F.S.</i>

BRIDGE NO. 1
STRUCTURE 002-0005
FOR INFORMATION ONLY

MISSOURI APPROACH 5
DECK SECTIONS
CONCRETE FLOOR ALTERNATE
F.A.U.S. Rte. 9811 (U.S. 60 & 52)
S.B.I. 150 SECTION 138D-BR
ALEXANDER CO., IL. MISSISSIPPI CO., MO.
STATION 28+13.08