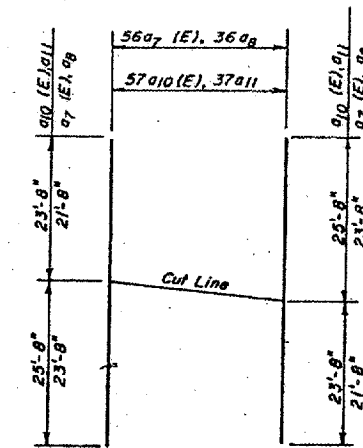
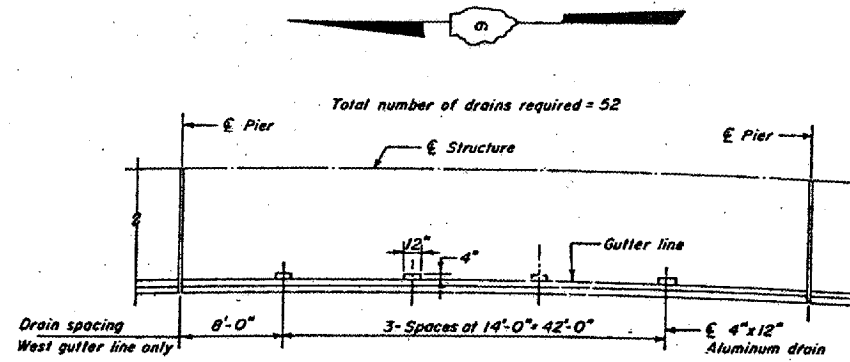
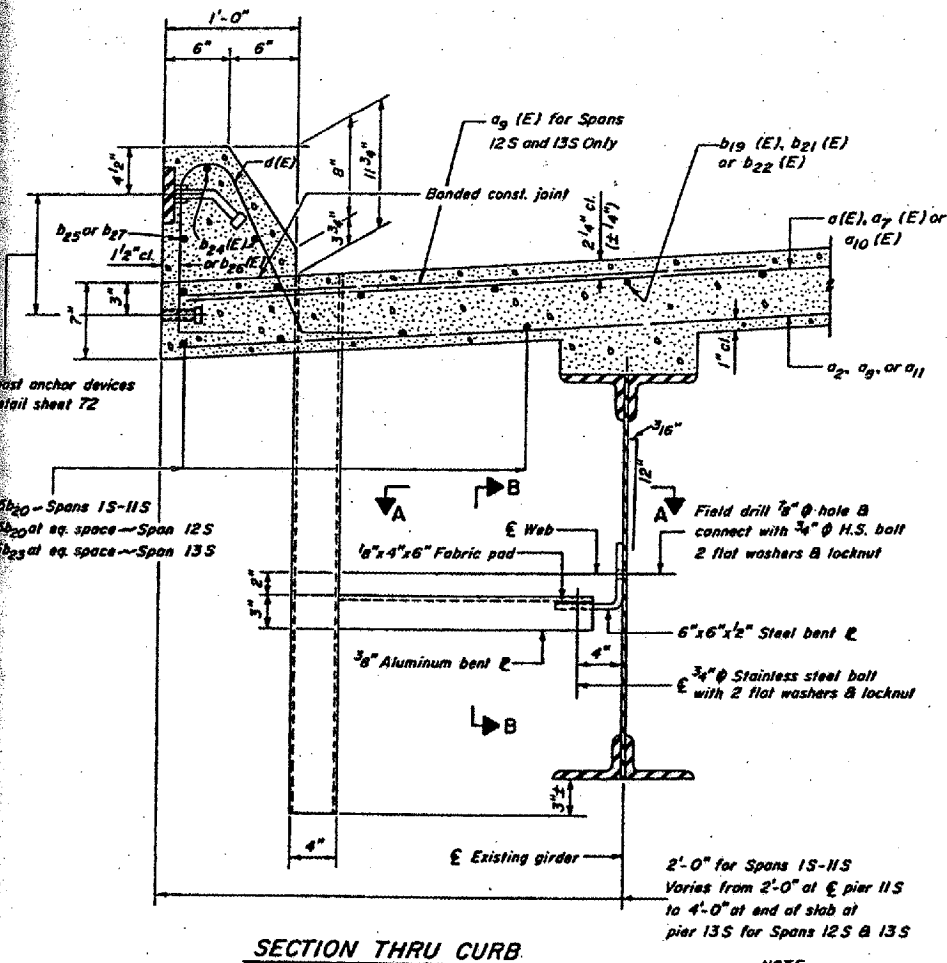
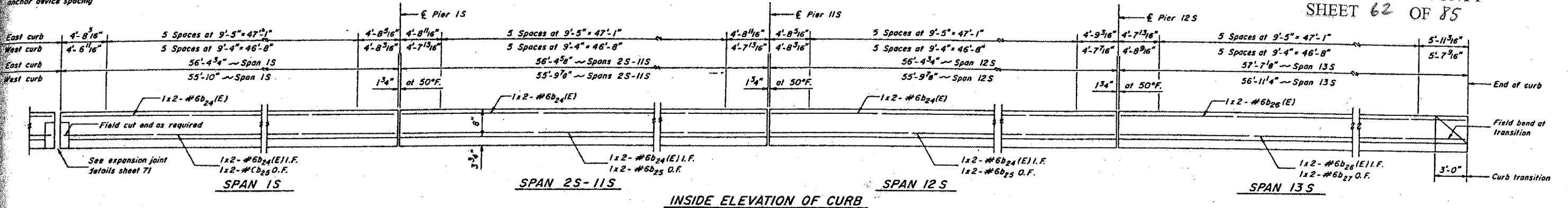
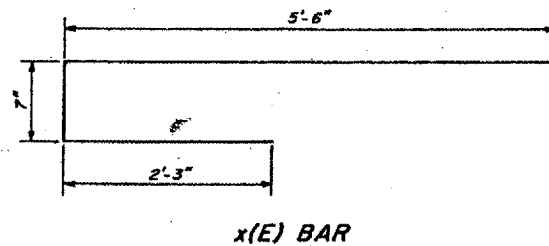
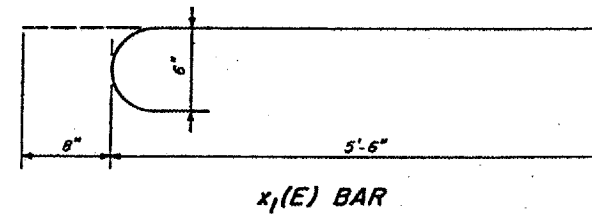
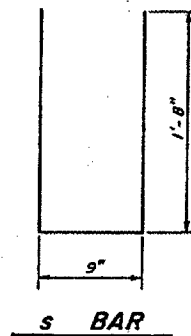


Rail posts & rail post
anchor device spacing



BILL OF MATERIAL

BAR	NUMBER				TOTAL	SIZE	LENGTH	SHAPE	
	SPAN 1 S	SPAN 2S-11S	SPAN 12 S	SPAN 13 S					
a ₁ (E)	116	1120			1236	#5	21'-8"		
a ₂	74	720			794	#5	21'-8"		
a ₄	5		10		115	#6	18'-8"		
a ₇ (E)			56		56	#5	45'-4"		
a ₈			36		36	#5	45'-4"		
a ₉ (E)			122	126	248	#6	6'-0"		
a ₁₀ (E)				57	57	#5	49'-4"		
a ₁₁				37	37	#5	49'-4"		
a ₁₂ (E)			5	5	10	#7	23'-8"		
a ₁₃ (E)				6	6	#7	25'-8"		
a ₁₄				5	5	#6	25'-8"		
b ₁₉ (E)	48				48	#5	28'-7"		
b ₂₀	54	460	54		568	#5	29'-1"		
b ₂₁ (E)		480	52		532	#5	29'-1"		
b ₂₂ (E)				56	56	#5	29'-8"		
b ₂₃				58	58	#5	29'-8"		
b ₂₄ (E)	8	80	8		96	#6	29'-5"		
b ₂₅	4	40	4		48	#6	29'-5"		
b ₂₆ (E)				8	8	#6	30'-0"		
b ₂₇				4	4	#6	30'-0"		
d(E)	113	1130	113	115	1471	#4	3'-10"		
s	244	1220	183	183	1830	#3	4'-1"		
x ₁ (E)	37	607	60	60	764	#6	8'-4"		
x ₁ (E)	30				30	#6	6'-2"		
Reinforcement Bars								Pound	49,100
Reinforcement Bars (Epoxy Coated)								Pound	79,020
Class X Concrete								Cu. Yd.	462.4
Floor Drains								Each	52
Furnishing and Erecting Structural Steel								Pound	7,740
Shear Connectors 3/4" φ								Each	6,344
Preformed Joint Seal 2 1/2"								Lin. Ft.	262



BRIDGE NO. 1
STRUCTURE 002-005
FOR INFORMATION ONLY

MISSOURI APPROACH
DECK DETAIL
CONCRETE FLOOR ALTERNATE
F.A.U.S. Rte. 9811 (U.S. 60 & 62)
S.B.I. 150 SECTION 138D-BR
ALEXANDER CO., IL. MISSISSIPPI CO., MO
STATION 28+13.08

DESIGNED: *h*
CHECKED: R.F.C.
DRAWN: brb
CHECKED: R.F.C.-F.S.