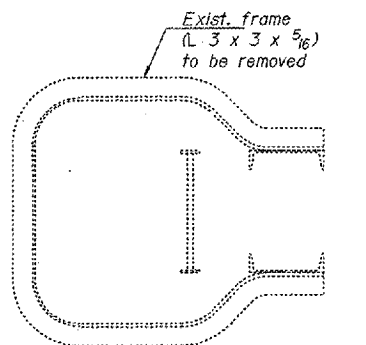
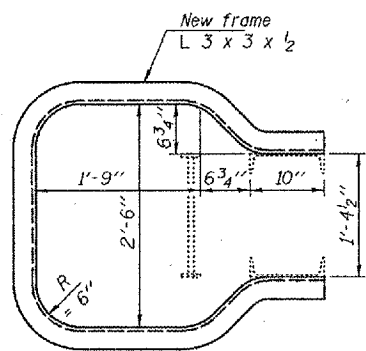


REPAIR 10
SAFETY LOOP ANGLE REPAIR
Typ. each truss

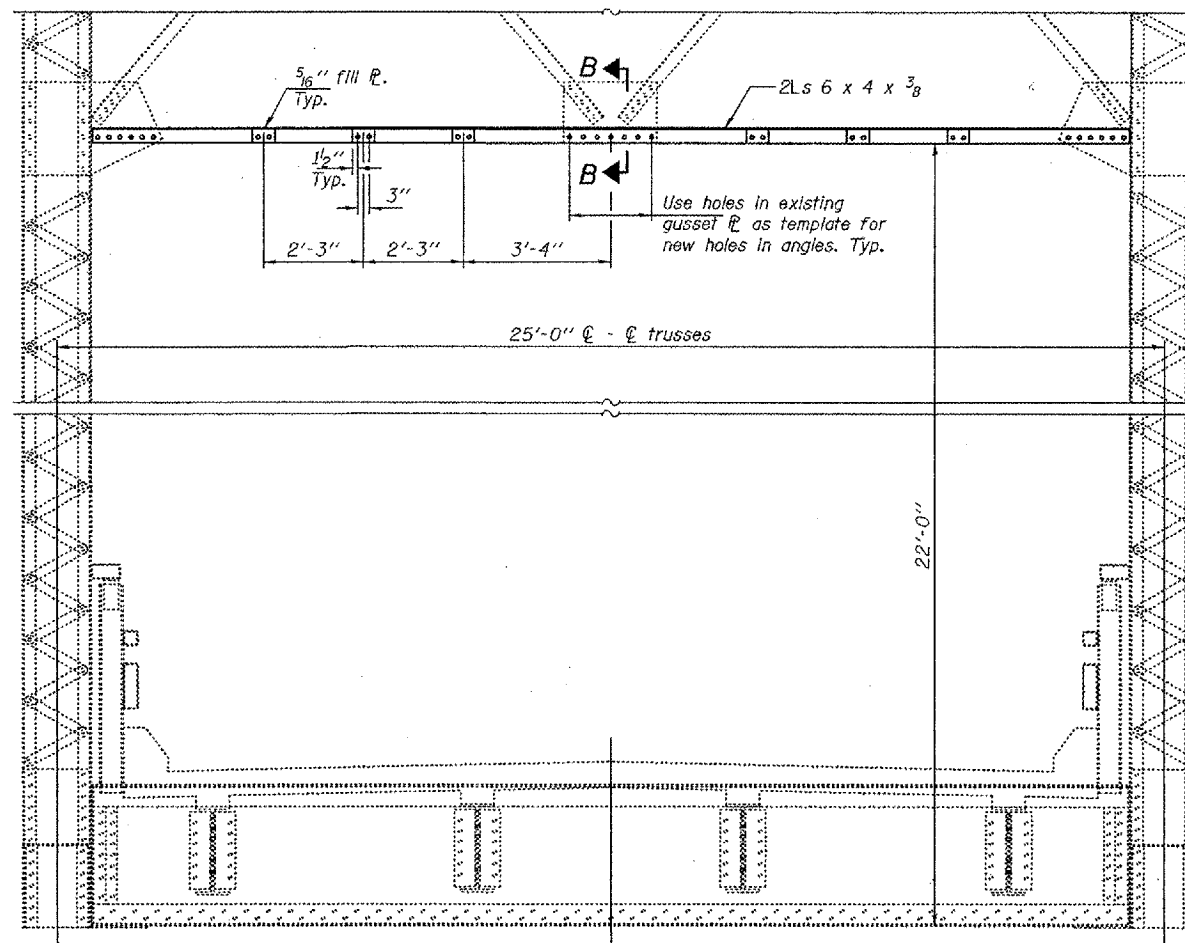


Existing

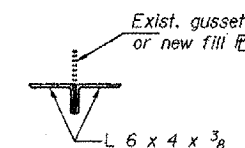


Proposed

SECTION A-A



REPAIR 11
CROSS SECTION
STRUT REPAIR AT PANEL POINT 66



SECTION B-B

REPAIR 4

Broken/Missing rivets at the following locations shall be replaced with 3/4" φ HS bolts.
Location/No. required:
Stringer A-FB 5 connection angle/2
West truss, floorbeam 8 conn. C/14
Stringer D-FB 48 connection angle/1
East truss, floorbeam 51 conn. C/8
Cost included with Structural Steel Repair.

REPAIR 5

The 2 missing bolts at the rail post connection, on the West truss, between panel points 5 & 6 shall be replaced with 1/2" φ x 6" round head bolts with locknuts and flat washers.
Cost included with Structural Steel Repair.

DESIGNED	DAB
CHECKED	JSB
DRAWN	ballva
CHECKED	DAB JSB

MARCH 14, 2005
EXAMINED *John A. Morris*
ENGINEER OF STRUCTURAL SERVICES
PASSED *Ralph E. Anderson*
ENGINEER OF BRIDGES AND STRUCTURES

BRIDGE NO. 1
STRUCTURE 002-0005
FOR INFORMATION ONLY

BRIDGE REPAIRS
OLD CAIRO BRIDGE OVER MISSISSIPPI RIVER
FAS RTE. 944 (US 60 & 62)
SEC. (138D-BR)I-5
ALEXANDER COUNTY
SN 002-0005