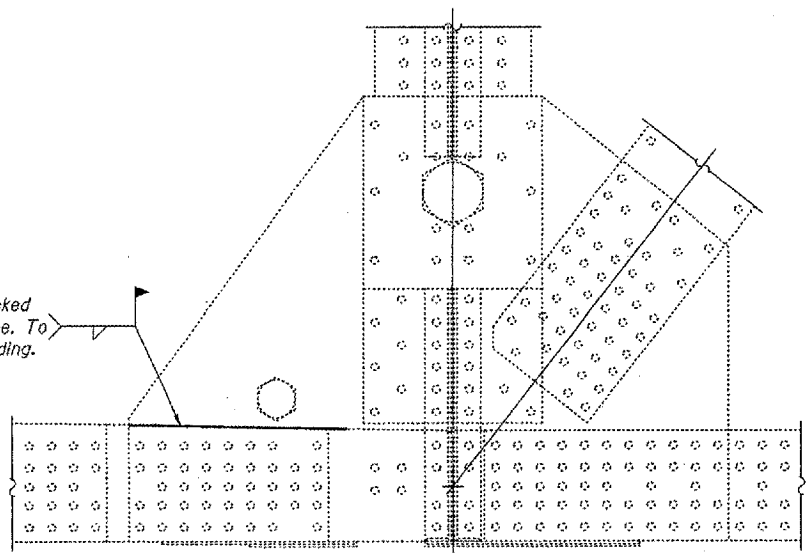


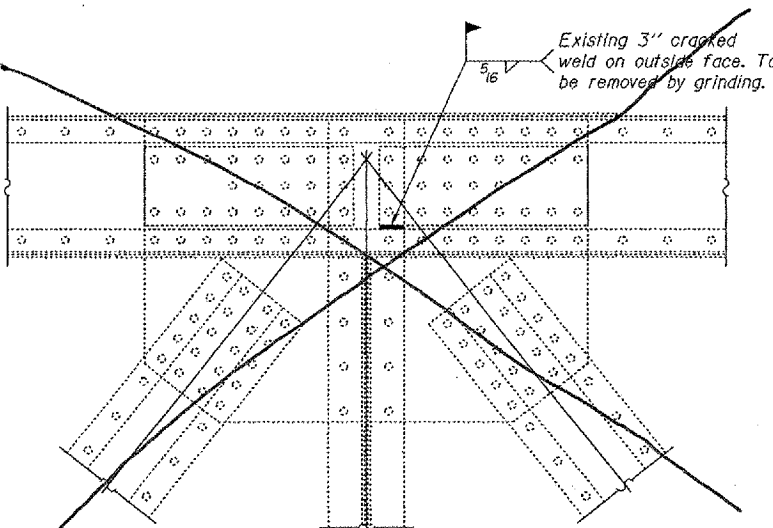
STATE OF ILLINOIS
DEPARTMENT OF TRANSPORTATION

CONTRACT 98939
U.S. RTE. 60 & U.E. RTE. 62
(138D-BR) P-1
ALEXANDER COUNTY
SHEET 84 OF 85

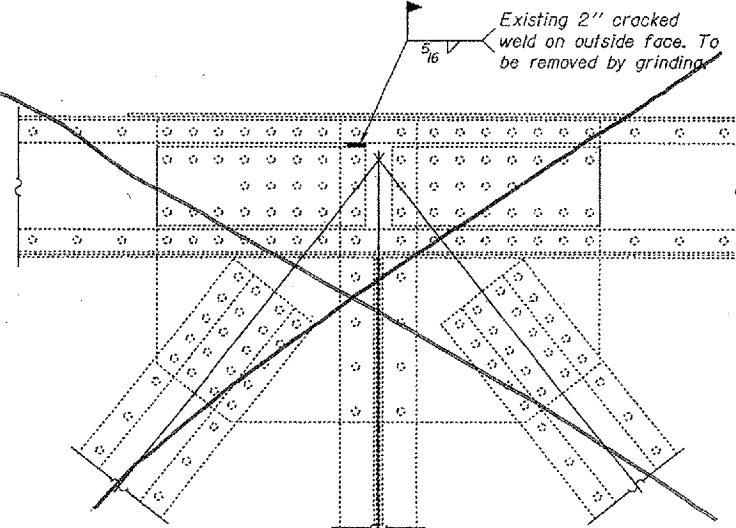
Existing 2 9/16" cracked
weld on outside face. To
be removed by grinding.



L55
REPAIR 12



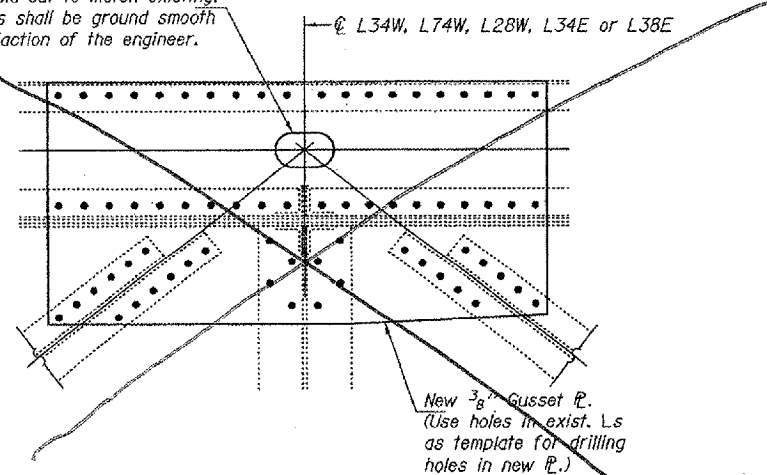
U80W
INSIDE FACE



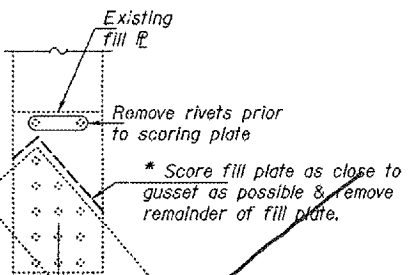
REPAIR 12
OUTSIDE FACE

Note:
The cost of weld removal &
field welding is included with
Structural Steel Repair.

Handhole. Field cut to match existing.
All cut edges shall be ground smooth
to the satisfaction of the engineer.



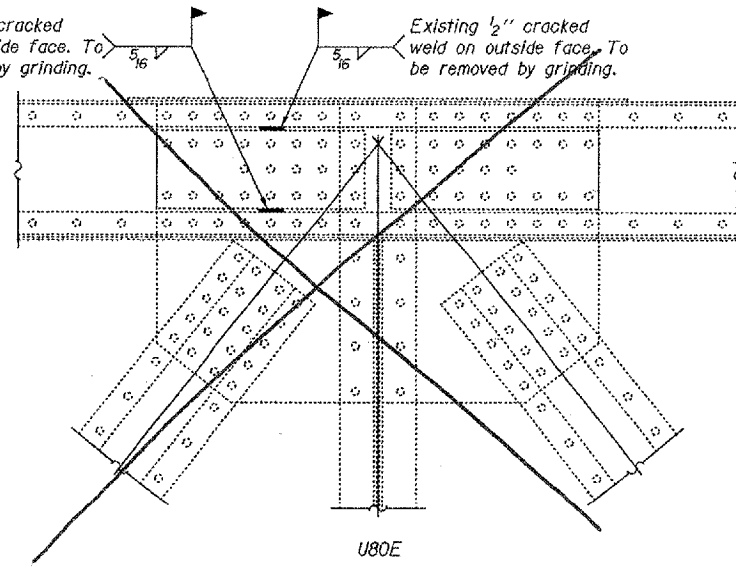
GUSSET PLATE REPAIR
REPAIR 14



@ U39E-L39E, U39W-L39W,
U41E-L41E, U41W-L41W,
U61E-L61E, U61W-L61W,
U63W-L63W or U63E-L63E

REPAIR 13

Existing 4" cracked
weld on outside face. To
be removed by grinding.



U80E
INSIDE FACE
REPAIR 12

* Care shall be taken not to damage any
truss members during the removal process.

DESIGNED	DAB
CHECKED	JSB
DRAWN	ballva
CHECKED	DAB JSB

MARCH 14, 2005
EXAMINED *John A. Moris*
ENGINEER OF STRUCTURAL SERVICES
PASSED *Ralph E. Anderson*
ENGINEER OF BRIDGES AND STRUCTURES

BRIDGE NO. 1
STRUCTURE 002-0005
FOR INFORMATION ONLY

BRIDGE REPAIRS
OLD CAIRO BRIDGE OVER MISSISSIPPI RIVER
FAS RTE. 944 (US 60 & 62)
SEC. (138D-BR)I-5
ALEXANDER COUNTY
SN 002-0005