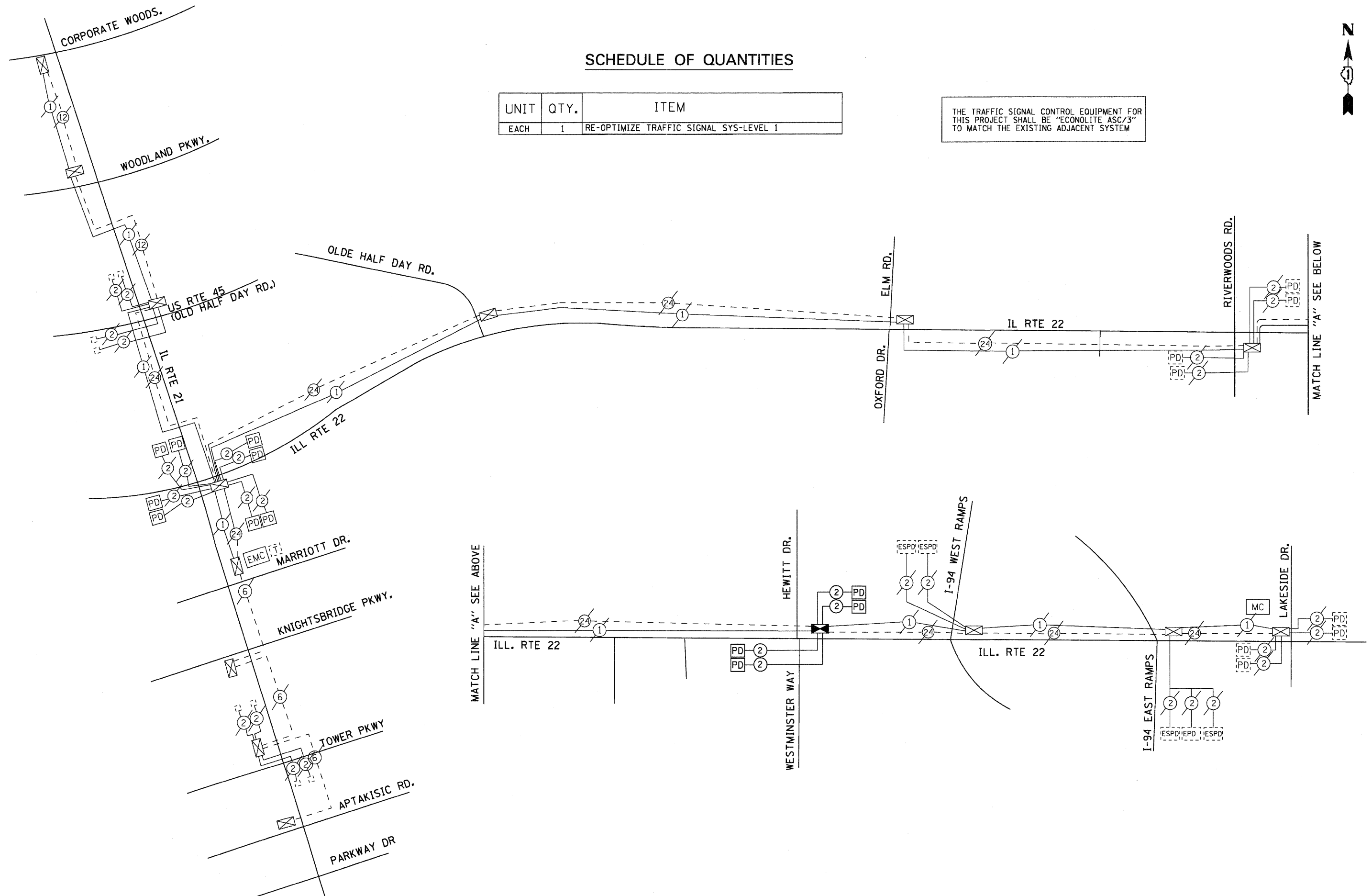


SCHEDULE OF QUANTITIES

UNIT	QTY.	ITEM
EACH	1	RE-OPTIMIZE TRAFFIC SIGNAL SYS-LEVEL 1

THE TRAFFIC SIGNAL CONTROL EQUIPMENT FOR THIS PROJECT SHALL BE "ECONOLITE ASC/3" TO MATCH THE EXISTING ADJACENT SYSTEM



FILE NAME = k:\projects\11020\design\sheet_files\1122\wlntsch.dgn	USER NAME = #USER#	DESIGNED - JDH	REVISED -	STATE OF ILLINOIS DEPARTMENT OF TRANSPORTATION	IL ROUTE 22 (HALF DAY RD) AT WESTMINSTER WAY / HEWITT RD INTERCONNECT SCHEMATIC		F.A. RTE. 337	SECTION	COUNTY LAKE	TOTAL SHEETS 18	SHEET NO. 13	
	PLOT SCALE = #SCALE#	DRAWN - JDH	REVISED -		SCALE: NTS	SHEET NO. 2 OF 2 SHEETS	STA.	TO STA.	CONTRACT NO. 60L19			
	PLOT DATE = 4/13/2011	CHECKED - DW	REVISED -		ILLINOIS FED. AID PROJECT							
		DATE -	REVISED -									