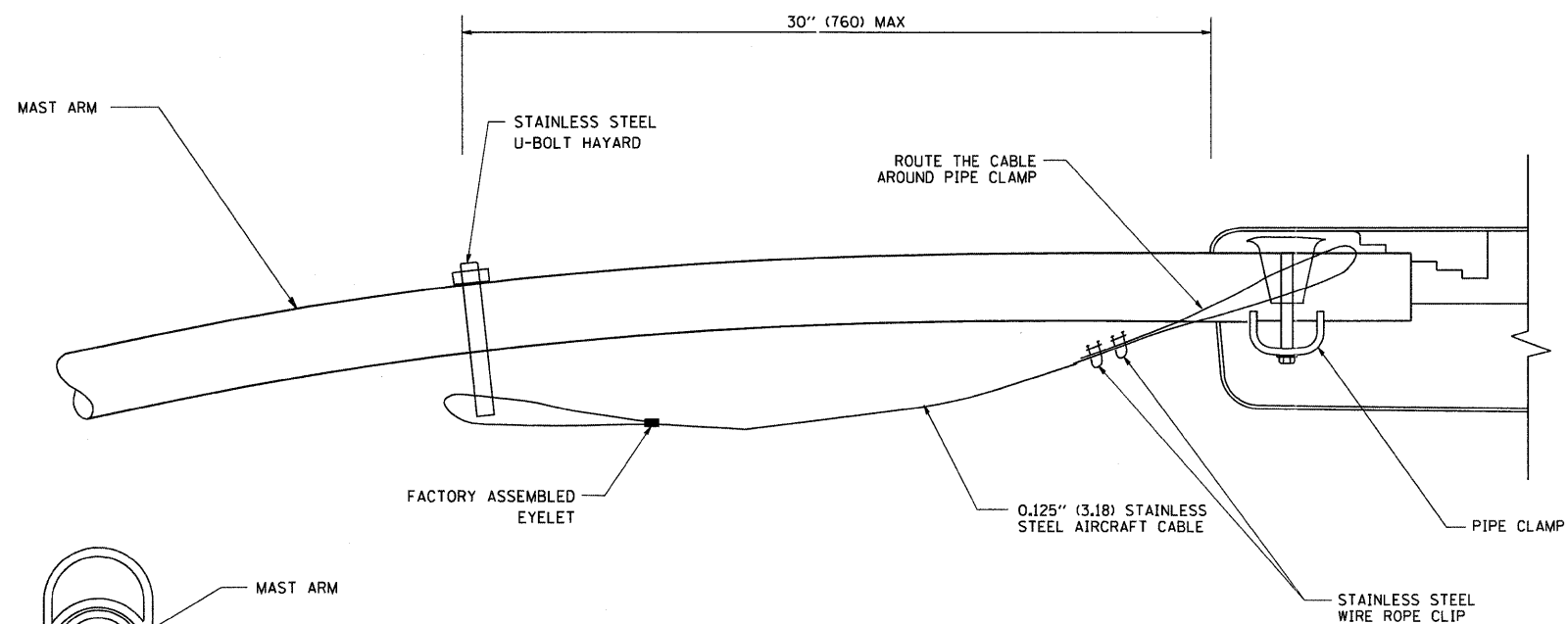
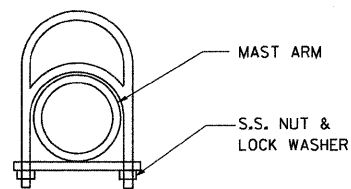


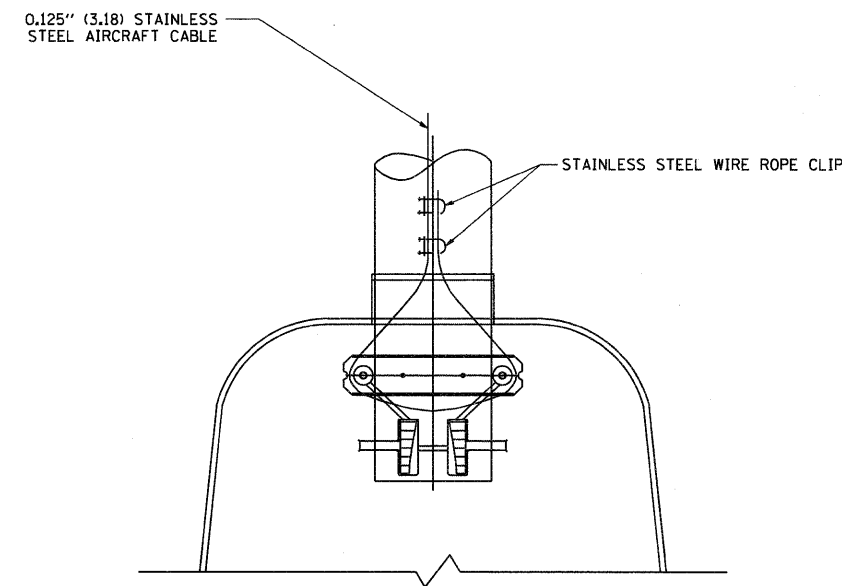
**SIDE VIEW (TRUSS ARM)**  
N.T.S.



**SIDE VIEW (SINGLE MEMBER OR DAVIT ARM)**  
N.T.S.



STAINLESS STEEL  
U-BOLT HAYARD



**BOTTOM VIEW**  
N.T.S.

**NOTES:**

1. ALL DIMENSIONS ARE IN MILLIMETERS (INCHES) UNLESS OTHERWISE SHOWN.
2. CONTRACTOR SHALL ADJUST THE WIRE CLIP TO ELIMINATE ANY SLACK FROM THE WIRE ROPE.
3. THE 0.125" (3.18) STAINLESS STEEL AIRCRAFT CABLE SHALL REMAIN VISIBLE FROM THE GROUND LEVEL.
4. THE BREAKING STRENGTH OF THE CABLE SHALL BE 1700 LBS. MIN.

|  |                          |  |  |          |   |  |             |      |        |                     |                   |   |                       |                    |
|--|--------------------------|--|--|----------|---|--|-------------|------|--------|---------------------|-------------------|---|-----------------------|--------------------|
| FILE NAME =<br>W:\diststd\22x34\be701.dgn          | USER NAME =<br>geg10nabt | DESIGNED -<br>DRAWN -<br>CHECKED -<br>DATE - | REVISED -<br>REVISED -<br>REVISED -<br>REVISED - | 08-08-03 | <b>STATE OF ILLINOIS<br/>DEPARTMENT OF TRANSPORTATION</b> | <b>LUMINAIRE SAFETY CABLE ASSEMBLY</b> |             |      |        | F.A.<br>RTE.<br>337 | SECTION<br>20-N-4 | COUNTY<br>LAKE                                      | TOTAL<br>SHEETS<br>18 | SHEET<br>NO.<br>17 |
| PLOT SCALE = 50,000' / IN.<br>PLOT DATE = 1/4/2008 |                          | DATE -                                       | REVISED -  |          |   | SCALE: NONE                            | SHEET NO. 1 | OF 1 | SHEETS | STA.                | TO STA.           | FED. ROAD DIST. NO. 1   ILLINOIS   FED. AID PROJECT |                       |                    |