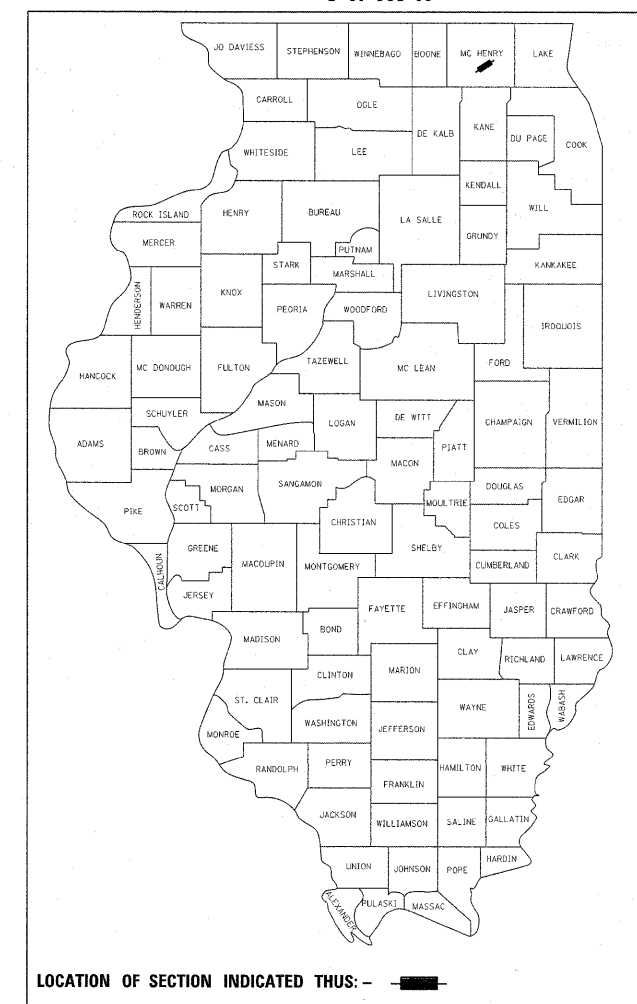


F.A.P. RTE.	SECTION	COUNTY	TOTAL SHEETS	SHEET NO.
333	15-N-6	MC HENRY	67	1
		ILLINOIS	CONTRACT NO. 60L27	

#67+3=70

D-91-663-10



STATE OF ILLINOIS  
DEPARTMENT OF TRANSPORTATION  
DIVISION OF HIGHWAYS

**PROPOSED  
HIGHWAY PLANS**

FAP 333: IL. RTE. 120 (MCHENRY AVENUE)  
AT FLEMING ROAD  
SECTION 15-N-6  
INTERSECTION IMPROVEMENT AND  
NEW TRAFFIC SIGNAL INSTALLATION  
PROJECT: NHF-0333(015)  
MCHENRY COUNTY  
C-91-663-10

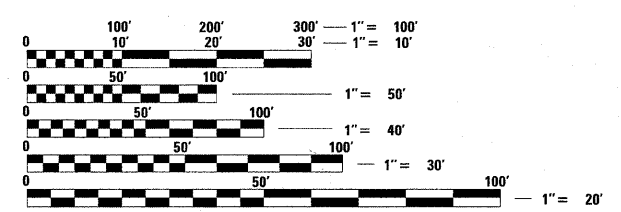
FOR INDEX OF SHEETS, SEE SHEET NO. 2

PROJECT IS LOCATED IN UNINCORPORATED  
MCHENRY COUNTY

**TRAFFIC DATA:**

ILL ROUTE 120:  
2009 ADT = 10,700  
SPEED LIMIT = 55 MPH

FLEMING ROAD:  
2009 ADT = 2,350  
SPEED LIMIT = 45 MPH

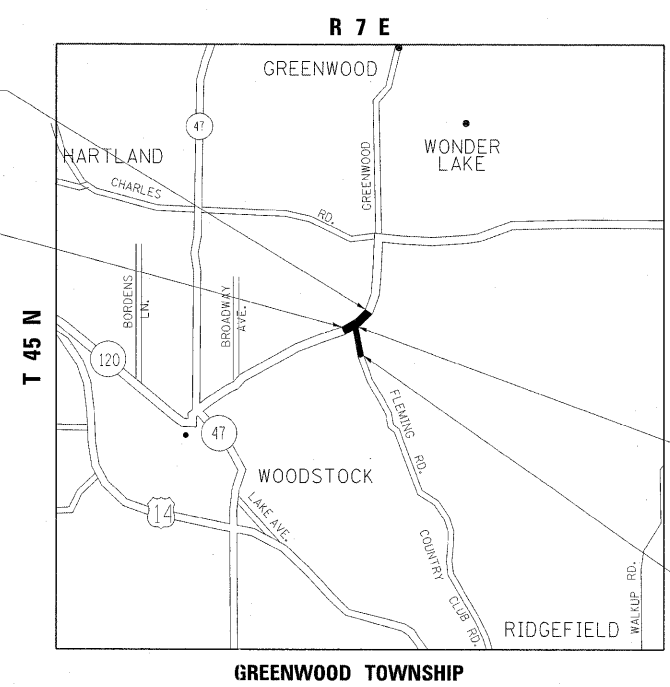


FULL SIZE PLANS HAVE BEEN PREPARED USING STANDARD ENGINEERING SCALES. REDUCED SIZED PLANS WILL NOT CONFORM TO STANDARD SCALES. IN MAKING MEASUREMENTS ON REDUCED PLANS, THE ABOVE SCALES MAY BE USED.

J.U.L.I.E.  
JOINT UTILITY LOCATION INFORMATION FOR EXCAVATION  
1-800-892-0123  
OR 811

ILL ROUTE 120  
PROJECT ENDS  
STATION 137 + 40

ILL ROUTE 120  
PROJECT BEGINS  
STATION 123 + 00



FLEMING ROAD  
PROJECT ENDS  
STATION 219 + 15

FLEMING ROAD  
PROJECT BEGINS  
STATION 211 + 29

PROJECT ENGINEER: JENPAI CHANG (847) 705 - 4432  
PROJECT MANAGER: KEN ENG  
  
CONTRACT NO. 60L27

ILL ROUTE 120: GROSS AND NET LENGTH = 1,440.00 FT. = 0.27 MILE  
FLEMING ROAD: GROSS AND NET LENGTH = 786.00 FT. = 0.15 MILE

STATE OF ILLINOIS  
DEPARTMENT OF TRANSPORTATION  
DIVISION OF HIGHWAYS  
  
SUBMITTED OCTOBER 14 20 11  
*Dennis M. O'Keefe*  
DEPUTY DIRECTOR OF HIGHWAYS, REGION ENGINEER  
December 9 20 11  
*Scott E. Stitt* P.E.  
ENGINEER OF DESIGN AND ENVIRONMENT  
December 9 20 11  
*William R. Frey*  
DIRECTOR OF HIGHWAYS, CHIEF ENGINEER

**PRINTED BY THE AUTHORITY  
OF THE STATE OF ILLINOIS**