

STATE OF ILLINOIS
DEPARTMENT OF TRANSPORTATION
DIVISION OF HIGHWAYS

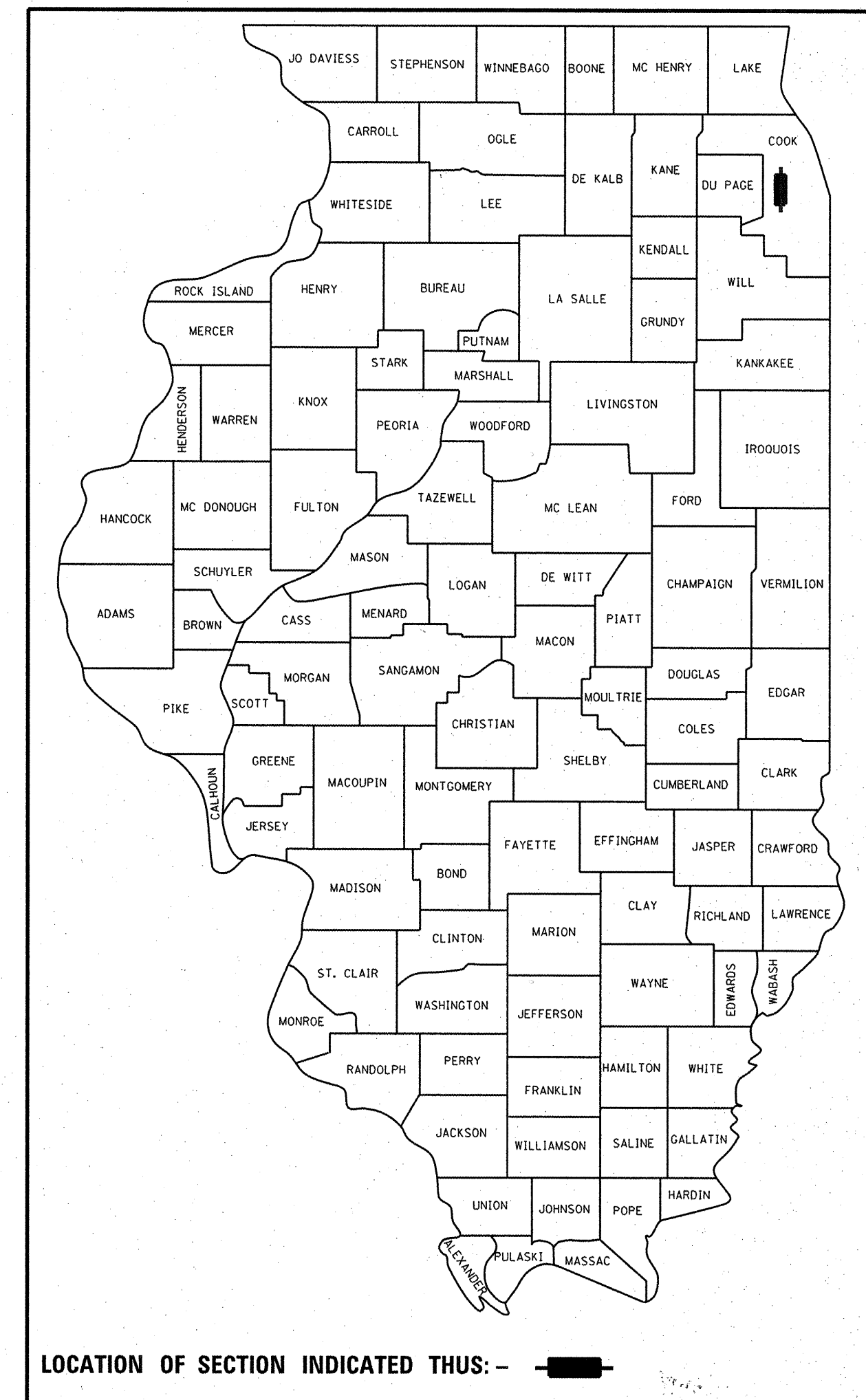
F.A.P. RTE.	SECTION	COUNTY	TOTAL SHEETS	SHEET NO.
348	2010-090-RS	COOK	55	1
FED. ROAD DIST. NO. 1	ILLINOIS	CONTRACT NO.	60L86	

FOR INDEX OF SHEETS, SEE SHEET NO. 2

PROPOSED HIGHWAY PLANS

F.A.P. 348: IL ROUTE 43 (HARLEM AVE.)
26TH STREET TO CULLOM AVENUE
SECTION: 2010-090-RS
RESURFACING (3P)

D-91-053-11

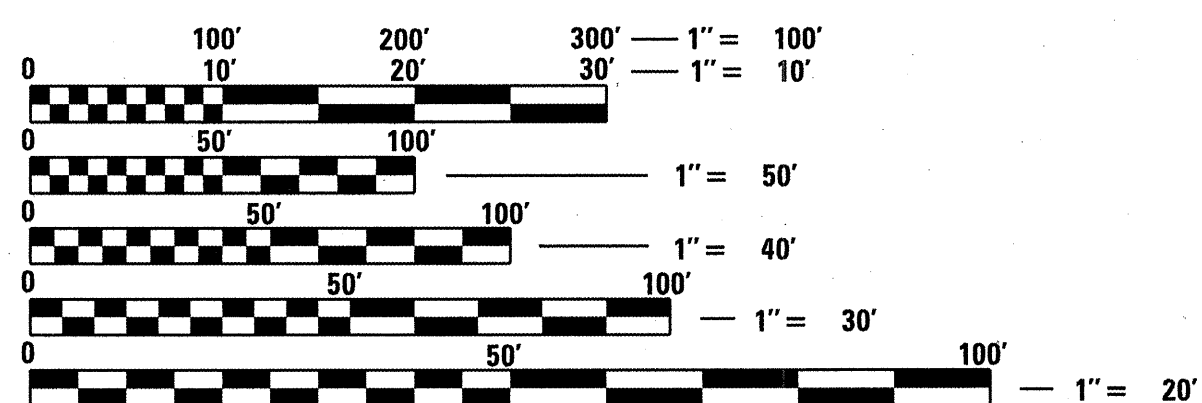


PROJECT IS LOCATED IN THE CITIES OF CHICAGO AND BERWYN AND IN THE VILLAGES OF RIVERSIDE, FOREST PARK, OAK PARK, RIVER FOREST, ELMWOOD PARK, AND NORRIDGE

COOK COUNTY
C-91-053-11

TRAFFIC DATA:

2009 ADT = 30,700 - 39,500
SPEED LIMIT = 25 - 35 MPH

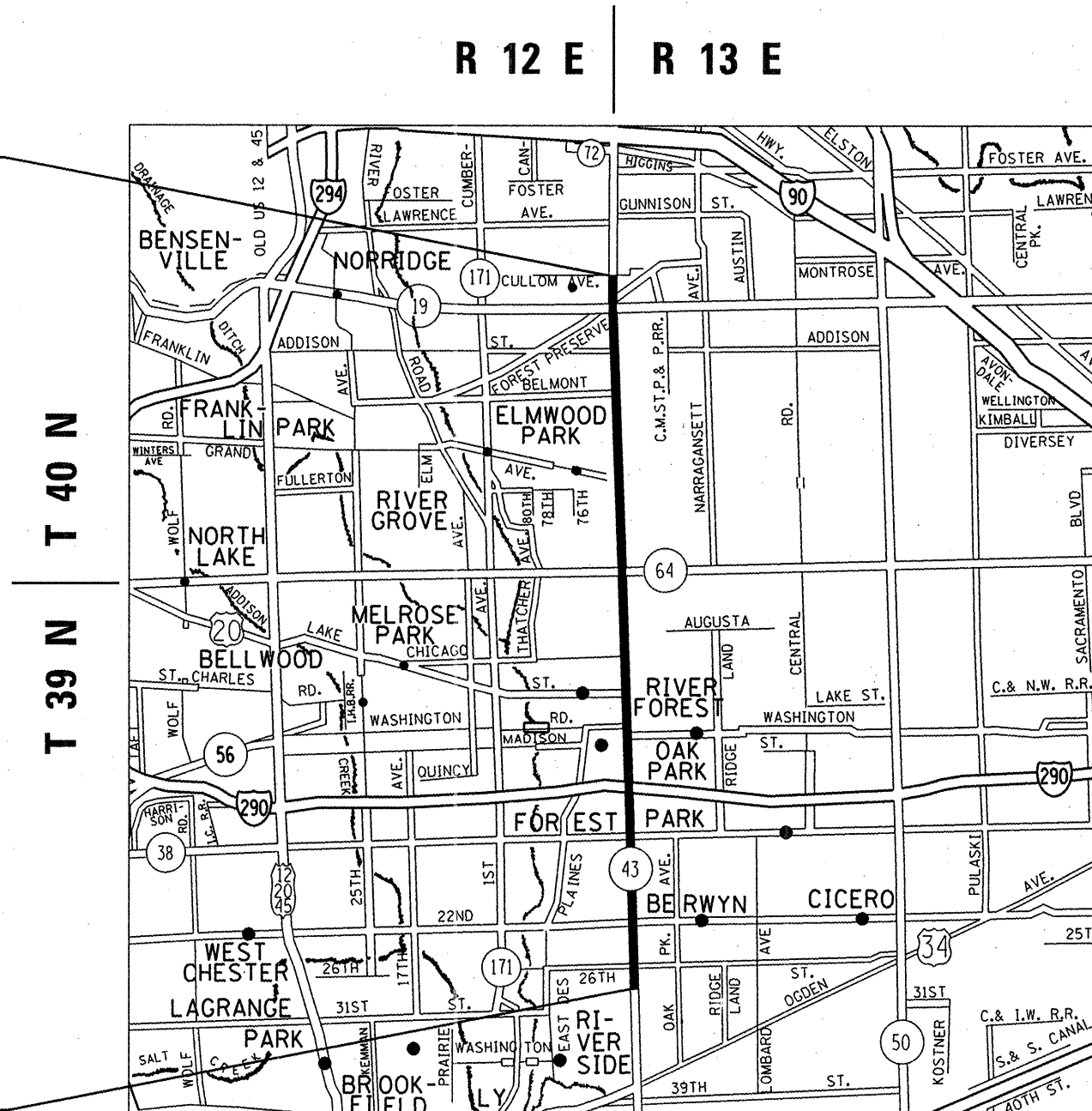


FULL SIZE PLANS HAVE BEEN PREPARED USING STANDARD ENGINEERING SCALES. REDUCED SIZED PLANS WILL NOT CONFORM TO STANDARD SCALES. IN MAKING MEASUREMENTS ON REDUCED PLANS, THE ABOVE SCALES MAY BE USED.

C.U.A.N.
CHICAGO UTILITY ALERT NETWORK
1-312-744-7000

J.U.L.I.E.
JOINT UTILITY LOCATION INFORMATION FOR EXCAVATION
1-800-892-0123
OR 811

PROJECT ENDS
STA.: 488 + 10



PROJECT BEGINS
STA.: 70 + 37

PROVISO, RIVER FOREST, OAK PARK, AND BERWYN TOWNSHIP

OMISSIONS:

STA. 182+56 TO STA. 185+97
STA. 232+11 TO STA. 234+37
STA. 238+23 TO STA. 239+09
STA. 314+28 TO STA. 419+73
STA. 475+44 TO STA. 480+41

GROSS LENGTH OF PROJECT = 41773 FEET = 7.91 MILES
NET LENGTH OF PROJECT = 30046 FEET = 5.69 MILES

PROJECT ENGINEER: JENPAI CHANG (847) 705-4432
PROJECT MANAGER: KEN ENG (847) 705-4247

CONTRACT NO. 60L86

STATE OF ILLINOIS
DEPARTMENT OF TRANSPORTATION
DIVISION OF HIGHWAYS

SUBMITTED OCTOBER 17, 20 11

Diana M. O'Keefe
DEPUTY DIRECTOR OF HIGHWAYS, REGION ENGINEER

December 9 20 11
Scott E. Stitt P.E.
acting ENGINEER OF DESIGN AND ENVIRONMENT

December 9 20 11
William R. Freyer
interim DIRECTOR OF HIGHWAYS, CHIEF ENGINEER

PRINTED BY THE AUTHORITY
OF THE STATE OF ILLINOIS