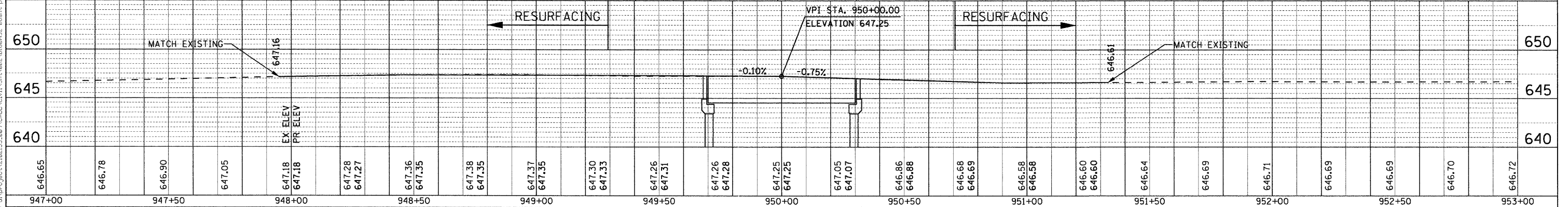
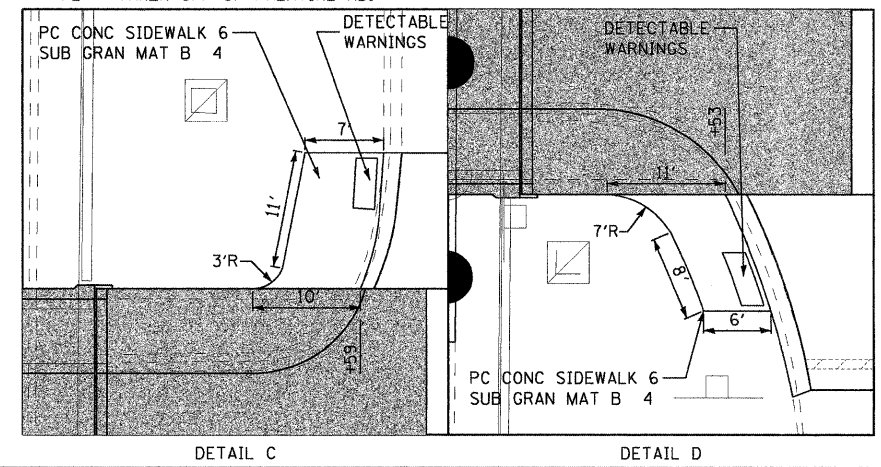
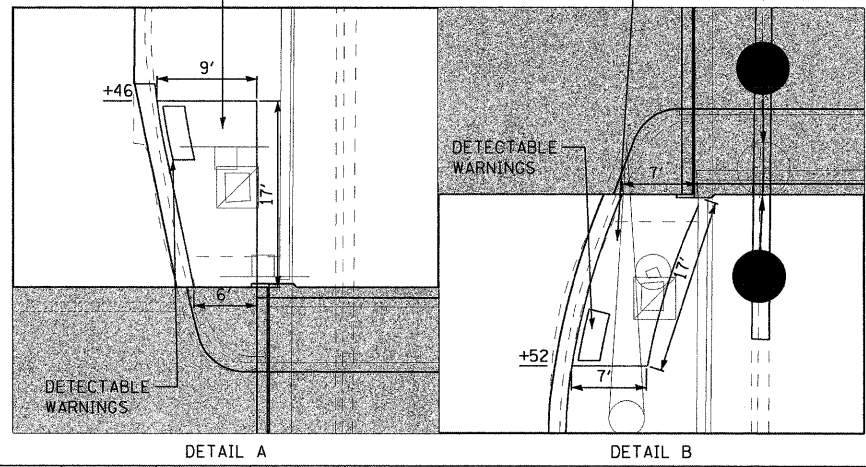
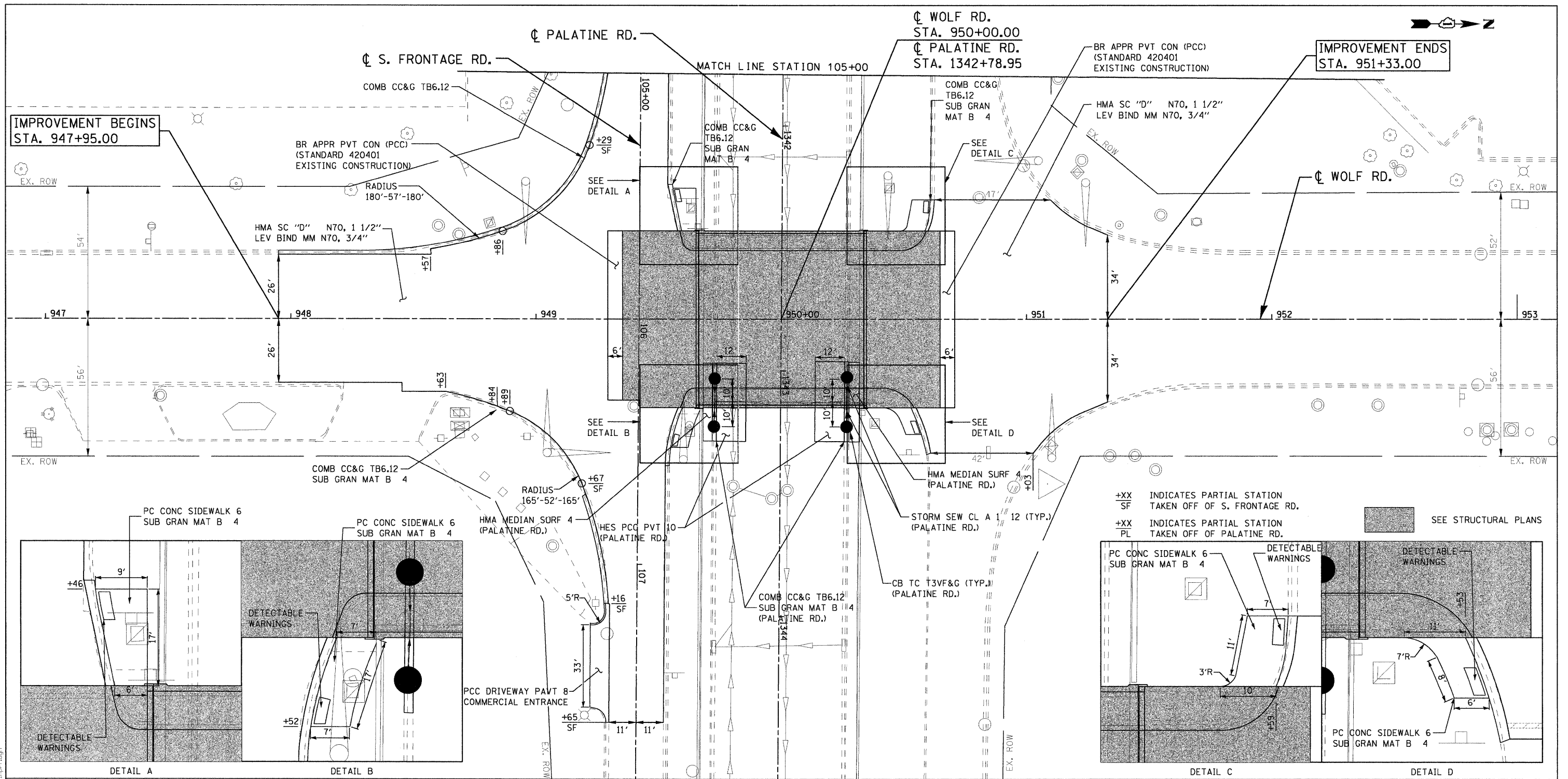


|           |  |
|-----------|--|
| DATE      |  |
| BY        |  |
| REVISIONS |  |
| NO.       |  |
| DATE      |  |
| BY        |  |
| REVISIONS |  |
| NO.       |  |
| DATE      |  |
| BY        |  |
| REVISIONS |  |
| NO.       |  |
| DATE      |  |
| BY        |  |
| REVISIONS |  |
| NO.       |  |

|           |  |
|-----------|--|
| DATE      |  |
| BY        |  |
| REVISIONS |  |
| NO.       |  |
| DATE      |  |
| BY        |  |
| REVISIONS |  |
| NO.       |  |
| DATE      |  |
| BY        |  |
| REVISIONS |  |
| NO.       |  |



|  |  |                |           |   |   |   |   |                    |                 |              |
|--|--|----------------|-----------|---|---|---|---|--------------------|-----------------|--------------|
|  | USER NAME = zpmend                                 | DESIGNED - DLP | REVISED - | <b>STATE OF ILLINOIS</b><br><b>DEPARTMENT OF TRANSPORTATION</b> | <b>WOLF ROAD OVER PALATINE ROAD</b><br><b>PROPOSED PLAN AND PROFILE</b> | F.A.P. RTE. 2692                                    | SECTION 1415B-1   | COUNTY COOK        | TOTAL SHEETS 72 | SHEET NO. 12 |
|  | PLOT SCALE = 28.00' / IN.<br>PLOT DATE = 12/6/2011 | CHECKED - TMH  | REVISED - |   |   | SCALE: 1" = 50'<br>SHEET NO. OF SHEETS STA. TO STA. | #ROUTE<br>FED. ROAD DIST. NO. ILLINOIS FED. AID PROJECT | CONTRACT NO. 60M52 |                 |              |