

**TRUCK DETOUR STAGE 1**



DETOUR TRUCKS FROM EB PALATINE ROAD TO NB WOLF ROAD UTILIZING US 45 (MILWAUKEE AVE.)

DETOUR TRUCKS FROM NB WOLF ROAD TO WB PALATINE ROAD UTILIZING US 45 (MILWAUKEE AVE.)

DETOUR TRUCKS FROM SB WOLF ROAD TO EB PALATINE ROAD UTILIZING FRONTAGE ROAD TURNAROUND

DETOUR TRUCKS FROM WB PALATINE ROAD TO SB WOLF ROAD UTILIZING FRONTAGE ROAD TURNAROUND

**LEGEND:**

-  PROPOSED TRAFFIC CONTROL SIGN
-  TYPE III BARRICADE WITH A MINIMUM OF TWO (2) FLASHING WARNING LIGHTS

**NOTES:**

LOCATIONS OF SIGNS ARE APPROXIMATE, THE ENGINEER WILL ESTABLISH THE ACCEPTABLE LOCATIONS OF BARRICADES AND SIGNS.

CONTRACTOR TO MAINTAIN ACCESS TO PUBLIC AND PRIVATE DRIVEWAYS AT ALL TIMES DURING CONSTRUCTION.

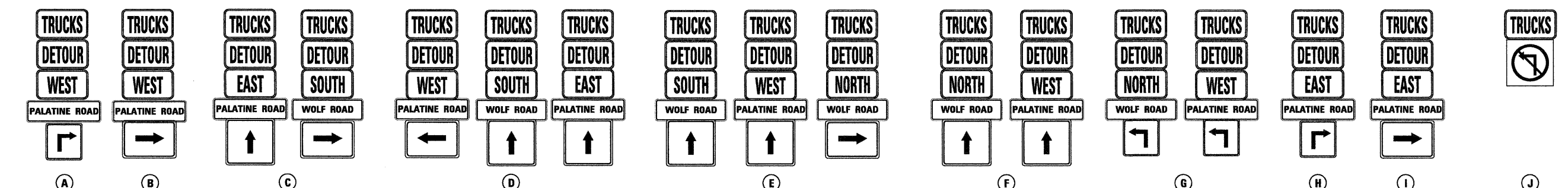
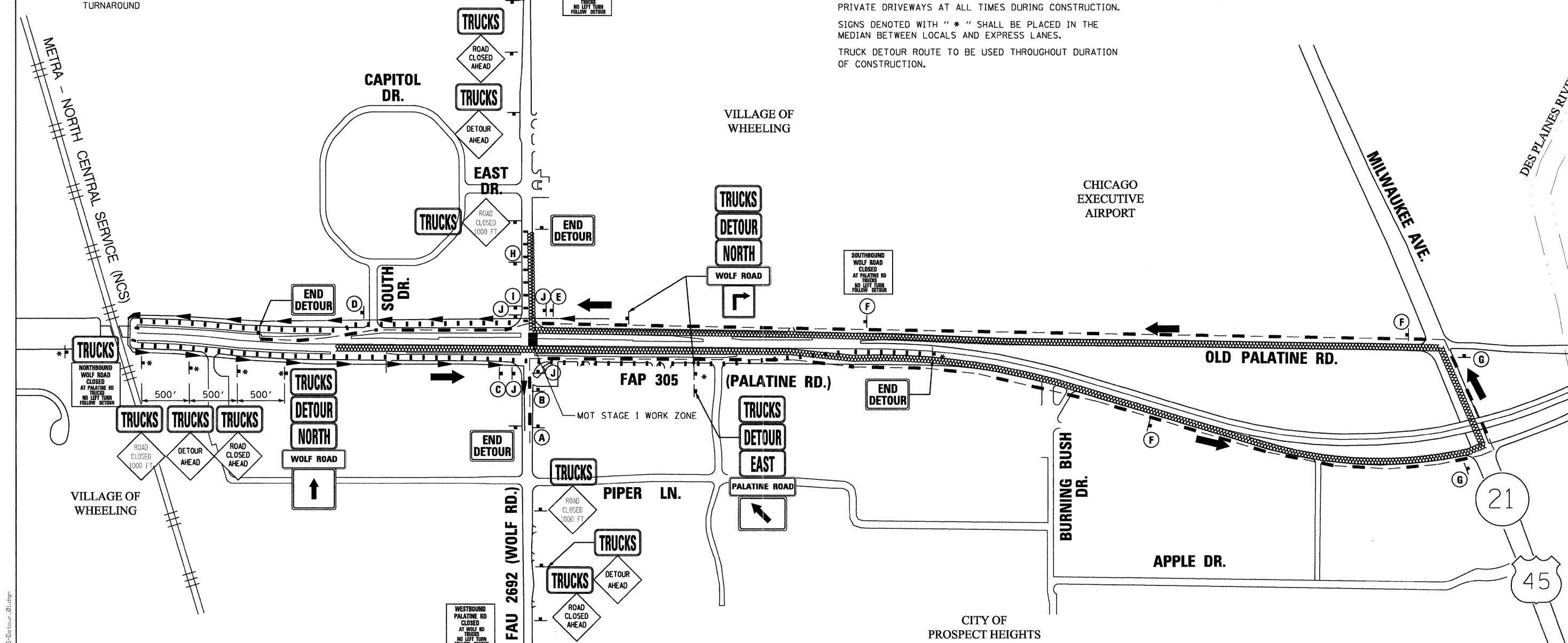
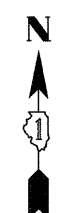
SIGNS DENOTED WITH "\*" SHALL BE PLACED IN THE MEDIAN BETWEEN LOCALS AND EXPRESS LANES.

TRUCK DETOUR ROUTE TO BE USED THROUGHOUT DURATION OF CONSTRUCTION.

**ADVANCED WARNING SIGNS:**

**TRUCKS**  
NO LEFT TURN AT WOLF RD  
FOLLOW DETOUR

PLACE 1000 FT BEFORE FIRST DETOUR SIGN



FILE NAME = G:\projects\2102185\_0295\CADD\VC\11\Sheet\002\0186M02-13-Detour-01.dgn

USER NAME = zpiend	DESIGNED - DLP	REVISED -
PLOT SCALE = 50.00' / IN.	DRAWN - ENTRAN	REVISED -
PLOT DATE = 12/6/2011	CHECKED - TMH	REVISED -
	DATE - 10/28/11	REVISED -

**STATE OF ILLINOIS  
DEPARTMENT OF TRANSPORTATION**

<b>WOLF ROAD OVER PALATINE ROAD TRUCK DETOUR MOT STAGE 1</b>			
SCALE: 50.00' / IN.	SHEET NO.	OF SHEETS	STA. TO STA.

F.A.U. RTE. 2692	SECTION 1415B-1	COUNTY COOK	TOTAL SHEETS 72	SHEET NO. 17
FED. ROAD DIST. NO. 1 ILLINOIS FED. AID PROJECT				CONTRACT NO. 60M52