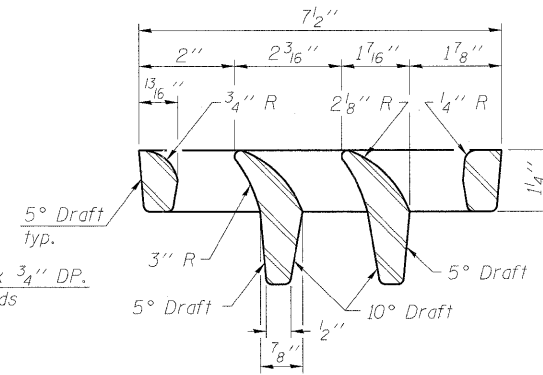
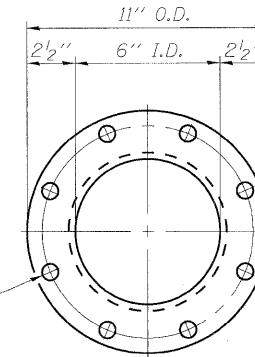


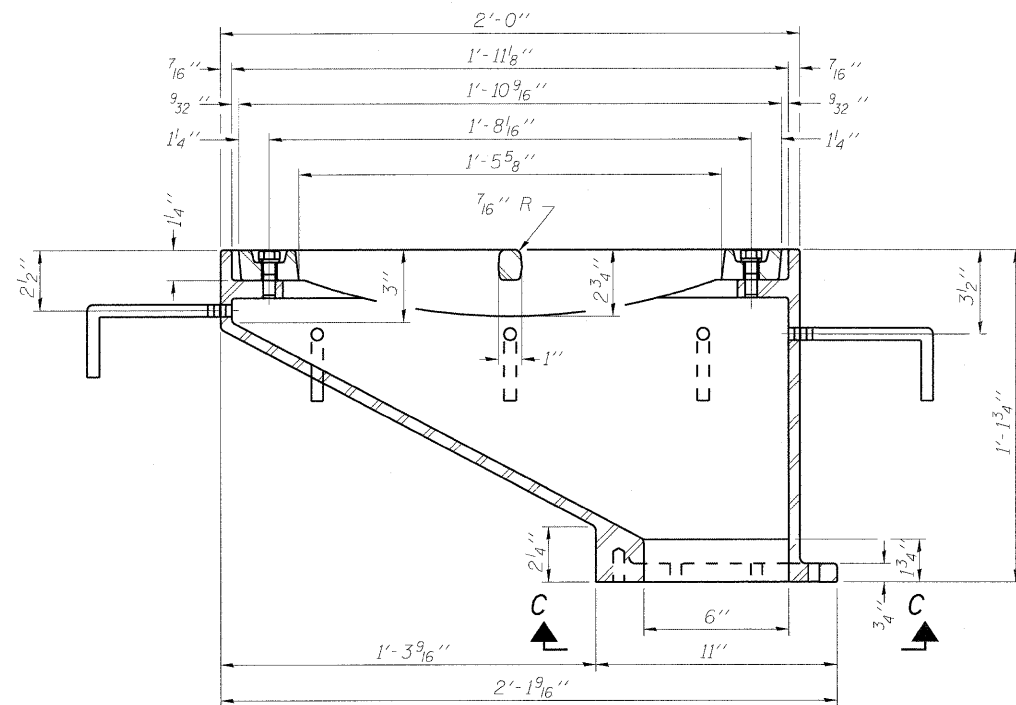
PLAN



VANE GRATE DETAIL

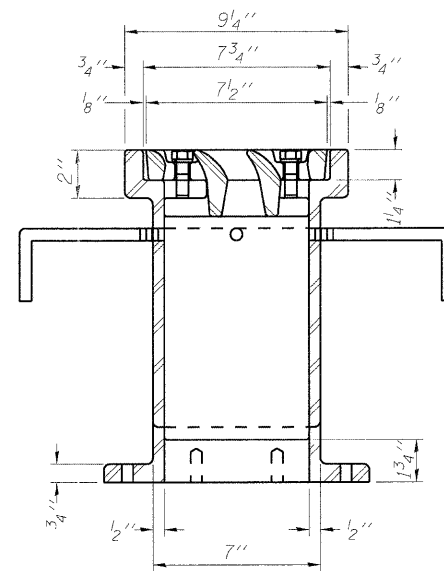


VIEW C-C

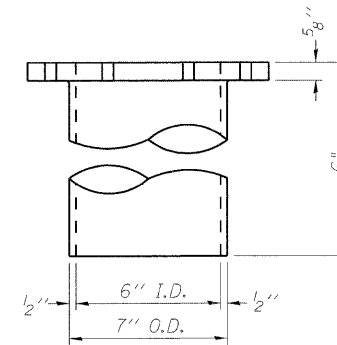


SECTION A-A

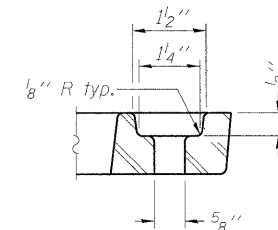
See Sheet S9 for scupper location.



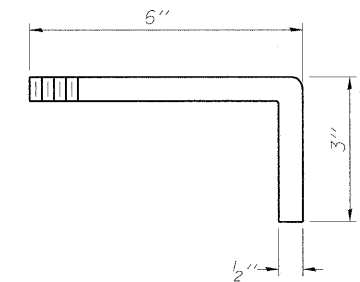
SECTION B-B



DOWNSPOUT



BOLT HOLE DETAIL



ANCHOR STUD DETAIL

Drill and tap 8 holes for  $\frac{1}{2}$ "-13 bolts on a 9 $\frac{1}{2}$ "  $\phi$  bolt circle. (2 blind holes are 1 $\frac{1}{4}$ " deep, 6 thru holes)

BILL OF MATERIAL

ITEM	UNIT	QUANTITY
Drainage Scupper, DS-12	Each	2

DS-12

7-1-10



USER NAME = zpiemid	DESIGNED - BPS	REVISED -
PLOT SCALE = N/A	CHECKED - BHS	REVISED -
PLOT DATE = 10/27/2011	DRAWN - BPS	REVISED -
	CHECKED - BHS	REVISED -

STATE OF ILLINOIS  
DEPARTMENT OF TRANSPORTATION

DRAINAGE SCUPPER, DS-12  
S.N. 016-0680

SHEET NO. S12 OF 29 SHEETS

F.A.J. RTE. 2692	SECTION 1415B-1	COUNTY COOK	TOTAL SHEETS 72	SHEET NO. 47
			CONTRACT NO. 60M52	
ILLINOIS FED. AID PROJECT				