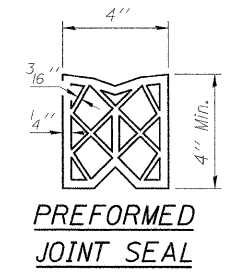
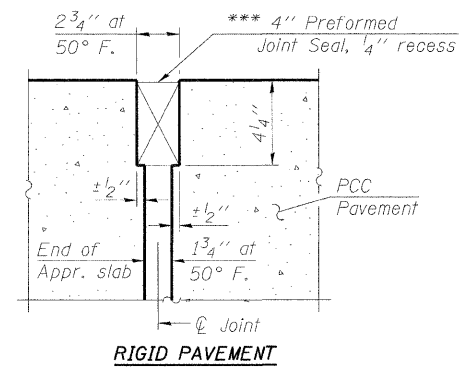
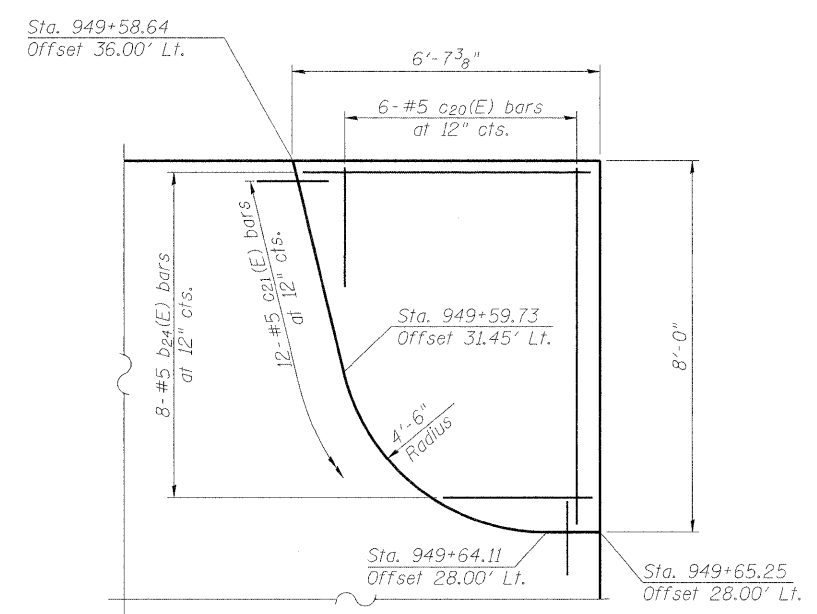


Notes:  
 See Sheet S16 of 29 for Sections D-D & E-E.  
 a<sub>20</sub>(E) thru a<sub>23</sub>(E) bar spacings measured along  $\bar{C}$  Rdwy.  
 Cut bars b<sub>24</sub>(E) and c<sub>20</sub>(E) as required to fit sidewalk.

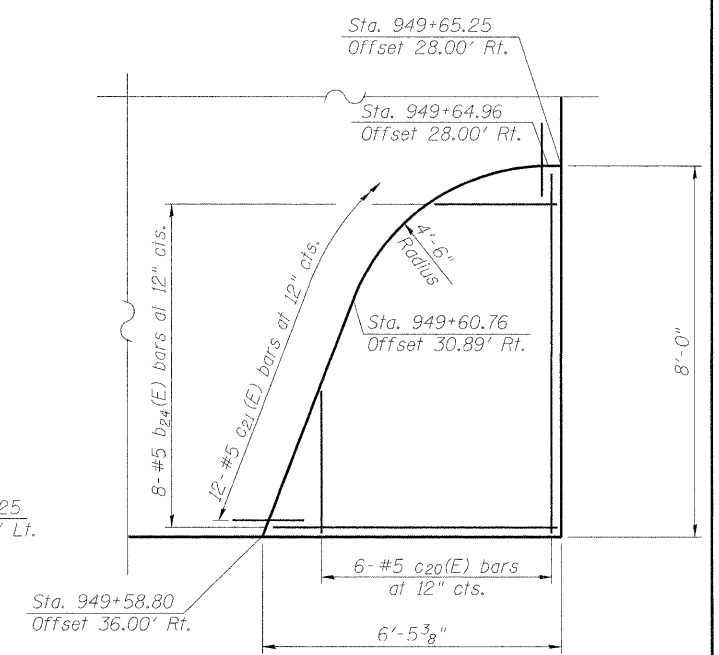
\*\*\* Cost included with Concrete Superstructure.



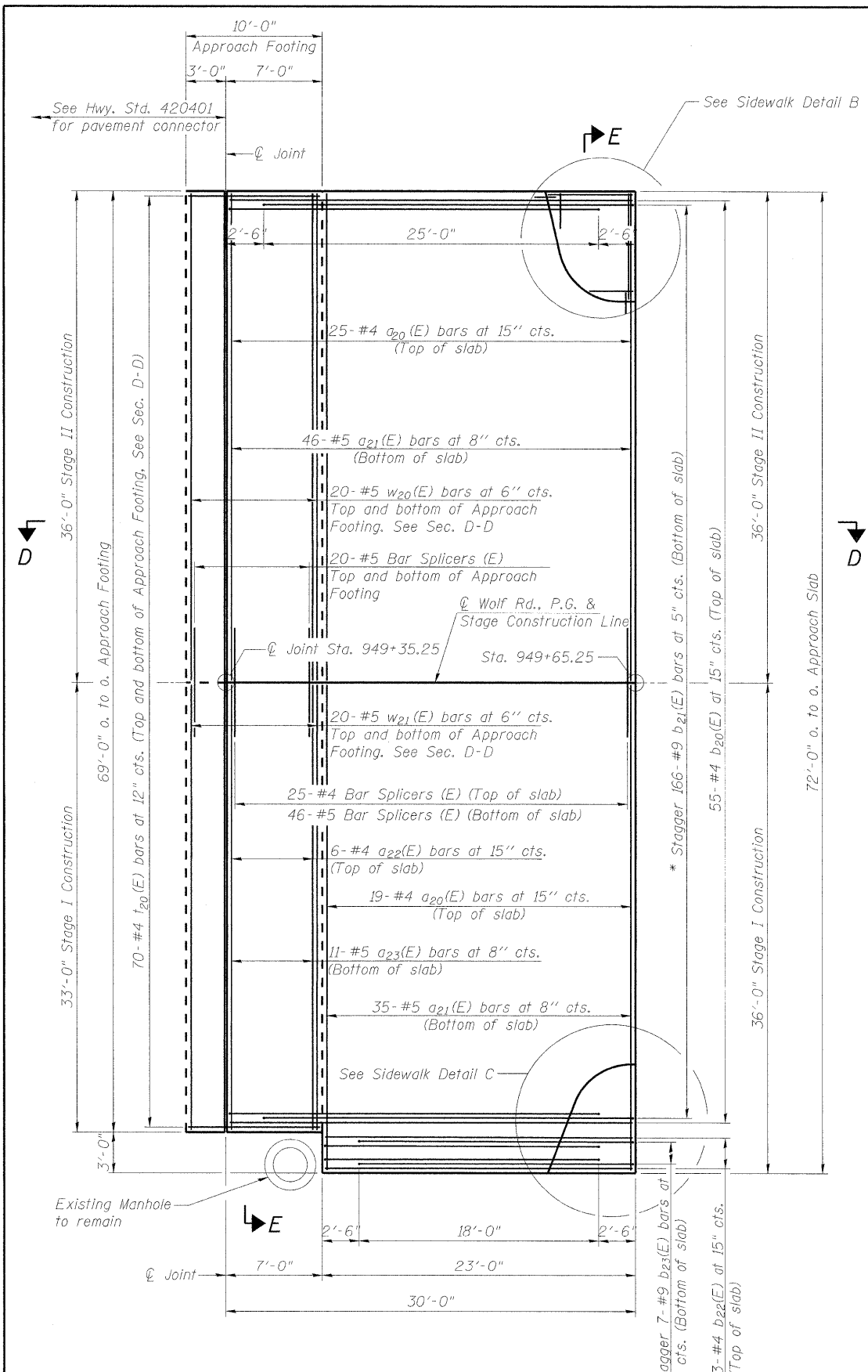
DETAIL A



SIDEWALK DETAIL B



SIDEWALK DETAIL C



PLAN

\* Tilt #9 b<sub>21</sub>(E) and b<sub>23</sub>(E) bars as required to maintain clearance.

FILE NAME = g:\projects\2102155\_003\roads\structure\sk\0160509-6\DWG2-011-S Approach.dgn

	USER NAME = 2sayerb	DESIGNED - BPS	REVISD -	<b>STATE OF ILLINOIS</b> <b>DEPARTMENT OF TRANSPORTATION</b>	<b>SOUTH APPROACH SLAB</b> <b>S.N. 016-0680</b>	F.A.U. RTE. 2692	SECTION 1415B-1	COUNTY COOK	TOTAL SHEETS 72	SHEET NO. 49
	PLOT SCALE = N/A	DRAWN - BPS	REVISD -			SHEET NO. S14 OF 29 SHEETS		CONTRACT NO. 60M52		ILLINOIS FED. AID PROJECT
	PLOT DATE = 11/30/2011	CHECKED - BHS	REVISD -							