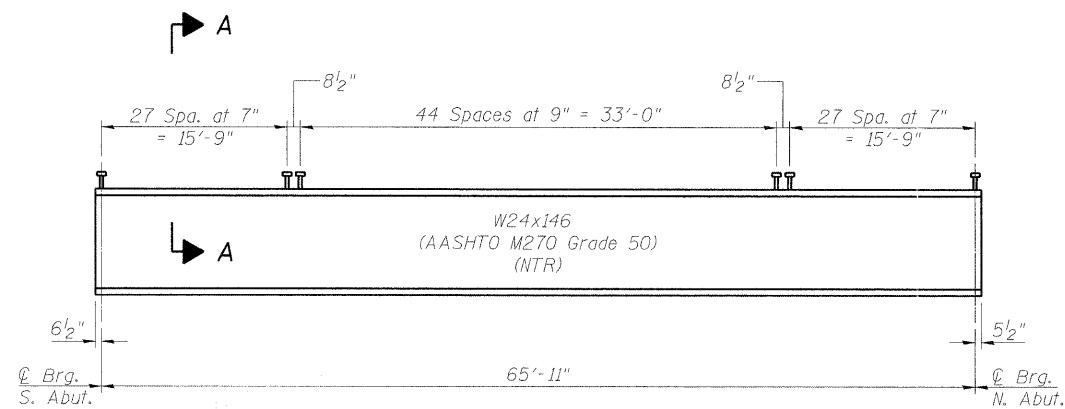
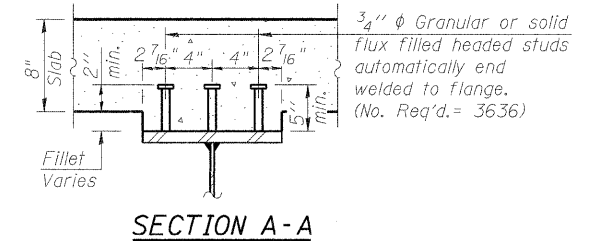


**TOP OF BEAM ELEVATION TABLE**  
(For Fabrication use only)

Beam	☉ Brg. S. Abut.	☉ Brg. N. Abut.
1	646.07	645.79
2	646.16	645.88
3	646.26	645.98
4	646.35	646.07
5	646.44	646.16
6	646.53	646.25
7	646.53	646.25
8	646.44	646.16
9	646.35	646.07
10	646.26	645.98
11	646.16	645.88
12	646.07	645.79



**BEAM ELEVATION**

Load carrying components designated "NTR" shall conform to the Impact Testing Requirements, Zone 2.

Structural Steel is furnished in a separate contract (60R35). Cost for erecting Structural Steel is included in this contract as "Erecting Structural Steel".

FILE NAME = g:\proj\proj\2102155\_003\road\struct\beam\11\0160660-60R35-017-Framing.dgn

	USER NAME = 2sayerb	DESIGNED - BPS	REVISED -	<b>STATE OF ILLINOIS</b> <b>DEPARTMENT OF TRANSPORTATION</b>	<b>FRAMING PLAN</b> <b>S.N. 016-0680</b>	F.A.U. RTE. = 2692	SECTION = 1415B-1	COUNTY = COOK	TOTAL SHEETS = 72	SHEET NO. = 52
	PLOT SCALE = N/A	DRAWN - BPS	REVISED -			CONTRACT NO. 60M52				
	PLOT DATE = 11/30/2011	CHECKED - BHS	REVISED -	SHEET NO. 517 OF 29 SHEETS			ILLINOIS FED. AID PROJECT			