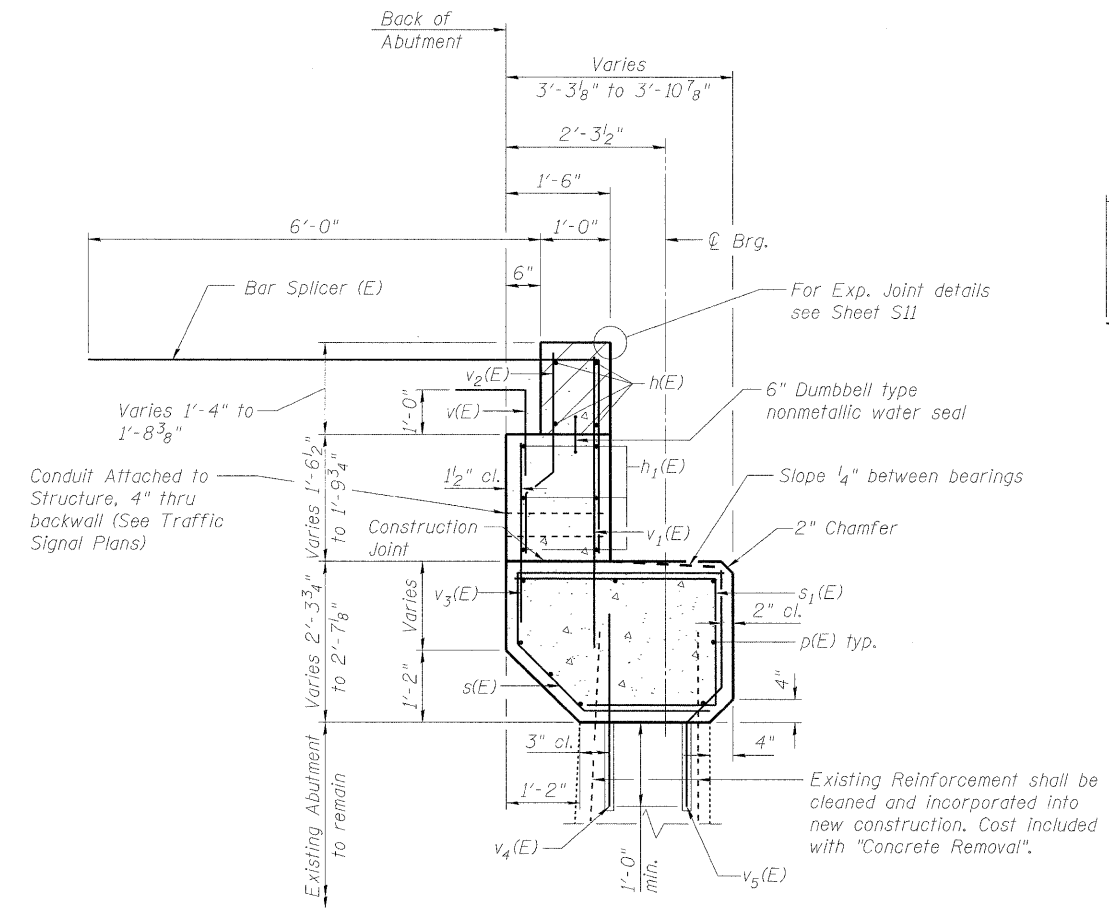


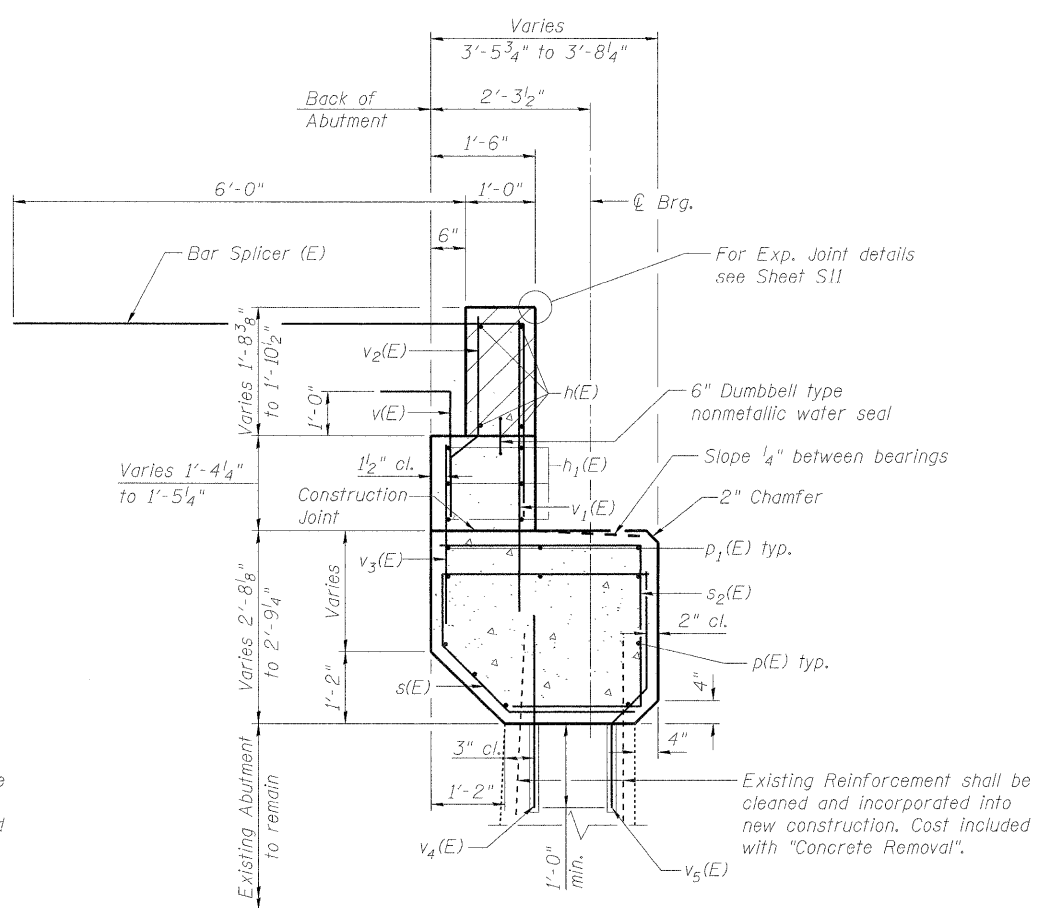
**SOUTH ABUTMENT  
BILL OF MATERIAL**

Bar	No.	Size	Length	Shape
b <sub>2</sub> (E)	6	#4	4'-7"	□
c <sub>2</sub> (E)	4	#5	8'-0"	—
d <sub>2</sub> (E)	4	#6	4'-5"	J
d <sub>3</sub> (E)	4	#4	4'-1"	J
h(E)	8	#6	36'-1"	—
h <sub>1</sub> (E)	12	#5	36'-1"	—
p(E)	16	#7	36'-1"	—
p <sub>1</sub> (E)	6	#7	14'-0"	—
s(E)	74	#4	7'-0"	U
s <sub>1</sub> (E)	50	#4	6'-3"	U
s <sub>2</sub> (E)	24	#4	6'-8"	U
s <sub>3</sub> (E)	18	#4	3'-9"	U
v(E)	74	#5	3'-11"	L
v <sub>1</sub> (E)	74	#5	4'-4"	—
v <sub>2</sub> (E)	74	#4	3'-0"	—
v <sub>3</sub> (E)	74	#5	2'-7"	—
v <sub>4</sub> (E)	74	#4	3'-0"	—
v <sub>5</sub> (E)	74	#4	3'-3"	—
Concrete Removal		Cu. Yd.	33.2	
Structure Excavation		Cu. Yd.	41	
Concrete Structures		Cu. Yd.	29.1	
Concrete Superstructure		Cu. Yd.	5.0	
Reinforcement Bars, Epoxy Coated		Pound	4,330	
Concrete Sealer		Sq. Ft.	579	

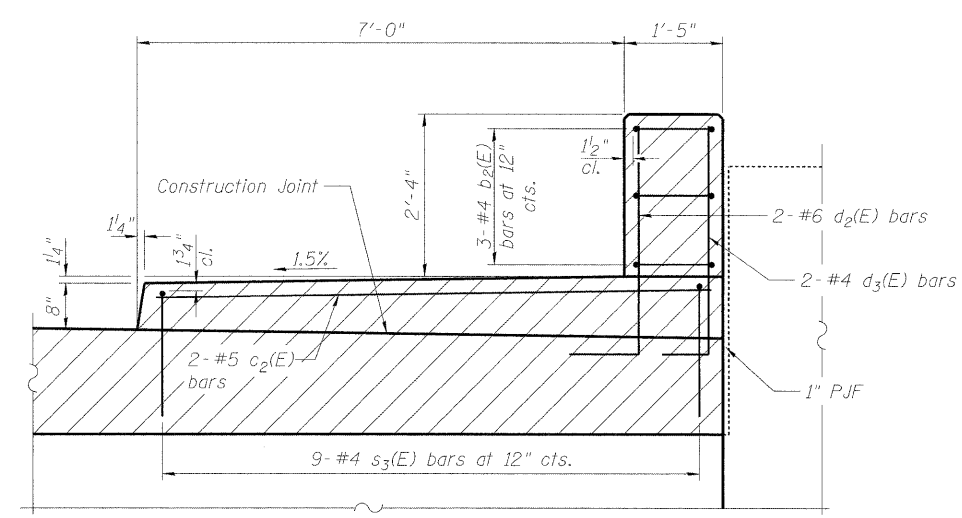
Notes:  
 Hatched area to be poured after superstructure false work has been removed. Cost included with Concrete Superstructures.  
 Space reinforcement in caps to miss anchor bolts.  
 Pour steps monolithically with cap.  
 Drill and Grout bars to be installed according to Section 584 of the Standard Specifications. Cost included with Reinforcement Bars, Epoxy Coated.  
 For details of Bar Splicers, see Sheet S25.



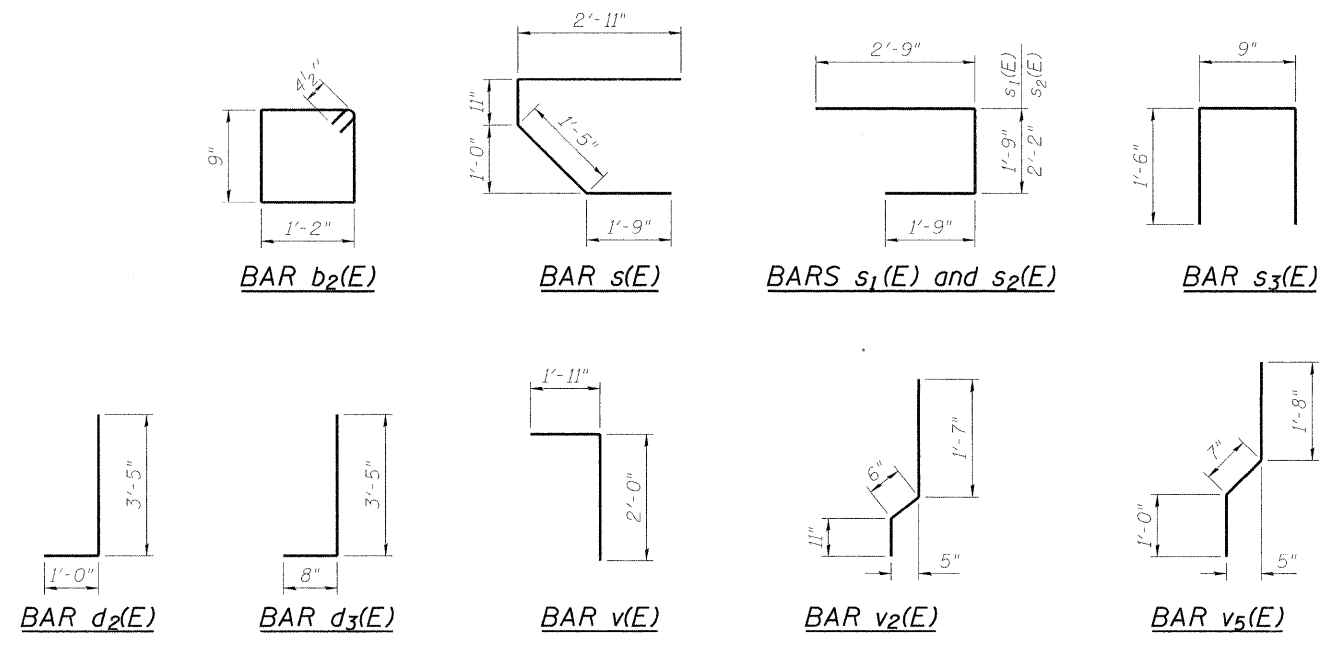
**SECTION A-A**



**SECTION B-B**



**DETAIL C**



FILE NAME = g:\p\proj\2102155\_00\road\structure\sh1\0160680-60\F02-022-S\_Abct.2.dgn

	USER NAME = 2sagarb	DESIGNED - BPS	REVISED -	<b>STATE OF ILLINOIS DEPARTMENT OF TRANSPORTATION</b>	<b>SOUTH ABUTMENT DETAILS S.N. 016-0680</b>	F.A.U. RTE. 2692	SECTION 1415B-1	COUNTY COOK	TOTAL SHEETS 72	SHEET NO. 57		
	PLOT SCALE = N/A	CHECKED - BHS	REVISED -			SHEET NO. S22 OF 29 SHEETS		CONTRACT NO. 60M52				
	PLOT DATE = 11/30/2011	DRAWN - BPS	REVISED -									
		CHECKED - BHS	REVISED -			ILLINOIS FED. AID PROJECT						