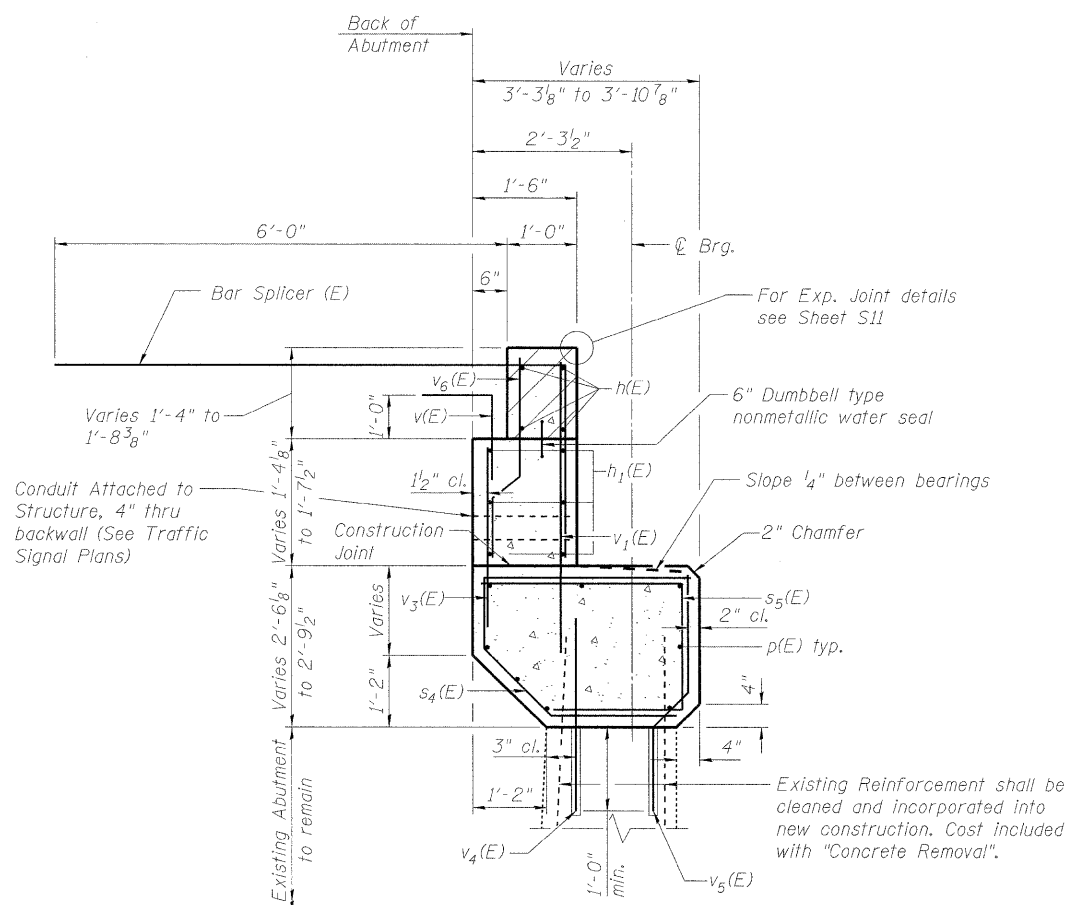


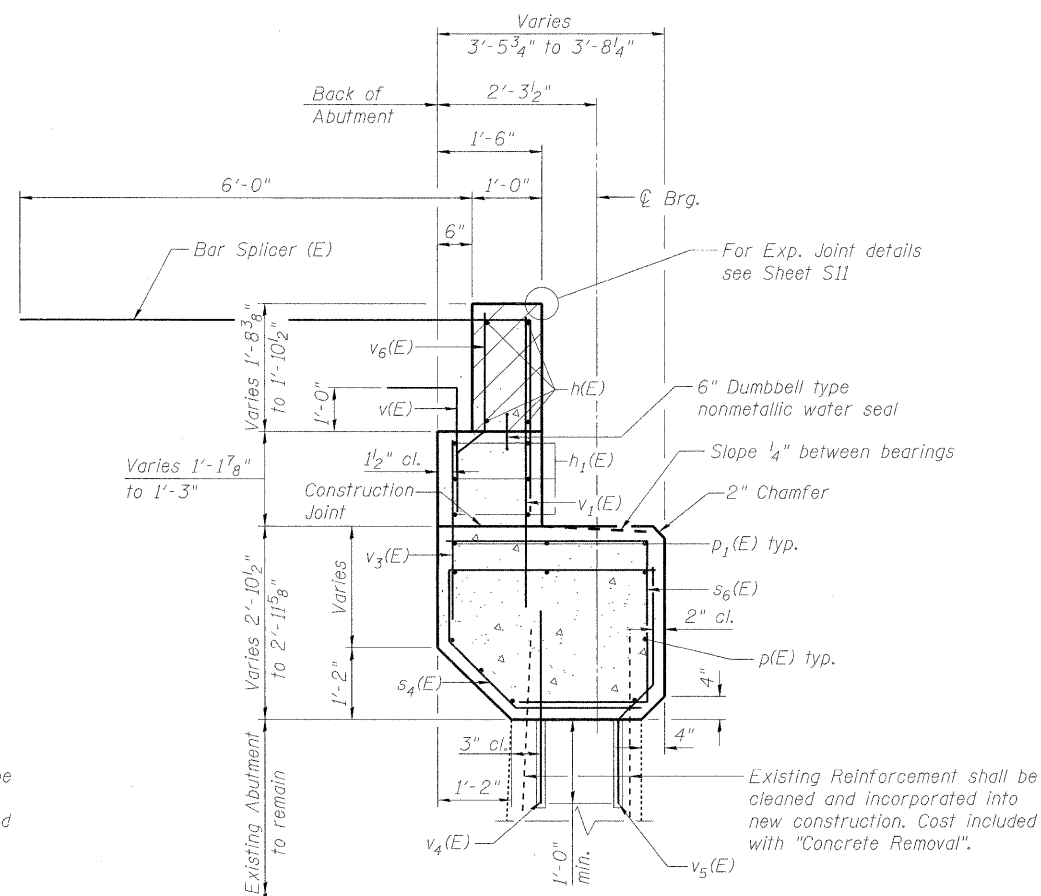
**NORTH ABUTMENT
BILL OF MATERIAL**

Bar	No.	Size	Length	Shape
b ₂ (E)	6	#4	4'-7"	□
c ₂ (E)	4	#5	8'-0"	—
d ₂ (E)	4	#6	4'-5"	J
d ₃ (E)	4	#4	4'-1"	J
h(E)	8	#6	36'-1"	—
h ₁ (E)	12	#5	36'-1"	—
p(E)	16	#7	36'-1"	—
p ₁ (E)	6	#7	14'-0"	—
s ₃ (E)	18	#4	3'-9"	□
s ₄ (E)	74	#4	7'-3"	—
s ₅ (E)	50	#4	6'-6"	—
s ₆ (E)	24	#4	6'-10"	—
v(E)	74	#5	3'-11"	—
v ₁ (E)	74	#5	4'-4"	—
v ₃ (E)	74	#5	2'-7"	—
v ₄ (E)	74	#4	3'-0"	—
v ₅ (E)	74	#4	3'-3"	—
v ₆ (E)	74	#4	2'-10"	—
Concrete Removal		Cu. Yd.	33.2	
Structure Excavation		Cu. Yd.	41	
Concrete Structures		Cu. Yd.	30.2	
Concrete Superstructure		Cu. Yd.	5.0	
Reinforcement Bars, Epoxy Coated		Pound	4,340	
Concrete Sealer		Sq. Ft.	580	

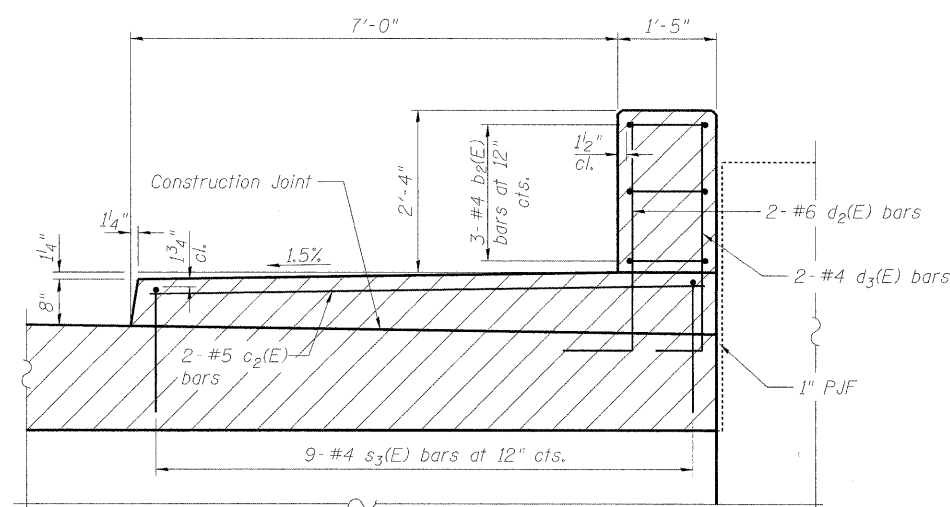
Notes:
 Hatched area to be poured after superstructure false work has been removed. Cost included with Concrete Superstructures.
 Space reinforcement in caps to miss anchor bolts.
 Four steps monolithically with cap.
 Drill and Grout bars to be installed according to Section 584 of the Standard Specifications. Cost included with Reinforcement Bars, Epoxy Coated.
 For details of Bar Splicers, see Sheet S25.



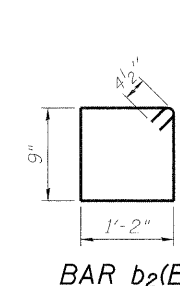
SECTION A-A



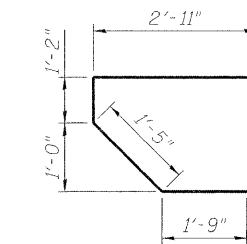
SECTION B-B



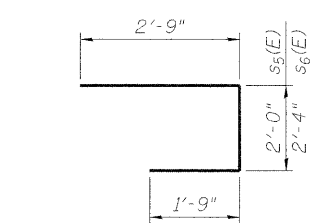
DETAIL C



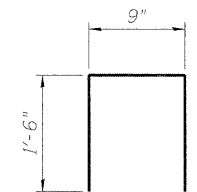
BAR b₂(E)



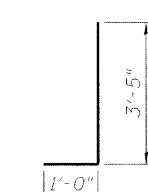
BAR s₄(E)



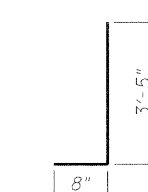
BARS s₅(E) and s₆(E)



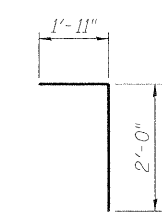
BAR s₃(E)



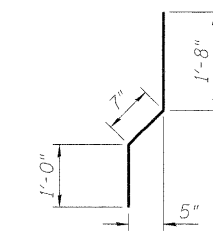
BAR d₂(E)



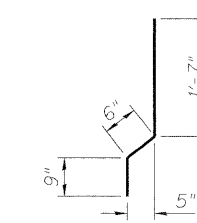
BAR d₃(E)



BAR v(E)



BAR v₅(E)



BAR v₆(E)

FILE NAME = g:\projects\11022155_003\cadd\structure\abnt\0160560-6\0162-024-N_Abnt_2.dgn



USER NAME = 2sayerb	DESIGNED - BPS	REVISED -
PLOT SCALE = N/A	CHECKED - BHS	REVISED -
PLOT DATE = 11/30/2011	DRAWN - BPS	REVISED -
	CHECKED - BHS	REVISED -

**STATE OF ILLINOIS
DEPARTMENT OF TRANSPORTATION**

**NORTH ABUTMENT DETAILS
S.N. 016-0680**

SHEET NO. S24 OF 29 SHEETS

F.A.U. RTE. 2692	SECTION 1415B-1	COUNTY COOK	TOTAL SHEETS 72	SHEET NO. 59
CONTRACT NO. 60M52			ILLINOIS FED. AID PROJECT	